

OPEN

Neurology[®]

The most widely read and highly cited peer-reviewed neurology journal
The Official Journal of the American Academy of Neurology



Neurology Publish Ahead of Print

DOI: 10.1212/WNL.000000000207115

Potential Utility of Plasma P-Tau and Neurofilament Light Chain as Surrogate Biomarkers for Preventive Clinical Trials

Pamela Ferreira, PhD¹; João Pedro Ferrari-Souza^{1,2}; Cécile Tissot^{1,3,4}; Bruna Bellaver, PhD^{1,2}; Douglas Leffa, PhD^{1,5}; Firoza Lussier, MSc^{1,3}; Guilherme Povala, PhD¹; Joseph Therriault, BSc^{3,4}; Andréa L Benedet, PhD^{6,7}; Nicholas J Ashton, PhD^{6,7,8,9}; Ann D. Cohen, PhD¹; Oscar L. Lopez, MD¹; Dana Tudorascu, PhD¹; William E. Klunk, PhD¹; Jean-Paul Soucy, MD, MSc³; Serge Gauthier, MD⁴; Victor Villemagne, PhD¹; Henrik Zetterberg, MD, PhD^{6-8,10-12}; Kaj Blennow, MD, PhD^{6,7}; Pedro Rosa-Neto, MD, PhD^{3,4}; Eduardo R. Zimmer, PhD²; Thomas K Karikari, PhD^{1,6}; Tharick Pascoal, PhD^{1,13} for the Alzheimer's Disease Neuroimaging Initiative

Corresponding Author:

Tharick Pascoal, tharick.pascoal@gmail.com

This is an open access article distributed under the terms of the Creative Commons Attribution-NonCommercial-NoDerivatives License 4.0 (CC BY-NC-ND), which permits downloading and sharing the work provided it is properly cited. The work cannot be changed in any way or used commercially without permission from the journal.

1. Department of Psychiatry, School of Medicine, University of Pittsburgh, Pittsburgh, PA, USA
2. Graduate Program in Biological Sciences: Biochemistry, Universidade Federal do Rio Grande do Sul, Porto Alegre, RS, Brazil
3. Translational Neuroimaging Laboratory, McGill University Research Centre for Studies in Aging, Alzheimer's Disease Research Unit, Douglas Research Institute, Le Centre intégré universitaire de santé et de services sociaux (CIUSSS) de l'Ouest-de-l'Île-de-Montréal
4. Department of Neurology and Neurosurgery, Psychiatry and Pharmacology and Therapeutics, McGill University, Montreal, QC, Canada
5. ADHD Outpatient Program & Development Psychiatry Program, Hospital de Clínicas de Porto Alegre, Porto Alegre, RS, Brazil
6. Department of Psychiatry and Neurochemistry, The Sahlgrenska Academy at the University of Gothenburg, Mölndal, Sweden
7. Clinical Neurochemistry Laboratory, Sahlgrenska University Hospital, Gothenburg, Sweden
8. Wallenberg Centre for Molecular and Translational Medicine, University of Gothenburg, Gothenburg, Sweden
9. Department of Old Age Psychiatry, Institute of Psychiatry, Psychology & Neuroscience, King's College London, London, UK
10. Department of Neurodegenerative Disease, UCL Queen Square Institute of Neurology, London, UK
11. UK Dementia Research Institute at UCL, London, UK
12. Hong Kong Center for Neurodegenerative Diseases, Hong Kong, China
13. Department of Neurology, School of Medicine, University of Pittsburgh, Pittsburgh, PA, USA.

Equal Author Contribution:

Pâmela C. L Ferreira and João Pedro Ferrari-Souza contributed equally to this work.

Contributions:

Pamela Ferreira: Drafting/revision of the manuscript for content, including medical writing for content; Major role in the acquisition of data; Study concept or design; Analysis or interpretation of data

João Pedro Ferrari-Souza: Drafting/revision of the manuscript for content, including medical writing for content; Major role in the acquisition of data; Study concept or design; Analysis or interpretation of data

Cécile Tissot: Drafting/revision of the manuscript for content, including medical writing for content; Study concept or design

Bruna Bellaver: Drafting/revision of the manuscript for content, including medical writing for content; Major role in the acquisition of data; Analysis or interpretation of data

Douglas Leffa: Drafting/revision of the manuscript for content, including medical writing for content; Analysis or interpretation of data

Firoza Lussier: Drafting/revision of the manuscript for content, including medical writing for content; Major role in the acquisition of data; Analysis or interpretation of data

Guilherme Povala: Drafting/revision of the manuscript for content, including medical writing for content; Analysis or interpretation of data

Joseph Therriault: Drafting/revision of the manuscript for content, including medical writing for content; Study concept or design

Andréa L Benedet: Study concept or design

Nicholas J Ashton: Drafting/revision of the manuscript for content, including medical writing for content

Ann D. Cohen: Drafting/revision of the manuscript for content, including medical writing for content; Analysis or interpretation of data

Oscar L. Lopez: Analysis or interpretation of data

Dana Tudorascu: Analysis or interpretation of data

William E. Klunk: Analysis or interpretation of data

Jean-Paul Soucy: Drafting/revision of the manuscript for content, including medical writing for content

Serge Gauthier: Drafting/revision of the manuscript for content, including medical writing for content

Victor Villemagne: Drafting/revision of the manuscript for content, including medical writing for content; Analysis or interpretation of data

Henrik Zetterberg: Drafting/revision of the manuscript for content, including medical writing for content; Analysis or interpretation of data

Kaj Blennow: Drafting/revision of the manuscript for content, including medical writing for content

Pedro Rosa-Neto: Drafting/revision of the manuscript for content, including medical writing for content; Analysis or interpretation of data

Eduardo R. Zimmer: Drafting/revision of the manuscript for content, including medical writing for content; Analysis or interpretation of data

Thomas K Karikari: Drafting/revision of the manuscript for content, including medical writing for content; Analysis or interpretation of data

Tharick Pascoal: Drafting/revision of the manuscript for content, including medical writing for content; Major role in the acquisition of data; Study concept or design; Analysis or interpretation of data

Figure Count: 3

Table Count: 0

Search Terms:

[26] Alzheimer's disease, [36] Cognitive aging, Biomarkers, blood, surrogate

Acknowledgment:

Data collection and sharing for this project was funded by the Alzheimer's Disease Neuroimaging Initiative (ADNI; National Institutes of Health Grant U01 AG024904) and DOD ADNI (Department of Defense award number W81XWH-12-2-0012). ADNI is funded by the National Institute on Aging, the National Institute of Biomedical Imaging and Bioengineering and through generous contributions from the following: AbbVie, Alzheimer's Association; Alzheimer's Drug Discovery Foundation; Araclon Biotech; BioClinica; Biogen; Bristol-Myers Squibb Company; CereSpir; Eisai Inc.; Elan Pharmaceuticals; Eli Lilly and Company; EuroImmun; F. Hoffmann-La Roche and its affiliated company Genentech; Fujirebio; GE Healthcare; IXICO; Janssen Alzheimer Immunotherapy Research & Development; Johnson & Johnson Pharmaceutical Research & Development; Lumosity; Lundbeck; Merck; Meso Scale Diagnostics; NeuroRx Research; Neurotrack Technologies; Novartis Pharmaceuticals

Corporation; Pfizer; Piramal Imaging; Servier; Takeda Pharmaceutical Company; and Transition Therapeutics. The Canadian Institutes of Health Research is providing funds to support ADNI clinical sites in Canada. Private sector contributions are facilitated by the Foundation for the National Institutes of Health (www.fnih.org). The grantee organization is the Northern California Institute for Research and Education, and the study is coordinated by the Alzheimer's Disease Cooperative Study at the University of California, San Diego. ADNI data are disseminated by the Laboratory for Neuro Imaging at the University of Southern California.

Study Funding:

P.C.L. Ferreira is supported by Alzheimer's Association (AARFD-22-923814). J.P. Ferrari-Souza receives financial support from CNPq (200691/2021-0). H. Zetterberg is a Wallenberg Scholar supported by grants from the Swedish Research Council (2018-02532), the European Research Council (681712 and 101053962), Swedish State Support for Clinical Research (ALFGBG-71320), the Alzheimer Drug Discovery Foundation (ADDF), USA (201809-2016862), the AD Strategic Fund and the Alzheimer's Association (ADSF-21-831376-C, ADSF-21-831381-C and ADSF-21-831377-C), the Olav Thon Foundation, the Erling-Persson Family Foundation, Stiftelsen för Gamla Tjänarinnor, Hjärnfonden, Sweden (FO2019-0228), the European Union's Horizon 2020 research and innovation programme under the Marie Skłodowska-Curie grant agreement No 860197 (MIRIADE), the European Union Joint Programme – Neurodegenerative Disease Research (JPND2021-00694), and the UK Dementia Research Institute at UCL (UKDRI-1003). K. Blennow is supported by the Swedish Research Council (2017-00915), the Alzheimer Drug Discovery Foundation (RDAPB-201809-2016615), the Swedish Alzheimer Foundation (AF-742881), Hjärnfonden (FO2017-0243), the Swedish state under the agreement between the Swedish government and the County Councils, the ALF-agreement (ALFGBG-715986), the European Union Joint Program for Neurodegenerative Disorders (JPND2019-466-236), the NIH (1R01AG068398-01), and the Alzheimer's Association 2021 Zenith Award (ZEN-21-848495). E.R. Zimmer receives financial support from CNPq (435642/2018-9 and 312410/2018-2), Instituto Serrapilheira (Serra-1912-31365), Brazilian National Institute of Science and Technology in Excitotoxicity and Neuroprotection (465671/2014-4), FAPERGS/MS/CNPq/SESRS-PPSUS (30786.434.24734.231120170), and ARD/FAPERGS (54392.632.30451.05032021) and Alzheimer's Association [AARGD-21-

850670]. T.A. Pascoal is supported by the National Institute of Health (R01AG075336 and R01AG073267) and the Alzheimer's Association (AACSF-20-648075).

Disclosures:

P.C.L. Ferreira reports no disclosures relevant to the manuscript; J.P. Ferrari-Souza reports no disclosures relevant to the manuscript; C. Tissot reports no disclosures relevant to the manuscript; B. Bellaver reports no disclosures relevant to the manuscript; D.T. Leffa reports no disclosures relevant to the manuscript; F.Z. Lussier reports no disclosures relevant to the manuscript; G. Povala reports no disclosures relevant to the manuscript; J. Therriault reports no disclosures relevant to the manuscript; A.L. Benedet reports no disclosures relevant to the manuscript; N.J. Ashton reports no disclosures relevant to the manuscript; A.D. Cohen reports no disclosures relevant to the manuscript; O.L. Lopez reports no disclosures relevant to the manuscript; D.L. Tudorascu reports no disclosures relevant to the manuscript.; W.E. Klunk reports no disclosures relevant to the manuscript; J.P. Soucy reports no disclosures relevant to the manuscript; S. Gauthier has served as a scientific advisor to Cerveau Therapeutics; V.L. Villemagne reports no disclosures relevant to the manuscript; H. Zetterberg has served at scientific advisory boards and/or as a consultant for Abbvie, Alector, ALZPath, Annexon, Apellis, Artery Therapeutics, AZTherapies, CogRx, Denali, Eisai, Nervgen, Novo Nordisk, Pinteon Therapeutics, Red Abbey Labs, reMYND, Passage Bio, Roche, Samumed, Siemens Healthineers, Triplet Therapeutics, and Wave, has given lectures in symposia sponsored by Celectricon, Fujirebio, Alzecure, Biogen, and Roche, and is a co-founder of Brain Biomarker Solutions in Gothenburg AB (BBS), which is a part of the GU Ventures Incubator Program (outside submitted work). K. Blennow has served as a consultant, at advisory boards, or at data monitoring committees for Abcam, Axon, Biogen, JOMDD/Shimadzu. Julius Clinical, Lilly, MagQu, Novartis, Prothena, Roche Diagnostics, and Siemens Healthineers, and is a co-founder of Brain Biomarker Solutions in Gothenburg AB (BBS), which is a part of the GU Ventures Incubator Program, all unrelated to the work presented in this paper. P. Rosa-Neto reports no disclosures relevant to the manuscript; E.R. Zimmer serves in the scientific advisory board of Next Innovative Therapeutics; T.K. Karikari reports no disclosures relevant to the manuscript; T.A. Pascoal reports no disclosures relevant to the manuscript.

Preprint DOI:

medRxivDOI: 10.1101/2022.08.17.22278853

Received Date:

2022-08-24

Accepted Date:

2023-01-11

Handling Editor Statement:

Submitted and externally peer reviewed. The handling editor was Associate Editor Linda Hershey, MD, PhD, FAAN.

Abstract

Objective: To test the utility of longitudinal changes in plasma phosphorylated tau 181 (p-tau181) and neurofilament light chain (NfL) as surrogate markers for clinical trials targeting cognitively unimpaired (CU) populations.

Methods: We estimated the sample size needed to test a 25% drug effect with 80% of power at a 0.05 level on reducing changes in plasma markers in CU participants from ADNI database.

Results: We included 257 CU individuals [45.5% males; mean age = 73 (6) years; 32% amyloid-beta (A β) positive]. Changes in plasma NfL were associated with age, while changes in plasma p-tau181 with progression to amnesic mild cognitive impairment. Clinical trials using p-tau181 and NfL would require 85% and 63% smaller sample sizes, respectively, for a 24-month than a 12-month follow-up. A population enrichment strategy using intermediate levels of A β positron emission tomography (Centiloid 20-40) further reduced the sample size of 24-month clinical trial using p-tau181 (73%) and NfL (59%) as a surrogate.

Discussion: Plasma p-tau181/NfL can potentially be used to monitor large-scale population interventions in CU individuals. The enrollment of CU with intermediate A β levels constitutes the alternative with the largest effect size and most cost-effective for trials testing drug effect on changes in plasma p-tau181 and NfL.

Introduction

Cognitively unimpaired (CU) individuals with underlying amyloid-beta (A β) plaques, tau tangles, and neurodegeneration have been a target population in recent clinical trials, based on the assumption that better therapeutic outcomes can be achieved before cognitive deterioration^{1, 2}. Although these individuals present an elevated risk for cognitive decline, the vast majority will remain clinically stable during typical clinical trial periods (12- to 24-month)³. This limits the use of changes in cognitive measures as a single primary outcome of therapeutical trials in this population.

Blood-based biomarkers have been proposed as a simple and cost-effective alternative to facilitate clinical trials⁴⁻⁷. Recent studies investigated the role of plasma markers in selecting individuals for clinical trials that are most likely to progress over time⁸. Tau pathology and neurodegeneration are key features of Alzheimer's disease (AD) and closely related to cognitive decline, suggesting that biomarkers representing these pathologies have the potential to surrogate AD-related progression⁹. Changes in plasma phosphorylated tau (p-tau) represent early brain accumulation of tau⁹⁻¹¹, whereas changes in plasma neurofilament light chain (NfL) have been associated with neurodegeneration in aging⁹. Thus, changes in plasma p-tau and NfL could be an alternative to monitoring drug effects in preventive trials. Here, we tested whether longitudinal changes in plasma p-tau and NfL levels can be used to monitor therapeutic response in clinical trials focusing on CU elderlies.

Materials and methods

We used participants from the Alzheimer's Disease Neuroimaging Initiative (ADNI) database (**eMethods 1**). [¹⁸F]florbetapir positron emission tomography (PET) standardized uptake ratio (SUVR) measured A β load. Plasma p-tau181 and NfL were measured using the Simoa platform. Effect size was calculated as the ratio between the mean and standard deviation (SD), and sample size was estimated using a well-validated formula^{12, 13}. Further details about biomarker analyses can be found on **eMethods 2–5** and **eFigure 1 in the Supplement**.

Results

We included 257 CU individuals [mean age, 72.8 (6.2) years; 45.5% males; 32.3% A β positive(+)]. Demographics are summarized in **eTable 1** and **eFigure 2 in the Supplement**.

Changes in plasma biomarkers as a function of their baseline levels

We observed a negative correlation between baseline plasma p-tau181 levels and its slope of change over 24 months ($r = -0.32$, $P < 0.001$, **eFigure 3 and eTable 2 in the Supplement**). By contrast, we found a positive association between baseline plasma NfL and its slope of change ($r = 0.59$, $P < 0.001$, **eFigure 3**).

Association of longitudinal changes in plasma biomarkers with age and clinical progression

Longitudinal changes in plasma NfL, but not p-tau181, significantly correlated with participants' age at baseline ($r = 0.49$, $P < 0.001$, **eFigure 4 in the Supplement**). Longitudinal changes in plasma p-tau181, but not NfL, significantly associated with an increased risk of clinical progression to mild cognitive impairment (MCI) (31/257 progressed over 24 months) [HR=1.57 (CI: 1.03–2.4), **eFigure 5**]. Results were not influenced by sex.

Effect size of longitudinal changes in plasma biomarkers

Longitudinal changes in plasma p-tau181 and NfL were not significantly different from zero at 12 months, while significant progression and larger effects size were observed at 24 months (**Figure 1, A–B, and eFigure 6 in the Supplement**).

Sample size required for clinical trials

Clinical trials performed over 24 months would require 85% ($n = 8,884$) and 63% ($n = 3,448$) smaller sample sizes than 12-month trials using plasma p-tau181 and NfL, respectively (**eTable 3 in the Supplement**). Using A β ⁺ for population enrichment reduced the sample size by 43% for p-tau181 ($n = 5,040$) and 16% for NfL ($n = 2,868$). Using intermediate levels of A β (Centiloid 20–40) for enrichment, the sample size was reduced by 73% for p-tau181 ($n = 2,432$) and 59% for NfL ($n = 1,396$) over 24 months (**Figure 2A**). **Figure 3** shows a progressive reduction in sample size estimates as a function of progressively higher drug effects.

Cost-effectiveness analysis of plasma biomarkers for clinical trials

Figure 2B demonstrates that the estimated cost of a clinical trial considering only the biomarker costs is lower using plasma than neuroimaging as surrogates. However, due to the larger number of individuals required using plasma markers, the total estimated trial cost when considering surrogate markers plus other related costs is higher using plasma (~2-fold at 24 months) than neuroimaging biomarkers (**Figure 2C**). Interestingly, for a trial including only individuals with intermediate A β levels, the total estimated cost was similar using plasma and neuroimaging for surrogacy. The estimated costs of trial using other strategies of population enrichment (CSF A β 42 for A β +, *APOE* ϵ 4 allele) are described in **eFigure 7 in the Supplement**.

Discussion

We showed that longitudinal plasma p-tau181 changes were associated with progression to MCI, while NfL changes were more closely related to aging. Plasma p-tau181 and NfL changes at 24 months, rather than 12 months, showed the potential to be used as surrogate markers in large-scale preventive clinical trials focusing on CU individuals. Cost-effectiveness analysis suggested that studies on CU A β + will have higher total costs using plasma p-tau181 and NfL for surrogacy compared to using PET/MRI biomarkers. We also demonstrated that studies enriched with CU participants with intermediate A β levels would be more cost-effective than with CU A β +

Longitudinal changes in plasma p-tau181 and NfL can potentially be used in 24-month preventive clinical trials. Recent anti-A β trials targeting symptomatic individuals have used changes in plasma biomarkers to monitor disease modification⁵⁻⁷. Our results suggest that plasma biomarkers can potentially be used in clinical trials focusing on asymptomatic individuals. Interestingly, we demonstrated that population enrichment strategies based on A β burden will have a larger impact on reducing required sample size for trials using p-tau181 than NfL as surrogates. Clinical trials testing 25% drug effects on marker reduction would require more than 5,000 and 2,800 individuals using p-tau181 and NfL, respectively, suggesting that these markers will be more suitable for monitoring large-scale population interventions than for formal randomized controlled trials. Noteworthy, our analysis supported that this scenario could be different if we consider medications with larger effect sizes on reducing biomarker changes.

Surprisingly, our results suggest that using longitudinal changes in plasma p-tau181 and NfL would not reduce the cost of clinical trials using A β + individuals compared to using changes in PET or MRI as surrogate outcomes. Although both tau-PET and plasma p-tau181 are postulated to reflect tau deposition in the brain^{14, 15}, longitudinal tau-PET changes reported in previous studies show more robust estimates, with less intra-subject variability and, consequently, translating into considerably smaller required sample sizes¹³. It is known that both plasma NfL and MRI reflect non-specific neuronal damage¹⁵. However, because structural MRI is a relatively inexpensive exam and has relatively robust longitudinal estimates, it is more cost-effective. While it is indisputable that blood-based markers are more accessible and less expensive than neuroimaging for a single patient, our results demonstrate that plasma markers can be less cost-effective for preventive trials due to their higher longitudinal variability.

Enrolling CU individuals with intermediate A β levels led to smaller sample size and costs for clinical trials using either plasma p-tau181 or NfL as surrogates compared to studies using the concept of A β +. In our study, individuals with higher A β levels (Centiloid>40) showed high variability and low average change in longitudinal plasma estimates, some individuals had elevated longitudinal changes, others plateaued. Thus, their exclusion reduced the standard deviation of biomarker changes and, in turn, increased the effect size, leading to smaller sample size and cost estimations.

ADNI database includes a self-selected population comprised of highly educated mostly white participants, which while generalizable to current clinical trial populations does not represent the more diverse general world population. Modifications in p-tau/NfL markers alone may fail to predict the overall benefit of a treatment. They need to be supported by clinical endpoints and/or a rigorous post-marketing monitoring of clinical benefit.

To conclude, our results suggest that 24-month changes in plasma p-tau181/NfL show large inter-subject variability but can potentially be used to monitor large-scale population interventions in CU elderlies.

<http://links.lww.com/WNL/C669>

<http://links.lww.com/WNL/C670>

References

1. Cummings J, Lee G, Zhong K, Fonseca J, Taghva K. Alzheimer's disease drug development pipeline: 2021. *Alzheimers Dement (N Y)* 2021;7:e12179.
2. Jack CR, Jr., Bennett DA, Blennow K, et al. NIA-AA Research Framework: Toward a biological definition of Alzheimer's disease. *Alzheimers Dement* 2018;14:535-562.
3. Dubois B, Hampel H, Feldman HH, et al. Preclinical Alzheimer's disease: Definition, natural history, and diagnostic criteria. *Alzheimers Dement* 2016;12:292-323.
4. Karikari TK, Ashton NJ, Brinkmalm G, et al. Blood phospho-tau in Alzheimer disease: analysis, interpretation, and clinical utility. *Nat Rev Neurol* 2022;18:400-418.
5. Budd Haeberlein S, Aisen PS, Barkhof F, et al. Two Randomized Phase 3 Studies of Aducanumab in Early Alzheimer's Disease. *J Prev Alzheimers Dis* 2022;9:197-210.
6. Pontecorvo MJ, Lu M, Burnham SC, et al. Association of Donanemab Treatment With Exploratory Plasma Biomarkers in Early Symptomatic Alzheimer Disease: A Secondary Analysis of the TRAILBLAZER-ALZ Randomized Clinical Trial. *JAMA Neurol* 2022.
7. Swanson CJ, Zhang Y, Dhadda S, et al. A randomized, double-blind, phase 2b proof-of-concept clinical trial in early Alzheimer's disease with lecanemab, an anti-A β protofibril antibody. *Alzheimer's Research & Therapy* 2021;13:80.
8. Cullen NC, Leuzy A, Janelidze S, et al. Plasma biomarkers of Alzheimer's disease improve prediction of cognitive decline in cognitively unimpaired elderly populations. *Nature Communications* 2021;12:3555.
9. Leuzy A, Mattsson-Carlgrén N, Palmqvist S, Janelidze S, Dage JL, Hansson O. Blood-based biomarkers for Alzheimer's disease. *EMBO Mol Med* 2022;14:e14408.
10. Karikari TK, Pascoal TA, Ashton NJ, et al. Blood phosphorylated tau 181 as a biomarker for Alzheimer's disease: a diagnostic performance and prediction modelling study using data from four prospective cohorts. *Lancet Neurol* 2020;19:422-433.
11. Moscoso A, Grothe MJ, Ashton NJ, et al. Longitudinal Associations of Blood Phosphorylated Tau181 and Neurofilament Light Chain With Neurodegeneration in Alzheimer Disease. *JAMA Neurol* 2021;78:396-406.
12. Grill JD, Di L, Lu PH, et al. Estimating sample sizes for pre-dementia Alzheimer's trials based on the Alzheimer's Disease Neuroimaging Initiative. *Neurobiol Aging* 2013;34:62-72.

13. Jack CR, Jr., Wiste HJ, Schwarz CG, et al. Longitudinal tau PET in ageing and Alzheimer's disease. *Brain* 2018;141:1517-1528.
14. Molinuevo JL, Ayton S, Batrla R, et al. Current state of Alzheimer's fluid biomarkers. *Acta Neuropathol* 2018;136:821-853.
15. Hansson O. Biomarkers for neurodegenerative diseases. *Nature Medicine* 2021;27:954-963.

ACCEPTED

Figure 1. Percentage of change and effect size of plasma biomarkers over 12 and 24 months. The bar plots show the percentage of changes with their respective 95% confidence intervals for plasma (A) p-tau181 (left side) and (B) NfL (right side) concentrations in CU older individuals over 12 and 24 months in relation to the biomarker value at the baseline visit. The 12- and 24-month follow-ups showed a similar annualized rate of progression. The effect size at 24 months was larger due to both a greater mean of progression and a relatively more stable change among participants (smaller standard deviation). The effect size was calculated as the ratio between the mean and standard deviation of the percentage of change overtime points. The higher the effect size, the smaller the measure's variability, which indicates a more precise populational estimate. (*) indicates that the 95% confidence interval did not cross the zero line, therefore, the longitudinal change was significantly different from zero.

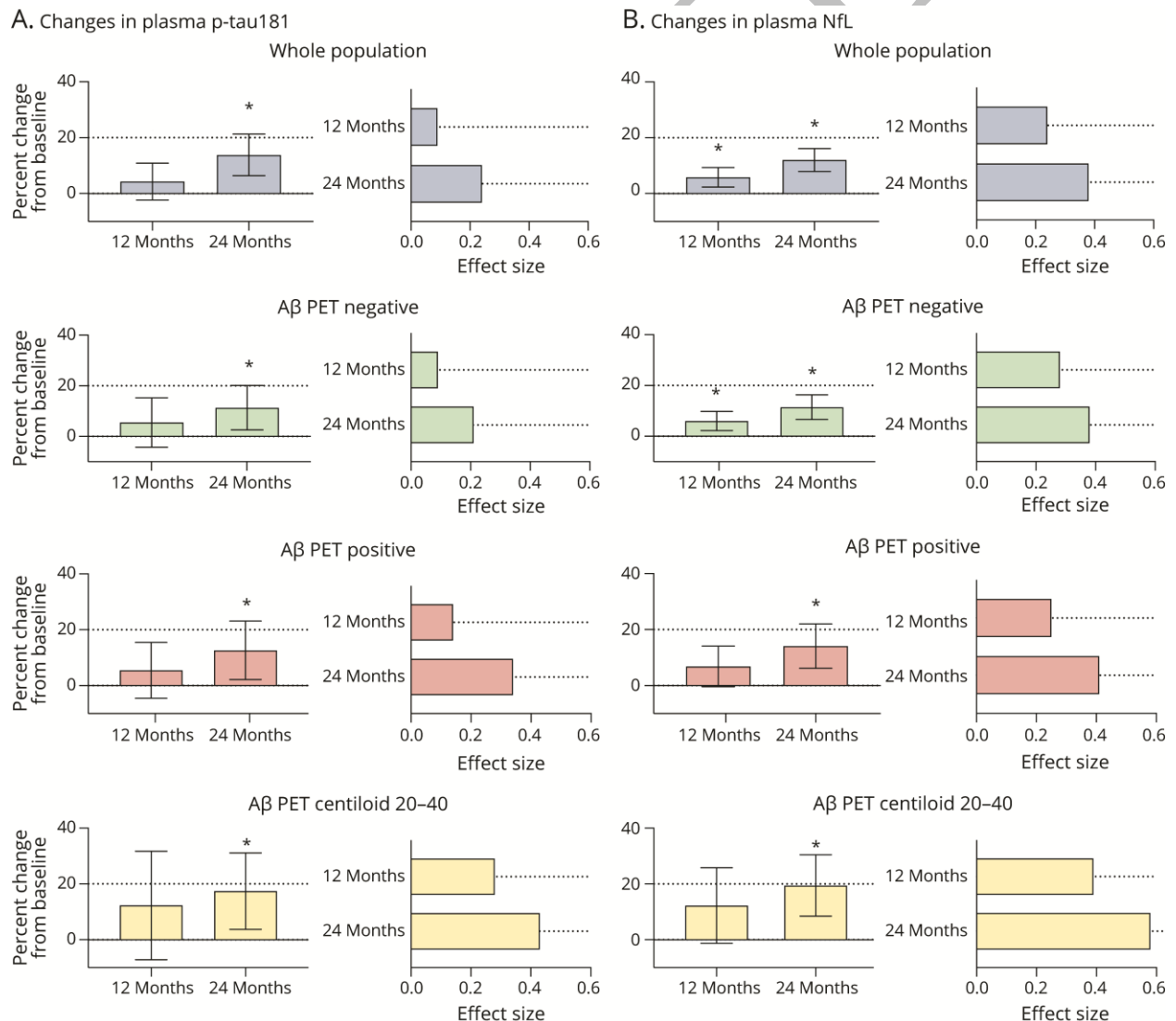
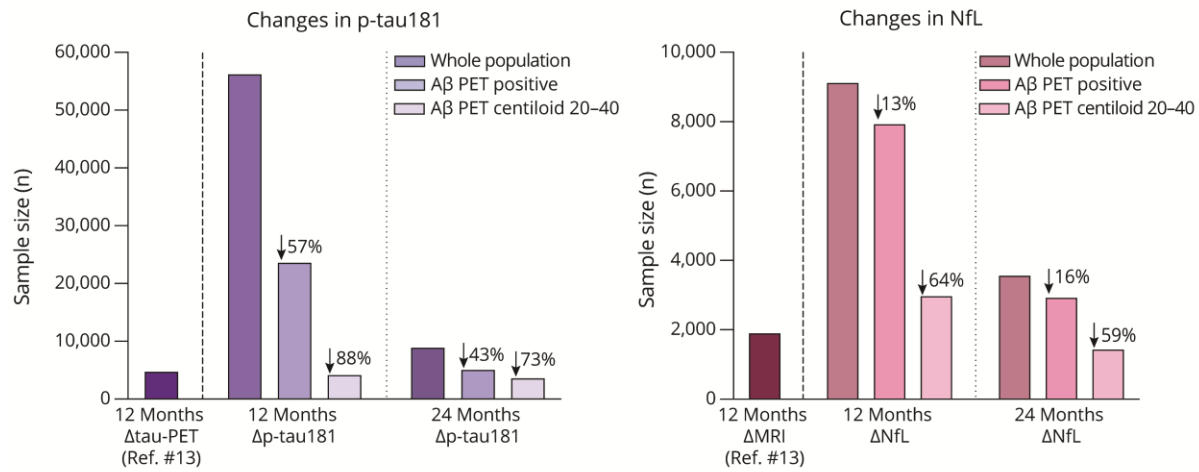
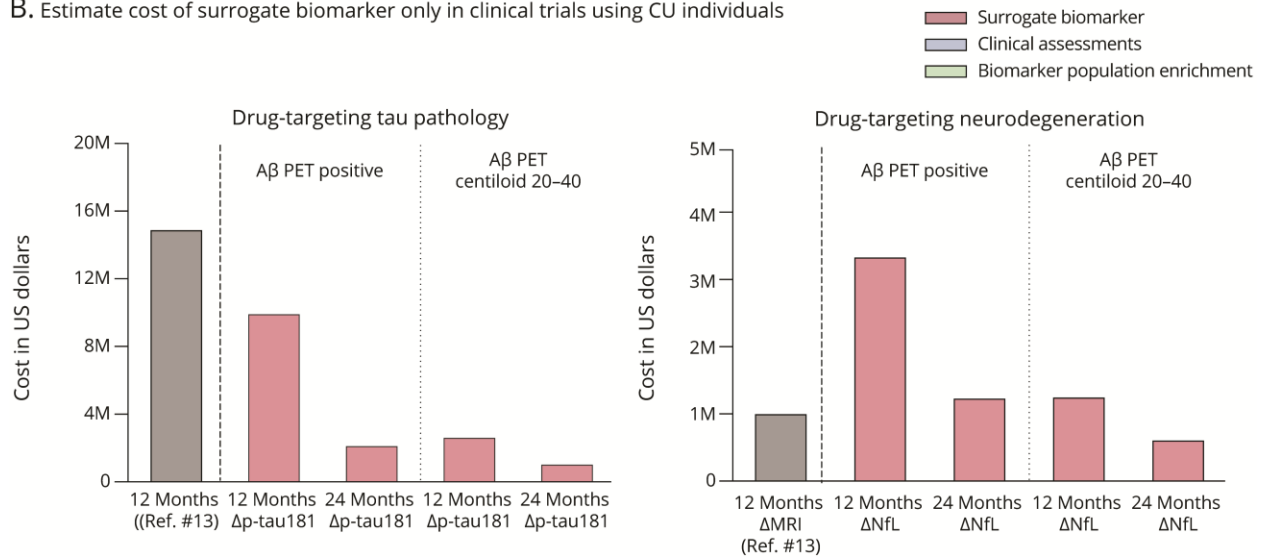


Figure 2. Cost-effectiveness of plasma biomarkers as surrogate for preventive clinical trials in CU individuals. (A) Sample sizes required for hypothetical clinical trials powered to use plasma biomarkers to monitor drug effects in CU older individuals. (B) Estimated cost with surrogate neuroimaging (Jack *et al.*¹³) and plasma biomarkers only for clinical trials powered to use changes in these biomarkers to monitor drug effects. (C) Estimated cost of biomarkers plus the costs with some of the other necessary tests that are influenced by total sample sizes, such as costs with the definition of A β positivity (using PET) for population enrichment and a standard clinical evaluation for each participant. The costs of clinical trials using changes in tau-PET (¹⁸F-flortaucipir uptake in the temporal lobe) or structural MRI (tensor-based morphology cortical volume) as surrogate were estimated based on the mean and SD of a 12-month change in these biomarkers reported previously by Jack and colleagues¹³. For the calculations presented in the figure, we used the following hypothesized costs: MRI = \$500; PET = \$3,000; plasma marker = \$200; Recruitment/consenting/clinical assessment = \$1,000. Assessments (except for biomarker of enrichment) were calculated to 2-time points (baseline and follow-up). Biomarker and procedure costs were estimations based on research assessments in the US. These costs are simplified estimations for the sake of analysis and can vary highly depending on several factors. We estimated an attrition rate of 10% in the calculations. Δ = longitudinal change. Reduction in the sample size was calculated in relation to the whole population.

A. Sample sizes required for clinical trials powered to use changes in biomarkers as surrogate



B. Estimate cost of surrogate biomarker only in clinical trials using CU individuals



C. Estimate cost of surrogate biomarker plus other related tests in clinical trials using CU individuals

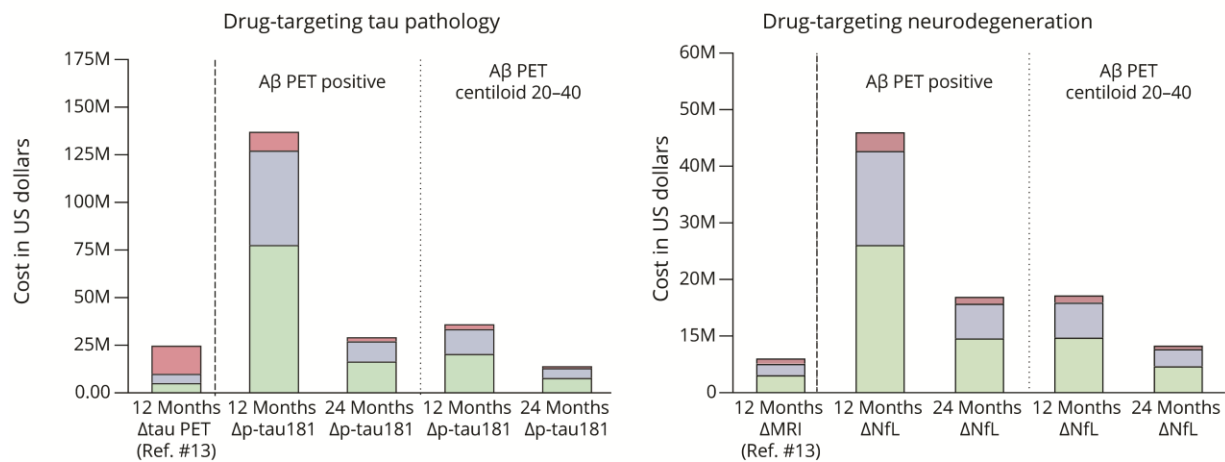
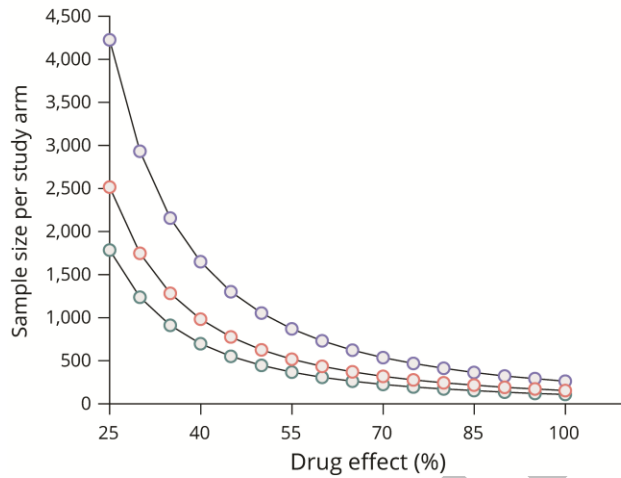
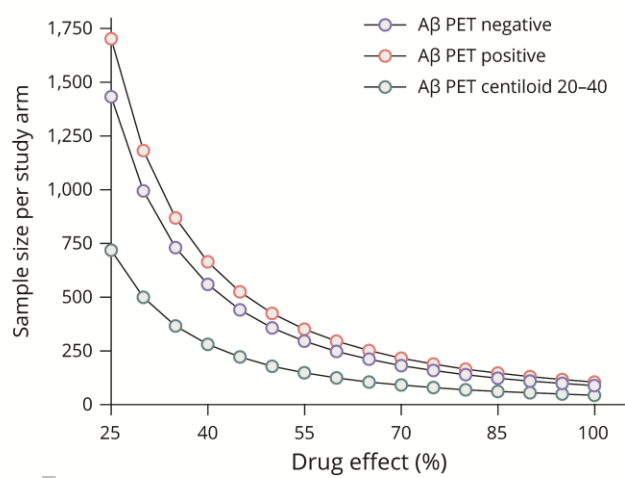


Figure 3. Sample sizes of clinical trials as a function of multiple estimated drug effects. The dots in the curves represent the sample size per study arm as a function of multiple hypothesized drug effects (greater than the tested 25% in reducing the rate of biomarker progression). **(A)** For plasma p-tau181, a drug effect large than 60% would represent the need for a sample size of less than 500 CU A β PET positive or A β PET Centiloid 20-40 per study arm. **(B)** For plasma NfL, a drug effect large than 45% would represent the need for a sample size of less than 500 CU A β PET positive or A β PET Centiloid 20-40 per study arm.

A. Drug effects in reducing change in plasma p-tau181



B. Drug effects in reducing change in plasma NfL



Neurology[®]

Potential Utility of Plasma P-Tau and Neurofilament Light Chain as Surrogate Biomarkers for Preventive Clinical Trials

Pamela Ferreira, João Pedro Ferrari-Souza, Cécile Tissot, et al.

Neurology published online March 6, 2023

DOI 10.1212/WNL.0000000000207115

This information is current as of March 6, 2023

Updated Information & Services	including high resolution figures, can be found at: http://n.neurology.org/content/early/2023/03/06/WNL.0000000000207115.full
Subspecialty Collections	This article, along with others on similar topics, appears in the following collection(s): Alzheimer's disease http://n.neurology.org/cgi/collection/alzheimers_disease Cognitive aging http://n.neurology.org/cgi/collection/cognitive_aging
Permissions & Licensing	Information about reproducing this article in parts (figures, tables) or in its entirety can be found online at: http://www.neurology.org/about/about_the_journal#permissions
Reprints	Information about ordering reprints can be found online: http://n.neurology.org/subscribers/advertise

Neurology® is the official journal of the American Academy of Neurology. Published continuously since 1951, it is now a weekly with 48 issues per year. Copyright © 2023 American Academy of Neurology. All rights reserved. Print ISSN: 0028-3878. Online ISSN: 1526-632X.

