

# Changes in the Diagnosis of Stroke and Cardiovascular Conditions in Primary Care During the First 2 COVID-19 Waves in the Netherlands

Premysl Velek, MSc, Marije J. Splinter, MSc, M. Kamran Ikram, PhD, M. Arfan Ikram, PhD, Maarten J.G. Leening, PhD, Johan van der Lei, PhD, Tim olde Hartman, PhD, Lilian L. Peters, PhD, Huibert Tange, PhD, Frans H. Rutten, PhD, Henk van Weert, PhD, Frank J. Wolters, PhD, Patrick J.E. Bindels, PhD, Silvan Licher, PhD, and Evelien I.T. de Schepper, PhD

## Correspondence

Mr. Velek  
p.velek@erasmusmc.nl

*Neurology*® 2022;98:e564–e572. doi:10.1212/WNL.00000000000013145

## Abstract

### Background and Objectives

Although there is evidence of disruption in acute cerebrovascular and cardiovascular care during the coronavirus disease 2019 (COVID-19) pandemic, its downstream effect in primary care is less clear. We investigated how the pandemic affected utilization of cerebrovascular and cardiovascular care in general practices (GPs) and determined changes in GP-recorded diagnoses of selected cerebrovascular and cardiovascular outcomes.

### Methods

From electronic health records of 166,929 primary care patients aged 30 or over within the Rotterdam region, the Netherlands, we extracted the number of consultations related to cerebrovascular and cardiovascular care, and first diagnoses of selected cerebrovascular and cardiovascular risk factors (hypertension, diabetes, lipid disorders), conditions, and events (angina, atrial fibrillation, TIA, myocardial infarction, stroke). We quantified changes in those outcomes during the first COVID-19 wave (March–May 2020) and thereafter (June–December 2020) by comparing them to the same period in 2016–2019. We also estimated the number of potentially missed diagnoses for each outcome.

### Results

The number of GP consultations related to cerebrovascular and cardiovascular care declined by 38% (0.62, 95% confidence interval 0.56–0.68) during the first wave, as compared to expected counts based on prepandemic levels. Substantial declines in the number of new diagnoses were observed for cerebrovascular events: 37% for TIA (0.63, 0.41–0.96) and 29% for stroke (0.71, 0.59–0.84), while no significant changes were observed for cardiovascular events (myocardial infarction [0.91, 0.74–1.14], angina [0.77, 0.48–1.25]). The counts across individual diagnoses recovered following June 2020, but the number of GP consultations related to cerebrovascular and cardiovascular care remained lower than expected throughout the June to December period (0.93, 0.88–0.98).

### Discussion

While new diagnoses of acute cardiovascular events remained stable during the COVID-19 pandemic, diagnoses of cerebrovascular events declined substantially compared to prepandemic levels, possibly due to incorrect perception of risk by patients. These findings emphasize

## RELATED ARTICLE

### Editorial

The Collateral Damage of COVID-19

Page 219

## MORE ONLINE

### COVID-19 Resources

For the latest articles, invited commentaries, and blogs from physicians around the world

[NPub.org/COVID19](https://NPub.org/COVID19)

From the Departments of Epidemiology (P.V., M.J.S., M.K.I., M.A.I., M.J.G.L., F.J.W., S.L.), General Practice (P.V., P.J.E.B., E.I.T.d.S.), Cardiology (M.J.G.L.), Neurology (M.K.I.), Medical Informatics (J.v.d.L.), and Radiology and Nuclear Medicine (F.J.W.), Erasmus MC–University Medical Centre Rotterdam; Department of Primary and Community Care (T.o.H.), Radboud Institute for Health Sciences, Radboud University Nijmegen Medical Centre; Department of General Practice & Elderly Medicine/Midwifery Science (L.L.P.), University Medical Centre Groningen; Midwifery Science, Vrije Universiteit Amsterdam (L.L.P.), and Department of General Practice (H.v.W.), Amsterdam Public Health, Amsterdam University Medical Centre; Department of Family Practice (H.T.), CAPHRI School for Public Health and Primary Care, Maastricht University; and Department of General Practice (F.H.R.), Julius Centre for Health Sciences and Primary Care, University Medical Centre Utrecht, the Netherlands.

Go to [Neurology.org/N](https://Neurology.org/N) for full disclosures. Funding information and disclosures deemed relevant by the authors, if any, are provided at the end of the article.

The Article Processing Charge was funded by the authors.

This is an open access article distributed under the terms of the Creative Commons Attribution-NonCommercial-NoDerivatives License 4.0 (CC BY-NC-ND), which permits downloading and sharing the work provided it is properly cited. The work cannot be changed in any way or used commercially without permission from the journal.

## Glossary

**COVID-19** = coronavirus disease 2019; **GP** = general practice; **MI** = myocardial infarction; **SARS-CoV-2** = severe acute respiratory syndrome coronavirus 2.

---

the need to improve symptom recognition of cerebrovascular events among the general public and to encourage urgent presentation despite any physical distancing measures.

---

There has been considerable interest in the effect of coronavirus disease 2019 (COVID-19) on specialized cerebrovascular and cardiovascular health care. There was a global decline of 11.5% in stroke hospital admissions<sup>1</sup> and the number of hospital admissions for acute coronary syndromes in England fell by 40% in March 2020.<sup>2</sup> Besides acute care, the pandemic is likely to have long-lasting and serious implications also for primary care. As health care resources were allocated to COVID-19 care, the use and provision of non-COVID-19 primary care were inevitably affected. In addition, people may have delayed seeking help, either for fear of infection by severe acute respiratory syndrome coronavirus 2 (SARS-CoV-2) or to avoid burdening health care providers. The risk of severe health complications due to delays or failure in seeking medical attention increases when risk factors or warning signs of underlying diseases are left unheeded.<sup>3</sup> This is particularly relevant for preventive care, or for symptoms that have been considered unimportant by patients due to incorrect perception of risk, as seems particularly the case for transient cerebrovascular symptoms.<sup>4</sup>

This population-based study complements the existing evidence on acute care and examines how the COVID-19 pandemic affected utilization of cerebrovascular and cardiovascular care in general practices (GPs). We leveraged data from primary care consultations to quantify the overall changes in cerebrovascular and cardiovascular care during the COVID-19 pandemic and accompanying physical distancing measures taken by national governments. We also determined changes in the number of diagnoses of individual cerebrovascular and cardiovascular risk factors and events as registered by general practitioners. Finally, we estimated the number of cerebrovascular and cardiovascular diagnoses among community-dwelling individuals that may have been missed during the pandemic.

## Methods

### Data Sources and Study Population

We conducted a population-based cohort study using the Rijnmond Primary Care database, a region-specific derivative of the Integrated Primary Care Information database,<sup>5</sup> managed by the Department of General Practice of the Erasmus MC–University Medical Centre Rotterdam. The data cover information about approximately 18% of the population of the greater Rotterdam area in the Netherlands, equally distributed

across the region. The database contains information about patients and episodes of care routinely collected by general practitioners: diagnoses, symptoms, clinical findings, test results, drug prescriptions, and other relevant information. The Rotterdam region is a dense urban area; 36% of the residents have non-Dutch background, of which 70% have non-Western background.<sup>6</sup> The average distance to the nearest GP practice is 0.6 kilometers (0.37 miles).<sup>7</sup> The study period started on 1 January 2016 and ended on 31 December 2020.

We included all patients aged 30 years and over. A patient's period of eligibility started on January 1, 2016; 1 year from registration within a GP; date of turning 30 years of age; or from the date of the inclusion of the GP in Rijnmond Primary Care database (whichever came later). The eligibility period ended by patient's death, transferring to another practice, the end of data collection from the practice, or on December 31, 2020 (whichever came first).

The study was carried out following the RECORD guidelines.<sup>8</sup>

### Outcomes and Procedures

We focused on 2 types of outcomes: (1) the overall number of GP consultations related to cerebrovascular and cardiovascular care and (2) new diagnoses of specific risk factors (hypertension, type 2 diabetes, and lipid disorders) and cerebrovascular and cardiovascular events (myocardial infarction [MI], angina pectoris, atrial fibrillation, stroke, and TIA).<sup>9</sup>

A GP consultation was defined as any contact between a GP and a patient (in person, by phone, or online), in which symptoms, complaints, diagnosis, or treatment were discussed. The first diagnosis was defined as a GP consultation, for which a GP entered a new diagnosis in the patient's record, previously not recorded in the patient's history. To include also patients who were diagnosed in hospital or during out-of-hours services of primary care, we also included diagnosis records based on correspondence between GPs and specialist care providers.

The selected diagnoses were identified in the patients' records based on a country-specific version of the International Classification of Primary Care. The classification is managed by the Dutch College of General Practitioners<sup>10</sup> and is adopted by all Dutch GPs (see Supplementary materials, eTable 1, [links.lww.com/WNL/B688](https://links.lww.com/WNL/B688)).

## Data Analysis

The analyses were conducted in 4 steps. First, we extracted the total number of GP consultations related to all cerebrovascular and cardiovascular diagnoses and symptoms for each month in the study period and the monthly number of new diagnoses for each individual outcome of interest. The sample size was calculated for each month and each individual outcome (the start date of the eligibility period was set on the first day of the month following the exact start date; the end date was set on the last day of the month in which the eligibility period ended). Patients who were already diagnosed with one of the selected outcomes were excluded from the corresponding analyses following their date of diagnosis. Patients with a history of any of the outcomes of interest before study entry were excluded from the sample for this particular outcome.

Second, we fitted a negative binomial regression model to the monthly counts of GP consultations and separately to monthly counts of first diagnosis for each outcome of interest. We tested for overdispersion in our data and used Poisson regression for outcomes in which we did not detect statistically significant overdispersion. The seasonal pattern of the data was modeled with a categorical variable indicating a calendar month for each data point; a possible long-term linear trend in the outcomes was modeled with a covariate indicating the number of months since the start of the study.

Third, we conducted segmented time series analyses to quantify the level change following the implementation of governmental COVID-19 control measures. We included 2 with-restriction variables in the model that divided the data into 3 segments: the pre-COVID-19 period (January 2016–February 2020), the period of the first lockdown in the Netherlands (March–May 2020), and the period after the first lockdown (June–December 2020). The first variable defined the period of the first lockdown and was set to 0 for all months in the study, except for March, April, and May 2020. Since the nationwide lockdown in the Netherlands was introduced on March 11 and ended on May 10, 2020, these 2 months were considered transition periods with only a partial impact of the pandemic. The first with-restriction value was therefore set to 1 for April and to 0.7 for March and May 2020. The value of 0.7 provided the best fit to the data, based on the root square error, across all outcomes. The second with-restriction variable defined the period following the spring lockdown; it was set to 0 for all months before June 2020 and to 1 for all months afterwards (June–December 2020). The estimated coefficients of the 2 with-restriction variables defined the effect of the pandemic throughout 2020: the first with-restriction coefficient represents the relative decline in the monthly counts as a proportion of expected counts during the first COVID-19 wave, the second with-restriction coefficient estimated the relative decline in the monthly counts in the period after the first COVID-19 wave (values less than 1 indicate a decline and values greater than 1 indicate an increase.) To account for heteroscedasticity and autocorrelation in the error terms, the

standard errors of the estimates and the coefficients were calculated using heteroscedasticity and autocorrelation consistent covariance matrix estimation.<sup>11</sup> The natural logarithm of the sample size was used as an offset to control for the changing sample size throughout the study period. Detailed specification of the model is available in the Supplementary material (eAppendix 1, [links.lww.com/WNL/B688](https://links.lww.com/WNL/B688)).

Fourth, to estimate the absolute effect on the number of new diagnoses, we fitted the same model again, but with the 2 with-restriction variables set to zero for all months. The fitted values of the model for March through December 2020 thus represented the expected counts in the counterfactual scenario where no pandemic and no restrictions took place. By comparing these expected counts with observed counts for each calendar month from March to December 2020, we estimated the cumulative number of potentially missed or delayed diagnoses.

To show how the observed counts during the pandemic period differed from those observed during the prepandemic period, we plotted the observed counts for each calendar month in 2020 against observed counts averaged over 2 prepandemic periods: 2018–2019 and 2016–2019 (eFigure 1.1 and eFigure 1.2, Supplementary material, [links.lww.com/WNL/B688](https://links.lww.com/WNL/B688)).

We conducted a sensitivity analysis to assess the robustness of our findings. We reanalyzed the data in which we set the first with-restriction value for March and May 2020 to 0.2, 0.4, 0.6, and 0.8 in order to account for potential variation of the lockdown impact on the main results.

Data extraction and analyses were carried out in R (version 4.0.0),<sup>12</sup> data were prepared and plotted using the tidyverse collection of packages,<sup>13</sup> and the negative binomial regression model was fitted using the MASS package.<sup>14</sup>

## Standard Protocol Approvals, Registrations, and Patient Consents

The study was approved by the Governance Board of Rijnmond Primary Care (project number 2020.012). All patient data are deidentified for research purposes; no patient consent was therefore required.

## Data Availability

Due to legal restraints, data are not made publicly available in a repository. Access to the data will be provided upon reasonable request and subject to approval by the Governance Board of Rijnmond Primary Care.

## Results

### Population Characteristics

The total study population (patients over 30 years of age) grew from 122,302 patients in January 2016 to 166,929 in December 2020, as more GP practices were included in the

database. The average age of the patients was 55.7 years; 51% of the population were female. The population characteristics remained stable throughout the study period. Detailed characteristics of the study population and the relevant subgroups are available in the Supplementary material (eTable 2, eTable 3, [links.lww.com/WNL/B688](https://links.lww.com/WNL/B688)).

The Netherlands experienced 2 COVID-19 waves in 2020. The first wave peaked on March 27, 2020, with 620 daily hospital admissions (3.56 per 100,000 people); the second wave had 2 peaks, the first on November 2, 2020, with 399 daily hospital admissions (2.29 per 100,000 people), and the second on December 28, 2020, with 469 daily hospital admissions (2.69 per 100,000 people).<sup>15</sup> The Rotterdam region recorded 47 daily hospital admissions (3.21 per 100,000 people) at the peak of the first wave, 53 daily admissions at the first peak of the second wave (3.62 per 100,000 people), and 37 daily admissions at the second peak (2.53 per 100,000 people).<sup>16</sup>

### Changes in the Total Number of GP Consultations Related to Cerebrovascular and Cardiovascular Care

Immediately after the start of the first national lockdown in the Netherlands, the number of GP consultations related to cerebrovascular and cardiovascular care declined to 62% of the expected count (0.62; 95% confidence interval 0.56–0.68). After the initial steep decline, the number of consultations returned closer to prepandemic level, but remained lower than the expected number throughout the rest of 2020 (0.93; 0.88–0.98) (Figure 1).

The decline in GP consultations was higher for women than for men: 0.59 (0.54–0.66) vs 0.64 (0.59–0.71). Greater declines were observed for older adults: the largest relative decline was

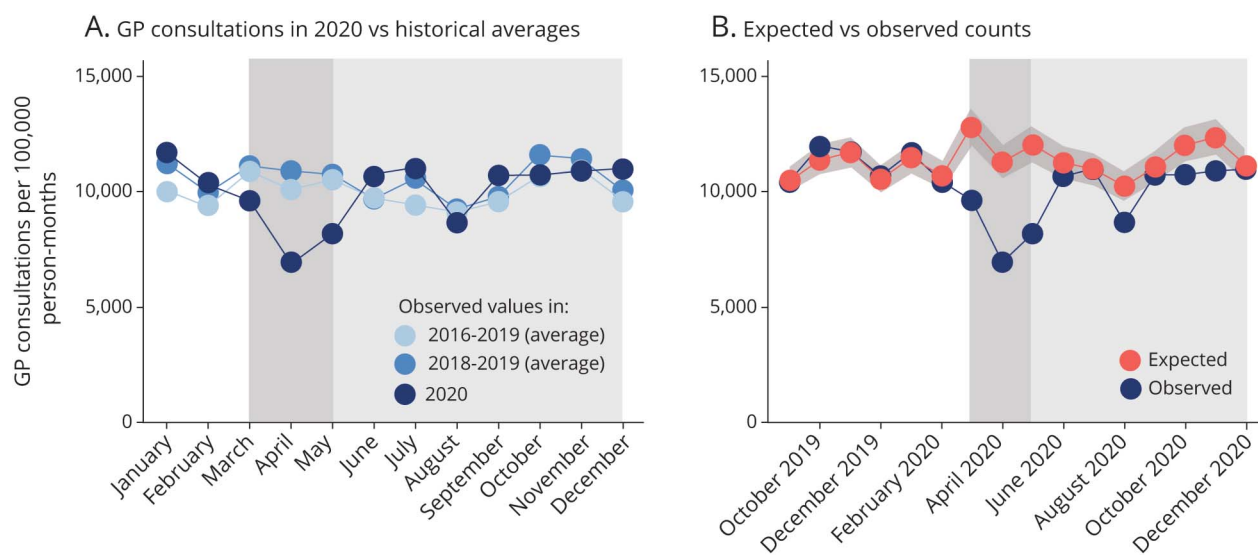
observed for people between 66 and 75 years of age (0.58; 0.52–0.65); the smallest decline was observed for the youngest group in this study (31–45 years) (0.74; 0.65–0.85). The youngest group is the only age group for which we observed a statistically significant increase in the number of consultations in the second half of 2020 (1.08; 1.00–1.17) as compared to the expected counts (see Supplementary material, eFigure 2, eFigure 3, [links.lww.com/WNL/B688](https://links.lww.com/WNL/B688)).

### Changes in the Number of New Diagnoses Across Cerebrovascular and Cardiovascular Events and Risk Factors

While the number of first diagnoses for cerebrovascular events declined at the start of the spring lockdown in the Netherlands (TIA 0.63 [0.41–0.96], stroke 0.71 [0.59–0.84]), the number of first diagnoses for cardiovascular events did not change significantly (MI 0.91 [0.73–1.13], angina pectoris 0.77 [0.48–1.25]). Significant changes were also observed for risk factors (hypertension 0.47 [0.38–0.57], type 2 diabetes 0.74 [0.59–0.92], lipid disorders 0.54 [0.35–0.82]) and for atrial fibrillation (0.69 [0.58–0.81]). The observed monthly numbers of new diagnoses for each outcome in 2020, compared to the estimated mean expected numbers per 100,000 person-months, is represented in Figure 2 and Figure 3. The relative decline for each outcome as compared to expected levels is presented in Figure 4. Sensitivity analysis using varying values for the first with-restriction variable for the 2 transition months (March and May 2020) provided consistent results for all outcomes (see Supplementary material, eTable 4, [links.lww.com/WNL/B688](https://links.lww.com/WNL/B688)).

From June 2020 onwards, the monthly counts of first diagnoses increased and returned to their pre-COVID-19 levels,

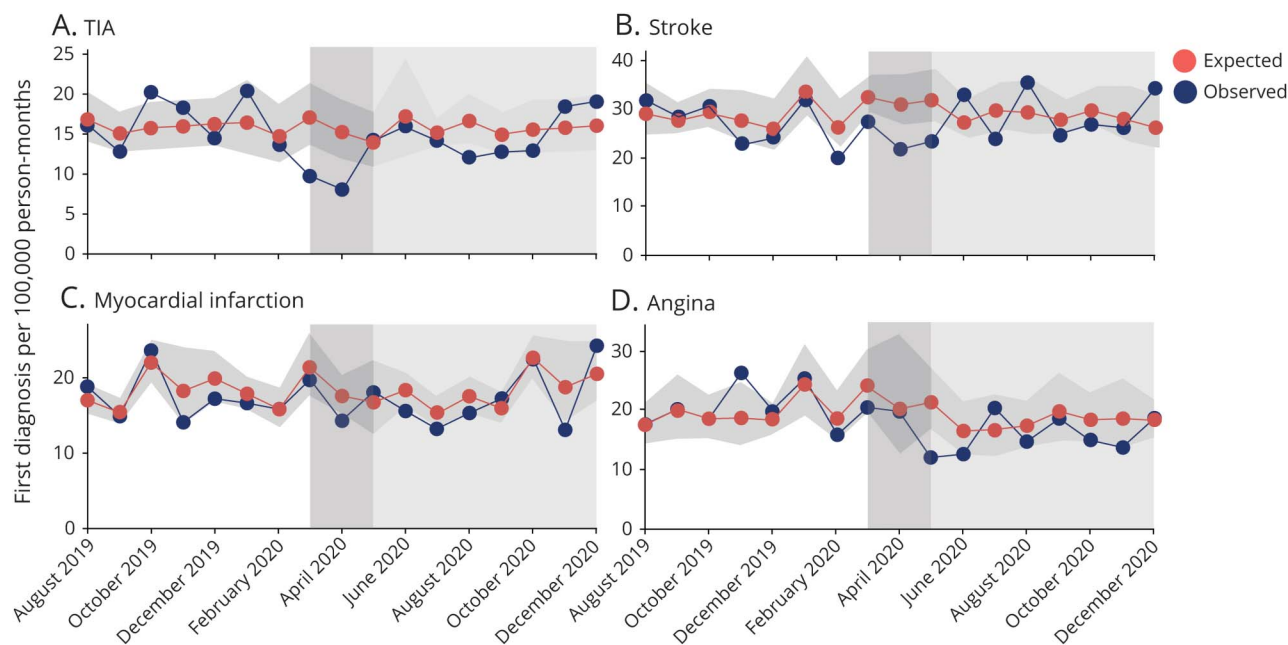
**Figure 1** All General Practice Consultations on Cardiovascular and Cerebrovascular Conditions



(A) Number of general practice (GP) consultations related to cardiovascular care in 2020 compared to historical averages. (B) Number of GP consultations related to cardiovascular care in 2020 compared to estimated expected number of GP consultations. The shaded area indicates the pandemic period with the period of the first lockdown in the Netherlands (March 15 to May 11, 2020) highlighted.



**Figure 2** Observed vs Expected Monthly Number of New Diagnoses: Cardiovascular and Cerebrovascular Events



Number of new diagnoses of cerebrovascular ([A] TIA, [B] stroke) and cardiovascular events ([C] myocardial infarction, [D] angina): observed and expected counts of new diagnoses (August 2019–December 2020). The shaded area indicates the pandemic period with the period of the first lockdown in the Netherlands (March 15, 2020–May 11, 2020) highlighted.

but, with the exception of lipid disorders, did not exceed the expected counts. The rate of new diagnosis for lipid disorders exceeded significantly the expected rate for all months from June 2020 onwards, with a rate of change of 1.57 (1.43–1.74) (Figure 4B).

Atrial fibrillation and stroke were the only diagnoses with differences between men and women during the lockdown in March, April, and May 2020. A decline was observed among women for atrial fibrillation (0.53, 0.41–0.68), whereas no significant change was observed among men (0.82, 0.64–1.06). For stroke, the change for women was 0.52 (0.42–0.66) and 0.88 (0.62–1.26) for men (see Supplementary material, eFigure 4.1, [links.lww.com/WNL/B688](https://links.lww.com/WNL/B688)).

### Number of Potentially Missed Cerebrovascular and Cardiovascular Diagnoses in Primary Care

The effect of the COVID-19 pandemic on cerebrovascular and cardiovascular care in terms of number of potentially missed cases for each diagnosis is presented in Table 1. These numbers reflect the difference between the observed number of first diagnoses during the COVID-19 pandemic and the predicted number of first diagnoses, based on our model estimates. The highest number of potentially missed cases was for hypertension with 303 fewer diagnoses in the study population from March to December 2020 (328 diagnoses per 100,000 person-years). There were 39 fewer diagnoses of stroke and 35 fewer diagnoses of TIA in the study population (25 and 26 diagnoses per 100,000 person-years, respectively).

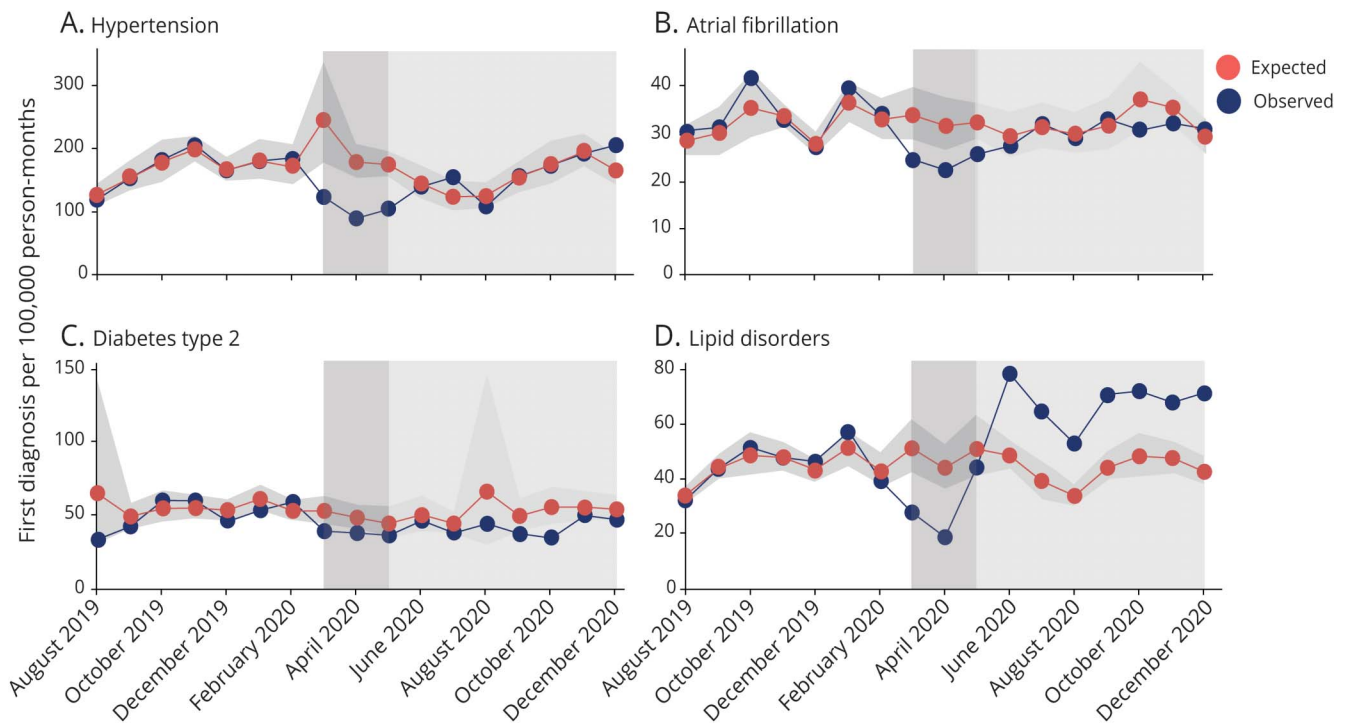
Contrary to all the other outcomes, the number of new diagnoses of lipid disorders increased by >100 diagnoses per 100,000 person-years as compared to the expected counts.

## Discussion

The overall number of GP consultations related to cerebrovascular and cardiovascular care dropped by 38% during the first lockdown and remained below prepandemic levels in the second half of 2020. The number of new diagnoses of cerebrovascular events declined substantially, in contrast with the number of new diagnoses of acute cardiovascular events, which remained stable. This suggests that patients may be less alarmed by symptoms suggestive of TIA or stroke (as compared to MI) and therefore less likely to contact their GPs.<sup>4</sup> This behavior might be further reinforced during lockdowns when people with cerebrovascular symptoms may avoid seeking care due to fear of COVID-19 and related complications, especially when public authorities urge them to stay home.<sup>17</sup>

Previous studies showed a substantial decline in GP consultations across a range of diagnoses and health conditions during the first half of 2020, including acute cerebrovascular and cardiovascular events.<sup>18–20</sup> Qualitative studies also documented disruption to primary care across a range of European countries.<sup>21</sup> A global observational study found 11.5% decline in stroke admissions (including TIA) during the initial 4 months of the pandemic (March–June 2020),<sup>1</sup>

**Figure 3** Observed vs Expected Monthly Number of New Diagnoses: Risk Factors

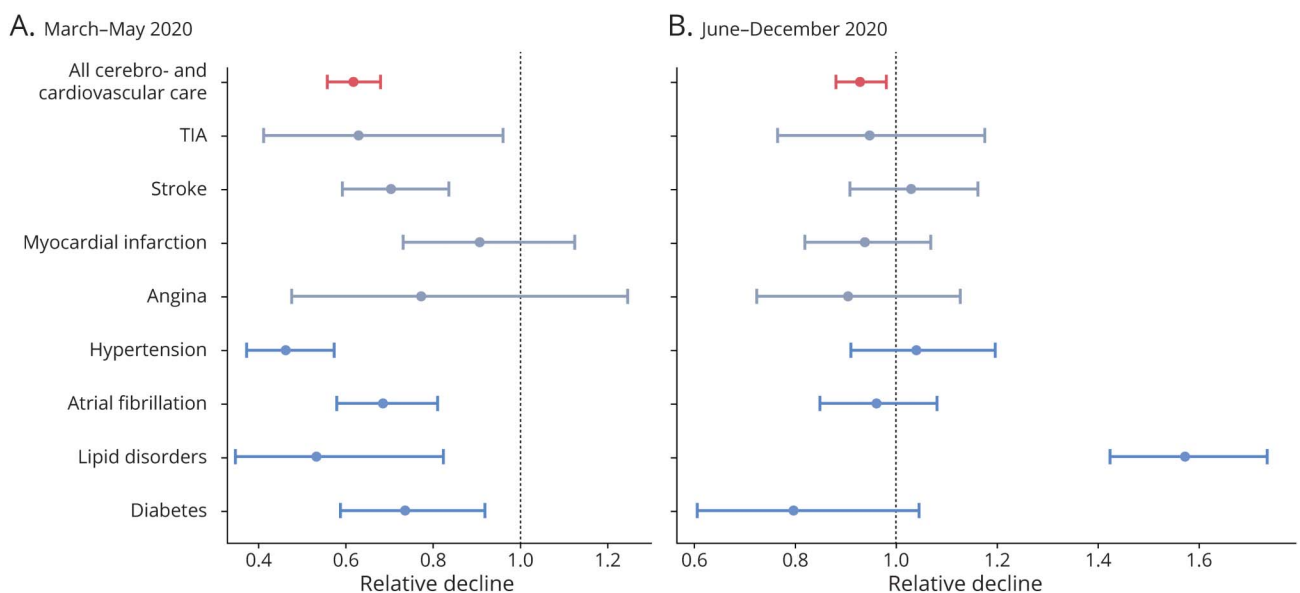


Number of new diagnoses for (A) hypertension, (B) atrial fibrillation, (C) type 2 diabetes, and (D) lipid disorders: observed and expected counts of new diagnoses (August 2019 to December 2020). The shaded area indicates the pandemic period with the period of the first lockdown in the Netherlands (15 March to 11 May 2020) highlighted.

which is in line with our finding. A United Kingdom-wide study focusing on missed GP contacts for acute events found decline by 0.63 in the number of contacts for TIA in March

2020 and 0.59 for strokes. Contrary to our study, the authors also observed a substantial decline in the number of GP contacts for MI, unstable angina, and diabetes emergencies.<sup>20</sup>

**Figure 4** Relative Decline in the Number of First Diagnoses



Relative decline in the number of first diagnoses for all cerebrovascular and cardiovascular general practice consultations and for individual outcomes compared to expected numbers. (A) March to May 2020; (B) June to December 2020.

**Table 1** Expected and Observed Numbers of First Diagnoses and Estimated Differences in the Number of New Diagnoses for Each Outcome

	Total expected number of first diagnoses in the study population (March–December 2020)	Total observed number of first diagnoses in the study population (March–December 2020)	Absolute difference between expected and observed in number of first diagnoses in the study population (March–December 2020)	Difference between expected and observed in number of first diagnoses in the study population (March–December 2020) per 100,000 person-years
<b>Hypertension</b>	1792	1,489	–303	–274
<b>Atrial fibrillation</b>	471	415	–56	–43
<b>Lipid disorders</b>	595	737	+142	+108
<b>Type 2 diabetes</b>	684	533	–151	–122
<b>TIA</b>	228	193	–35	–26
<b>Angina</b>	274	233	–41	–31
<b>Stroke</b>	427	388	–39	–25
<b>Myocardial infarction</b>	262	237	–25	–16

The number of potentially missed diagnoses of stroke, TIA, atrial fibrillation, and risk factors may lead to increased health complications. The risk of recurrent stroke for people after their first stroke is estimated to be 11% within 1 year and 26% within 5 years.<sup>22</sup> It has been suggested that timely secondary preventive measures can reduce the risk of recurrent cardiovascular events by up to 70%.<sup>3,23</sup> Patients who did not seek medical attention during the pandemic for cerebrovascular symptoms, and hence did not start risk-lowering treatment, may therefore be at increased risk of repeat neurologic events and death. The composite risk of stroke, acute coronary syndrome, or death from cardiovascular causes at 5 years after TIA is estimated to be nearly twice as high for people without any risk-reduction measures.<sup>3</sup>

The high number of potentially missed diagnoses of cerebrovascular and cardiovascular risk factors and atrial fibrillation is worrying, given the established benefits of preventive interventions to reduce the risk of cerebrovascular and cardiovascular events and mortality.<sup>24,25</sup> Hypertension is the only outcome we studied in which the effect of the pandemic was detectable at the level of individual GPs: the total potentially missed diagnoses of hypertension equaled around 8 cases per year per general practitioner (with an average number of patients per GP in the Netherlands being 2,300).<sup>26</sup>

Limitations of our study include possible inconsistent recording practices among GPs. Furthermore, interventions at the level of individual GP practices might have influenced our data and our results. We also did not include recurrent events, which may follow different patterns of health-seeking behavior as those who have already experienced a cerebrovascular or cardiovascular event might be more likely to recognize their symptoms. We also could not distinguish between patients

diagnosed by GPs and patients diagnosed in hospital/emergency departments (who were later referred to their GP). It is possible that the effect of the pandemic was different for these 2 groups of patients. Finally, we did not have access to data on education levels, smoking, and other lifestyle indicators, which might have provided greater insight into health care avoidance patterns.

A key strength of this study is that we assessed the effect of COVID-19 on primary care by the inclusion of a broad spectrum of cerebrovascular and cardiovascular conditions, also including risk factors. As our data covered the full year of 2020, we were also able to examine changes in health care seeking behavior over a longer time span.

The COVID-19 pandemic has a potentially long-lasting effect on the prognosis of cerebrovascular and cardiovascular diseases due to missing or delayed diagnosing of risk factors and most notably cerebrovascular events. Even though the number of new diagnoses returned to the expected levels in the second half of 2020, the number of potentially missed diagnoses during the first wave were not recuperated. The decline in the number of first diagnoses of stroke and TIA calls for improvement of symptom recognition of cerebrovascular events among the general public and for awareness campaigns to encourage urgent presentation despite any existing physical distancing measures.

The challenge for the near future is to identify patients who avoided health care and develop strategies for cerebrovascular and cardiovascular primary care that will minimize the consequences of undiagnosed risk factors and events during the COVID-19 pandemic. A critical question is to assess whether this disruption in primary care will lead to increased cerebrovascular and cardiovascular morbidity and mortality in the future.

## Study Funding

This work was funded by the Dutch organization for health research and health innovation (ZonMw), project number 10430022010016. P.V., E.I.T.d.S., and P.J.E.B. had full access to the data reported in the study. The funders of the study had no role in the study design, data collection, data analysis, data interpretation, or writing of the report.

## Disclosure

Some authors report receiving consulting fees and research support from health care companies, government agencies, and foundations. Go to [Neurology.org/N](https://www.neurology.org/N) for full disclosures.

## Publication History

Received by *Neurology* July 5, 2021. Accepted in final form November 23, 2021.

## Appendix Authors

Name	Location	Contribution
<b>Premysl Velek, MSc</b>	Departments of Epidemiology and General Practice, Erasmus MC–University Medical Centre Rotterdam, the Netherlands	Drafting/revision of the manuscript for content, including medical writing for content; analysis or interpretation of data
<b>Marije J. Splinter, MSc</b>	Department of Epidemiology, Erasmus MC–University Medical Centre Rotterdam, the Netherlands	Drafting/revision of the manuscript for content, including medical writing for content
<b>M. Kamran Ikram, PhD</b>	Departments of Epidemiology and Neurology, Erasmus MC–University Medical Centre Rotterdam, the Netherlands	Drafting/revision of the manuscript for content, including medical writing for content
<b>M. Arfan Ikram, PhD</b>	Department of Epidemiology, Erasmus MC–University Medical Centre Rotterdam, the Netherlands	Drafting/revision of the manuscript for content, including medical writing for content
<b>Maarten J.G. Leening, PhD</b>	Departments of Epidemiology and Cardiology, Erasmus MC–University Medical Centre Rotterdam, the Netherlands	Drafting/revision of the manuscript for content, including medical writing for content
<b>Johan van der Lei, PhD</b>	Department of Medical Informatics, Erasmus MC–University Medical Centre Rotterdam, the Netherlands	Drafting/revision of the manuscript for content, including medical writing for content; major role in the acquisition of data
<b>Tim olde Hartman, PhD</b>	Department of Primary and Community Care, Radboud Institute for Health Sciences, Radboud University Nijmegen Medical Centre, the Netherlands	Drafting/revision of the manuscript for content, including medical writing for content
<b>Lilian L. Peters, PhD</b>	Department of General Practice & Elderly Medicine/Midwifery Science, University Medical Centre Groningen; Amsterdam University Medical Centre, Vrije Universiteit Amsterdam, Midwifery Science, AVAG, Amsterdam Public Health, the Netherlands	Drafting/revision of the manuscript for content, including medical writing for content

## Appendix (continued)

Name	Location	Contribution
<b>Huibert Tange, PhD</b>	Department of Family Practice, CAPHRI School for Public Health and Primary Care, Maastricht University, the Netherlands	Drafting/revision of the manuscript for content, including medical writing for content
<b>Frans H. Rutten, PhD</b>	Department of General Practice, Julius Centre for Health Sciences and Primary Care, University Medical Centre Utrecht, the Netherlands	Drafting/revision of the manuscript for content, including medical writing for content
<b>Henk van Weert, PhD</b>	Department of General Practice, Amsterdam Public Health, Amsterdam Universities Medical Centre, the Netherlands	Drafting/revision of the manuscript for content, including medical writing for content
<b>Frank J. Wolters, PhD</b>	Departments of Epidemiology and Radiology and Nuclear Medicine, Erasmus MC–University Medical Centre Rotterdam, the Netherlands	Drafting/revision of the manuscript for content, including medical writing for content
<b>Patrick J.E. Bindels, PhD</b>	Department of General Practice, Erasmus MC–University Medical Centre Rotterdam, the Netherlands	Drafting/revision of the manuscript for content, including medical writing for content
<b>Silvan Licher, PhD</b>	Department of Epidemiology, Erasmus MC–University Medical Centre Rotterdam, the Netherlands	Drafting/revision of the manuscript for content, including medical writing for content; study concept or design; analysis or interpretation of data
<b>Evelien I.T. de Schepper, PhD</b>	Department of General Practice, Erasmus MC–University Medical Centre Rotterdam, the Netherlands	Drafting/revision of the manuscript for content, including medical writing for content; major role in the acquisition of data; study concept or design; analysis or interpretation of data

## References

1. Nogueira RG, Qureshi MM, Abdalkader M, et al. Global impact of COVID-19 on stroke care and intravenous thrombolysis. *Neurology*. 2021;96(23):e2824–e2838.
2. Mafham MM, Spata E, Goldacre R, et al. COVID-19 pandemic and admission rates for and management of acute coronary syndromes in England. *Lancet*. 2020;396(10248):381–389.
3. Amarenco P, Lavallée PC, Monteiro Tavares L, et al. Five-year risk of stroke after TIA or minor ischemic stroke. *N Engl J Med*. 2018;378(23):2182–2190.
4. Wolters FJ, Li L, Gutnikov SA, Mehta Z, Rothwell PM. Medical attention seeking after transient ischemic attack and minor stroke before and after the UK Face, Arm, Speech, Time (FAST) public education campaign: results from the oxford vascular study. *JAMA Neurol*. 2018;75(10):1225–1233.
5. Vlug AE, van der Lei J, Mosseveld BM, et al. Postmarketing surveillance based on electronic patient records: the IPCI project. *Methods Inf Med*. 1999;38(4-5):339–344.
6. *Bevolking: Leeftijd, Migratieachtergrond, Geslacht, Regio, 1 Jan. 1996-2020* [online]. Accessed September 30, 2021. [opendata.cbs.nl/#/CBS/nl/dataset/37713/table](https://opendata.cbs.nl/#/CBS/nl/dataset/37713/table)
7. *StatLine. Huisarts in 2019 Gemiddeld Op 1 Kilometer Afstand* [online]. Accessed September 30, 2021. [cbs.nl/nl-nl/nieuws/2020/17/huisarts-in-2019-gemiddeld-op-1-kilometer-afstand](https://cbs.nl/nl-nl/nieuws/2020/17/huisarts-in-2019-gemiddeld-op-1-kilometer-afstand)
8. Benchimol EL, Smeeth L, Guttman A, et al. The Reporting of Studies Conducted Using Observational Routinely-Collected Health Data (RECORD) statement. *PLOS Med*. 2015;12(10):e1001885.
9. Leening MJ, Kavousi M, Heeringa J, et al. Methods of data collection and definitions of cardiac outcomes in the Rotterdam Study. *Eur J Epidemiol*. 2012;27(3):173–185.
10. Genootschap NH. *NHG-tabel 24-ICPC-Versie 8*. 2020.
11. Zeileis A. Object-oriented computation of sandwich estimators. *J Stat Softw*. 2006; 1(9):2006.
12. *R: A Language and Environment for Statistical Computing* [computer program]. R Foundation for Statistical Computing; 2020.
13. Wickham H, Averick M, Bryan J, et al. Welcome to the tidyverse. *J Open Source Softw*. 2019;4.
14. VW N, RB D. *Modern Applied Statistics with S*. 4th ed. Springer; 2002.



15. *Ontwikkeling COVID-19 in grafieken [online]*. Accessed September 30, 2021. [rivm.nl/coronavirus-covid-19/grafieken](https://rivm.nl/coronavirus-covid-19/grafieken)
16. *Gemeld aantal ziekenhuisopnames op één dag van inwoners van veiligheidsregio Rotterdam-Rijnmond [online]*. Accessed September 30, 2021. [coronadashboard.rijksoverheid.nl/veiligheidsregio/VR17/ziekenhuis-opnames](https://coronadashboard.rijksoverheid.nl/veiligheidsregio/VR17/ziekenhuis-opnames)
17. Henrique D, Pedro SCM, Sheila COM, et al. Decrease in hospital admissions for transient ischemic attack, mild, and moderate stroke during the COVID-19 era. *Stroke*. 2020;51(8):2315-2321.
18. Williams R, Jenkins DA, Ashcroft DM, et al. Diagnosis of physical and mental health conditions in primary care during the COVID-19 pandemic: a retrospective cohort study. *Lancet Public Health*. 2020;5(10):e543-e550.
19. Carr MJ, Steeg S, Webb RT, et al. Effects of the COVID-19 pandemic on primary care-recorded mental illness and self-harm episodes in the UK: a population-based cohort study. *Lancet Public Health*. 2021;6(2):e124-e135.
20. Mansfield KE, Mathur R, Tazare J, et al. Indirect acute effects of the COVID-19 pandemic on physical and mental health in the UK: a population-based study. *Lancet Digital Health*. 2021;3(4):e217-e230.
21. Wanat M, Hoste M, Gobat N, et al. Transformation of primary care during the COVID-19 pandemic: experiences of healthcare professionals in eight European countries. *Br J Gen Pract*. 2021;71(709):e634-e642.
22. Keerthi MM, Charles DAW, Anthony GR, Peter UH, Peter LK-R, Andrew PG. Risk and cumulative risk of stroke recurrence. *Stroke*. 2011;42(S):1489-1494.
23. Pedersen RA, Petursson H, Hetlevik I. Stroke follow-up in primary care: a prospective cohort study on guideline adherence. *BMC Fam Pract*. 2018;19(1):179.
24. Blood Pressure Lowering Treatment Trialists Collaboration. Pharmacological blood pressure lowering for primary and secondary prevention of cardiovascular disease across different levels of blood pressure: an individual participant-level data meta-analysis. *Lancet*. 2021;397(10285):1625-1636.
25. Ruff CT, Giugliano RP, Braunwald E, et al. Comparison of the efficacy and safety of new oral anticoagulants with warfarin in patients with atrial fibrillation: a meta-analysis of randomised trials. *Lancet*. 2014;383(9921):955-962.
26. Kringos DS, Boerma WGW. *Building primary care in a changing Europe: Case studies, Observatory Studies Series*; Vol 40, 20 ed. European Observatory on Health Systems and Policies; 2015.

# Neurology®

## Changes in the Diagnosis of Stroke and Cardiovascular Conditions in Primary Care During the First 2 COVID-19 Waves in the Netherlands

Premysl Velek, Marije J. Splinter, M. Kamran Ikram, et al.

*Neurology* 2022;98:e564-e572 Published Online before print December 29, 2021

DOI 10.1212/WNL.0000000000013145

**This information is current as of December 29, 2021**

<b>Updated Information &amp; Services</b>	including high resolution figures, can be found at: <a href="http://n.neurology.org/content/98/6/e564.full">http://n.neurology.org/content/98/6/e564.full</a>
<b>References</b>	This article cites 17 articles, 3 of which you can access for free at: <a href="http://n.neurology.org/content/98/6/e564.full#ref-list-1">http://n.neurology.org/content/98/6/e564.full#ref-list-1</a>
<b>Subspecialty Collections</b>	This article, along with others on similar topics, appears in the following collection(s): <b>All Cerebrovascular disease/Stroke</b> <a href="http://n.neurology.org/cgi/collection/all_cerebrovascular_disease_stroke">http://n.neurology.org/cgi/collection/all_cerebrovascular_disease_stroke</a> <b>Cardiac</b> <a href="http://n.neurology.org/cgi/collection/cardiac">http://n.neurology.org/cgi/collection/cardiac</a> <b>COVID-19</b> <a href="http://n.neurology.org/cgi/collection/covid_19">http://n.neurology.org/cgi/collection/covid_19</a> <b>Electronic medical records</b> <a href="http://n.neurology.org/cgi/collection/electronic_medical_records">http://n.neurology.org/cgi/collection/electronic_medical_records</a> <b>Stroke prevention</b> <a href="http://n.neurology.org/cgi/collection/stroke_prevention">http://n.neurology.org/cgi/collection/stroke_prevention</a>
<b>Permissions &amp; Licensing</b>	Information about reproducing this article in parts (figures, tables) or in its entirety can be found online at: <a href="http://www.neurology.org/about/about_the_journal#permissions">http://www.neurology.org/about/about_the_journal#permissions</a>
<b>Reprints</b>	Information about ordering reprints can be found online: <a href="http://n.neurology.org/subscribers/advertise">http://n.neurology.org/subscribers/advertise</a>

*Neurology*® is the official journal of the American Academy of Neurology. Published continuously since 1951, it is now a weekly with 48 issues per year. Copyright © 2021 The Author(s). Published by Wolters Kluwer Health, Inc. on behalf of the American Academy of Neurology. All rights reserved. Print ISSN: 0028-3878. Online ISSN: 1526-632X.

