

Teaching Video NeuroImage: Aurora and Dusk of the Lentiform Fork Sign in a Patient With Reversible Dystonia

Bruna Kroeff, MD, Eduardo Hummelgen, MD, Giorgio Fabiani, MD, and Ana Rosa Martins Cervellini, MD, MSc

Neurology® 2022;98:e561-e562. doi:10.1212/WNL.00000000000013020

Correspondence

Dr. Fabiani
giorgiofabiani@icloud.com

The lentiform fork sign (LFS) is an uncommon imaging finding. Accepted hypotheses include vasogenic edema and metabolic acidosis affecting the lentiform nuclei.^{1,2} MRI imaging in a 46-year-old woman undergoing regular hemodialysis showed 3 stages of the LFS over 9 months. Her initial neurologic examination revealed severe dystonia (Video 1). Laboratory testing revealed mild compensated metabolic acidosis with nearly normal bicarbonate and anion gap (Table). MRI sequence scans demonstrated symmetric hyperintensities of the BG and hyperintense rim delineating the lentiform (Figure). This case demonstrates that LFS can exist without metabolic acidosis. Vasogenic edema is considered a likely underlying mechanism.

Acknowledgment

Walter Oleschko Arruda, MD, PhD, for patient reading and last suggestions.

MORE ONLINE

Video

Teaching slides

<http://links.lww.com/WNL/B647>

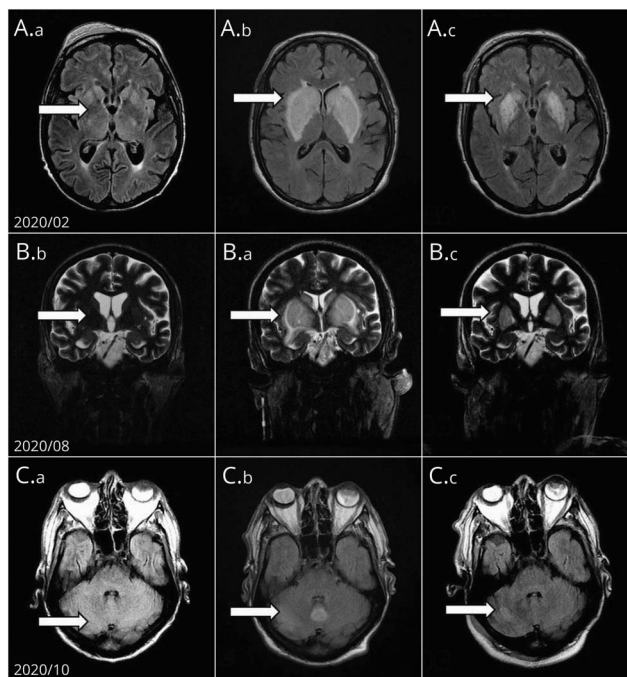
Table Central Laboratory Results

Laboratory	Timeline		
	2020/02	2020/08	2020/10
Glucose (mg/dL)	269	245	246
Sodium level (Na ⁺) (meq/L)	137, 0	129, 9	133, 3
K ⁺ (meq/L)	3, 7	6, 67	4, 91
ion Ca ⁺⁺ (mmol/L)	1, 11	1, 22	1, 17
Bicarb level (HCO ₃) (meq/L)	20, 4	19, 9	24, 7
Chloride level (Cl ⁻) (meq/L)	96	97	98
pH	7, 35	7, 398	7, 45
pO ₂ (mm Hg)	53, 1	66, 4	159, 5
pCO ₂ (mm Hg)	39.1	33	39, 8
BE (meq/L)	-5, 0	-4, 30	-0, 6
Anion gap (meq/L)	20.6	13	10, 6
Lactate (meq/L)	1, 2	5, 95	2, 65
Hgb (g/d)	9, 7	9, 6	11, 6
Hematocrit (%)	31, 5	28, 0	34, 0
Creatinine (mg/dL)	4, 93	7, 91	3, 79
Urea (mg/dL)	66	159	30

From the Department of Neurology (B.K., E.H., G.F., A.R.M.C.), Hospital Angelina Caron, CG do Sul; Department of Neurology (G.F.), CHC-UFPR—Hospital de Clinicas da UFPR, Curitiba, PR.

Go to Neurology.org/N for full disclosures.

Figure Brain MRI and the 3 Stages of LFS: 2020/02



Brain MRI axial T2- FLAIR and STIR-FSE A.a, B.a, C.a no evidence of the LFS; 2020/08—A.b, B.b, C.b bilateral, symmetric hyperintensities of the caudate, putamen, and thalamus, with the LFS, the hyperintense rim delineating the lentiform nucleus. (white arrowheads) and, 2020/10—A.c, B.c, C.c show an impressive reduction of the bilateral hyperintensities, and the LFS just vanished (white arrowheads).

Study Funding

The authors report no targeted funding.

Disclosure

The authors report no disclosures relevant to the manuscript. Go to [Neurology.org/N](https://www.neurology.org/N) for full disclosures.

Appendix Authors

Name	Location	Contribution
Bruna Kroeff, MD	Department of Neurology, Hospital Angelina Caron, CG do Sul	Drafting/revision of the manuscript for content, including medical writing for content, major role in the acquisition of data, study concept or design, and analysis or interpretation of data
Eduardo Hummelgen, MD	Department of Neurology, Hospital Angelina Caron, CG do Sul	Drafting/revision of the manuscript for content, including medical writing for content, and analysis or interpretation of data
Giorgio Fabiani, MD	Department of Neurology, Hospital Angelina Caron, CG do Sul; Department of Neurology, CHC-UFPR—Hospital de Clinicas da UFPR, Curitiba, PR	Drafting/revision of the manuscript for content, including medical writing for content, major role in the acquisition of data, study concept or design, and analysis or interpretation of data
Ana Rosa Martins Cervellini, MD, MSc	Department of Neurology, Hospital Angelina Caron, CG do Sul	Drafting/revision of the manuscript for content, including medical writing for content, major role in the acquisition of data, study concept or design, and analysis or interpretation of data

References

1. Hamed S, Mohamed K, Abd Elhameed S, et al. Movement disorders due to selective basal ganglia lesions with uremia. *Can J Neurol Sci.* 2020;47(3):350-365.
2. Fabiani G, Teive HA, Munhoz RP. Lentiform fork sign and fluctuating, reversible parkinsonism in a patient with uremic encephalopathy. *Mov Disord.* 2013;28(8):1053.

Neurology®

Teaching Video NeuroImage: Aurora and Dusk of the Lentiform Fork Sign in a Patient With Reversible Dystonia

Bruna Kroeff, Eduardo Hummelgen, Giorgio Fabiani, et al.
Neurology 2022;98:e561-e562 Published Online before print October 29, 2021
DOI 10.1212/WNL.0000000000013020

This information is current as of October 29, 2021

Updated Information & Services	including high resolution figures, can be found at: http://n.neurology.org/content/98/5/e561.full
References	This article cites 2 articles, 0 of which you can access for free at: http://n.neurology.org/content/98/5/e561.full#ref-list-1
Subspecialty Collections	This article, along with others on similar topics, appears in the following collection(s): Dystonia http://n.neurology.org/cgi/collection/dystonia Electrolyte http://n.neurology.org/cgi/collection/electrolyte MRI http://n.neurology.org/cgi/collection/mri Parkinson's disease/Parkinsonism http://n.neurology.org/cgi/collection/parkinsons_disease_parkinsonism
Permissions & Licensing	Information about reproducing this article in parts (figures, tables) or in its entirety can be found online at: http://www.neurology.org/about/about_the_journal#permissions
Reprints	Information about ordering reprints can be found online: http://n.neurology.org/subscribers/advertise

Neurology® is the official journal of the American Academy of Neurology. Published continuously since 1951, it is now a weekly with 48 issues per year. Copyright © 2021 American Academy of Neurology. All rights reserved. Print ISSN: 0028-3878. Online ISSN: 1526-632X.

