

# Effect of coexisting vascular disease on long-term risk of recurrent events after TIA or stroke

Marion Boulanger, MD, Linxin Li, MD, DPhil, Shane Lyons, MD, Nicola G. Lovett, MBBS, Magdalena M. Kubiak, MBBS, MRCP, MD, Louise Silver, DPhil, Emmanuel Touzé, MD, PhD, and Peter M. Rothwell, FMedSci, on behalf of the Oxford Vascular Study

*Neurology*® 2019;93:e695-e707. doi:10.1212/WNL.0000000000007935

## Correspondence

Prof. Rothwell  
peter.rothwell@  
ndcn.ox.ac.uk

## Abstract

### Objective

To determine whether patients with TIA or ischemic stroke with coexisting cardiovascular disease (i.e., history of coronary or peripheral artery disease) are still at high risk of recurrent ischemic events despite current secondary prevention guidelines.

### Methods

In a population-based study in Oxfordshire, UK (Oxford Vascular Study), we studied consecutive patients with TIA or ischemic stroke for 2002–2014. Patients were treated according to current secondary prevention guidelines and we determined risks of coronary events, recurrent ischemic stroke, and major bleeding stratified by the presence of coexisting cardiovascular disease.

### Results

Among 2,555 patients (9,148 patient-years of follow-up), those ( $n = 640$ ; 25.0%) with coexisting cardiovascular disease (449 coronary only; 103 peripheral only; 88 both) were at higher 10-year risk of coronary events than those without (22.8%, 95% confidence interval 17.4–27.9; vs 7.1%, 5.3–8.8;  $p < 0.001$ ; age- and sex-adjusted hazard ratio [HR] 3.07, 2.24–4.21) and of recurrent ischemic stroke (31.5%, 25.1–37.4; vs 23.4%, 20.5–26.2;  $p = 0.0049$ ; age- and sex-adjusted HR 1.23, 0.99–1.53), despite similar rates of use of antithrombotic and lipid-lowering medication. However, in patients with noncardioembolic TIA/stroke, risk of extracranial bleeds was also higher in those with coexisting cardiovascular disease, particularly in patients aged  $<75$  years (8.1%, 2.8–13.0; vs 3.4%, 1.6–5.3;  $p = 0.0050$ ; age- and sex-adjusted HR 2.71, 1.16–6.30), although risk of intracerebral hemorrhage was not increased (age- and sex-adjusted HR 0.36, 0.04–2.99).

### Conclusions

As in older studies, patients with TIA/stroke with coexisting cardiovascular disease remain at high risk of recurrent ischemic events despite current management. More intensive lipid-lowering might therefore be justified, but benefit from increased antithrombotic treatment might be offset by the higher risk of extracranial bleeding.

From the Centre for Prevention of Stroke and Dementia (M.B., L.L., S.L., N.G.L., M.M.K., L.S., P.M.R.), Nuffield Department of Clinical Neurosciences, John Radcliffe Hospital, University of Oxford, UK; and Service de Neurologie (M.B., E.T.), CHU Caen Normandie, UNICAEN, Normandie Université, INSERM U1237, Caen, France.

Go to [Neurology.org/N](https://www.neurology.org/N) for full disclosures. Funding information and disclosures deemed relevant by the authors, if any, are provided at the end of the article.

The Article Processing Charge was funded by Wellcome Trust.

OXVASC study coinvestigators are listed in appendix 2 at the end of the article.

This is an open access article distributed under the terms of the Creative Commons Attribution License 4.0 (CC BY), which permits unrestricted use, distribution, and reproduction in any medium, provided the original work is properly cited.

## Glossary

**DWI** = diffusion-weighted imaging; **HR** = hazard ratio; **LDL** = low-density lipoprotein; **MI** = myocardial infarction; **NSTEMI** = non-ST-elevation; **OXVASC** = Oxford Vascular Study; **PCSK-9** = proprotein convertase subtilisin/kexin type 9; **STEMI** = ST-elevation; **TOAST** = Trial of Org 10172 in Acute Stroke Treatment.

Risk of recurrent vascular events in patients with TIA and stroke remains substantial, and there is a need for improved secondary prevention of stroke and also prevention of coronary events.<sup>1,2</sup> Antiplatelet monotherapy is currently standard for long-term secondary prevention, and there is evidence in certain subsets of patients that anticoagulation is associated with a high risk of intracerebral hemorrhage.<sup>3,4</sup> Patients with TIA/stroke with coexisting stable atherosclerotic cardiovascular disease (coronary or peripheral artery disease) have been shown previously to be at high absolute risk of recurrent stroke and coronary events.<sup>5–7</sup> However, the absolute risk of coronary events after TIA/stroke has decreased over the last few decades,<sup>2</sup> and there are relatively few recent data on the overall residual vascular risk in patients with TIA/stroke on current guideline-based management, particularly on long-term follow-up. Moreover, data on the long-term risk of major bleeding with antithrombotic therapies based on the presence of coexisting cardiovascular disease are scarce. If TIA/stroke patients with coexisting stable atherosclerotic cardiovascular disease still have a high absolute risk of recurrent ischemic stroke or coronary events, then more intensive secondary prevention might result in a sufficient reduction in ischemic events to counterbalance any increased risk of bleeding or increased cost of more intensive treatment.

In patients with stable atherosclerotic cardiovascular disease, the COMPASS trial reported a 50% relative reduction in risk of ischemic stroke on rivaroxaban plus aspirin vs aspirin alone, albeit with a 70% increased risk of major bleeding.<sup>8</sup> COMPASS excluded patients with recent TIA or stroke, but the subgroup of patients with carotid artery disease did benefit from combination treatment.<sup>9</sup> Moreover, the annual risk of stroke was <1% in the aspirin-alone group, which is lower than reported after TIA and ischemic stroke in routine practice,<sup>10</sup> particularly in patients with coexisting coronary or peripheral artery disease.<sup>6</sup> In patients with recent cryptogenic stroke, the NAVIGATE ESUS trial reported no reduction in risk of recurrent ischemic stroke on rivaroxaban vs aspirin, but a higher risk of intracerebral hemorrhage.<sup>3</sup> However, cryptogenic patients with TIA/stroke have a low prevalence of coexisting cardiovascular disease, have a relatively low absolute risk of recurrent ischemic stroke,<sup>11</sup> and may be at higher risk of intracerebral hemorrhage.<sup>12–14</sup>

Patients with TIA and ischemic stroke also have a substantial long-term risk of myocardial infarction (MI) and cardiac death,<sup>15</sup> and there is also increasing evidence that tighter control of cholesterol levels than the current guideline target (low-density lipoprotein [LDL] <2.6 mmol/L) may be

necessary,<sup>16</sup> with randomized controlled trials of LDL reduction to <1.8 mmol/L ongoing.<sup>17</sup> Trials of new cholesterol-lowering therapies, proprotein convertase subtilisin/kexin type 9 (PCSK-9) inhibitors,<sup>18–20</sup> also focused on populations with stable cardiovascular disease and reported significant reductions in LDL cholesterol and in MI, as compared with placebo, in patients on high-dose statins with LDL level >1.8 mmol/L. There was less evidence for a reduction in risk of ischemic stroke with PCSK-9 inhibitors,<sup>19,20</sup> but dyslipidemia is estimated to account for a higher proportion of the risk of coronary events than of the risk of ischemic stroke.<sup>21,22</sup> However, although PCSK-9 inhibitors reduced the relative risk of MI by 27% in the Further Cardiovascular Outcomes Research With PCSK9 Inhibition in Subjects With Elevated Risk (FOURIER) trial<sup>19</sup> and by 13% in the Randomized Evaluation of the Effects of Anacetrapib Through Lipid-modification (REVEAL) trial,<sup>20</sup> the drugs are very costly<sup>23</sup> and may only be cost-effective in high-risk subgroups. The annual risk of MI was only 1%–2% in the trials, which is again lower than reported after TIA and ischemic stroke in patients with coexisting coronary or peripheral artery disease.<sup>6</sup>

Given the potential that more intensive antithrombotic treatment or lipid-lowering might reduce the long-term risk of recurrent stroke and coronary events in patients with TIA or stroke with coexisting stable cardiovascular disease, we aimed to determine the prognosis of this subgroup on current standard preventive treatment for both recurrent ischemic events and for major bleeding. Up-to-date estimates of event rates will help clinicians assess potential benefits of more intensive treatment and facilitate the planning of future trials.

## Methods

### Study population

The Oxford Vascular Study (OXVASC) is an ongoing population-based study of the incidence and outcome of all acute vascular events.<sup>24</sup> The study population comprised all 92,728 individuals, irrespective of age, registered with 100 family physicians in 9 general practices in Oxfordshire, UK. In Oxfordshire, it is estimated that 97.1% of the true residential population is registered with a primary care practice, the majority of nonregistered individuals being young adults. The analysis reported here included consecutive cases, irrespective of age, with a first TIA or ischemic stroke from April 1, 2002, to March 31, 2014, with follow-up until September 30, 2014. Information on major extracranial bleeds was only available in cases recruited from April 1, 2002, to March 31, 2012, with follow-up until March 31, 2013.

The OXVASC study design has been described in detail previously.<sup>24</sup> Briefly, multiple overlapping methods of hot and cold pursuit were used to achieve near complete ascertainment of all individuals with TIA or stroke.<sup>25,26</sup> These include the following: (1) a daily, rapid access TIA and stroke clinic to which participating general practitioners and the local emergency department refer individuals with suspected TIA or minor stroke; (2) daily searches of admissions to the medical, stroke, neurology, and other relevant wards; (3) daily searches of the local emergency department attendance register; (4) daily searches of in-hospital death records via the Bereavement Office; (5) monthly searches of all death certificates and coroner's reports for out-of-hospital deaths; (6) monthly searches of general practitioner diagnostic coding and hospital discharge codes; (7) monthly searches of all brain and vascular imaging referrals. Patients gave written informed consent after an event or assent was obtained from a relative for patients who were unable to provide consent. OXVASC was approved by our local research ethics committee.

Standard WHO definitions were used for TIA and stroke, which have been reported previously.<sup>24,25</sup> All cases were investigated according to current guidelines and reviewed by a senior neurologist with stroke expertise (P.M.R.) in order to ensure consistency over time. Differentiation between TIA and stroke was based on the WHO 24-hour cutoff for symptom duration (i.e., events were classified as TIA even if diffusion-weighted imaging [DWI] was positive if symptoms resolved within 24 hours) and we have kept the same definition over time. TIA/stroke etiology was categorized by P.M.R. according to the modified Trial of Org 10172 in Acute Stroke Treatment (TOAST) criteria (table e-1, doi.org/10.5061/dryad.t4r1n64).<sup>27</sup> Patients were prescribed standard secondary prevention medication according to contemporary guidelines, including antiplatelet or anticoagulant treatment, as appropriate, blood pressure-lowering medication, and statin treatment to achieve a target of blood pressure <140/90 mm Hg and LDL <2.6 mmol/L, both at baseline and at the time of study follow-up visits. It was our policy in patients with coexisting cardiovascular disease who were on antiplatelet treatment before the TIA/stroke to continue dual therapy if already on dual (e.g., after recent stent) for as long as previously indicated and to add clopidogrel for 1 month only if on monotherapy beforehand, but revert to monotherapy after 1 month. Anticoagulation was also continued or started when clinically indicated, but was not used preferentially in patients with coexisting cardiovascular disease.

Demographic data, atherosclerotic risk factors (male sex, history of hypertension, diabetes mellitus, hypercholesterolemia, smoking [i.e., ex or current smoker], family history of premature MI [defined as MI occurring in a first-degree relative, siblings, or parents, aged ≤55 years if male or aged ≤65 years if female]), previous atrial fibrillation, prior coronary artery disease, prior peripheral artery disease, and

medication were collected from face-to-face interviews and cross-referenced with primary care records. Renal insufficiency was defined as glomerular filtration rate <30 mL/min, calculated by the MDRD equation,<sup>28</sup> using the creatinine level closest to the date of TIA/stroke. Patients were classified as having a prior coronary artery disease if they had at least one of the following: previous MI, unstable angina, angina, previous percutaneous coronary intervention, or coronary artery bypass graft surgery. Prior peripheral artery disease was defined as having at least one of the following: previous acute limb ischemia, critical limb ischemia, intermittent claudication, previous angioplasty or stenting, peripheral arterial bypass graft, or amputation. For intermittent claudication, the diagnosis was based on the judgement of the study clinician based on both prior medical records and symptoms.

All patients were followed up face-to-face at 1, 6, 12, 60, and 120 months by a study nurse or physician and subsequent vascular events identified and risk factor control evaluated and treatment revised as necessary. For patients who had moved out of the study area, telephone follow-up was done, and patients with dementia were followed up via a carer or by assessment in a nursing home. All recurrent events that presented to medical attention would also be identified by ongoing daily case ascertainment of all acute vascular events in the study population. All study patients were also notified to the UK Office of National Statistics such that all deaths were reported back to the study with causes. Deaths were also identified by regular review of primary care records and by regular contact with the Coroner's Office to ascertain out-of-hospital deaths. If a recurrent nonfatal vascular event was suspected, the patient was reassessed face-to-face by a study physician.

MI was defined using standard criteria.<sup>29</sup> Sudden cardiac death was defined using recommendations in Epidemiology and Clinical Research Studies and required a definite history of preceding symptoms consistent with acute coronary ischemia, or postmortem evidence of either substantial coronary atherosclerosis or acute thrombosis, or a documented MI during the previous 28 days.<sup>30</sup> Fatal MI was defined as any death within 30 days of a documented MI. Definitions of MI and sudden cardiac death remained unchanged over the period. We collected information on MI subtype (ST-elevation [STEMI] and non-ST-elevation MI [N-STEMI]). Recurrent ischemic stroke was defined as new neurologic deficit fitting the definition for ischemic stroke occurring after a period of neurologic stability or improvement. Major bleeds were defined according to the Clopidogrel in Unstable Angina to Prevent Recurrent Events (CURE) criteria and were bleeds that were fatal or substantially disabling with persistent sequelae, symptomatic intracranial, intraocular bleeds leading to significant loss of vision, or bleeds requiring transfusion of ≥2 units of blood, use of IV inotropic agents, or necessitating a surgical intervention (appendix e-1, doi.org/10.5061/dryad.t4r1n64).<sup>31</sup>

## Statistical analysis

We determined the 10-year risk of follow-up coronary events (defined as MI or sudden cardiac deaths), recurrent ischemic stroke, major ischemic vascular events (defined as coronary event or recurrent ischemic stroke, whichever happens first), and major bleeds (extracranial and intracerebral hemorrhage) from Kaplan-Meier analyses, stratified by history of coexisting cardiovascular disease, and assessed any difference with log-rank test. We used similar analyses for the 10-year risk stratified by stroke subtype. We also compared risks of follow-up events between patients with and without coexisting cardiovascular disease using logistic regression analysis adjusted for age and sex. All analyses were done using R version 3.1.3.

## Data availability

Requests for anonymized data will be considered by the corresponding author.

## Results

Of 2,555 patients (949 TIA and 1,606 ischemic stroke; mean age 74 years; 21% aged  $\geq 85$  years), 443 (17.3%) had a previous TIA or stroke before their index event and 640 (25.0%) had history of coexisting stable cardiovascular disease (449 coronary artery disease only; 103 peripheral artery disease only; 88 both [tables 1 and 2]). At baseline, the mean total cholesterol level was 5.05 ( $\pm 1.27$ ) mmol/L, ranging from 4.86 ( $\pm 1.30$ ) mmol/L in patients on statin treatment prior to the TIA/stroke to 5.12 ( $\pm 1.25$ ) mmol/L in those with no statin ( $p < 0.001$ ).

Patients with coexisting cardiovascular disease were older (mean age 78 vs 73 years,  $p < 0.001$ ), had more atherosclerotic risk factors, and were more likely to be on antithrombotics, antihypertensives, and statins before the TIA/stroke than those without (table 1 and table e-2, doi.org/10.5061/dryad.t4r1n64). Rates of use of secondary preventive therapies were high at 1-year follow-up, with similar rates of use of antithrombotics and statins in patients with and without coexisting cardiovascular disease, but rate of use of antihypertensives remained higher in those with coexisting cardiovascular disease (table 1 and table e-2, doi.org/10.5061/dryad.t4r1n64). Patients with TIA/stroke due to large artery disease (TOAST classification) and cardioembolism had the highest prevalence of coexisting cardiovascular disease ( $p < 0.001$ , table 2).

During 9,148 patient-years of follow-up, there were 158 coronary events (29 STEMI; 89 N-STEMI; 40 sudden cardiac deaths), 413 recurrent ischemic strokes, and 1,118 deaths. Patients with coexisting cardiovascular disease comprised 25% of all patients but accounted for 51% of coronary events and 28% of recurrent ischemic stroke during follow-up. In patients with noncardioembolic TIA/ischemic stroke and after exclusion of those on anticoagulants, 82 extracranial bleeds and 20 intracerebral hemorrhages occurred.

The 10-year risk of coronary events (10.6%, 95% confidence interval 8.8–12.4 overall) was higher in patients with coexisting cardiovascular disease than in those without (22.8%, 17.4–27.9; vs 7.1%, 5.3–8.8;  $p < 0.001$ ; age- and sex-adjusted hazard ratio [HR] 3.07, 2.24–4.21, table 3, figure 1, and figures e-1 and e-2, doi.org/10.5061/dryad.t4r1n64), particularly in patients aged  $< 75$  years (16.69%, 9.65–23.19; vs 3.78%, 2.09–5.44;  $p < 0.001$ ; age- and sex-adjusted HR 4.33, 2.42–7.73, table 3).

The 10-year risk of recurrent ischemic stroke (25.3%, 22.6–27.8 overall) was also higher in patients with coexisting cardiovascular disease than those without (31.5%, 25.1–37.4; vs 23.4%, 20.5–26.3;  $p = 0.0049$ ; age- and sex-adjusted HR 1.23, 0.99–1.53, table 3, figure 1, and figure e-3, doi.org/10.5061/dryad.t4r1n64), particularly in patients aged  $< 75$  years (30.3%, 21.4–38.3; vs 17.6%, 14.3–20.7;  $p < 0.001$ ; adjusted HR 1.74, 1.23–2.46, table 3). Patients with coexisting cardiovascular disease also had a higher 10-year risk of all major ischemic vascular events than those without (45.1%, 38.4–51.1; vs 28.7%, 25.3–31.9;  $p < 0.001$ ; age- and sex-adjusted HR 1.56, 1.30–1.88, table 3, figure 1).

In patients with noncardioembolic TIA/stroke and after exclusion of those on anticoagulants, the 10-year risk of major extracranial bleeds was higher in those with coexisting cardiovascular disease (table 3), particularly in patients aged  $< 75$  years (8.1%, 2.8–13.0; vs 3.5%, 1.6–5.3;  $p = 0.0050$ ; age- and sex-adjusted HR 2.71, 1.16–6.30). The excess risk of major extracranial bleeds in those with coexisting cardiovascular disease was not limited only to the very early follow-up period (figure 1). In contrast, patients with coexisting cardiovascular disease were not at increased risk of intracerebral hemorrhage (1.5%, 0–4.3; vs 2.5%, 1.0–4.0;  $p = 0.09$ ; age- and sex-adjusted HR 0.17, 0.02–1.26, table 3).

The subgroup of patients with (TOAST) large artery disease had the highest 10-year risk of coronary events compared to the other stroke subtypes (16.1%, 10.3–21.6,  $p < 0.001$ ) and among the highest 10-year risk of recurrent ischemic stroke (26.3%, 18.9–33.1,  $p < 0.001$ , table 4, figure 2). However, in patients with (TOAST) large artery disease, risk of coronary events remained increased in those with coexisting cardiovascular disease compared to those without (10-year risk 33.5%, 15.9–47.4; vs 9.5%, 4.2–14.6;  $p < 0.001$ ; age- and sex-adjusted HR 3.39, 1.65–6.96) while risk of recurrent ischemic stroke was high irrespective of presence of coexisting cardiovascular disease (10-year risk 26.4%, 12.6–38.1; vs 26.3%, 17.3–34.4;  $p = 0.79$ ; age- and sex-adjusted HR 1.02, 0.57–1.83, figure 3 and table e-3, doi.org/10.5061/dryad.t4r1n64). Patients with (TOAST) large artery disease also had a high 10-year risk of major extracranial bleeds (11.1%, 1.8–19.5,  $p = 0.85$ ) but a relatively low risk of intracerebral hemorrhage (0.4%, 0.0–1.1,  $p = 0.26$ , table 4 and table e-3, doi.org/10.5061/dryad.t4r1n64). In contrast, the subgroup of patients with

**Table 1** Baseline characteristics in patients with TIA or ischemic stroke, stratified by history of coexisting cardiovascular disease

Baseline characteristics	Total (n = 2,555)	Coexisting cardiovascular disease		p Value
		Yes (n = 640)	No (n = 1915)	
<b>Demographics</b>				
Mean age (SD), y	73.9 (13.0)	78.0 (10.0)	72.6 (13.6)	<0.001
Age ≥75 years	1,404 (55.0)	444 (69.4)	960 (50.1)	<0.001
Men	1,262 (49.4)	354 (55.3)	908 (47.4)	<0.001
<b>Prior comorbidities</b>				
Previous TIA	231 (9.0)	93 (14.5)	138 (7.2)	<0.001
Previous stroke	264 (10.3)	95 (14.8)	169 (8.8)	<0.001
Atrial fibrillation	522 (20.4)	204 (31.9)	318 (16.6)	<0.001
Hypertension	1,537 (60.1)	492 (76.9)	1,045 (54.6)	<0.001
Diabetes mellitus	357 (14.0)	156 (24.4)	201 (10.5)	<0.001
Hypercholesterolemia	782 (30.6)	334 (52.2)	448 (23.4)	<0.001
History of smoking <sup>a</sup>	1,416 (55.4)	403 (63.0)	1,013 (52.9)	<0.001
Current smoker <sup>a</sup>	361 (14.1)	64 (10.0)	297 (15.5)	<0.001
Family history of premature myocardial infarction <sup>b</sup>	224 (8.8)	86 (16.5)	138 (8.9)	<0.001
Renal insufficiency <sup>c</sup>	132 (5.2)	56 (8.8)	76 (4.0)	<0.001
<b>TIA/stroke subtypes (TOAST classification)</b>				
Large artery disease	280 (11.0)	85 (13.3)	195 (10.2)	0.03
Cardioembolic	669 (26.2)	226 (35.3)	443 (23.1)	<0.001
Small vessel disease	317 (12.4)	48 (7.5)	269 (14.0)	<0.001
Cryptogenic	811 (31.7)	140 (21.9)	671 (35.0)	<0.001
More than one cause	90 (3.5)	45 (7.0)	45 (2.3)	<0.001
Unknown	331 (13.0)	88 (13.8)	242 (12.6)	0.47
Other causes	57 (2.2)	8 (1.3)	49 (2.6)	0.05
<b>Baseline therapies</b>				
Antithrombotics	1,100 (43.1)	496 (77.5)	603 (31.5)	<0.001
Antihypertensives	1,486 (58.2)	530 (82.8)	956 (49.9)	<0.001
Statins	684 (26.8)	358 (55.9)	326 (17.0)	<0.001
<b>Secondary prevention medication at 1-month follow-up<sup>d</sup></b>				
Antithrombotics	n = 2,339	n = 559	n = 1,780	
Antithrombotics	2,196 (93.9)	522 (93.4)	1,673 (94.0)	0.60
Antihypertensives	1,771 (75.7)	482 (86.2)	1,288 (72.4)	<0.001
Statins	1,755 (75.0)	451 (80.7)	1,304 (73.3)	<0.001
<b>Secondary prevention medication at 1-year follow-up<sup>d</sup></b>				
Antithrombotics	n = 1,976	n = 458	n = 1,518	
Antithrombotics	1,884 (95.3)	437 (95.4)	1,447 (95.3)	0.85
Antihypertensives	1,572 (79.6)	398 (86.9)	1,174 (77.3)	<0.001

Continued

**Table 1** Baseline characteristics in patients with TIA or ischemic stroke, stratified by history of coexisting cardiovascular disease (continued)

Baseline characteristics	Total (n = 2,555)	Coexisting cardiovascular disease		p Value
		Yes (n = 640)	No (n = 1915)	
Statins	1,589 (80.4)	370 (80.8)	1,219 (80.3)	0.87

Abbreviation: TOAST = Trial of Org 10172 in Acute Stroke Treatment.

Data are n (%), unless otherwise specified. *p* For comparison between patients with and without coexisting cardiovascular disease ( $\chi^2$  test for categorical variables and *t* test for continuous variable).

<sup>a</sup> Data missing for 7 patients.

<sup>b</sup> Data missing for 476 patients.

<sup>c</sup> Data missing for 13 patients.

<sup>d</sup> Patients who died before the follow-up were not included.

cryptogenic stroke had the lowest 10-year risk of recurrent ischemic stroke (19.5%, 15.6–23.3, *p* < 0.001) and of coronary events compared to the other stroke subtypes (8.3%,

5.4–11.1, table 4, figure 2), but a relatively high 10-year risk of intracerebral hemorrhage (2.5%, 0.76–4.2, *p* = 0.26, table 4).

**Table 2** Baseline characteristics in patients with TIA or ischemic stroke, stratified by TIA/stroke subtypes (Trial of Org 10172 in Acute Stroke Treatment [TOAST] classification)

Baseline characteristics	Large artery disease (n = 280)	Cardioembolic (n = 669)	Small vessel disease (n = 317)	Cryptogenic (n = 811)	p Value
<b>Demographics</b>					
Mean (SD) age, y	73.3 (10.3)	77.9 (11.9)	69.7 (12.6)	70.3 (12.8)	<0.001
Age ≥75 years	137 (48.9)	469 (70.1)	121 (38.2)	346 (42.7)	<0.001
Men	172 (61.4)	306 (45.7)	182 (57.4)	402 (49.6)	<0.001
<b>Prior comorbidities</b>					
Coexisting cardiovascular disease	85 (30.6)	226 (33.8)	48 (15.1)	140 (17.3)	<0.001
Hypertension	198 (70.7)	454 (67.9)	183 (57.7)	419 (51.7)	<0.001
Diabetes mellitus	52 (18.6)	81 (12.1)	51 (16.1)	99 (12.2)	0.0172
Hypercholesterolemia	121 (43.2)	205 (30.6)	94 (29.7)	228 (28.1)	<0.001
History of smoking	183 (65.3)	348 (52.0)	197 (62.1)	443 (54.6)	<0.001
<b>Baseline therapies</b>					
Antithrombotics	106 (37.9)	427 (63.8)	101 (31.9)	273 (33.7)	<0.001
Antihypertensives	187 (66.8)	482 (72.0)	151 (47.6)	394 (48.6)	<0.001
Statins	102 (36.4)	191 (28.6)	70 (22.1)	205 (25.3)	0.03
<b>Secondary prevention medication at 1-month follow-up<sup>a</sup></b>					
Antithrombotics	263 (96.3)	520 (93.5)	307 (96.8)	769 (95.2)	0.22
Antihypertensives	224 (82.1)	446 (80.2)	258 (81.4)	589 (72.9)	<0.001
Statins	232 (85.0)	380 (68.3)	266 (83.9)	649 (80.3)	<0.001
<b>Secondary prevention medication at 1-year follow-up<sup>a</sup></b>					
Antithrombotics	239 (96.8)	411 (94.3)	292 (94.2)	719 (94.0)	0.53
Antihypertensives	213 (86.2)	359 (82.3)	246 (79.4)	573 (74.9)	<0.001
Statins	221 (78.9)	315 (72.2)	256 (82.6)	627 (82.0)	0.0011

Data are number (%), unless otherwise specified. *p* For comparison among all stroke subtypes ( $\chi^2$  test for categorical variables and one-way analysis of variance test for continuous variable).

<sup>a</sup> Patients who died before the follow-up were not included.

**Table 3** Ten-year risk of coronary events, recurrent ischemic stroke, major ischemic vascular events, intracerebral hemorrhage, and major extracranial bleeds after TIA/ischemic stroke in patients with vs without coexisting cardiovascular disease, stratified by age

Coexisting cardiovascular disease	Events, n/N		10-year risk, % (95% CI)		p Value	Crude HR (95% CI)	Age- and sex-adjusted HR (95% CI)	p Value
	Yes	No	Yes	No				
<b>All patients</b>								
Coronary events	80/640	78/1,915	22.83 (17.40–27.91)	7.06 (5.30–8.79)	<0.001	3.83 (2.81–5.21)	3.07 (2.24–4.21)	<0.001
Recurrent ischemic stroke	118/640	295/1,915	31.51 (25.10–37.37)	23.43 (20.49–26.25)	0.0049	1.36 (1.10–1.68)	1.23 (0.99–1.53)	0.06
Major ischemic vascular events	175/640	345/640	45.12 (38.44–51.07)	28.65 (25.28–31.86)	<0.001	1.76 (1.47–2.11)	1.56 (1.30–1.88)	<0.001
Intracerebral hemorrhage <sup>a</sup>	1/414	19/1,472	1.47 (0.00–4.29)	2.49 (0.97–3.99)	0.09	0.21 (0.03–1.54)	0.17 (0.02–1.26)	0.08
Major extracranial bleeds <sup>a</sup>	27/351	55/1,226	11.14 (6.56–15.50)	7.44 (5.09–9.74)	0.0050	1.91 (1.21–3.03)	1.58 (0.99–2.52)	0.06
<b>Age &lt;75 years</b>								
Coronary events	23/196	23/955	16.69 (9.65–23.19)	3.78 (2.09–5.44)	<0.001	5.38 (3.06–9.48)	4.33 (2.42–7.73)	<0.001
Recurrent ischemic stroke	44/196	127/955	30.34 (21.43–38.25)	17.61 (14.34–20.74)	<0.001	1.87 (1.33–2.62)	1.74 (1.23–2.46)	0.0012
Major ischemic vascular events	59/196	141/955	39.68 (30.39–47.73)	20.96 (17.11–24.62)	<0.001	2.28 (1.69–3.09)	2.10 (1.54–2.87)	<0.001
Intracerebral hemorrhage <sup>a</sup>	1/150	8/801	2.27 (0.00–6.58)	2.23 (0.31–4.12)	0.66	0.63 (0.08–5.03)	0.36 (0.04–2.99)	0.41
Major extracranial bleeds <sup>a</sup>	9/126	16/653	8.07 (2.81–13.04)	3.45 (1.61–5.26)	0.0050	3.04 (1.34–6.88)	2.71 (1.16–6.30)	0.0209
<b>Age ≥75 years</b>								
Coronary events	57/444	55/960	27.99 (19.05–35.94)	12.44 (8.38–16.31)	<0.001	2.64 (1.83–3.82)	2.59 (1.79–3.77)	<0.001
Recurrent ischemic stroke	74/444	168/960	33.81 (23.47–42.76)	32.19 (26.42–37.51)	0.89	1.02 (0.78–1.34)	1.05 (0.80–1.38)	0.79
Major ischemic vascular events	116/444	204/960	50.66 (39.87–59.51)	39.69 (33.37–45.41)	0.0096	1.35 (1.08–1.70)	1.37 (1.09–1.73)	0.0063
Intracerebral hemorrhage <sup>a</sup>	0/264	11/671	0	2.49 (0.76–4.20)	0.0443	0.01 (0.00–100)	0.01 (0.00–100)	0.59
Major extracranial bleeds <sup>a</sup>	18/225	39/573	19.21 (3.88–32.10)	14.15 (8.01–19.87)	0.34	1.31 (0.75–2.29)	1.28 (0.73–2.56)	0.39

Abbreviations: CI = confidence interval; HR = hazard ratio.

Major ischemic vascular event was a component of coronary event or recurrent ischemic stroke. Information on coronary events, recurrent ischemic stroke, and intracerebral hemorrhage was available in cases recruited from April 1, 2002, to March 31, 2014, with follow-up until September 30, 2014. Information on major extracranial bleeds was available in cases recruited from April 1, 2002, to March 31, 2012, with follow-up until March 31, 2013.

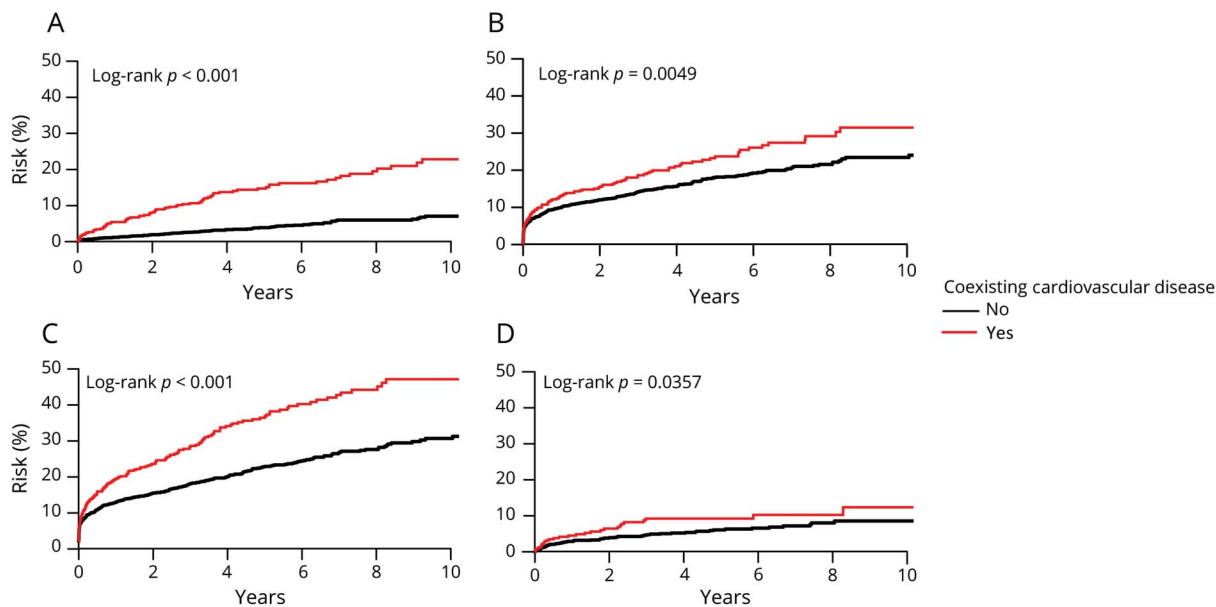
<sup>a</sup> Patients with cardioembolic TIA/ischemic stroke and those on anticoagulants were excluded.

## Discussion

In this population-based cohort of consecutive TIA/stroke patients on current standard management, those with coexisting cardiovascular disease were at significantly higher 10-year risk of coronary events and recurrent ischemic stroke than those without, particularly at age <75 years (16.7% vs 3.8% and 30.3% vs 17.6%, respectively). However, in younger patients with noncardioembolic TIA/

stroke (i.e., on antiplatelet therapy for secondary prevention), 10-year risk of major extracranial bleeds was also higher in those with coexisting cardiovascular disease (8.1% vs 3.5%), although there was no increased risk of intracerebral hemorrhage. More intensive lipid-lowering therefore might be justified in patients with coexisting cardiovascular disease, although economic evaluation of PCSK9 inhibitors in addition to statin therapy in similar patient populations suggests that treatment might still exceed the generally accepted cost-effectiveness

**Figure 1** Risks of coronary events, recurrent ischemic stroke, major ischemic vascular events, and major bleeds after TIA or ischemic stroke, stratified by history of coexisting cardiovascular disease



(A) Coronary events. (B) Recurrent ischemic stroke. (C) Major ischemic vascular events. (D) Major bleeds. Major ischemic vascular event was a component of coronary event or recurrent ischemic stroke. Risk of major bleeds was calculated in noncardioembolic patients with TIA or ischemic stroke and after exclusion of those on anticoagulants.

threshold,<sup>32</sup> and there is probably still potential for more intensive treatment with statins and other lipid-lowering drugs. Benefit from increased antithrombotic treatment might be offset by the higher risk of extracranial bleeding, particularly in older patients, in whom bleeds are more likely to be disabling or fatal.<sup>33</sup>

We found that the subgroup of patients with large artery disease (TOAST classification) were at high risk of ischemic events, consistent with previous findings.<sup>34,35</sup> However, the current absolute risk of ischemic events (10-year risk of coronary events of 16.1% and 10-year risk of recurrent ischemic stroke of 26.3%) was lower than previously reported (10-year

**Table 4** Ten-year risk of coronary events, recurrent ischemic stroke, major ischemic vascular events, intracerebral hemorrhage, and major extracranial bleeds after TIA or ischemic stroke, stratified by stroke subtype

	Large artery disease (n = 280)		Cardioembolic (n = 669)		Small vessel disease (n = 317)		Cryptogenic (n = 811)		p Value
	n	% (95% CI)	n	% (95% CI)	n	% (95% CI)	n	% (95% CI)	
<b>Coronary events</b>	40	16.13 (10.28–21.60)	37	11.19 (6.91–15.27)	19	7.87 (4.22–11.38)	41	8.29 (5.38–11.11)	<0.001
<b>Recurrent ischemic stroke</b>	54	26.34 (18.89–33.11)	114	31.91 (24.76–38.38)	64	25.91 (19.47–31.84)	111	19.50 (15.57–23.25)	<0.001
<b>Major ischemic vascular events</b>	71	36.73 (28.18–44.26)	140	39.02 (31.35–45.84)	78	31.58 (24.82–37.74)	139	25.70 (20.87–30.23)	<0.001
<b>Intracerebral hemorrhage<sup>a</sup></b>	1	0.37 (0.00–1.09)	NA	NA	2	1.90 (0.00–4.85)	11	2.50 (0.76–4.21)	0.26
<b>Major extracranial bleeds<sup>a</sup></b>	11	11.09 (1.84–19.48)	NA	NA	16	7.65 (3.57–11.56)	31	7.31 (4.27–10.27)	0.85

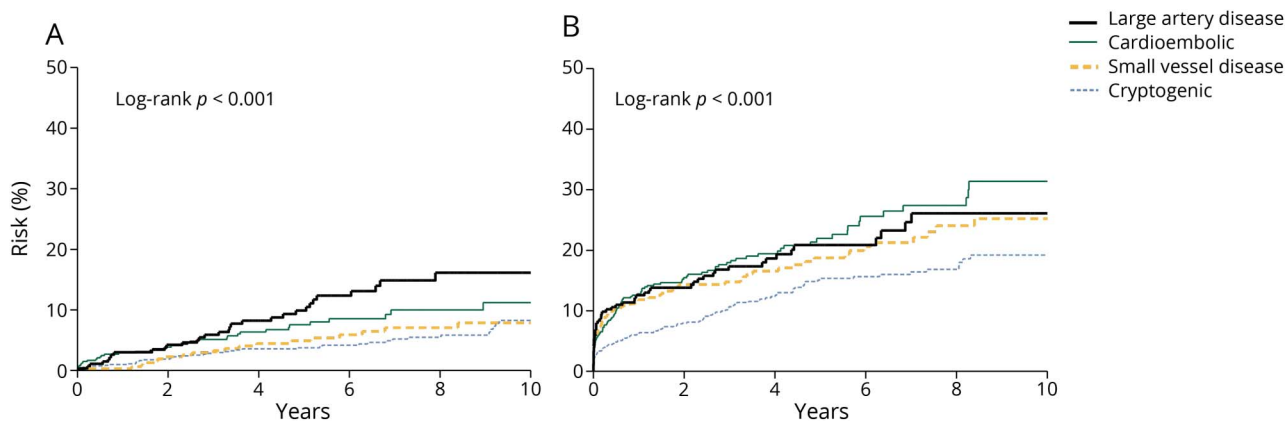
Abbreviation: CI = confidence interval.

p Values are log-rank values. Major ischemic vascular event was a composite of recurrent ischemic stroke or coronary event. Information on coronary events, recurrent ischemic stroke, and intracerebral hemorrhage was available in cases recruited from April 1, 2002, to March 31, 2014, with follow-up until September 30, 2014. Information on major extracranial bleeds was available in cases recruited from April 1, 2002, to March 31, 2012, with follow-up until March 31, 2013, including 235 patients with large artery disease, 277 with small vessel disease, and 669 with cryptogenic TIA/stroke.

<sup>a</sup> Patients with cardioembolic TIA/ischemic stroke and those on anticoagulants were excluded.



**Figure 2** Risks of coronary events and recurrent ischemic stroke after TIA or ischemic stroke, stratified by stroke subtype (Trial of Org 10172 in Acute Stroke Treatment [TOAST] classification)

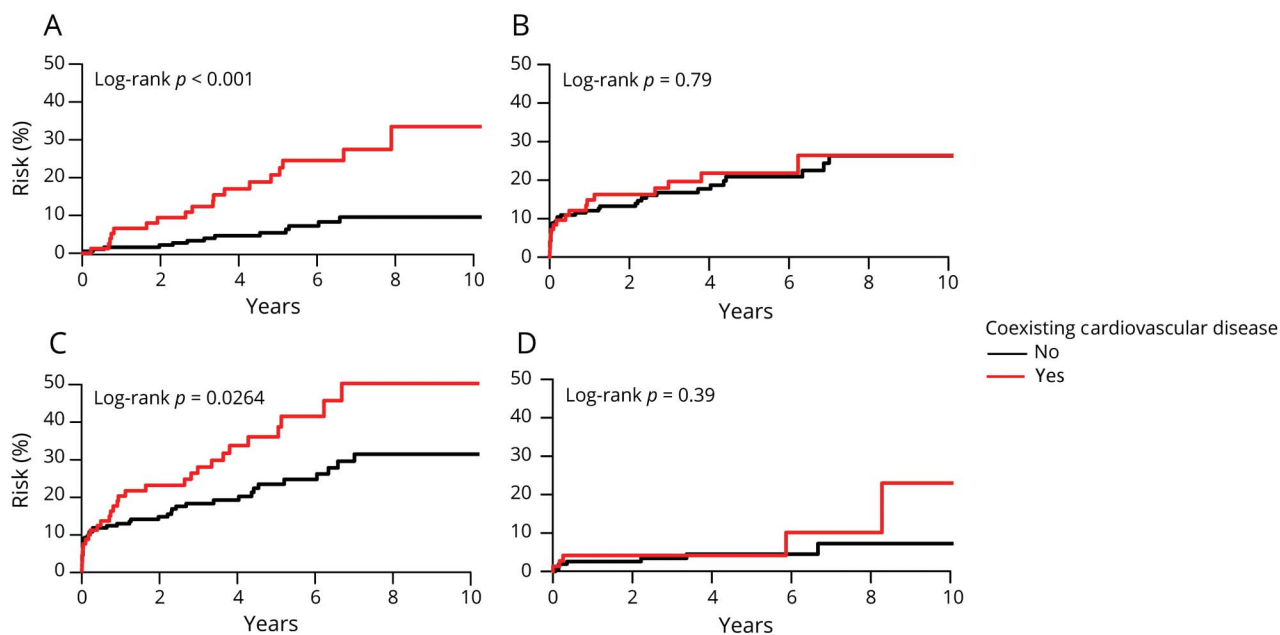


(A) Coronary events. (B) Recurrent ischemic stroke.

risk >20% and >30%, respectively).<sup>34,35</sup> We also found that stratification by presence of coexisting cardiovascular disease identified individuals at higher risk of coronary events, with 10-year risk ranging from 9.5% in patients without coexisting cardiovascular disease to 33.5% in those with. The suggestion that carotid stenosis should be considered as a coronary heart disease equivalent (defined as 10-year risk  $\geq 20\%$ )<sup>36</sup><sup>37</sup> was based mainly on data from trials of endarterectomy performed in the 1980s and early 1990s, which reported risks of coronary

events of more than 20% over 10 years.<sup>34,35</sup> The risk of MI after TIA/stroke has declined over time,<sup>2</sup> but only one recent study reported the risk in patients with TIA/stroke due to large artery disease, with an annual risk of 0.8%,<sup>38</sup> although prevalence of coronary artery disease was lower (11%) than in our cohort (30%) and mean follow-up was only 2.1 years. We found that most coronary events occurred in the subset of patients with large artery disease who had prior coexisting cardiovascular disease.

**Figure 3** Risks of coronary events, recurrent ischemic stroke, major ischemic vascular events, and major bleeds after TIA or ischemic stroke due to large artery disease (Trial of Org 10172 in Acute Stroke Treatment [TOAST] classification), stratified by history of coexisting cardiovascular disease



(A) Coronary events. (B) Recurrent ischemic stroke. (C) Major ischemic vascular events. (D) Major bleeds. Major ischemic vascular event was a component of coronary event or recurrent ischemic stroke. Risk of major bleeds was calculated in noncardioembolic patients with TIA or ischemic stroke and after exclusion of those on anticoagulants.

We also found that patients with cryptogenic TIA/stroke, in whom the prevalence of coexisting cardiovascular disease was relatively low, had the lowest risk of coronary events or recurrent ischemic stroke, but a relatively high risk of intracerebral hemorrhage compared to the other non-cardioembolic subtypes. Patients with cryptogenic TIA/stroke were younger than those with other subtypes and had less hypertension and diabetes, which are known risk factors for intracerebral hemorrhage,<sup>21,39</sup> and their higher risk of intracerebral hemorrhage remains difficult to explain. Notwithstanding the results of ongoing trials of anticoagulation vs antiplatelet treatment in patients with cryptogenic stroke,<sup>40</sup> future trials on more intensive antithrombotic management might focus on subgroups of patients with TIA/stroke with a high risk of recurrent ischemic events and a lower risk of bleeding.

Hypertension is a strong predictor of intracerebral hemorrhage<sup>21</sup> and blood pressure management in patients with TIA/stroke significantly reduces the risk of intracerebral hemorrhage, with benefit increasing over time.<sup>41</sup> The prevalence of history of hypertension was higher in patients with coexisting cardiovascular disease than in those without and the rates of use of anti-hypertensives at both baseline and 1 year were also higher, which might at least partly explain the relatively low risk of intracerebral hemorrhage in patients with coexisting cardiovascular disease.

Although we consider our findings to be valid, our study has limitations. First, our population consisted of a predominantly white British population, which will limit generalizability. Second, rates of use of secondary prevention medication were high, but were not 100%. However, our population-based cohort includes many frail and very elderly patients, often with dementia, prior gastrointestinal bleeding, or terminal illness, and some patients refuse medication for other reasons. Nevertheless, rates of medication use at 1 month and 1 year were higher than in the majority of other similar cohorts,<sup>42–45</sup> and can be regarded as being based closely on current guidelines for secondary prevention. Third, although all hospital admissions for chest pain were reviewed, details were only collected for MI and we did not report information on angina pectoris. Indeed, data on angina are considered to be less reliable than those on MI because underdiagnosed angina is estimated to be common and not all patients with angina symptoms seek medical attention.<sup>46</sup> Finally, diagnosis of MI has evolved over the last 2 decades<sup>29,47</sup> and so our findings may not be fully generalizable to future clinical practice. Similarly, those centers that use a DWI-based definition of TIA vs ischemic stroke may obtain higher estimate of recurrent stroke risk.

Patients with TIA/ischemic stroke with coexisting cardiovascular disease have a high risk of recurrent ischemic events on current standard management. More intensive lipid-lowering therefore might be justified, but benefit from increased antithrombotic treatment might be offset by the higher risk of extracranial bleeding, particularly in older patients.

## Acknowledgment

The authors thank the staff in the general practices that collaborated in OXVASC: Abingdon Surgery; Malthouse Surgery, Abingdon; Marcham Road Family Health Centre, Abingdon; The Health Centre, Berinsfield; Key Medical Practice, Kidlington, Oxford; East Oxford Health Centre; and Church Street Practice, Wantage. The authors acknowledge the use of the facilities of the Acute Vascular Imaging Centre, Oxford, UK.

## Study funding

OXVASC is funded by the National Institute for Health Research (NIHR), Oxford Biomedical Research Centre, Wellcome Trust, Wolfson Foundation, and the British Heart Foundation. Professor Rothwell is in receipt of an NIHR Senior Investigator award. Dr. Boulanger was funded by SFNV–France AVC, Société Française de Neurologie–JNLF, Fondation Planiol pour l'Etude du Cerveau, and l'Institut Servier.

## Disclosure

The authors report no disclosures relevant to the manuscript. Go to [Neurology.org/N](http://Neurology.org/N) for full disclosures.

## Publication history

Received by *Neurology* October 4, 2018. Accepted in final form March 21, 2019.

## Appendix 1 Authors

Name	Location	Role	Contribution
<b>Marion Boulanger, MD</b>	Centre for Prevention of Stroke and Dementia, University of Oxford, UK; Normandie Université, UNICAEN, INSERM U1237, Caen, France	Author	Collected and analyzed the data, interpreted the results, drafted the manuscript for intellectual content
<b>Linxin Li, MD, DPhil</b>	Centre for Prevention of Stroke and Dementia, University of Oxford, UK	Author	Senior research fellow in the OXVASC study; collected the data
<b>Shane Lyons, MD</b>	Centre for Prevention of Stroke and Dementia, University of Oxford, UK	Author	Collected the data
<b>Nicola G. Lovett, MBBS</b>	Centre for Prevention of Stroke and Dementia, University of Oxford, UK	Author	Collected the data
<b>Magdalena M. Kubiak, MBBS, MRCP, MD</b>	Centre for Prevention of Stroke and Dementia, University of Oxford, UK	Author	Collected the data
<b>Louise Silver, DPhil</b>	Centre for Prevention of Stroke and Dementia, University of Oxford, UK	Author	Coordinated the OXVASC study; collected the data

## Appendix 1 (continued)

Name	Location	Role	Contribution
<b>Emmanuel Touzé, MD, PhD</b>	Normandie Université, UNICAEN, INSERM U1237, Caen, France	Author	Revised the manuscript for intellectual content
<b>Peter M. Rothwell, FMedSci</b>	Centre for Prevention of Stroke and Dementia, University of Oxford, UK	Author	Designed and conceptualized the study, interpreted the data, supervised funding and revised the manuscript for intellectual content, director of the OXVASC study

## Appendix 2 Coinvestigators of the OXVASC study

Name	Location	Role	Contribution
<b>Prof. Sarah Pendlebury, MD, DPhil</b>	Centre for Prevention of Stroke and Dementia, University of Oxford, UK	Senior research fellow	Involved in the follow-up of patients
<b>Wilhelm Kuker, MD</b>	Centre for Prevention of Stroke and Dementia, University of Oxford, UK	Neuroradiologist	Reviewed imaging
<b>Alastair Webb, MD, DPhil</b>	Centre for Prevention of Stroke and Dementia, University of Oxford, UK	Senior research fellow	Involved in the follow-up of patients
<b>Sara Mazzucco, MD, PhD</b>	Centre for Prevention of Stroke and Dementia, University of Oxford, UK	Senior research fellow	Involved in the follow-up of patients
<b>Gabriel Yiin, MD, DPhil</b>	Centre for Prevention of Stroke and Dementia, University of Oxford, UK	Senior research fellow	Involved in the follow-up of patients
<b>Maria Tuna, MD, DPhil</b>	Centre for Prevention of Stroke and Dementia, University of Oxford, UK	Senior research fellow	Involved in the follow-up of patients
<b>Dominic Howard, MD, DPhil</b>	Centre for Prevention of Stroke and Dementia, University of Oxford, UK	Senior research fellow	Involved in the follow-up of patients
<b>Ramon Luengo-Fernandez, DPhil</b>	Centre for Prevention of Stroke and Dementia, University of Oxford, UK	Senior research fellow	Involved in the follow-up of patients

## Appendix 2 (continued)

Name	Location	Role	Contribution
<b>Lucy Binney, MD, DPhil</b>	Centre for Prevention of Stroke and Dementia, University of Oxford, UK	Senior research fellow	Involved in the follow-up of patients
<b>Ziyah Mehta, DPhil</b>	Centre for Prevention of Stroke and Dementia, University of Oxford, UK	Senior statistician	Coordinated statistical analyses
<b>Sergei Gutnikov, DPhil</b>	Centre for Prevention of Stroke and Dementia, University of Oxford, UK	Database manager	Managed the database of the study
<b>Jean Brooks</b>	Centre for Prevention of Stroke and Dementia, University of Oxford, UK	Research secretary	Involved in the follow-up of patients
<b>Aubretia McColl, MD</b>	Centre for Prevention of Stroke and Dementia, University of Oxford, UK	Clinical research fellow	Recruited patients
<b>Iain McGurgan, MD</b>	Centre for Prevention of Stroke and Dementia, University of Oxford, UK	Clinical research fellow	Recruited patients
<b>Robert Hurford, MD</b>	Centre for Prevention of Stroke and Dementia, University of Oxford, UK	Clinical research fellow	Recruited patients
<b>Dearbhla Kelly, MD</b>	Centre for Prevention of Stroke and Dementia, University of Oxford, UK	Clinical research fellow	Recruited patients
<b>Sarah Welch</b>	Centre for Prevention of Stroke and Dementia, University of Oxford, UK	Research nurse	Involved in the follow-up of patients
<b>Ellen McCulloch</b>	Centre for Prevention of Stroke and Dementia, University of Oxford, UK	Research nurse	Involved in the follow-up of patients
<b>Sally Beebe</b>	Centre for Prevention of Stroke and Dementia, University of Oxford, UK	Research nurse	Involved in the follow-up of patients

Continued

## Appendix 2 (continued)

Name	Location	Role	Contribution
<b>Karen Bowsher-Brown</b>	Centre for Prevention of Stroke and Dementia, University of Oxford, UK	Research nurse	Involved in the follow-up of patients
<b>Josephine Brooks</b>	Centre for Prevention of Stroke and Dementia, University of Oxford, UK	Research nurse	Involved in the follow-up of patients
<b>Susannah Rae</b>	Centre for Prevention of Stroke and Dementia, University of Oxford, UK	Research nurse	Involved in the follow-up of patients
<b>Emily-Rose Vaughan-Fowler</b>	Centre for Prevention of Stroke and Dementia, University of Oxford, UK	Research nurse	Involved in the follow-up of patients
<b>Robyn Harris</b>	Centre for Prevention of Stroke and Dementia, University of Oxford, UK	Research nurse	Involved in the follow-up of patients
<b>Anne-Marie Haigh</b>	Centre for Prevention of Stroke and Dementia, University of Oxford, UK	Research nurse	Involved in the follow-up of patients
<b>Michelle Wilson</b>	Centre for Prevention of Stroke and Dementia, University of Oxford, UK	Research physiotherapist	Involved in the follow-up of patients
<b>Fiona Cuthbertson</b>	Centre for Prevention of Stroke and Dementia, University of Oxford, UK	Research physiotherapist	Involved in the follow-up of patients
<b>Amy Lawson</b>	Centre for Prevention of Stroke and Dementia, University of Oxford, UK	Research assistant	Involved in the follow-up of patients
<b>Annette Burgess, PhD</b>	Centre for Prevention of Stroke and Dementia, University of Oxford, UK	Laboratory manager	Led the laboratory center
<b>Deborah Poole</b>	Centre for Prevention of Stroke and Dementia, University of Oxford, UK	Laboratory technician	Performed laboratory tests

## Appendix 2 (continued)

Name	Location	Role	Contribution
<b>Julia Duerden</b>	Centre for Prevention of Stroke and Dementia, University of Oxford, UK	Laboratory technician	Performed laboratory tests
<b>Debbie Green</b>	Centre for Prevention of Stroke and Dementia, University of Oxford, UK	Administrative assistant	Involved in the follow-up of patients
<b>Maria Drummond</b>	Centre for Prevention of Stroke and Dementia, University of Oxford, UK	Administrative assistant	Involved in the follow-up of patients

## References

- Amarenco P, Lavalley PC, Monteiro Tavares L, et al. Five-year risk of stroke after TIA or minor ischemic stroke. *N Engl J Med* 2018;378:2182–2190.
- Boulangier M, Béjot Y, Rothwell PM, Touzé E. Long-term risk of myocardial infarction compared to recurrent stroke after transient ischemic attack and ischemic stroke: systematic review and meta-analysis. *J Am Heart Assoc* 2018;7:e007267.
- Hart RG, Sharma M, Mundl H, et al. Rivaroxaban for stroke prevention after embolic stroke of undetermined source. *N Engl J Med* 2018;378:2191–2201.
- The Stroke Prevention in Reversible Ischemia Trial (SPIRIT) Study Group. A randomized trial of anticoagulants versus aspirin after cerebral ischemia of presumed arterial origin. *Ann Neurol* 1997;42:857–865.
- Bhatt DL, Eagle KA, Ohman EM, et al. Comparative determinants of 4-year cardiovascular event rates in stable outpatients at risk of or with atherothrombosis. *JAMA* 2010;304:1350–1357.
- Steg PG, Bhatt DL, Wilson PW, et al. One-year cardiovascular event rates in outpatients with atherothrombosis. *JAMA* 2007;297:1197–1206.
- van den Berg MJ, Bhatt DL, Kappelle LJ, et al. Identification of vascular patients at very high risk for recurrent cardiovascular events: validation of the current ACC/AHA very high risk criteria. *Eur Heart J* 2017;38:3211–3218.
- Eikelboom JW, Connolly SJ, Bosch J, et al. Rivaroxaban with or without aspirin in stable cardiovascular disease. *N Engl J Med* 2017;377:1319–1330.
- Anand SS, Bosch J, Eikelboom JW, et al. Rivaroxaban with or without aspirin in patients with stable peripheral or carotid artery disease: an international, randomised, double-blind, placebo-controlled trial. *Lancet* 2018;391:219–229.
- Hankey GJ. Secondary stroke prevention. *Lancet Neurol* 2014;13:178–194.
- Li L, Yiin GS, Geraghty OC, et al. Incidence, outcome, risk factors, and long-term prognosis of cryptogenic transient ischaemic attack and ischaemic stroke: a population-based study. *Lancet Neurol* 2015;14:903–913.
- Martinez-Majander N, Aarnio K, Pirinen J, et al. Embolic strokes of undetermined source in young adults: baseline characteristics and long-term outcome. *Eur J Neurol* 2018;25:535–541.
- Mas JL, Derumeaux G, Guillon B, et al. Patent foramen ovale closure or anti-coagulation vs. antiplatelets after stroke. *N Engl J Med* 2017;377:1011–1021.
- Carroll JD, Saver JL, Thaler DE, et al. Closure of patent foramen ovale versus medical therapy after cryptogenic stroke. *N Engl J Med* 2013;368:1092–1100.
- Amarenco P, Bogousslavsky J, Callahan A III, et al. High-dose atorvastatin after stroke or transient ischemic attack. *N Engl J Med* 2006;355:549–559.
- Boekholdt SM, Hovingh GK, Mora S, et al. Very low levels of atherogenic lipoproteins and the risk for cardiovascular events: a meta-analysis of statin trials. *J Am Coll Cardiol* 2014;64:485–494.
- Trt Stroke to Target. Available at: [clinicaltrials.gov/ct2/show/NCT01252875?term=NCT01252875&rank=1](https://clinicaltrials.gov/ct2/show/NCT01252875?term=NCT01252875&rank=1). Accessed October 27, 2018.
- Ridker PM, Revkin J, Amarenco P, et al. Cardiovascular efficacy and safety of bococizumab in high-risk patients. *N Engl J Med* 2017;376:1527–1539.
- Sabatine MS, Giugliano RP, Keech AC, et al. Evolocumab and clinical outcomes in patients with cardiovascular disease. *N Engl J Med* 2017;376:1713–1722.
- HPS TIMI REVEAL Collaborative Group, Bowman L, Hopewell JC, et al. Effects of anacetrapib in patients with atherosclerotic vascular disease. *N Engl J Med* 2017;377:1217–1227.
- O'Donnell MJ, Denis X, Liu L, et al. Risk factors for ischaemic and intracerebral haemorrhagic stroke in 22 countries (the Interstroke study): a case-control study. *Lancet* 2010;376:112–123.

22. Yusuf S, Hawken S, Ounpuu S, et al. Effect of potentially modifiable risk factors associated with myocardial infarction in 52 countries (the Interheart study): case-control study. *Lancet* 2004;364:937–952.
23. Kazi DS, Moran AE, Coxson PG, et al. Cost-effectiveness of pcsk9 inhibitor therapy in patients with heterozygous familial hypercholesterolemia or atherosclerotic cardiovascular disease. *JAMA* 2016;316:743–753.
24. Rothwell PM, Coull AJ, Giles MF, et al. Change in stroke incidence, mortality, case-fatality, severity, and risk factors in Oxfordshire, UK from 1981 to 2004 (Oxford Vascular Study). *Lancet* 2004;363:1925–1933.
25. Coull AJ, Silver LE, Bull LM, Giles MF, Rothwell PM, Oxford Vascular Study. Direct assessment of completeness of ascertainment in a stroke incidence study. *Stroke* 2004;35:2041–2045.
26. Feigin V, Hoorn SV. How to study stroke incidence. *Lancet* 2004;363:1920.
27. Adams HP Jr, Bendixen BH, Kappelle LJ, et al. Classification of subtype of acute ischemic stroke: definitions for use in a multicenter clinical trial: TOAST: Trial of Org 10172 in Acute Stroke Treatment. *Stroke* 1993;24:35–41.
28. Levey AS, Coresh J, Greene T, et al. Expressing the modification of diet in renal disease study equation for estimating glomerular filtration rate with standardized serum creatinine values. *Clin Chem* 2007;53:766–772.
29. Myocardial infarction redefined: a consensus document of the Joint European Society of Cardiology/American College of Cardiology Committee for the redefinition of myocardial infarction. *Eur Heart J* 2000;21:1502–1513.
30. Luepker RV, Apple FS, Christenson RH, et al. Case definitions for acute coronary heart disease in epidemiology and clinical research studies: a statement from the AHA Council on Epidemiology and Prevention; AHA Statistics Committee; World Heart Federation Council on Epidemiology and Prevention; the European Society of Cardiology Working Group on Epidemiology and Prevention; Centers for Disease Control and Prevention; and the National Heart, Lung, and Blood Institute. *Circulation* 2003;108:2543–2549.
31. Yusuf S, Zhao F, Mehta SR, Chrolavicius S, Tognoni G, Fox KK. Effects of clopidogrel in addition to aspirin in patients with acute coronary syndromes without ST-segment elevation. *N Engl J Med* 2001;345:494–502.
32. Fonarow GC, Keech AC, Pedersen TR, et al. Cost-effectiveness of evolocumab therapy for reducing cardiovascular events in patients with atherosclerotic cardiovascular disease. *JAMA Cardiol* 2017;2:1069–1078.
33. Li L, Geraghty OC, Mehta Z, Rothwell PM. Age-specific risks, severity, time course, and outcome of bleeding on long-term antiplatelet treatment after vascular events: a population-based cohort study. *Lancet* 2017;390:490–499.
34. Barnett HJ, Taylor DW, Eliasziw M, et al. Benefit of carotid endarterectomy in patients with symptomatic moderate or severe stenosis: North American Symptomatic Carotid Endarterectomy Trial Collaborators. *N Engl J Med* 1998;339:1415–1425.
35. Randomised trial of endarterectomy for recently symptomatic carotid stenosis: final results of the MRC European Carotid Surgery Trial (ECST). *Lancet* 1998;351:1379–1387.
36. Third report of the National Cholesterol Education Program (NCEP) expert panel on detection, evaluation, and treatment of high blood cholesterol in adults (Adult Treatment Panel III) final report. *Circulation* 2002;106:3143–3421.
37. Lackland DT, Elkind MS, D'Agostino R Sr, et al. Inclusion of stroke in cardiovascular risk prediction instruments: a statement for healthcare professionals from the American Heart Association/American Stroke Association. *Stroke* 2012;43:1998–2027.
38. Wijnhoud AD, Koudstaal PJ, Dippel DW. The prognostic value of pulsatility index, flow velocity, and their ratio, measured with TCD ultrasound, in patients with a recent TIA or ischemic stroke. *Acta Neurol Scand* 2011;124:238–244.
39. Boulanger M, Poon MT, Wild SH, Al-Shahi Salman R. Association between diabetes mellitus and the occurrence and outcome of intracerebral hemorrhage. *Neurology* 2016;87:870–878.
40. Diener HC, Easton JD, Granger CB, et al. Design of randomized, double-blind, evaluation in secondary stroke prevention comparing the efficacy and safety of the oral thrombin inhibitor dabigatran etexilate vs. acetylsalicylic acid in patients with embolic stroke of undetermined source (RE-SPECT ESUS). *Int J Stroke* 2015;10:1309–1312.
41. PROGRESS Collaborative Group. Randomised trial of a perindopril-based blood-pressure-lowering regimen among 6,105 individuals with previous stroke or transient ischaemic attack. *Lancet* 2001;358:1033–1041.
42. Hamann GF, Weimar C, Glahn J, Busse O, Diener H-C. Adherence to secondary stroke prevention strategies: results from the German Stroke Data Bank. *Cerebrovasc Dis* 2003;15:282–288.
43. Hillen T, Dundas R, Lawrence E, Stewart JA, Rudd AG, Wolfe CD. Antithrombotic and antihypertensive management 3 months after ischemic stroke: a prospective study in an inner city population. *Stroke* 2000;31:469–475.
44. Mouradian MS, Majumdar SR, Senthilselvan A, Khan K, Shuaib A. How well are hypertension, hyperlipidemia, diabetes, and smoking managed after a stroke or transient ischemic attack? *Stroke* 2002;33:1656–1659.
45. Ovbiagele B, Saver JL, Fredieu A, et al. In-hospital initiation of secondary stroke prevention therapies yields high rates of adherence at follow-up. *Stroke* 2004;35:2879–2883.
46. Hemingway H, Shipley M, Britton A, Page M, Macfarlane P, Marmot M. Prognosis of angina with and without a diagnosis: 11 year follow up in the Whitehall II prospective cohort study. *BMJ* 2003;327:895.
47. Thygesen K, Alpert JS, Jaffe AS, et al. Fourth universal definition of myocardial infarction (2018). *Eur Heart J* 2019;40:237–269.

# Neurology®

## Effect of coexisting vascular disease on long-term risk of recurrent events after TIA or stroke

Marion Boulanger, Linxin Li, Shane Lyons, et al.  
*Neurology* 2019;93:e695-e707 Published Online before print July 23, 2019  
DOI 10.1212/WNL.0000000000007935

**This information is current as of July 23, 2019**

<b>Updated Information &amp; Services</b>	including high resolution figures, can be found at: <a href="http://n.neurology.org/content/93/7/e695.full">http://n.neurology.org/content/93/7/e695.full</a>
<b>References</b>	This article cites 46 articles, 13 of which you can access for free at: <a href="http://n.neurology.org/content/93/7/e695.full#ref-list-1">http://n.neurology.org/content/93/7/e695.full#ref-list-1</a>
<b>Subspecialty Collections</b>	This article, along with others on similar topics, appears in the following collection(s): <b>All Cerebrovascular disease/Stroke</b> <a href="http://n.neurology.org/cgi/collection/all_cerebrovascular_disease_stroke">http://n.neurology.org/cgi/collection/all_cerebrovascular_disease_stroke</a> <b>Cardiac</b> <a href="http://n.neurology.org/cgi/collection/cardiac">http://n.neurology.org/cgi/collection/cardiac</a> <b>Cohort studies</b> <a href="http://n.neurology.org/cgi/collection/cohort_studies">http://n.neurology.org/cgi/collection/cohort_studies</a> <b>Prognosis</b> <a href="http://n.neurology.org/cgi/collection/prognosis">http://n.neurology.org/cgi/collection/prognosis</a> <b>Stroke prevention</b> <a href="http://n.neurology.org/cgi/collection/stroke_prevention">http://n.neurology.org/cgi/collection/stroke_prevention</a>
<b>Permissions &amp; Licensing</b>	Information about reproducing this article in parts (figures, tables) or in its entirety can be found online at: <a href="http://www.neurology.org/about/about_the_journal#permissions">http://www.neurology.org/about/about_the_journal#permissions</a>
<b>Reprints</b>	Information about ordering reprints can be found online: <a href="http://n.neurology.org/subscribers/advertise">http://n.neurology.org/subscribers/advertise</a>

*Neurology*® is the official journal of the American Academy of Neurology. Published continuously since 1951, it is now a weekly with 48 issues per year. Copyright © 2019 The Author(s). Published by Wolters Kluwer Health, Inc. on behalf of the American Academy of Neurology. All rights reserved. Print ISSN: 0028-3878. Online ISSN: 1526-632X.

