

# Teaching Video NeuroImages: Vertical one-and-a-half syndrome

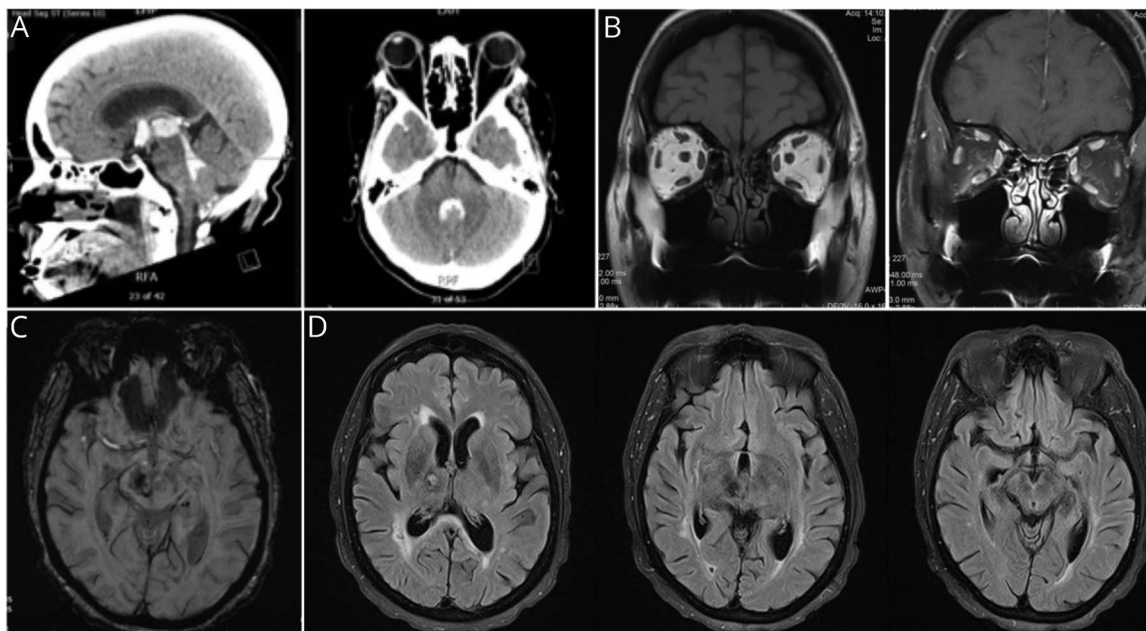
Laura Donaldson, MD, PhD, and Edward Margolin, MD

*Neurology*® 2019;93:e1577-e1578. doi:10.1212/WNL.0000000000008332

**Correspondence**

Dr. Margolin  
edmargin@gmail.com

**Figure** Right thalamomesencephalic stroke causing vertical one-and-a-half syndrome



(A) Sagittal (left) and axial (right) CT images show acute intraventricular, intrathalamic, and mesencephalic hemorrhage. (B) Coronal MRI slices show normal orbits (left: T1-weighted, right: T1-weighted fat-saturated postcontrast). (C) Susceptibility-weighted axial slice shows hemosiderin deposition and (D) T2-weighted fluid-attenuated inversion recovery images show volume loss in the right thalamus and midbrain months after the acute insult.

A 51-year-old woman with history of hypertension presented with left-sided weakness and diplopia. Imaging revealed a large hemorrhagic infarct involving the right thalamus and rostral midbrain with intraventricular extension (figure). Neuro-ophthalmic examination demonstrated bilateral upgaze palsy with limitation of infraduction on the right (video 1), overcome with a doll's head maneuver (video 2). Bilateral lid retraction was present with markedly reduced convergence along with convergence-retraction nystagmus. Vertical one-and-a-half syndrome is an uncommon presentation resulting from a unilateral thalamomesencephalic stroke with involvement of the rostral interstitial nucleus of the medial longitudinal fasciculus and posterior commissure<sup>1</sup> and was accompanied here by dorsal midbrain syndrome.

## Study funding

No targeted funding reported.

## MORE ONLINE

### ▶ Video

### → Teaching slides

[links.lww.com/WNL/A976](https://links.lww.com/WNL/A976)

From the Department of Ophthalmology (L.D.), McMaster University, Hamilton; and Department of Ophthalmology and Vision Sciences (E.M.), University of Toronto, Canada. Go to [Neurology.org/N](https://Neurology.org/N) for full disclosures. Funding information and disclosures deemed relevant by the authors, if any, are provided at the end of the article.

## Disclosure

The authors report no disclosures relevant to the manuscript. Go to [Neurology.org/N](http://Neurology.org/N) for full disclosures.

## Appendix Authors

| Name                            | Location                              | Role   | Contribution            |
|---------------------------------|---------------------------------------|--------|-------------------------|
| <b>Laura Donaldson, MD, PhD</b> | McMaster University, Hamilton, Canada | Author | Prepared the manuscript |

## Appendix *(continued)*

| Name                       | Location                      | Role                 | Contribution                                    |
|----------------------------|-------------------------------|----------------------|---|
| <b>Edward Margolin, MD</b> | University of Toronto, Canada | Corresponding author | Revised the manuscript for intellectual content |

## Reference

1. Bogousslavsky J, Regli F. Upgaze palsy and monocular paresis of downward gaze from ipsilateral thalamo-mesencephalic infarction: a vertical "one-and-a-half" syndrome. *J Neurol* 1984;231:43–45.

# Neurology®

## Teaching Video NeuroImages: Vertical one-and-a-half syndrome

Laura Donaldson and Edward Margolin

*Neurology* 2019;93:e1577-e1578

DOI 10.1212/WNL.00000000000008332

**This information is current as of October 14, 2019**

|   |   |
|---|---|
| <b>Updated Information &amp; Services</b> | including high resolution figures, can be found at:<br><a href="http://n.neurology.org/content/93/16/e1577.full">http://n.neurology.org/content/93/16/e1577.full</a>  |
| <b>References</b>                         | This article cites 1 articles, 0 of which you can access for free at:<br><a href="http://n.neurology.org/content/93/16/e1577.full#ref-list-1">http://n.neurology.org/content/93/16/e1577.full#ref-list-1</a>  |
| <b>Subspecialty Collections</b>           | This article, along with others on similar topics, appears in the following collection(s):<br><b>All Cerebrovascular disease/Stroke</b><br><a href="http://n.neurology.org/cgi/collection/all_cerebrovascular_disease_stroke">http://n.neurology.org/cgi/collection/all_cerebrovascular_disease_stroke</a><br><b>Diplopia (double vision)</b><br><a href="http://n.neurology.org/cgi/collection/diplopia_double_vision">http://n.neurology.org/cgi/collection/diplopia_double_vision</a><br><b>Ocular motility</b><br><a href="http://n.neurology.org/cgi/collection/ocular_motility">http://n.neurology.org/cgi/collection/ocular_motility</a> |
| <b>Permissions &amp; Licensing</b>        | Information about reproducing this article in parts (figures, tables) or in its entirety can be found online at:<br><a href="http://www.neurology.org/about/about_the_journal#permissions">http://www.neurology.org/about/about_the_journal#permissions</a>   |
| <b>Reprints</b>                           | Information about ordering reprints can be found online:<br><a href="http://n.neurology.org/subscribers/advertise">http://n.neurology.org/subscribers/advertise</a>   |

*Neurology*® is the official journal of the American Academy of Neurology. Published continuously since 1951, it is now a weekly with 48 issues per year. Copyright © 2019 American Academy of Neurology. All rights reserved. Print ISSN: 0028-3878. Online ISSN: 1526-632X.

