

# Shape-similar errors in Chinese pure alexia

Shi-Lin Yang, MD,\* Xiang Han, MD,\* and Qiang Dong, MD

*Neurology*® 2019;92:388-389. doi:10.1212/WNL.0000000000006964

**Correspondence**

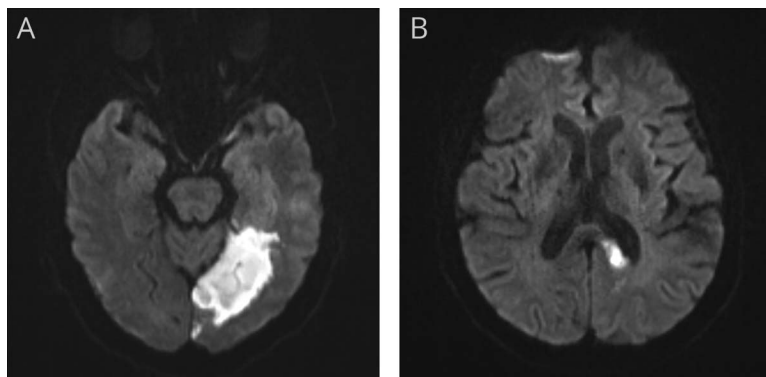
Dr. Dong  
dong\_qiang@fudan.edu.cn

**Figure 1** Examples of shape-similar errors in the oral reading test

Character shown	每	采	京	干	勺	目	木
Character read aloud	母	来	亲	子	的	自	未
Character shown	水	色	早	钓	池	豹	痛
Character read aloud	未	爸	早	的	地	钩	俑

The oral reading test showed that the patient often read one character as another one with a similar shape but different meaning and pronunciation.

**Figure 2** MRI of the brain



Brain MRI showed acute infarction involving the left occipital lobe, medial temporal lobe (A), and splenium of corpus callosum (B).

A 64-year-old literate Chinese man presented with sudden onset of difficulty reading. Examination revealed right homonymous hemianopsia and pure alexia. The oral reading test showed that he often read one character as another one with a similar shape but different meaning and pronunciation (figure 1). Brain MRI showed acute infarction involving the left occipital lobe, medial temporal lobe, and splenium of corpus callosum (figure 2). Pure alexia is a clinical disconnection syndrome that was first described in a patient with a similar infarction by Dejerine in 1892.<sup>1</sup> Shape-similar errors may be a phenomenon characteristic of Chinese pure alexia.

\*These authors contributed equally to this work.

From the Department of Neurology, Huashan Hospital, Fudan University, Shanghai, China.

Go to [Neurology.org/N](http://Neurology.org/N) for full disclosures. Funding information and disclosures deemed relevant by the authors, if any, are provided at the end of the article.

## Author contributions

S.-L. Yang: collection and interpretation of data, manuscript drafting. X. Han: collection and interpretation of data. Q. Dong: supervision, critical revision of manuscript.

## Study funding

No targeted funding reported.

## Disclosure

The authors report no disclosures relevant to the manuscript. Go to [Neurology.org/N](http://Neurology.org/N) for full disclosures.

## Reference

1. Déjerine J. Contribution à l'étude anatomopathologique et clinique des différents variétés de cécité verbale[J] [in French]. *Mémoires de la Société de Biologie* 1892;4: 61–90.

---

## Subspecialty Alerts by E-mail!

Customize your online journal experience by signing up for e-mail alerts related to your subspecialty or area of interest. Access this free service by clicking on the “My Alerts” link on the home page. An extensive list of subspecialties, methods, and study design choices will be available for you to choose from—allowing you priority alerts to cutting-edge research in your field!

---

---

## Neurology® Online CME Program

Earn CME while reading *Neurology*. This program is available only to online *Neurology* subscribers. Read the articles marked CME, go to [Neurology.org](http://Neurology.org), and click on CME. This will provide all of the information necessary to get started. The American Academy of Neurology (AAN) is accredited by the Accreditation Council for Continuing Medical Education (ACCME) to sponsor continuing medical education for physicians. *Neurology* is planned and produced in accordance with the ACCME Essentials. For more information, contact AAN Member Services at 800-879-1960.

---

---

## Visit the Neurology® Resident & Fellow Website

Click on Residents & Fellows tab at [Neurology.org](http://Neurology.org).

Now offering:

- *Neurology*® Resident & Fellow Editorial team information
- “Search by subcategory” option
- E-pearl of the Week
- RSS Feeds
- Direct links to Continuum®, Career Planning, and AAN Resident & Fellow pages
- Recently published Resident & Fellow articles
- Podcast descriptions

 Find *Neurology*® Residents & Fellows Section on Facebook: <http://tinyurl.com/o8ahsys>

 Follow *Neurology*® on Twitter: <http://twitter.com/GreenJournal>

---

# Neurology<sup>®</sup>

## Shape-similar errors in Chinese pure alexia

Shi-Lin Yang, Xiang Han and Qiang Dong

*Neurology* 2019;92;388-389

DOI 10.1212/WNL.0000000000006964

**This information is current as of February 18, 2019**

<b>Updated Information &amp; Services</b>	including high resolution figures, can be found at: <a href="http://n.neurology.org/content/92/8/388.full">http://n.neurology.org/content/92/8/388.full</a>
<b>References</b>	This article cites 1 articles, 0 of which you can access for free at: <a href="http://n.neurology.org/content/92/8/388.full#ref-list-1">http://n.neurology.org/content/92/8/388.full#ref-list-1</a>
<b>Subspecialty Collections</b>	This article, along with others on similar topics, appears in the following collection(s): <b>Assessment of cognitive disorders/dementia</b> <a href="http://n.neurology.org/cgi/collection/assessment_of_cognitive_disorders_dementia">http://n.neurology.org/cgi/collection/assessment_of_cognitive_disorders_dementia</a> <b>Infarction</b> <a href="http://n.neurology.org/cgi/collection/infarction">http://n.neurology.org/cgi/collection/infarction</a> <b>Visual processing</b> <a href="http://n.neurology.org/cgi/collection/visual_processing">http://n.neurology.org/cgi/collection/visual_processing</a>
<b>Permissions &amp; Licensing</b>	Information about reproducing this article in parts (figures, tables) or in its entirety can be found online at: <a href="http://www.neurology.org/about/about_the_journal#permissions">http://www.neurology.org/about/about_the_journal#permissions</a>
<b>Reprints</b>	Information about ordering reprints can be found online: <a href="http://n.neurology.org/subscribers/advertise">http://n.neurology.org/subscribers/advertise</a>

*Neurology*® is the official journal of the American Academy of Neurology. Published continuously since 1951, it is now a weekly with 48 issues per year. Copyright © 2019 American Academy of Neurology. All rights reserved. Print ISSN: 0028-3878. Online ISSN: 1526-632X.

