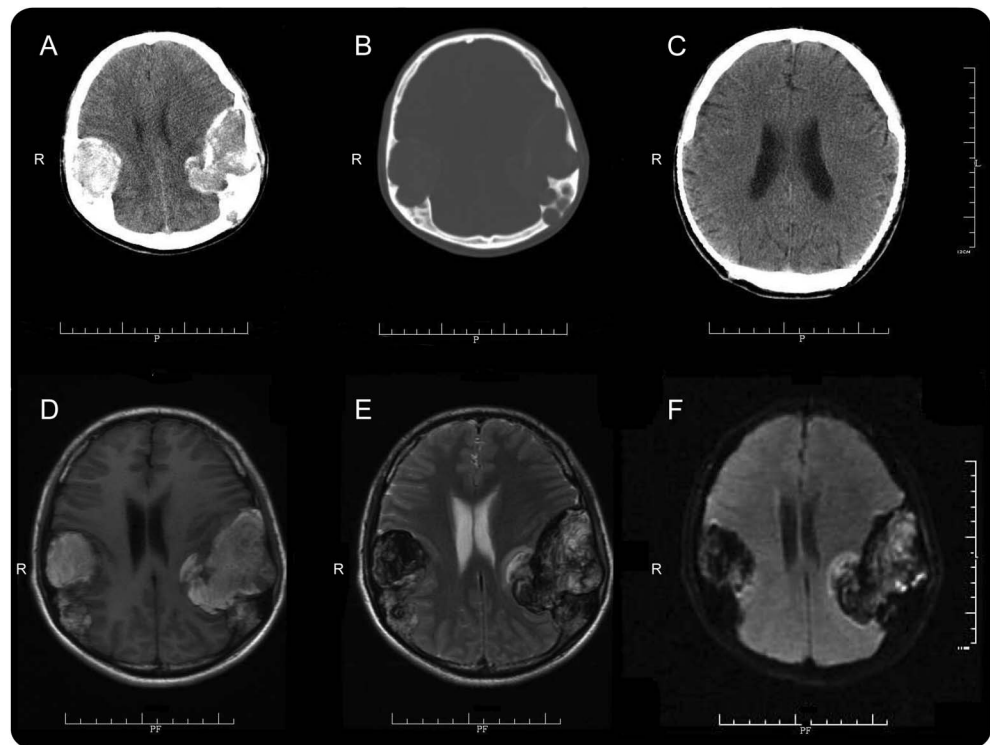


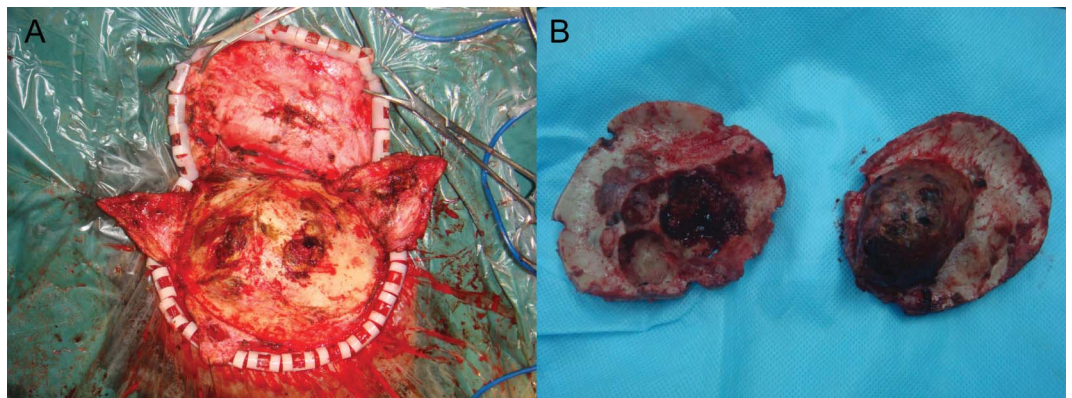
Bilateral cranial hemophilic pseudotumors

Figure 1 Cranial CT and MRI



Axial CT scan (A) demonstrates heterogeneous high-density lesions with irregular bone erosion when set to bone window (B). A 3-year follow-up CT scan (C) shows no sign of recurrence. T1-weighted (D), T2-weighted (E), and diffusion-weighted MRI (F) reveal heterogeneous extra-axial lesions on images consistent with chronic hemorrhage of varying ages.

Figure 2 Intraoperative photographs



At operation, hemophilic pseudotumors were observed with subgaleal and epidural extension (A). Resected surgical specimens (B) show multicystic masses containing clotted blood.

A 39-year-old man with mild hemophilia A presented with a 6-month history of repeated headache with mild difficulty in verbal expression. He had a history of pseudotumor in the left tibia, which had been treated by surgery 3 years ago. CT and MRI demonstrated bilateral extra-axial lesions with bone destruction (figure 1).¹ These extremely rare cranial hemophilic pseudotumors were totally resected after adequate replacement therapy (figure 2).² Histologic examination disclosed a coagulum of blood products surrounded by a fibrous capsule with hemosiderin-laden macrophages.

Zhe Zhang, MD, Yu Zhu, MD, Ze-Bin Fang, MD, Ying Tong, MD, PhD

From the First Affiliated Hospital, School of Medicine, Zhejiang University, Hangzhou, China.

Author contributions: Dr. Zhang: drafting the manuscript. Dr. Zhu: analysis and interpretation of data. Dr. Fang: analysis and acquisition of data. Dr. Tong: revising the manuscript.

Study funding: No targeted funding reported.

Disclosure: The authors report no disclosures relevant to the manuscript. Go to Neurology.org for full disclosures.

Correspondence to Dr. Tong: tongying216@gmail.com

1. Horton DD, Pollay M, Wilson DA, et al. Cranial hemophilic pseudotumor: case report. *J Neurosurg* 1993;79:936–938.
2. Sim KB, Hong SK. Cranial hemophilic pseudotumor: case report. *Neurosurgery* 1996;39:1239–1242.

Neurology[®]

Bilateral cranial hemophilic pseudotumors

Zhe Zhang, Yu Zhu, Ze-Bin Fang, et al.

Neurology 2014;82;638-639

DOI 10.1212/WNL.0000000000000129

This information is current as of February 17, 2014

Updated Information & Services	including high resolution figures, can be found at: http://n.neurology.org/content/82/7/638.full
References	This article cites 2 articles, 0 of which you can access for free at: http://n.neurology.org/content/82/7/638.full#ref-list-1
Subspecialty Collections	This article, along with others on similar topics, appears in the following collection(s): All Imaging http://n.neurology.org/cgi/collection/all_imaging Hematologic http://n.neurology.org/cgi/collection/hematologic
Permissions & Licensing	Information about reproducing this article in parts (figures, tables) or in its entirety can be found online at: http://www.neurology.org/about/about_the_journal#permissions
Reprints	Information about ordering reprints can be found online: http://n.neurology.org/subscribers/advertise

Neurology® is the official journal of the American Academy of Neurology. Published continuously since 1951, it is now a weekly with 48 issues per year. Copyright © 2014 American Academy of Neurology. All rights reserved. Print ISSN: 0028-3878. Online ISSN: 1526-632X.

