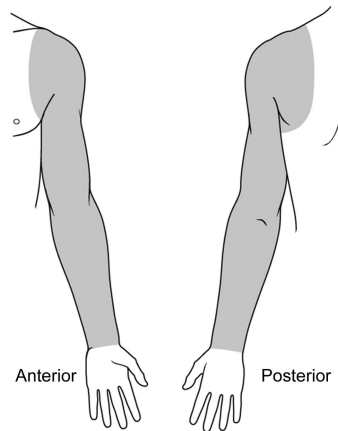


Teaching *NeuroImages*: Isolated sensory loss of the arm sparing the hand in cortical infarction

M.-J. Cha, MD
S.W. Kim, MD
E.H. Kim, MD
Y.D. Kim, MD
H.S. Nam, MD, PhD
J.H. Heo, MD, PhD

Address correspondence and
reprint requests to Dr. Ji Hoe
Heo, Department of Neurology,
Yonsei University College of
Medicine, 250 Seongsan-no,
Seodaemun-ku, 120-752,
Seoul, Korea
jhheo@yuhs.ac

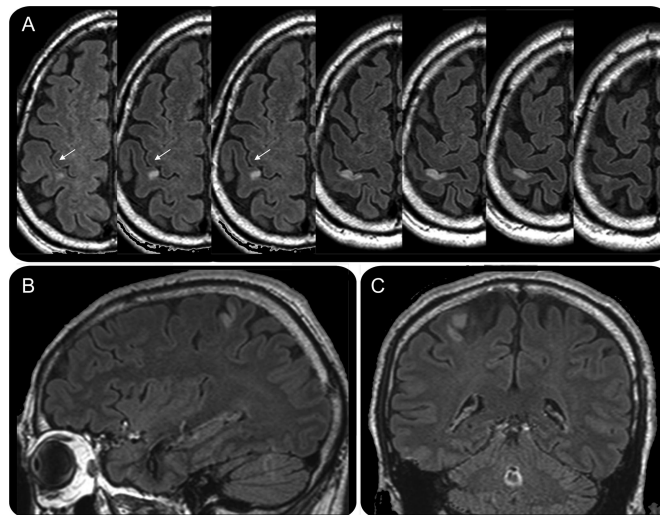
Figure 1 Drawings showing the area of decreased sensation (shaded area)



A 66-year-old man with hypertension and diabetes developed paresthesias on his left arm. Examination showed that his sensory loss involved the shoulder, arm, and forearm, but spared the hand (figure 1). MRI showed an acute cortical infarction (figure 2). Although motor areas for the shoulder-arm-forearm are located medially and superiorly to the hand area, the precise sensory areas for them are unknown.^{1,2} This case demonstrates that isolated sensory loss may be due to cortical infarctions and sensory areas for the shoulder-arm-forearm may have similar topographic arrangement in the postcentral gyrus to that of the motor areas in the precentral gyrus.

1. Maldjian JA, Gottschalk A, Patel RS, Detre JA, Alsop DC. The sensory somatotopic map of the human hand demonstrated at 4 Tesla. *Neuroimage* 1999;10:55–62.
2. Hlustik P, Solodkin A, Gullapalli RP, Noll DC, Small SL. Somatotopy in human primary motor and somatosensory hand representations revisited. *Cereb Cortex* 2001;11:312–321.

Figure 2 MRI: (A) Axial, (B) sagittal, and (C) coronal images of fluid-attenuated inversion recovery 5 days after onset showing an acute infarction in the anterior portion of the right postcentral gyrus



The lesion is located medially, superiorly, and posteriorly to the precentral hand knob area (arrow).

From the Department of Neurology, Yonsei University College of Medicine, Seoul, Korea.

Study funding: Supported by the Korea Healthcare Technology R&D Project, Ministry of Health & Welfare, & Family Affairs, Republic of Korea (A085136).

Disclosure: Dr. Cha, Dr. S.W. Kim, Dr. E.H. Kim, Dr. Y.D. Kim, and Dr. Nam report no disclosures. Dr. Heo serves as editor for the *Korean Journal of Medical Science* and receives research support from the Korea Healthcare Technology R&D Project, Ministry of Health & Welfare, & Family Affairs, Republic of Korea.

Neurology[®]

Teaching *NeuroImages*: Isolated sensory loss of the arm sparing the hand in cortical infarction

M.-J. Cha, S.W. Kim, E.H. Kim, et al.
Neurology 2011;76:e3
DOI 10.1212/WNL.0b013e318203e98b

This information is current as of December 27, 2010

Updated Information & Services	including high resolution figures, can be found at: http://n.neurology.org/content/76/1/e3.full
References	This article cites 2 articles, 0 of which you can access for free at: http://n.neurology.org/content/76/1/e3.full#ref-list-1
Subspecialty Collections	This article, along with others on similar topics, appears in the following collection(s): Cortical localization http://n.neurology.org/cgi/collection/cortical_localization Infarction http://n.neurology.org/cgi/collection/infarction MRI http://n.neurology.org/cgi/collection/mri
Permissions & Licensing	Information about reproducing this article in parts (figures, tables) or in its entirety can be found online at: http://www.neurology.org/about/about_the_journal#permissions
Reprints	Information about ordering reprints can be found online: http://n.neurology.org/subscribers/advertise

Neurology® is the official journal of the American Academy of Neurology. Published continuously since 1951, it is now a weekly with 48 issues per year. Copyright © 2010 by AAN Enterprises, Inc.. All rights reserved. Print ISSN: 0028-3878. Online ISSN: 1526-632X.

