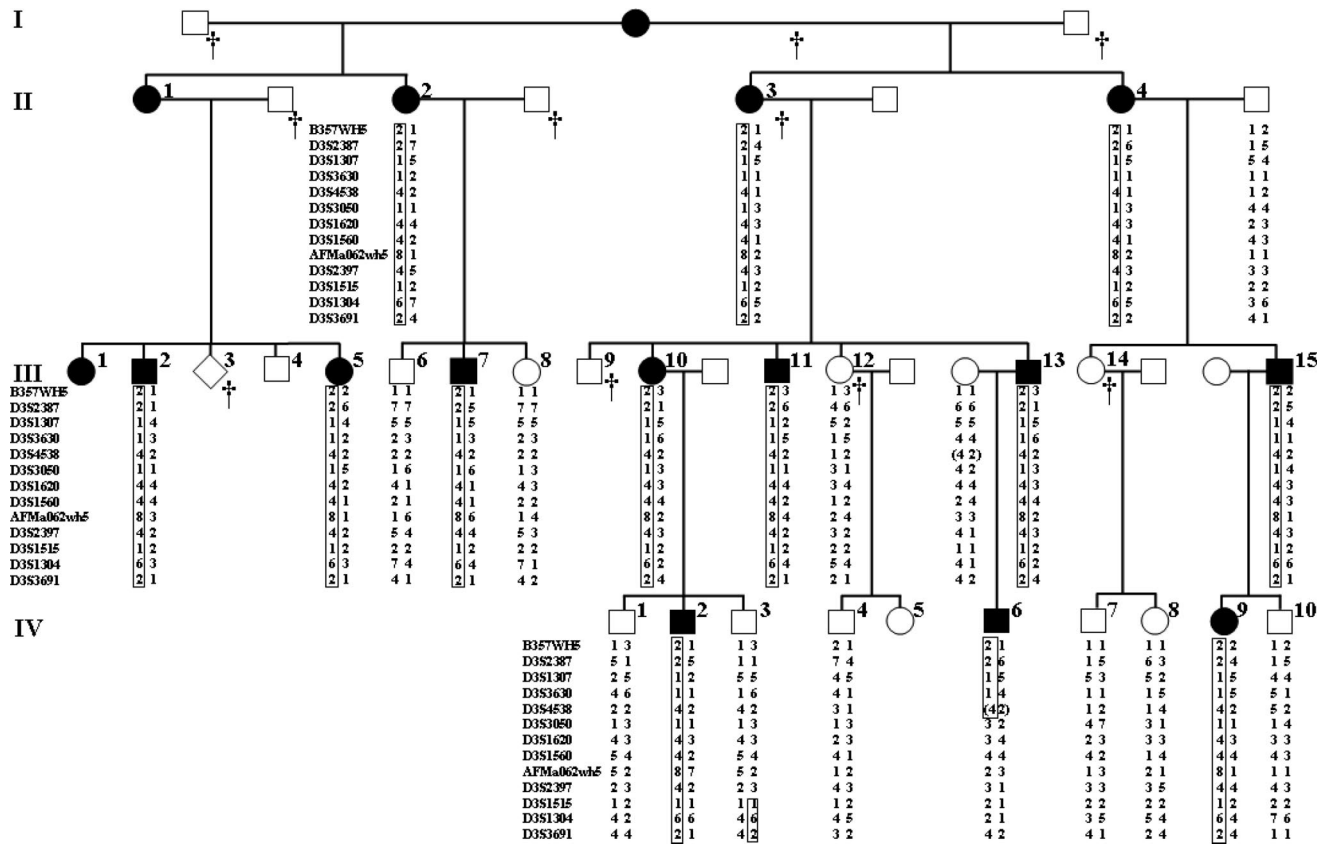


Correction

The contactin 4 gene locus at 3p26 is a candidate gene of SCA16

In the article “The contactin 4 gene locus at 3p26 is a candidate gene of SCA16” by S. Miura et al. (*Neurology* 2006;67:1236–1241), there was an error in figure 1. In the original figure 1, the numbers 13 and 14 were shifted leftward from their proper locations. In the correct figure 1, III-13 and III-14 should indicate the last son of II-3 and the first daughter of II-4, respectively, as shown in the corrected figure below. The authors regret the error.



Neurology[®]

The contactin 4 gene locus at 3p26 is a candidate gene of SCA16

Neurology 2006;67;2267

DOI 10.1212/01.wnl.0000256042.25928.bd

This information is current as of December 26, 2006

Updated Information & Services

including high resolution figures, can be found at:
<http://n.neurology.org/content/67/12/2267.full>

Permissions & Licensing

Information about reproducing this article in parts (figures, tables) or in its entirety can be found online at:
http://www.neurology.org/about/about_the_journal#permissions

Reprints

Information about ordering reprints can be found online:
<http://n.neurology.org/subscribers/advertise>

Neurology® is the official journal of the American Academy of Neurology. Published continuously since 1951, it is now a weekly with 48 issues per year. Copyright . All rights reserved. Print ISSN: 0028-3878. Online ISSN: 1526-632X.

