

Association of Bone Mineral Density and Dementia

The Rotterdam Study

Tian Xiao, MD,* Samuel Ghatan, MSc,* Sanne S. Mooldijk, MD, Katerina Trajanoska, MD, PhD, Ling Oei, MD, PhD, M. Medina Gomez, PhD, M. Kamran Ikram, MD, PhD, Fernando Rivadeneira, PhD, and M. Arfan Ikram, MD, PhD

Correspondence

Dr. Ikram
m.a.ikram@erasmusmc.nl

Neurology® 2023;100:e2125-e2133. doi:10.1212/WNL.0000000000207220

Abstract

Background and Objectives

Low bone mineral density (BMD) and dementia commonly co-occur in older individuals, with bone loss accelerating in patients with dementia due to physical inactivity and poor nutrition. However, uncertainty persists over the extent to which bone loss already exists before onset of dementia. Therefore, we investigated how dementia risk was affected by BMD at various skeletal regions in community-dwelling older adults.

Methods

In a prospective population-based cohort study, BMD at the femoral neck, lumbar spine, and total body and the trabecular bone score (TBS) were obtained using dual-energy X-ray absorptiometry in 3,651 participants free from dementia between 2002 and 2005. Persons at risk of dementia were followed up until January 1, 2020. For analyses of the association between BMD at baseline and the risk of incident dementia, we used Cox proportional hazards regression analyses, adjusting for age, sex, educational attainment, physical activity, smoking status, body mass index, systolic and diastolic blood pressure, cholesterol level, high-density lipoprotein cholesterol, history of comorbidities (stroke and diabetes mellitus), and *APOE* genotype.

Results

Among the 3,651 participants (median age 72.3 ± 10.0 years, 57.9% women), 688 (18.8%) developed incident dementia during a median of 11.1 years, of whom 528 (76.7%) developed Alzheimer disease (AD). During the whole follow-up period, participants with lower BMD at the femoral neck (per SD decrease) were more likely to develop all-cause dementia (hazard ratio [HR]_{total follow-up} 1.12, 95% CI 1.02–1.23) and AD (HR_{total follow-up} 1.14, 95% CI 1.02–1.28). Within the first 10 years after baseline, the risk of dementia was greatest for groups with the lowest tertile of BMD (femoral neck BMD, HR_{0–10 years} 2.03; 95% CI 1.39–2.96; total body BMD, HR_{0–10 years} 1.42; 95% CI 1.01–2.02; and TBS, HR_{0–10 years} 1.59; 95% CI 1.11–2.28).

Discussion

In conclusion, participants with low femoral neck and total body BMD and low TBS were more likely to develop dementia. Further studies should focus on the predictive ability of BMD for dementia.

*These authors contributed equally to this work.

From the Department of Epidemiology (T.X., S.G., S.S.M., K.T., M.K.I., M.A.I.), Department of Internal Medicine (S.G., K.T., L.O., M.M.G., F.R.), and Department of Neurology (M.K.I.), Erasmus MC University Medical Center Rotterdam, the Netherlands.

Go to [Neurology.org/N](https://www.neurology.org/N) for full disclosures. Funding information and disclosures deemed relevant by the authors, if any, are provided at the end of the article.

The Article Processing Charge was funded by UKB Waiver - Erasmus MC.

This is an open access article distributed under the terms of the Creative Commons Attribution-NonCommercial-NoDerivatives License 4.0 (CC BY-NC-ND), which permits downloading and sharing the work provided it is properly cited. The work cannot be changed in any way or used commercially without permission from the journal.

Glossary

AD = Alzheimer disease; **BMD** = bone mineral density; **DXA** = dual-energy X-ray absorptiometry; **GMS** = geriatric mental state schedule; **HR** = hazard ratio; **MMSE** = Mini-Mental State Examination; **RS** = Rotterdam Study; **TBS** = trabecular bone score.

More than 45 million people worldwide experience dementia, and this figure is estimated to double in the next 2 decades.^{1,2} The initial step in mapping the health journey of persons developing dementia and understanding how systemic changes contribute to the pathogenesis and clinical manifestation of dementia is crucial to the development of efficacious preventive strategies. Numerous chronic conditions, including cardiac disorders, diabetes, lung function impairment, and kidney disease,^{3,4} have been related to dementia. Several studies have also suggested a link between bone mineral density (BMD) and dementia or cognitive impairment,^{5,6} most likely explained by shared risk factors, such as old age, subclinical hyperthyroidism,⁷ sarcopenia,⁸ sex steroids,⁹ physical inactivity,⁸ and vitamin D deficiency.¹⁰ While it remains unclear whether bone health itself may be causally linked to dementia, it is an important predictor of fracture,^{11,12} which is an important source of morbidity in dementia and can lead to loss of independence.¹³ Therefore, temporally linking BMD to dementia can provide important insights into how comorbidities occur at the prodromal phase of dementia. This in turn can aid in preventive strategies aimed at optimizing the health and care of patients with dementia, including maintaining functional independence.

Previous studies focused solely on BMD, assessed through dual-energy X-ray absorptiometry (DXA) scanning of clinically relevant skeletal sites, that is, femoral neck and lumbar spine.¹⁴ More recently, trabecular bone score (TBS) has been developed, which is a novel gray-level texture measurement connected to bone microarchitecture and other structural features.^{15,16} The TBS offers further details, such as bone microarchitecture, which are not possible to infer from the areal BMD.

In this study, we aimed to investigate the association between BMD, measured across multiple skeletal sites, and dementia risk in community-dwelling older adults.

Methods

Study Population

This study was performed within the Rotterdam Study (RS), a prospective ongoing cohort study that started in 1990, and all participants aged 45 years or older were invited for studying chronic diseases in the general population.¹⁷ The Rotterdam cohort comprises 1 original cohort (RS-I, initiated in 1990, with 7,983 participants aged 55 years or older) and other 2 cohorts (RS-II, starting from 2000, with 3,011 participants aged 55 years or older; and RS-III, starting from 2006, with 3,932 participants aged 45 years or older). Every 4–5 years, participants participated in consecutive follow-up home interviews and diverse

physical tests at the medical research center. The study has been approved by the medical ethics committee of the Erasmus Medical Center (Rotterdam, the Netherlands) and the review board of the Netherlands Ministry of Health, Welfare and Sports (1068889-159521-PG). At baseline, between 2002 and 2005, participants of RS-I and RS-II underwent bone scans. A total of 3,651 persons with DXA scans and without prevalent dementia were finally included in this study (Figure 1).

Measurements of BMD

BMD at the femoral neck, the lumbar spine, and the total body were measured using specific Prodigy DXA densitometer, as described elsewhere.¹⁸ A trained technician performed and verified all bone scans and made adjustments when necessary. A total of 3,651 participants had completed at least 1 scan of BMD, of whom 3,584 participants had data on BMD at the femoral neck, 3,608 at the lumbar spine, and 3,633 of the total body.

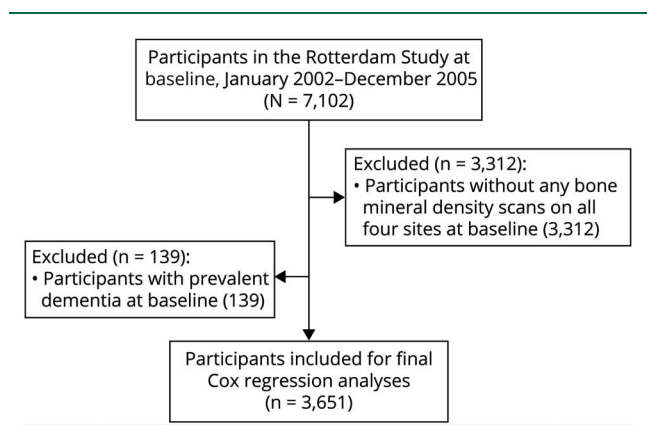
Measurement of TBS

TBS was calculated using the TBS iNsight software (Med-Imaps, Geneva, Switzerland).¹⁵ In brief, the TBS is a novel gray-level texture measurement,^{15,16} and a higher score indicates stronger and more fracture-resistant microarchitecture.¹⁹ For each region of measurement (the L₂, L₃, and L₄ vertebrae),¹⁹ TBS was assessed using gray-level analysis of the DXA images, and the methodology of the TBS has been described elsewhere.¹⁶ TBS was available for 3,573 participants at baseline.

Dementia Assessment

The Mini-Mental State Examination (MMSE) and the geriatric mental state schedule (GMS) were used for detecting dementia at baseline and subsequent visits.¹⁷ Further investigation and

Figure 1 Flowchart for Participants With Bone Mineral Density Scans Included in the Study



interview, including the Cambridge Examination for Mental Disorders of the Elderly, were conducted on participants with an MMSE score <26 or GMS score >0. In addition, the study database was electronically linked to medical records from general practitioners and the regional institute for outpatient mental health care, allowing for the ongoing monitoring of incident dementia. When necessary, cognition tests and clinical neuroimaging were used to confirm dementia subtypes.¹⁷ An adjudication panel headed by a consultant neurologist established the final diagnosis in accordance with the accepted dementia diagnostic criteria (*Diagnostic and Statistical Manual of Mental Disorder, Third Edition-Revised*) and Alzheimer disease (AD) (National Institute of Neurological and Communicative Disorders and Stroke-Alzheimer's Disease and Related Disorders Association). The follow-ups were stopped until meeting any of following scenarios, including incident dementia diagnosis, death, loss to follow-up, or January 1, 2020, whichever came first.

Covariables

Potential covariables were selected according to literature evidence, demonstrating an association with BMD, dementia, or both.^{18,20,21} Baseline covariables included age, sex, education level (primary education, lower education, intermediate education, higher education), smoking status (never, former, current), systolic blood pressure (mm Hg), diastolic blood pressure (mm Hg), total cholesterol level (mmol/L), high-density lipoprotein cholesterol (mmol/L), triglycerides (mmol/L), body mass index (kg/m², calculated by weight [kg] divided by height [m] squared), measurements of physical activity, and chronic disorders (diabetes and stroke). For determining *APOE* genotype, a PCR was used in RS-I and a biallelic TaqMan assay (rs7412 and rs429358) was used on labeled DNA samples in both RS-II and RS-III. This study included the first 2 subcohorts (RS-I and RS-II). *APOE*- ϵ 4 allele represented carriership of at least 1 ϵ 4 allele. Participants were divided into 3 different groups: high genetic risk (ϵ 2 ϵ 4, ϵ 3 ϵ 4, or ϵ 4 ϵ 4), intermediate risk (ϵ 3 ϵ 3) or low risk (ϵ 2 ϵ 2 or ϵ 2 ϵ 3) for dementia.²²

Statistical Analysis

For baseline characteristics, normally distributed variables are described as mean \pm SD and non-normally distributed continuous variables as median (interquartile range) among women and men.

Cox proportional hazards models were used for investigating the association between BMD and dementia risk. Follow-up time started on the baseline date of bone scan and ended until the date of diagnosis of dementia, death, loss to follow-up, or January 1, 2020. Schoenfeld residuals were calculated for checking the proportional hazards assumption. And the proportional hazards assumptions were not violated if *p* values were above 0.05. We used Kaplan-Meier survival curves to map group differences in BMD and TBS tertiles for dementia. Cox proportional hazard models were adjusted for age, sex, *APOE* genotypes, education attainment, physical activity, smoking status, body mass index, systolic and diastolic blood

pressure, cholesterol level, high-density lipoprotein cholesterol, and history of chronic disorders (stroke and diabetes mellitus). Age and sex are 2 strong risk factors of low BMD because bone mineral loss is manifested after the age of 50 years or menopause^{23,24}; therefore, the tertile categories of BMD and TBS were derived by generating tertiles from the residuals of linear regression models adjusted for age (continuously) and sex. Effects of BMD were also assessed when expressed as per 1 SD decrease. Associations were determined by measuring the effects of each tertile or per 1 SD decrease of BMD at the femoral neck, the lumbar spine, and total body and TBS on the dementia risk.

As a consequence of the proportionality assumption of the Cox model being violated in some analyses, stratified Cox models by incremental epochs of follow-up time were used to examine how the aforementioned risk of incident dementia changed over follow-up duration (extending epochs, e.g., baseline to 5 years, baseline to 10 years, and baseline to more than 10 years). In addition, we stratified analyses by sex and *APOE*- ϵ 4 allele carriership (carrier vs noncarrier), which were suggested as possible effect modifiers.^{21,25,26}

A *p* value of <0.05 was considered statistically significant. Data analyses were performed using R version 3.6.0. Missing covariates were computed using predictive mean matching for numeric variables and logistic regression for binary variables using the MICE package.²⁷

Standard Protocol Approvals, Registrations, and Patient Consents

A written informed consent was provided before participants participated in the study and agreed to have their information acquired given by treating physicians. All authors could get access to the study data and are responsible for the data, analyses, and interpretation of results.

Data Availability

Data can be obtained by sending request toward the management team of the RS (datamanagement.ergo@erasmusmc.nl), which follows the protocol for approving data requests. To meet the requirements of privacy regulations and informed consent of the participants, data cannot be publicly available.

Results

Clinical Characteristics

As summarized in Table 1, among 3,651 participants (median age 72.3 \pm 10.0 years), 2,113 (57.9%) are women. During a median follow-up duration of 11.1 years, 688 (18.8%) developed incident dementia, of whom 528 (76.7%) developed AD.

BMD and Dementia Risk Over Incremental Epochs of Follow-up Duration

Throughout the whole follow-up period, lower BMD at the femoral neck (per SD decrease), not at other bone sites, was related to a higher risk of all-cause dementia (hazard ratio [HR]_{total follow-up} 1.12, 95% CI 1.02–1.23) and AD (HR_{total follow-up} 1.14,

Table 1 Baseline Characteristics of Participants in Longitudinal Analyses

	Men	Women	Total
N (%)	1,538 (42.1)	2,113 (57.9)	3,651 (100)
Follow-up, y	10.9 (4.3)	11.2 (2.2)	11.1 (2.9)
Age, y	72.3 (9.5)	72.3 (10.4)	72.3 (10.0)
Body mass index, kg/m², n (%)			
Normal 18.5–24.9	389 (25.3)	588 (27.8)	977 (26.8)
Underweight <18.5	4 (0.3)	19 (0.9)	23 (0.6)
Overweight 25–30	863 (56.1)	948 (44.9)	1,811 (49.6)
Obesity >30	282 (18.3)	558 (26.4)	840 (23.0)
Alcohol, g/d	12.1 (21.5)	2.9 (12.0)	7.1 (19.3)
Smoking, n (%)			
Never	237 (15.4)	916 (43.4)	1,153 (31.6)
Former	1,100 (71.5)	921 (43.6)	2,021 (55.4)
Current	201 (13.1)	276 (13.1)	477 (13.1)
Educational level, n (%)			
Primary	122 (7.9)	293 (13.9)	415 (11.4)
Low	472 (30.7)	1,162 (55.0)	1,634 (44.8)
Intermediate	602 (39.1)	528 (25.0)	1,130 (31.0)
High	342 (22.2)	130 (6.2)	472 (12.9)
Physical activity, h/mo	68.7 (53.3)	90.0 (56.7)	81.1 (55.4)
Systolic blood pressure, mm/Hg	147.0 (27.5)	150.0 (28.0)	148.5 (28.0)
Diastolic blood pressure, mm/Hg	80.5 (15.0)	79.0 (14.0)	80.0 (14.5)
Cholesterol, mmol/L	5.28 (1.23)	5.84 (1.24)	5.60 (1.28)
High-density lipoprotein cholesterol, mmol/L	1.24 (0.41)	1.51 (0.54)	1.39 (0.52)
Diabetes, n (%)	133 (8.6)	142 (6.7)	275 (7.5)
Stroke, n (%)	25 (1.6)	17 (0.8)	42 (1.2)
APOE-ε4, n (%)	390 (26.5)	527 (26.7)	917 (26.6)
Total body BMD, g/cm²	1.20 (0.13)	1.06 (0.14)	1.12 (0.17)
Femoral neck BMD, g/cm²	0.92 (0.18)	0.82 (0.17)	0.86 (0.19)
Lumbar spine BMD, g/cm²	1.21 (0.27)	1.04 (0.24)	1.10 (0.28)
TBS, mm⁻¹	1.33 (0.12)	1.25 (0.14)	1.28 (0.14)

Abbreviations: BMD = bone mineral density; TBS = trabecular bone score. Data presented as mean (SD) or median (interquartile range). Proportions of missing data: alcohol intake (2.1%), APOE genotype (5.6%), body mass index (1.5%), diabetes (5.1%), education attainment (1.6%), high-density lipoprotein (1.8%), physical activity (3.8%), serum total cholesterol (1.8%), and systolic and diastolic blood pressure (0.2%). Missing data were imputed using Bayesian linear regression for continuous variables, logistic regression for binary variables, and polytomous logistic regression for categorical variables with more than 2 subgroups.

95% CI 1.02–1.28) (Table 2). As summarized in eTable 1 (links.lww.com/WNL/C666), results were similar when we categorized individuals by BMD tertiles: the highest risks were observed for dementia and AD in the lowest group.

Within the first 10 years after baseline, associations were greatest between lower BMD (per SD decrease) and a higher risk of all-cause dementia (femoral neck BMD, HR_{0–10 years} 1.43; 95% CI 1.19–1.72; total body BMD, HR_{0–10 years} 1.22; 95% CI 1.00–1.47) and AD (femoral neck BMD, HR_{0–10 years} 1.52; 95% CI 1.20–1.92). The HRs for incident all-cause dementia comparing the lowest tertile of the femoral neck BMD, total body BMD, and TBS with the highest tertile were 2.03 (95% CI 1.39–2.96), 1.42 (95% CI 1.01–2.02), and 1.59 (95% CI 1.11–2.28) separately (Table 2). Similar results remained only between femoral neck BMD, TBS, and the risk of AD, which are listed in eTable 1 (links.lww.com/WNL/C666).

As summarized in Table 2 and eTable 1 (links.lww.com/WNL/C666), only BMD at the femoral neck was related to all-cause dementia occurrence over the first 5 years of the follow-up (HR_{0–5 years} 2.13; 95% CI 1.28–3.57, per SD decrease).

Kaplan-Meier Curves of Dementia-Free Survival by Levels of BMD

As presented in Figure 2 and eFigure 1 (links.lww.com/WNL/C666), within the first 5 years during the follow-up, the curves of dementia-free or AD-free probability were nearly overlapped at all tertile levels of the BMD, but the curve at the lowest tertile of the femoral neck BMD started to fall faster than that at the highest tertile later on. Similar temporal curve trends for dementia-free probability were also observed for the total body BMD and TBS, but not for the lumbar spine BMD.

Stratification

When stratified by sex and APOE-ε4 carriership, significant associations were found between lower femoral neck BMD (the lowest tertile vs the highest tertile) and a higher risk of all-cause dementia in men (HR 1.56; 95% CI 1.12–2.16), but not in women (HR 1.13; 95% CI 0.87–1.47); and in non-APOE-ε4 carriers (HR 1.36; 95% CI 1.04–1.76), but not in APOE-ε4 carriers (HR 1.16; 95% CI 0.84–1.60). Significant associations were also observed between low TBS and increased risk of dementia (Figure 3). Stratification for the HR estimates of AD was represented in eFigure 2 (links.lww.com/WNL/C666). Statistically significant interactions were observed between sex and low TBSs ($p = 0.02$) and between APOE-ε4 carriership and low TBSs ($p = 0.01$) (data not presented).

Discussion

In this study, low femoral neck and total body BMD and low TBS were associated with an increased risk of dementia. The associations were strongest in the first 10 years of follow-up.

Table 2 BMD and the Risk of Incident Dementia Stratified by Incremental Epochs of Follow-up Time^a

	0-5 y		0-10 y		Total follow-up	
	n/N	HR (95% CI)	n/N	HR (95% CI)	n/N	HR (95% CI)
Femoral neck BMD^b						
Highest tertile	8/1,195	1	49/1,195	1	201/1,195	1
Medium tertile	7/1,194	0.85 (0.26–2.73)	67/1,194	1.34 (0.91–1.98)	236/1,194	1.16 (0.96–1.42)
Lowest tertile	16/1,195	2.32 (0.84–6.44)	86/1,195	2.03 (1.39–2.96)	229/1,195	1.26 (1.03–1.54)
Per SD decrease	31/3,584	2.13 (1.28–3.57)	202/3,584	1.43 (1.19–1.72)	666/3,584	1.12 (1.02–1.23)
Lumbar spine BMD^b						
Highest tertile	10/1,203	1	64/1,203	1	224/1,203	1
Medium tertile	11/1,202	1.09 (0.41–2.91)	67/1,202	1.07 (0.74–1.54)	224/1,202	0.96 (0.79–1.17)
Lowest tertile	12/1,203	1.23 (0.47–3.20)	80/1,203	1.27 (0.89–1.80)	233/1,203	1.00 (0.82–1.21)
Per SD decrease	33/3,608	1.04 (0.69–1.56)	211/3,608	1.08 (0.93–1.27)	681/3,608	0.97 (0.89–1.05)
Total body BMD^b						
Highest tertile	12/1,211	1	68/1,211	1	227/1,211	1
Medium tertile	6/1,211	0.49 (0.16–1.46)	57/1,211	0.85 (0.58–1.24)	227/1,211	1.00 (0.83–1.22)
Lowest tertile	15/1,211	1.00 (0.39–2.56)	90/1,211	1.42 (1.01–2.02)	232/1,211	1.00 (0.82–1.22)
Per SD decrease	33/3,633	1.27 (0.77–2.08)	215/3,633	1.22 (1.00–1.47)	686/3,633	1.02 (0.92–1.14)
TBS^b						
Highest tertile	10/1,191	1	59/1,191	1	210/1,191	1
Medium tertile	12/1,191	2.47 (0.94–6.52)	74/1,191	1.55 (1.08–2.21)	226/1,191	1.21 (0.99–1.47)
Lowest tertile	11/1,191	2.04 (0.73–5.68)	77/1,191	1.59 (1.11–2.28)	236/1,191	1.19 (0.98–1.45)
Per SD decrease	33/3,573	1.37 (0.92–2.04)	210/3,573	1.16 (1.00–1.35)	672/3,573	1.04 (0.95–1.14)

Abbreviations: BMD = bone mineral density; HR = hazard ratio; TBS = trabecular bone score.

Cox regressions were adjusted for age, sex, *APOE* genotype, education attainment, physical activity, smoking status, body mass index, systolic and diastolic blood pressure, total cholesterol levels, high-density lipoprotein cholesterol levels, and history of comorbidities (stroke and diabetes mellitus).

Bold font corresponds to significant *p* value threshold.

^a Follow-up time started after BMD scans at baseline.

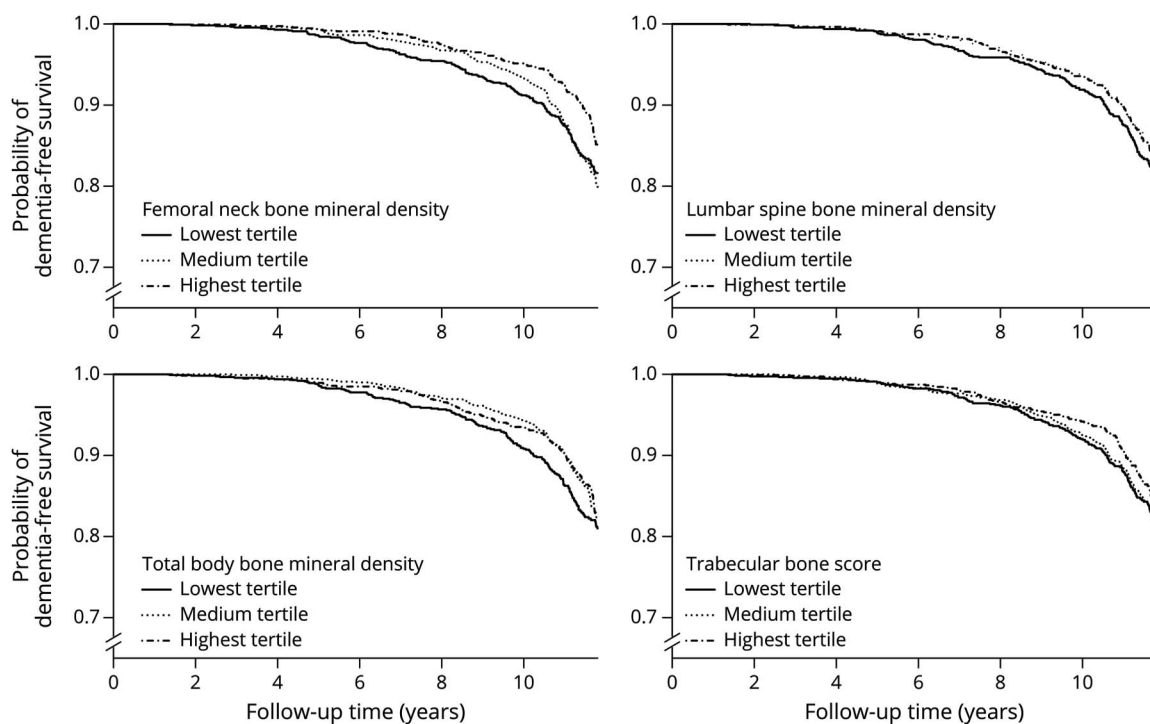
^b The tertile categories of BMD and TBS were derived by generating tertiles from the residuals of linear regression models adjusted for age (continuously) and sex. The highest tertile was considered as the reference group.

Participants with low BMD at the femoral neck had an increased risk of dementia^{28,29} in both this study and previous prospective studies. It has also been demonstrated that participants with low femoral neck BMD may also experience structural brain changes, including declined white matter volume, increased white matter hyperintensity volume, occurrence of silent brain infarction, and progression of parenchymal atrophy.^{30,31} A small cross-sectional study found that low total body BMD was common in the earliest clinical stages of AD and was related to brain atrophy and memory decline,³² which was supported by the significant association between total body BMD and dementia risk in this study. Potential pathophysiologic mechanisms behind low BMD being a prodrome of dementia might include the effect of β -amyloid on suppressing osteoblast proliferation and enhancing osteoclast activity^{33,34} and/or impact of systemic Wnt/ β -catenin signaling deficits on impeding osteoblast

differentiation and bone formation.^{35,36} Apart from the abovementioned pathway, bone-derived proteins, such as osteopontin, osteocalcin, and sclerostin, might also affect both bone loss and dementia progression.³⁷ Moreover, the loss of cognition preceding dementia inevitably influences quality of life among older individuals by modifying nutrition intake and self-care ability, which further accelerates the loss of BMD and increases fracture risk with aging.^{38,39}

Concerning scarcity of evidence on the association between bone microarchitecture and dementia, an inverse association was observed between TBS and dementia risk. Low TBS was associated with a weak and less fracture-resistant microarchitecture¹⁹ and, consequently, also with fractures.¹¹ As the disease progresses, participants with subclinical dementia could experience changes in body composition⁴⁰ and confront with an increased risk of fracture,⁴¹ which was reported

Figure 2 Kaplan-Meier Curves of Dementia-Free Survival at Different Levels of Bone Mineral Density at Each Site



as an independent risk of dementia.⁴² This suggests that low TBS might occur as a prodromal feature of dementia. Further evidence from prospective studies is warranted to demonstrate the causality of the association.

Our findings did not support a link between lumbar spine bone density and dementia risk, which contrasts with findings of prior studies.^{43,44} Low BMD at the lumbar spine was associated with cognitive decline over a 3-year follow-up period in a Korean middle-aged community-dwelling population.⁴³ Moreover, a Chinese cohort study (n = 946) reported an association between low lumbar spine BMD and increased risks of AD and the conversion from mild cognitive impairment to the onset of dementia.⁴⁴ Different findings might result from relatively small sample size, a short follow-up time, or cross-sectional design of previous studies.

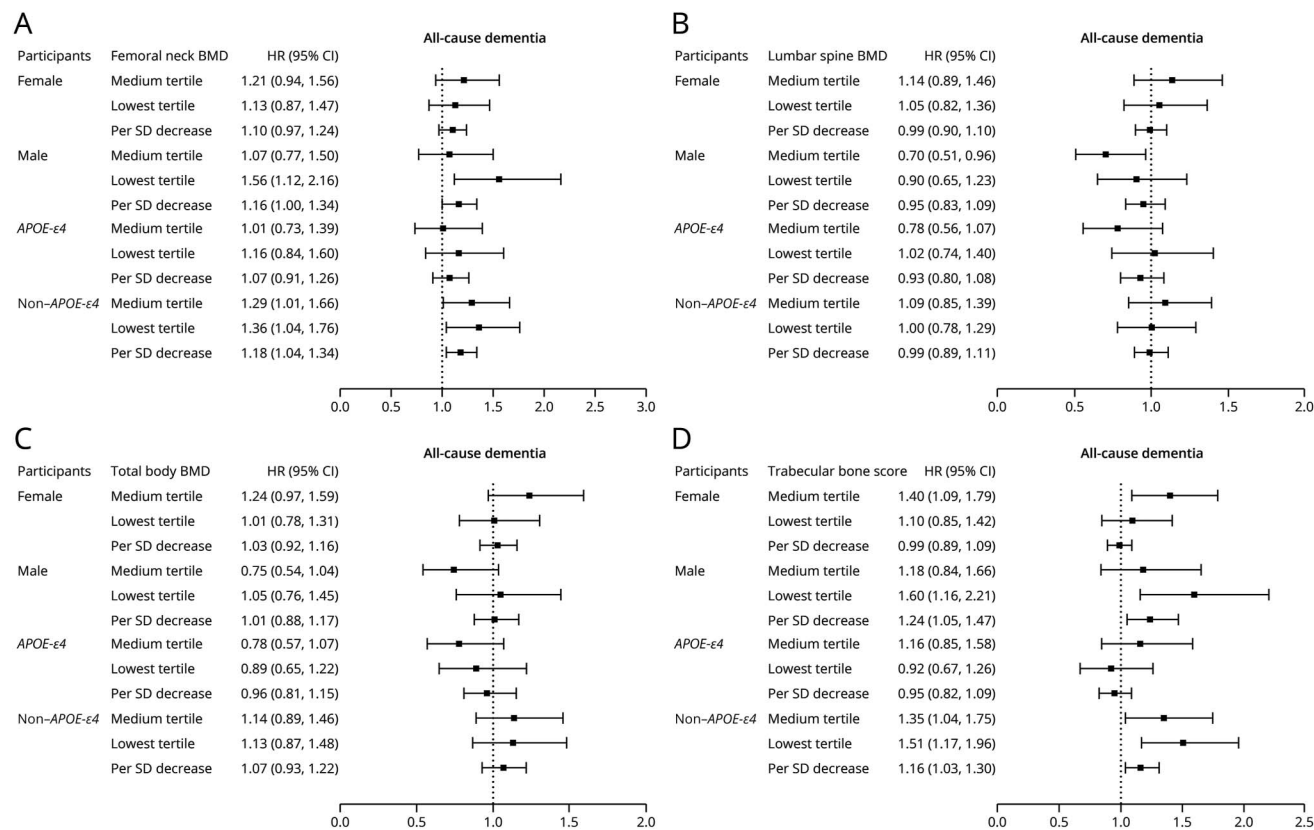
Our study shows that femoral neck BMD is the most robustly associated factor with incident dementia. There are biological differences between skeletal sites, which may explain these differences in effect. Bones within the lumbar spine consist predominantly of trabecular bone with a thin sheet of cortical bone surrounding them. By contrast, long bones, similar to those of the femur, are comprised predominantly of a thicker sheet of cortical bone and a thin inner layer of trabecular bone. Cortical and trabecular bone differ in their material and mechanical and functional properties. Thus, changes to cortical BMD could affect dementia risk more strongly than trabecular BMD, and this could be reflected in the differences in associations between

sites. Furthermore, BMD of the femoral neck and total hip has been shown to decrease more rapidly with age in comparison with other skeletal sites.^{45,46} Risk factors, such as poor diet and physical activity, may affect these bones differentially, regarding their composition and rate of decline, which in turn may explain the differential associations with dementia. However, the exact mechanism remains unclear and should be the focus of future study.

Our study added extra knowledge to previous findings that associations change with time, with the strength of the effect decreasing with increasing follow-up time. This suggests that total BMD and TBS might occur as prodromal features instead of causes of dementia and related toxic protein accumulation in the brain. In other words, persons with subclinical incipient dementia may have poor bone health due to the dementia process instead of vice versa. Alternatively, participants with a low level of BMD are at a high risk of falls and other mortalities, especially with a longer follow-up duration, and thus, death as a competing risk may also affect the associations. In addition, the results in the first 5 years of follow-up would be unstable. The small number would primarily affect the power of these analyses, reflected in wider CIs. The effect size itself would not necessarily be affected. Nevertheless, given the limited number of cases with dementia, the interpretation of this part result should be taken with caution.

In contrast to the finding of a prior study,²⁸ our study suggested that low BMD increased the risk of dementia in male,

Figure 3 Associations of Low BMD of the Total Body (A), the Femoral Neck (B), the Lumbar Spine (C), and Trabecular Bone (D) Scores With the Risk of All-Cause Dementia, Stratified by Sex and *APOE-ε4* Allele Carriership



Participants in the highest tertile of BMD were regarded as the reference group (hidden). Estimated HRs were obtained after adjustment of (if applicable) age, sex, *APOE* genotype, education attainment, physical activity, smoking status, body mass index, systolic and diastolic blood pressure, total cholesterol levels, high-density lipoprotein cholesterol levels, and history of comorbidities (stroke and diabetes mellitus). *The tertile categories of BMD and trabecular bone score were derived by generating tertiles from the residuals of linear regression models adjusted for age (continuously) and sex. The highest tertile was considered as the reference group. BMD = bone mineral density; HR = hazard ratio.

but not in female individuals. A previous study²⁸ reported an increased risk of AD only among women with low BMD at the femoral neck, which indicates the potentially protective effect of estrogen on mediating the negative association through inhibiting bone resorption and deterring neuronal apoptosis, atherosclerosis, and oxidative stress.^{47,48} Although the risk of AD decreased after taking estrogen replacement,⁴⁹ this was contradicted by another study.⁵⁰ In addition, little evidence supports sex differences in the associations of low BMD with brain atrophy.³⁰ Future research is therefore needed to explore these hypotheses further.

The aim of our study was not necessarily etiologic, but instead to demonstrate the pattern of association. Indeed, we do not feel that BMD per se is causally related to dementia. Unraveling such etiologic link could, for instance, be a topic of study in Mendelian Randomization studies. Nevertheless, as an indicator of dementia risk, intervening in BMD may improve clinical care of these persons, especially considering the multicomorbidities and polypharmacy that are highly prevalent in this group.

The major important strength of our study is the relatively long follow-up time (mean 11.1 ± 2.9 years) and sufficient incident cases of dementia (n = 688). One limitation of this study lies in the weakness in determining the causality of associations concerning inherent restraints of observational study, including unmeasured confounders such as vitamin D and K and osteoporosis medications, although a large number of covariables were adjusted for in models. Future studies are warranted to assess the effect of these factors on the association. In addition, another weakness of this study is the violation of the proportionality assumption in some cox models. However, we performed stratification by incremental epochs of follow-up duration extending from the baseline. Finally, because our participants were primarily of European origin, with a mean age older than 70 years at baseline, this might restrict the extrapolation of our findings to other populations/ethnicities and younger populations.

In conclusion, participants with low femoral neck and total body BMD and low TBS were more likely to develop dementia. Further studies should focus on the predictive ability of BMD for dementia.

Acknowledgment

The authors thank the participants of the Rotterdam Study, research assistants, the general practitioners, hospitals, and pharmacies in Rotterdam.

Study Funding

The Rotterdam Study is sponsored by the Erasmus Medical Center and Erasmus University Rotterdam, The Netherlands Organization for Scientific Research (I), The Netherlands Organization for Health Research and Development (ZonMW), the Research Institute for Diseases in the Elderly (RIDE), The Netherlands Genomics Initiative, the Ministry of Education, Culture and Science, the Ministry of Health, Welfare and Sports, the European Commission (DG XII), and the Municipality of Rotterdam. Further support was obtained from the Netherlands Consortium for Healthy Ageing. This study was partly performed as part of the Netherlands Consortium of Dementia Cohorts (NCDC), which also receives funding in the context of Deltaplan Dementie from ZonMW Memorabel (project number 73305095005) and Alzheimer Nederland. Further funding was obtained through the Stichting Erasmus Trustfonds (grant number 97030.2021.101.430/057/RB). Moreover, L. Oei is funded by an Erasmus MC fellowship grant.

Disclosure

The authors report no disclosures relevant to the manuscript. Go to Neurology.org/N for full disclosures.

Publication History

Received by *Neurology* October 3, 2022. Accepted in final form February 9, 2023. Submitted and externally peer reviewed. The handling editor was Associate Editor Linda Hershey, MD, PhD, FAAN.

Appendix Authors

Name	Location	Contribution
Tian Xiao, MD	Department of Epidemiology, Erasmus MC University Medical Center Rotterdam, the Netherlands	Drafting/revision of the article for content, including medical writing for content; major role in the acquisition of data; study concept or design; and analysis or interpretation of data
Samuel Ghatan, MSc	Department of Epidemiology, and Department of Internal Medicine, Erasmus MC University Medical Center Rotterdam, the Netherlands	Drafting/revision of the article for content, including medical writing for content; major role in the acquisition of data; and analysis or interpretation of data
Sanne S. Mooldijk, MD	Department of Epidemiology, Erasmus MC University Medical Center Rotterdam, the Netherlands	Drafting/revision of the article for content, including medical writing for content; major role in the acquisition of data
Katerina Trajanoska, MD, PhD	Department of Epidemiology, and Department of Internal Medicine, Erasmus MC University Medical Center Rotterdam, the Netherlands	Drafting/revision of the article for content, including medical writing for content; major role in the acquisition of data

Appendix (continued)

Name	Location	Contribution
Ling Oei, MD, PhD	Department of Internal Medicine, Erasmus MC University Medical Center Rotterdam, the Netherlands	Major role in the acquisition of data; study concept or design
M. Medina Gomez, PhD	Department of Internal Medicine, Erasmus MC University Medical Center Rotterdam, the Netherlands	Major role in the acquisition of data
M. Kamran Ikram, MD, PhD	Department of Epidemiology, and Department of Neurology, Erasmus MC University Medical Center Rotterdam, the Netherlands	Drafting/revision of the article for content, including medical writing for content; study concept or design
Fernando Rivadeneira, PhD	Department of Internal Medicine, Erasmus MC University Medical Center Rotterdam, the Netherlands	Drafting/revision of the article for content, including medical writing for content; major role in the acquisition of data; study concept or design; and analysis or interpretation of data
M. Arfan Ikram, MD, PhD	Department of Epidemiology, Erasmus MC University Medical Center Rotterdam, the Netherlands	Drafting/revision of the article for content, including medical writing for content; major role in the acquisition of data; study concept or design; and analysis or interpretation of data

References

1. Shah H, Albanese E, Duggan C, et al. Research priorities to reduce the global burden of dementia by 2025. *Lancet Neurol*. 2016;15(12):1285-1294.
2. Alzheimer's Disease International. *World Alzheimer Report 2015: The Global Impact of Dementia*. Alzheimer's Disease International; 2015.
3. Browne J, Edwards DA, Rhodes KM, Brimicombe DJ, Payne RA. Association of comorbidity and health service usage among patients with dementia in the UK: a population-based study. *BMJ Open*. 2017;7(3):e012546.
4. Xu H, Garcia-Ptacek S, Trevisan M, et al. Kidney function, kidney function decline, and the risk of dementia in older adults: a registry-based study. *Neurology*. 2021;96(24):e2956-e2965.
5. Frame G, Bretland KA, Dengler-Criss CM. Mechanistic complexities of bone loss in Alzheimer's disease: a review. *Connect Tissue Res*. 2020;61(1):4-18.
6. Kostev K, Hadji P, Jacob L. Impact of osteoporosis on the risk of dementia in almost 60,000 patients followed in general practices in Germany. *J Alzheimers Dis*. 2018;65(2):401-407.
7. Kalmijn S, Mehta KM, Pols HAP, Hofman A, Drexhage HA, Breteler MMB. Sub-clinical hyperthyroidism and the risk of dementia. The Rotterdam study. *Clin Endocrinol (Oxf)*. 2000;53(6):733-737.
8. Friedman SM, Menzies IB, Bukata SV, Mendelson DA, Kates SL. Dementia and hip fractures: development of a pathogenic framework for understanding and studying risk. *Geriatr Orthop Surg Rehabil*. 2010;1(2):52-62.
9. Frenkel B, Hong A, Baniwal SK, et al. Regulation of adult bone turnover by sex steroids. *J Cell Physiol*. 2010;224(2):305-310.
10. Kipen E, Helme RD, Wark JD, Flicker L. Bone density, vitamin D nutrition, and parathyroid hormone levels in women with dementia. *J Am Geriatr Soc*. 1995;43(10):1088-1091.
11. Shevroja E, Cafarelli FP, Guglielmi G, Hans D. DXA parameters, trabecular bone score (TBS) and bone mineral density (BMD), in fracture risk prediction in endocrine-mediated secondary osteoporosis. *Endocrine*. 2021;74(1):20-28.
12. Bruyere O, Varela AR, Adams S, et al. Loss of hip bone mineral density over time is associated with spine and hip fracture incidence in osteoporotic postmenopausal women. *Eur J Epidemiol*. 2009;24(11):707-712.
13. Lary CW, Rosen CJ, Kiel DP. Osteoporosis and dementia: establishing a link. *J Bone Miner Res*. 2021;36(11):2103-2105.
14. Cosman F, de Beur SJ, LeBoff MS, et al. Clinician's guide to prevention and treatment of osteoporosis. *Osteoporos Int*. 2014;25(10):2359-2381.
15. Hans D, Goertzen AL, Krieg MA, Leslie WD. Bone microarchitecture assessed by TBS predicts osteoporotic fractures independent of bone density: the Manitoba study. *J Bone Miner Res*. 2011;26(11):2762-2769.
16. Harvey NC, Gluer CC, Binkley N, et al. Trabecular bone score (TBS) as a new complementary approach for osteoporosis evaluation in clinical practice. *Bone*. 2015;78:216-224.

17. Ikram MA, Brusselle G, Ghanbari M, et al. Objectives, design and main findings until 2020 from the Rotterdam Study. *Eur J Epidemiol*. 2020;35(5):483-517.
18. Burger H, de Laet CEDH, van Daele PLA, et al. Risk factors for increased bone loss in an elderly population: the Rotterdam Study. *Am J Epidemiol*. 1998;147(9):871-879.
19. Pothuau L, Barthe N, Krieg MA, Mehens N, Carceller P, Hans D. Evaluation of the potential use of trabecular bone score to complement bone mineral density in the diagnosis of osteoporosis: a preliminary spine BMD-matched, case-control study. *J Clin Densitom*. 2009;12(2):170-176.
20. Baumgart M, Snyder HM, Carrillo MC, Fazio S, Kim H, Johns H. Summary of the evidence on modifiable risk factors for cognitive decline and dementia: a population-based perspective. *Alzheimers Dement*. 2015;11(6):718-726.
21. Rocca WA, Mielke MM, Vemuri P, Miller VM. Sex and gender differences in the causes of dementia: a narrative review. *Maturitas*. 2014;79(2):196-201.
22. Licher S, Ahmad S, Karamujić-Čomić H, et al. Genetic predisposition, modifiable-risk-factor profile and long-term dementia risk in the general population. *Nat Med*. 2019;25(9):1364-1369.
23. Wishart JM, Need AG, Horowitz M, Morris HA, Nordin BE. Effect of age on bone density and bone turnover in men. *Clin Endocrinol (Oxf)*. 1995;42(2):141-146.
24. Greendale GA, Sowers M, Han W, et al. Bone mineral density loss in relation to the final menstrual period in a multiethnic cohort: results from the Study of Women's Health Across the Nation (SWAN). *J Bone Miner Res*. 2012;27(1):111-118.
25. Peter I, Crosier MD, Yoshida M, et al. Associations of APOE gene polymorphisms with bone mineral density and fracture risk: a meta-analysis. *Osteoporos Int*. 2011;22(4):1199-1209.
26. Bakulski KM, Vadari HS, Faul JD, et al. Cumulative genetic risk and APOE ε4 are independently associated with dementia status in a multiethnic, population-based cohort. *Neurol Genet*. 2021;7(2):e576.
27. Zhang Z. Multiple imputation with multivariate imputation by chained equation (MICE) package. *Ann Transl Med*. 2016;4(2):30.
28. Tan ZS, Seshadri S, Beiser A, et al. Bone mineral density and the risk of Alzheimer disease. *Arch Neurol*. 2005;62(1):107-111.
29. Zhou R, Deng J, Zhang M, Zhou HD, Wang YJ. Association between bone mineral density and the risk of Alzheimer's disease. *J Alzheimers Dis*. 2011;24(1):101-108.
30. Minn YK, Suk SH, Do SY. Osteoporosis as an independent risk factor for silent brain infarction and white matter changes in men and women: the PRESENT project. *Osteoporos Int*. 2014;25(10):2465-2469.
31. Bae IS, Kim JM, Cheong JH, Ryu JI, Han MH. Association between bone mineral density and brain parenchymal atrophy and ventricular enlargement in healthy individuals. *Aging (Albany NY)*. 2019;11(19):8217-8238.
32. Loskutova N, Honea RA, Vidoni ED, Brooks WM, Burns JM. Bone density and brain atrophy in early Alzheimer's disease. *J Alzheimers Dis*. 2009;18(4):777-785.
33. Xia WF, Jung JU, Shun C, et al. Swedish mutant APP suppresses osteoblast differentiation and causes osteoporotic deficit, which are ameliorated by N-acetyl-L-cysteine. *J Bone Miner Res*. 2013;28(10):2122-2135.
34. Li S, Liu B, Zhang L, Rong L. Amyloid beta peptide is elevated in osteoporotic bone tissues and enhances osteoclast function. *Bone*. 2014;61:164-175.
35. Sen B, Styner M, Xie Z, Case N, Rubin CT, Rubin J. Mechanical loading regulates NFATc1 and beta-catenin signaling through a GSK3beta control node. *J Biol Chem*. 2009;284(50):34607-34617.
36. Krishnan V, Bryant HU, Macdougald OA. Regulation of bone mass by Wnt signaling. *J Clin Invest*. 2006;116(5):1202-1209.
37. Yuan J, Meloni BP, Shi T, et al. The potential influence of bone-derived modulators on the progression of Alzheimer's disease. *J Alzheimers Dis*. 2019;69(1):59-70.
38. Teng E, Tassniyom K, Lu PH. Reduced quality-of-life ratings in mild cognitive impairment: analyses of subject and informant responses. *Am J Geriatr Psychiatry*. 2012;20(12):1016-1025.
39. Bliuc D, Tran T, Adachi JD, et al. Cognitive decline is associated with an accelerated rate of bone loss and increased fracture risk in women: a prospective study from the Canadian Multicentre Osteoporosis Study. *J Bone Miner Res*. 2021;36(11):2106-2115.
40. Murata S, Ono R, Sugimoto T, Toba K, Sakurai T. Functional decline and body composition change in older adults with Alzheimer disease: a retrospective cohort study at a Japanese memory clinic. *Alzheimer Dis Assoc Disord*. 2021;35(1):36-43.
41. Zhao Y, Shen L, Ji HF. Alzheimer's disease and risk of hip fracture: a meta-analysis study. *ScientificWorldJournal*. 2012;2012:872173.
42. Tsai CH, Chuang CS, Hung CH, et al. Fracture as an independent risk factor of dementia: a nationwide population-based cohort study. *Medicine (Baltimore)*. 2014;93(26):e188.
43. Kang HG, Park HY, Ryu HU, Suk SH. Bone mineral loss and cognitive impairment: the PRESENT project. *Medicine (Baltimore)*. 2018;97(41):e12755.
44. Zhou R, Zhou H, Rui L, Xu J. Bone loss and osteoporosis are associated with conversion from mild cognitive impairment to Alzheimer's disease. *Curr Alzheimer Res*. 2014;11(7):706-713.
45. Berger C, Langsetmo L, Joseph L, et al. Change in bone mineral density as a function of age in women and men and association with the use of antiresorptive agents. *CMAJ*. 2008;178(13):1660-1668.
46. Boyanov MA. Whole body and regional bone mineral content and density in women aged 20-75 years. *Acta Endocrinol (Buchar)*. 2016;12(2):191-196.
47. Jilka RL, Hangoc G, Girasole G, et al. Increased osteoclast development after estrogen loss: mediation by interleukin-6. *Science*. 1992;257(5066):88-91.
48. Fox M, Berzuini C, Knapp LA. Cumulative estrogen exposure, number of menstrual cycles, and Alzheimer's risk in a cohort of British women. *Psychoneuroendocrinology*. 2013;38(12):2973-2982.
49. LeBlanc ES, Janowsky J, Chan BKS, Nelson HD. Hormone replacement therapy and cognition: systematic review and meta-analysis. *JAMA*. 2001;285(11):1489-1499.
50. Seshadri S, Zornberg GL, Derby LE, Myers MW, Jick H, Drachman DA. Postmenopausal estrogen replacement therapy and the risk of Alzheimer disease. *Arch Neurol*. 2001;58(3):435-440.

Neurology®

Association of Bone Mineral Density and Dementia: The Rotterdam Study
Tian Xiao, Samuel Ghatan, Sanne S. Mooldijk, et al.
Neurology 2023;100:e2125-e2133 Published Online before print March 22, 2023
DOI 10.1212/WNL.0000000000207220

This information is current as of March 22, 2023

Updated Information & Services	including high resolution figures, can be found at: http://n.neurology.org/content/100/20/e2125.full
References	This article cites 49 articles, 6 of which you can access for free at: http://n.neurology.org/content/100/20/e2125.full#ref-list-1
Subspecialty Collections	This article, along with others on similar topics, appears in the following collection(s): All Cognitive Disorders/Dementia http://n.neurology.org/cgi/collection/all_cognitive_disorders_dementia All epidemiology http://n.neurology.org/cgi/collection/all_epidemiology All Imaging http://n.neurology.org/cgi/collection/all_imaging Alzheimer's disease http://n.neurology.org/cgi/collection/alzheimers_disease Cohort studies http://n.neurology.org/cgi/collection/cohort_studies
Permissions & Licensing	Information about reproducing this article in parts (figures, tables) or in its entirety can be found online at: http://www.neurology.org/about/about_the_journal#permissions
Reprints	Information about ordering reprints can be found online: http://n.neurology.org/subscribers/advertise

Neurology® is the official journal of the American Academy of Neurology. Published continuously since 1951, it is now a weekly with 48 issues per year. Copyright © 2023 The Author(s). Published by Wolters Kluwer Health, Inc. on behalf of the American Academy of Neurology. All rights reserved. Print ISSN: 0028-3878. Online ISSN: 1526-632X.

