

# Determinants of Perivascular Spaces in the General Population

## A Pooled Cohort Analysis of Individual Participant Data

Tavia E. Evans, PhD,\* Maria J. Knol, BSc,\* Petra Schwingenschuh, MD, Katharina Wittfeld, PhD, Saima Hilal, MD, PhD, M. Arfan Ikram, MD PhD, Florian Dubost, PhD, Kimberlin M. H. van Wijnen, MSc, Petra Katschnig, MD, Pinar Yilmaz, MD, Marleen de Bruijne, PhD, Mohamad Habes, PhD, Christopher Chen, MD, Sönke Langer, PhD, Henry Völzke, MD, M. Kamran Ikram, MD PhD, Hans J. Grabe, MD, Reinhold Schmidt, MD, Hieab H.H. Adams, MD,† and Meike W. Vernooij, PhD, MD†

*Neurology*® 2023;100:e107-e122. doi:10.1212/WNL.0000000000201349

### Abstract

#### Background and Objectives

Perivascular spaces (PVS) are emerging markers of cerebral small vessel disease (CSVD), but research on their determinants has been hampered by conflicting results from small single studies using heterogeneous rating methods. In this study, we therefore aimed to identify determinants of PVS burden in a pooled analysis of multiple cohort studies using 1 harmonized PVS rating method.

#### Methods

Individuals from 10 population-based cohort studies with adult participants from the Uniform Neuro-Imaging of Virchow-Robin Spaces Enlargement consortium and the UK Biobank were included. On MRI scans, we counted PVS in 4 brain regions (mesencephalon, hippocampus, basal ganglia, and centrum semiovale) according to a uniform and validated rating protocol, both manually and automated using a deep learning algorithm. As potential determinants, we considered demographics, cardiovascular risk factors, *APOE* genotypes, and other imaging markers of CSVD. Negative binomial regression models were used to examine the association between these determinants and PVS counts.

#### Results

In total, 39,976 individuals were included (age range 20–96 years). The average count of PVS in the 4 regions increased from the age 20 years (0–1 PVS) to 90 years (2–7 PVS). Men had more mesencephalic PVS (OR [95% CI] = 1.13 [1.08–1.18] compared with women), but less hippocampal PVS (0.82 [0.81–0.83]). Higher blood pressure, particularly diastolic pressure, was associated with more PVS in all regions (ORs between 1.04–1.05). Hippocampal PVS showed higher counts with higher high-density lipoprotein cholesterol levels (1.02 [1.01–1.02]), glucose levels (1.02 [1.01–1.03]), and *APOE* ε4-alleles (1.02 [1.01–1.04]). Furthermore, white matter hyperintensity volume and presence of lacunes were associated with PVS in multiple regions, but most strongly with the basal ganglia (1.13 [1.12–1.14] and 1.10 [1.09–1.12], respectively).

\*These authors contributed equally as first authors.

†These authors contributed equally as senior authors.

From the Departments of Clinical Genetics (T.E.E., M.J.K., H.H.H.A.), Radiology and Nuclear Medicine (T.E.E., F.D., K.M.H.W., P.Y., M.B., H.H.H.A., M.W.V.), Epidemiology (M.J.K., M.A.I., P.Y., M.K.I., M.W.V.), and Neurology (M.K.I.), Erasmus MC, Rotterdam, the Netherlands; Department of Neurology (P.S., P.K., R.S.), Medical University of Graz, Austria; German Center for Neurodegenerative Diseases (DZNE) (K.W., M.H., H.J.G.), Site Rostock/Greifswald; Department of Psychiatry and Psychotherapy (K.W., H.J.G.) and Institute of Diagnostic Radiology and Neuroradiology (S.L.), University Medicine Greifswald, Germany; Department of Pharmacology (S.H., C.C.), National University of Singapore; Memory Aging & Cognition Centre (MACC) (S.H., C.C., M.K.I.), National University Health System, Singapore; Saw Swee Hock School of Public Health (S.H.), National University of Singapore; Department of Biomedical Data Sciences (F.D.), Stanford University, CA; J. Philip Kistler Stroke Research Center (P.Y.), Department of Neurology, Massachusetts General Hospital, Harvard Medical School, Boston; The Machine Learning Section (M.B.), Department of Computer Science, University of Copenhagen, Denmark; Neuroimage Analytics Laboratory (NAL) and the Biggs Institute Neuroimaging Core (BINC) (M.H.), Glenn Biggs Institute for Alzheimer's and Neurodegenerative Diseases, University of Texas Health Science Center San Antonio (UTHSCSA), TX; and Latin American Brain Health (BrainLat) (H.H.H.A.), Universidad Adolfo Ibáñez, Santiago, Chile.

Go to [Neurology.org/N](https://www.neurology.org/N) for full disclosures. Funding information and disclosures deemed relevant by the authors, if any, are provided at the end of the article.

The article processing charge was funded by the authors.

This is an open access article distributed under the terms of the Creative Commons Attribution License 4.0 (CC BY), which permits unrestricted use, distribution, and reproduction in any medium, provided the original work is properly cited.

#### Correspondence

Dr. Adams  
h.adams@erasmusmc.nl

#### RELATED ARTICLE



#### Editorial

Perivascular Spaces: An Exciting Research Frontier in Cerebral Small Vessel Disease

Page 53

#### MORE ONLINE



#### CME Course

[NPub.org/cmelist](https://www.npub.org/cmelist)

## Glossary

**ASPS** = Austrian Stroke Prevention Study; **BMI** = body mass index; **CSVD** = cerebral small vessel disease; **EDIS** = Epidemiology of Dementia in Singapore; **FLAIR** = fluid-attenuated inversion recovery; **HDL** = high-density lipoproteins; **ICC** = intraclass correlation coefficient; **ICV** = intracranial volume; **PVS** = perivascular spaces; **RS** = Rotterdam Study; **SHIP** = Study of Health in Pomerania; **UKB** = UK Biobank; **WM** = white matter; **WMH** = WM hyperintensity.

## Discussion

Various factors are associated with the burden of PVS, in part regionally specific, which points toward a multifactorial origin beyond what can be expected from PVS-related risk factor profiles. This study highlights the power of collaborative efforts in population neuroimaging research.

Perivascular spaces (PVS) are fluid-filled spaces encapsulating penetrating brain vessels. PVS are suggested to be vital for extracellular waste removal within the movement and draining of fluid in the brain. These PVS can dilate so that they become visible on MRI as spaces with signal intensities similar to that of CSF. Such PVS can occur throughout the brain but are more often seen in the white matter (WM) and deep gray matter.<sup>1</sup> These regional differences are believed to be partly due to morphological factors, such as regional differences in the composition of membranes enclosing PVS,<sup>2</sup> and the branching and caliber changes of penetrating vessels.<sup>3</sup> Besides these morphological factors, however, it is believed that PVS in various locations might reflect different etiologies.

Although PVS were originally believed to be an insignificant finding, they have more recently been linked to normal aging<sup>4</sup> but also to neurologic disorders, including stroke, cerebral small vessel disease (CSVD),<sup>5-9</sup> Alzheimer disease,<sup>10,11</sup> migraine,<sup>12</sup> and multiple sclerosis.<sup>13,14</sup> Reflecting the variety of associated diseases, studies have emerged on a broad range of PVS determinants. A major focus has been on aging, cardiovascular risk factors, and MRI markers of CSVD.<sup>1,3,5,8,15-22</sup> In addition, some studies have investigated the relation with inflammation markers, cerebral amyloid angiopathy, and CSF biomarkers.<sup>6,23,24</sup> Recent exploration into the genomics of PVS has also unveiled interesting insight into regional variabilities and genetic overlap with neurodegenerative diseases.<sup>25,26</sup> However, previous studies have used heterogeneous methods to assess PVS, combined with often small samples, resulting in conflicting findings that are difficult to interpret. Furthermore, most studies only reported on 1 or 2 regions, mainly the basal ganglia and WM. The mesencephalon and, to a lesser extent, the hippocampus are generally absent from rating scales despite frequently containing PVS. Finally, most research has not compared results across different ethnicities.

Here, we investigated potential determinants of PVS in 4 brain regions, namely mesencephalon, hippocampus, basal ganglia, and centrum semiovale. We performed a pooled analysis of 10 population-based cohort studies with almost 40,000 individuals, all applying a uniform and validated rating method or an automated detection algorithm based on the

aforementioned rating method,<sup>27-29</sup> and examined associations of demographic factors, cardiovascular risk factors, APOE genotypes, and MRI markers with region-specific PVS burden. Furthermore, we performed stratification on self-reported ethnicity to perform an initial exploration into whether these associations differed across ethnic groups. We hypothesized differential associations between potential PVS determinants and PVS counts across different brain regions.

## Methods

A schematic overview of this study is presented in Figure 1.

### Study Population

This study was performed as part of the Uniform Neuro-Imaging of Virchow-Robin Spaces Enlargement consortium, a collaboration between population-based cohort studies, complemented by the UK Biobank (UKB).<sup>30,31</sup> This study included subjects from the Austrian Stroke Prevention Study (ASPS), the ASPS Family study (ASPS-Family), the Epidemiology of Dementia in Singapore study (EDIS Chinese and EDIS Malay), the Rotterdam Study (RS1, RS2, and RS3),<sup>32,33</sup> the Study of Health in Pomerania study (SHIP and SHIP-Trend), and the UKB.<sup>31</sup> More detailed information on these studies is presented in Table 1 and eTable 1 ([links.lww.com/WNL/C400](https://links.lww.com/WNL/C400)).

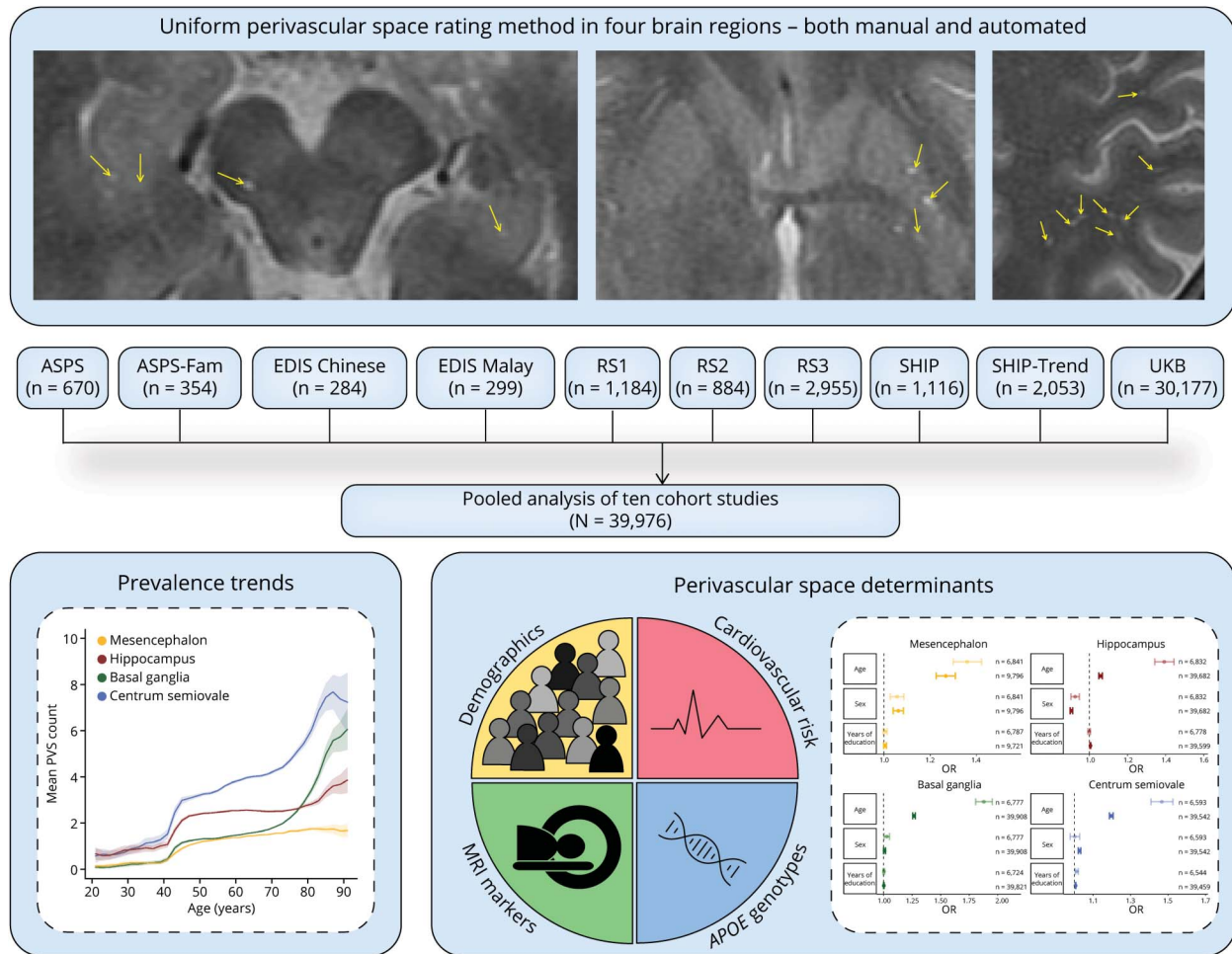
### Standard Protocol Approvals, Registrations, and Patient Consents

The individual studies have been approved by their local institutional review boards or ethics committees (Supplementary Information). Written informed consent was obtained from all participants.

### Image Acquisition

Various MRI scanners and protocols were used to acquire images, as previously described.<sup>30,34</sup> In brief, the MRI field strength in ASPS-family, EDIS, and UKB was 3T, whereas all other studies used 1.5T. All studies had T1-weighted, T2-weighted, and fluid-attenuated inversion recovery (FLAIR) sequences, except for the UKB, SHIP, and SHIP-Trend, which did not have T2-weighted sequences available. The slice

**Figure 1** Overview Figure Showing the Design of This Study



Abbreviations: ASPS = Austrian Stroke Prevention Study; ASPS-Fam = Austrian Stroke Prevention Family Study; EDIS = Epidemiology of Dementia in Singapore; RS = Rotterdam Study; SHIP = Study of Health in Pomerania; UKB = UK Biobank.

thickness of the primary rating sequence ranged between 1.0 and 5.5 mm. More detailed information on MRI scanners and protocols is presented in eTable 2 ([links.lww.com/WNL/C400](https://links.lww.com/WNL/C400)).

### PVS Rating

The PVS rating was performed in all cohorts according to 1 validated standardized manual rating method or an automatic extraction method based on this (RS3 and UKB).<sup>27-29,35</sup> The primary rating sequence was the T2-weighted sequence for all studies except SHIP, SHIP-Trend, and UKB, in which T1-weighted sequences were used.

For the manual measurements, we have previously examined the effect of using T1-weighted images as the primary rating sequence and found a high reliability with using T2-weighted images (mean intraclass correlation coefficient [ICC] = 0.8).<sup>30</sup> We counted PVS between 1 and 3 mm. The rating was performed in 4 brain regions: mesencephalon, hippocampus, basal ganglia, and centrum semiovale. For the latter 2 regions, which are large and can harbor hundreds of PVS, only a single slice was rated. For the basal ganglia, this was at the height of the

anterior commissure, and for the centrum semiovale, this was 10 mm above the ventricles. Trained investigators rated PVS in ASPS, ASPS-Family (C.G., P.K., P.S., R.S., and T.P.), EDIS (S.H.), RS1, RS2, SHIP, and SHIP-Trend (H.H.H.A.) at each participating center, with good to excellent interrater and intrarater reliability, ICC 0.62–0.82 and >0.8, respectively.<sup>27</sup> The size and shape of lesions, as well as the presence of a hyperintense rim on FLAIR images, were used to differentiate PVS from lacunes.

The automated method was trained using the abovementioned manual ratings within RS1 and RS2. This method is applied per region and provides the PVS count for that region.<sup>28,29</sup> Initially, this method was developed and tested using T2-weighted sequences, obtaining ICCs above 0.8 for all regions.<sup>28</sup> Later, the method was trained and tested using T1-weighted images (mean squared error difference from T2 method; 0.5–5). When applied to the UKB, the T1-weighted method produced unreliable results for the mesencephalon, leading to the exclusion of this region. Full details pertaining to the automated methodology have been thoroughly described before.<sup>28,29</sup>

**Table 1** Characteristics of the Study Population

Characteristic	ASPS	ASPS family	EDIS Chinese	EDIS Malay	RS1	RS2	RS3	SHIP	SHIP-Trend	UKB
<b>Sample size</b>	670	354	284	299	1,184	884	2,955	1,116	2,053	30,177
<b>Age, y</b>	65.93 (8.23)	64.28 (10.46)	70.50 (6.33)	71.19 (7.04)	79.16 (4.85)	67.45 (5.47)	57.05 (6.59)	55.81 (12.86)	51.11 (14.09)	63.75 (7.53)
<b>Age range, y</b>	44–82	38–83	60–86	60–88	69–96	60–91	45–89	30–90	21–82	44–81
<b>Male sex, n (%)</b>	286 (42.68)	139 (39.26)	135 (47.53)	127 (42.47)	513 (43.32)	435 (49.2)	1,315 (44.5)	539 (48.29)	996 (48.51)	14,437 (47.84)
<b>Educational attainment, y</b>	11.04 (2.49)	11.63 (3.01)	5.68 (4.93)	4.46 (3.63)	11.61 (3.76)	12.77 (3.61)	12.98 (4.08)	12.30 (2.89)	11.74 (3.51)	17.17 (4.13)
<b>Country</b>	Austria	Austria	Singapore	Singapore	Netherlands	Netherlands	Netherlands	Germany	Germany	United Kingdom
<b>Ancestry</b>	European	European	Chinese	Malay	European	European	European	European	European	European
<b>Cardiovascular risk factors</b>										
<b>Systolic blood pressure, mm Hg</b>	139.24 (20.53)	137.80 (21.20)	147.22 (18.79)	151.86 (20.80)	153.60 (21.75)	143.84 (18.54)	132.11 (18.77)	132.81 (18.29)	127.47 (17.32)	137.58 (18.14)
<b>Diastolic blood pressure, mm Hg</b>	85.35 (9.37)	86.36 (9.31)	76.46 (10.43)	79.26 (11.59)	83.73 (11.37)	80.97 (10.19)	82.32 (10.86)	80.84 (9.92)	77.51 (9.67)	78.92 (10.03)
<b>Glucose, mmol/L</b>	—	—	6.66 (2.77)	7.11 (2.97)	5.77 (1.14)	5.63 (1.10)	5.53 (1.26)	5.64 (1.56)	5.62 (1.43)	4.99 (0.97)
<b>Total cholesterol, mmol/L</b>	5.87 (1.07)	5.48 (1.04)	4.89 (0.87)	5.19 (1.30)	5.29 (1.06)	5.71 (0.95)	5.57 (1.07)	—	5.51 (1.09)	5.73 (1.09)
<b>HDL cholesterol, mmol/L</b>	1.49 (0.46)	1.74 (0.55)	1.45 (0.38)	1.35 (0.39)	1.46 (0.39)	1.43 (0.39)	1.43 (0.44)	1.45 (0.39)	1.46 (0.37)	1.47 (0.38)
<b>LDL cholesterol, mmol/L</b>	3.70 (0.97)	3.18 (0.87)	2.85 (0.80)	3.14 (1.11)	—	—	3.48 (0.96)	3.36 (0.92)	3.41 (0.93)	3.58 (0.83)
<b>Triglycerides, mmol/L</b>	1.49 (0.81)	1.37 (0.84)	1.34 (0.81)	1.60 (0.88)	—	—	1.49 (0.91)	—	1.57 (1.09)	1.66 (0.97)
<b>Perivascular spaces</b>										
<b>Mesencephalon</b>	1.81 (1.73)	2.95 (2.48)	0.73 (0.94)	1.05 (1.29)	1.65 (1.75)	1.83 (1.78)	1.54 (1.27)	0.62 (0.99)	0.51 (0.90)	—
<b>Hippocampus</b>	3.54 (2.51)	5.18 (3.19)	1.12 (1.31)	1.24 (1.64)	3.52 (3.03)	3.33 (3.07)	2.94 (2.50)	1.86 (2.26)	1.55 (2.05)	2.44 (1.63)
<b>Basal ganglia</b>	6.07 (3.27)	8.19 (3.79)	2.13 (2.08)	2.86 (2.88)	4.63 (4.08)	3.46 (2.96)	2.42 (1.43)	1.11 (2.11)	0.82 (1.59)	1.34 (0.70)
<b>Centrum semiovale</b>	13.04 (12.20)	13.27 (11.87)	3.56 (4.00)	4.46 (5.15)	7.73 (6.33)	7.57 (5.77)	7.00 (5.16)	2.39 (3.44)	1.89 (2.86)	3.29 (2.12)
<b>Other MRI markers</b>										
<b>White matter hyperintensities, mL</b>	0.90 [1.60–9.31]	3.58 [1.60–9.31]	1.95 [1.60–9.31]	2.16 [1.60–9.31]	8.44 [1.60–9.31]	3.59 [1.60–9.31]	2.07 [1.34–3.61]	—	—	1.60 [1.15–2.52]
<b>White matter, mL</b>	716.77 (86.43)	513.95 (80.12)	364.66 (41.86)	357.41 (49.21)	375.02 (55.62)	404.38 (55.74)	421.61 (58.22)	615.24 (76.03)	612.09 (77.12)	471.76 (57.15)
<b>Gray matter, mL</b>	427.45 (44.92)	580.25 (64.24)	531.13 (62.41)	508.44 (60.54)	509.68 (52.40)	524.88 (51.28)	539.64 (54.35)	562.61 (66.85)	576.60 (68.21)	620.54 (55.97)
<b>CSF, mL</b>	1.59 (0.33)	1.62 (0.36)	200.63 (24.11)	192.86 (23.85)	247.96 (52.43)	207.23 (49.54)	179.19 (43.53)	252.98 (45.93)	246.46 (45.90)	1.12 (0.27)
<b>Lacunae, n (%)</b>	90 (13.71)	23 (6.7)	47 (16.54)	65 (21.73)	189 (15.96)	62 (7.01)	126 (4.26)	19 (1.7)	38 (1.85)	—

Continued

**Table 1** Characteristics of the Study Population (continued)

Characteristic	ASPS	ASPS family	EDIS Chinese	EDIS Malay	RS1	RS2	RS3	SHIP	SHIP-Trend	UKB
Cortical infarcts, n (%)	15 (2.29)	15 (4.37)	7 (2.46)	11 (3.67)	76 (6.41)	21 (2.37)	79 (2.67)	20 (1.79)	31 (1.5)	—
<b>APOE</b>										
Data available, n	621	341	208	222	1,126	854	2,711	1,100	853	30,177
ε2-alleles, %	16	14	11	13	17	17	15	16	18	16
ε4-alleles, %	22	18	0	0	29	30	33	23	28	30

Abbreviations: ASPS = Austrian Stroke Prevention Study; EDIS = Epidemiology of Dementia in Singapore; HDL = high-density lipoproteins; LDL = low-density lipoproteins; SHIP = Study of Health In Pomerania; UKB = UK Biobank. All values are means (SDs) or median values [interquartile range], unless otherwise stated.

## Assessment of Determinants

We investigated a range of potential determinants, including demographics, cardiovascular risk factors, *APOE* genotypes, and MRI markers. These determinants were chosen because of their suggested association with PVS in previous studies.<sup>8</sup> We also included risk factors for other CSVD markers because of their known overlap with PVS.<sup>22</sup>

We first looked at age at the time of scanning, sex, and educational attainment. Cohort-specific education categories were recoded to years of education to make comparisons possible. We measured systolic and diastolic blood pressure (BP) and calculated pulse pressure, the difference between the 2. Blood samples were used to measure the levels of total cholesterol, high-density lipoprotein (HDL) cholesterol, low-density lipoprotein cholesterol, triglycerides, and glucose. Persons were coded according to their smoking status as never, former, or current smokers. *APOE* genotyping was performed using TaqMan assays, except for SHIP, SHIP-Trend, and UKB, where it was imputed from genotyping assays. MRI markers that were investigated included lacunes of presumed vascular origin and cortical infarcts, which were rated according to the established criteria.<sup>36</sup> Tissue volumes were automatically determined using several segmentation algorithms.<sup>37-40</sup> For this, voxels were classified as gray matter, WM, WM hyperintensities (WMH), and CSF, and all voxels in a single class were summed to obtain volumes. Intracranial volume (ICV) was the total of these volumes. Given differences in segmentation methods, all volumes were first standardized within cohorts and subsequently pooled. The UKB was additionally stratified using self-reported ethnicity (European, Asian, and African) coded by data field 21,000 (White, Asian or Asian British and Chinese, and Black or Black British, respectively).

## Statistical Analyses

PVS counts per region were analyzed as dependent variables with zero-inflated negative binomial regression models, taking into account their discrete nature and excess zeros using a probability distribution. Each of the determinants was modeled as an independent variable along with other covariates. To aid comparison, all determinants were standardized except age, sex, years of education, smoking status, presence of cortical infarcts and lacunes, and *APOE* genotypes. All analyses were adjusted for age and sex and volumetric measures additionally for ICV. Cardiovascular analyses were further adjusted for systolic and diastolic BP, cholesterol, body mass index (BMI), and glucose. Furthermore, we explored whether cardiovascular risk factors (i.e. systolic and diastolic BP, cholesterol, BMI, and glucose) and MRI markers (i.e. ICV, lacunes, cortical infarcts, and WMH volume) were independently associated with PVS counts by modeling them together. Random effects for cohorts were incorporated in the models. To take into account the number of potential determinants tested in this study, we also indicate which variables survive Bonferroni correction for multiple testing, corresponding to  $p < 0.0026$  (0.05/19 variables). Analysis

within SHIP-Trend and EDIS Chinese data sets did not consistently fit the negative binomial regression model, predominantly within the mesencephalon; thus, these analyses were omitted. These data were however included in the full pooled analysis. All analyses were performed in R (version 3.4.1) using the “glmmADMB” package.

## Data Availability

The data within this study are available either within the article and the supplementary material or from the authors on reasonable request.

## Standard Protocol Approvals, Registrations, and Patient Consents

ASPS was approved by the institutional review board of the Medical University of Graz. EDIS was approved by the relevant institutional ethics review boards (National Healthcare Group Domain Specific Review Board and the SingHealth Centralised Institutional Review Board). The RS has been approved by the Institutional Review Board (Medical Ethics Committee) of the Erasmus Medical Center and by the review board of the Netherlands Ministry of Health, Welfare, and Sports. SHIP was approved by the ethics committee of the University of Greifswald. UKB has approval from the North West Multicentre Research Ethics Committee as a Research Tissue Bank approval.

## Results

### Study Population

The population characteristics of the contributing sites are presented in Table 1. The 39,976 participants covered a wide age range, from age 20 to 96 years, and 18,922 (47.3%) were men. Most participants were of European ancestry (97.2%), but this study also included persons from 2 Asians populations, and in the UKB, 1.8% self-reported non-Europeans were included.

The overall prevalence of PVS was 98%, while region-specific prevalence estimates were 59% (mesencephalon), 90% (hippocampus), 92% (basal ganglia), and 95% (centrum semiovale). When excluding automated procedures, the overall prevalence of PVS was 90% with region-specific estimates being considerably lower, namely 52% (mesencephalon), 69% (hippocampus), 64% (basal ganglia), and 73% (centrum semiovale) (eTable 3, [links.lww.com/WNL/C400](https://links.lww.com/WNL/C400)).

### Demographics

First, we investigated demographic factors in relation to PVS counts. Figure 2 shows the age-specific and sex-specific trends of PVS counts in the 4 brain regions. PVS counts for most regions were higher within the manually rated data sets except for the mesencephalon (eFigure 1, [links.lww.com/WNL/C398](https://links.lww.com/WNL/C398)). Higher age was associated with more PVS in all regions, with the largest effect in the basal ganglia (OR per decade [95% CI] = 1.29 [1.28–1.30]) compared with the other regions (ORs between 1.06 and 1.22) (eTable 4, [links.lww.com/WNL/C400](https://links.lww.com/WNL/C400)). Men had more PVS in mesencephalon (1.13 [1.08–1.18]), centrum

semiovale (1.06 [1.04–1.07]), and basal ganglia (1.02 [1.00–1.03]), whereas they had less in the hippocampus (0.82 [0.81–0.83]), particularly at older age. Years of education were associated with more PVS in the centrum semiovale (1.01 [1.00–1.01]) and hippocampus (1.00 [1.00–1.01]). Forest plots with all effect estimates, that is, per individual site and pooled, are shown in Figure 3.

### Cardiovascular Risk Factors

Next, we studied the relation between cardiovascular risk factors and PVS counts (Figure 4; eFigure 2, [links.lww.com/WNL/C398](https://links.lww.com/WNL/C398); eTable 4, [links.lww.com/WNL/C400](https://links.lww.com/WNL/C400)). Higher BP was associated with more PVS in all regions, with the largest effects for diastolic BP. For the other cardiovascular risk factors, the significant associations were mostly for HDL cholesterol (hippocampus, 1.02 [1.01–1.02]; mesencephalon, 1.03 [1.00–1.05]; centrum semiovale, 1.01 [1.01–1.02]) and glucose levels (hippocampus, 1.02 [1.01–1.03]; basal ganglia, 1.01 [1.00–1.02]). Furthermore, there was an association between higher levels of total cholesterol and centrum semiovale PVS (1.01 [1.00–1.02]) and between a higher BMI and PVS in the basal ganglia (1.01 [1.00–1.02]) and centrum semiovale (1.01 [1.00–1.02]). Current smoking was related to lower counts of hippocampus PVS (0.90 [0.87–0.93]). Former smoking however showed an association with lower counts of hippocampus PVS (0.97 [0.96–0.99]) but higher counts within the basal ganglia PVS (1.02 [1.00–1.04]).

After additional adjustment for other cardiovascular risk factors, the association with diastolic BP remained significant (eFigure 3, [links.lww.com/WNL/C398](https://links.lww.com/WNL/C398); eTable 4, [links.lww.com/WNL/C400](https://links.lww.com/WNL/C400)).

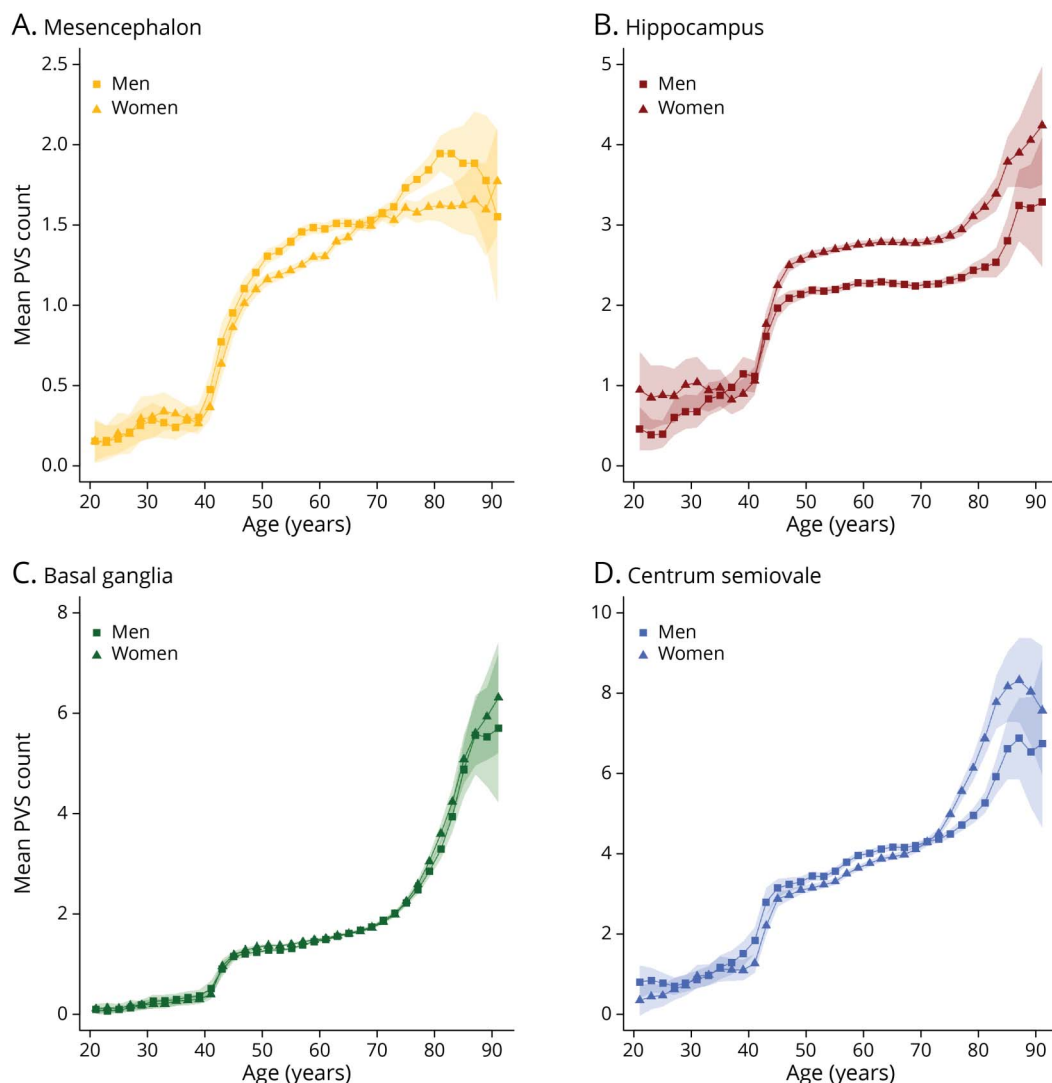
### APOE Genotypes

We also investigated the effect of APOE genotypes on PVS counts (Figure 5; eFigure 4, [links.lww.com/WNL/C398](https://links.lww.com/WNL/C398); eTable 4, [links.lww.com/WNL/C400](https://links.lww.com/WNL/C400)). The most significant association was identified for  $\epsilon 3/\epsilon 4$  carriers and hippocampal PVS (1.03 [1.01–1.05]). Furthermore, there was a dose-dependent effect between  $\epsilon 4$ -alleles and hippocampus PVS (1.02 [1.01–1.04] per allele), but this was not significant for the other regions. Similar effect estimates were found after adjustment for cardiovascular risk factors (eFigure 5).

### MRI Markers

Finally, we explored MRI markers in relation to PVS counts (Figure 6; eFigure 6, [links.lww.com/WNL/C398](https://links.lww.com/WNL/C398); eTable 4, [links.lww.com/WNL/C400](https://links.lww.com/WNL/C400)). WMH volume and presence of lacunes were both associated with more PVS in multiple brain regions, with the strongest effects for the basal ganglia (1.14 [1.13–1.14] and 1.10 [1.09–1.12], respectively). The presence of cortical infarcts were also associated with more basal ganglia PVS (1.04 [1.02–1.05]). Further associations were present between larger gray matter volume and more PVS in the hippocampus (1.05 [1.04–1.07]) and centrum semiovale (1.07 [1.06–1.09]). For WM, larger volumes were associated with less basal ganglia PVS (0.98 [0.97–1.00]) and more PVS in the other regions, particularly in the mesencephalon (1.23 [1.14–1.32]).

**Figure 2** Age-Specific and Sex-Specific Trends of the Number of PVS in the 4 Brain Regions



Mean counts of PVS across the lifespan in the 4 brain regions: mesencephalon (A), hippocampus (B), basal ganglia (C), and centrum semiovale (D). Mean PVS counts for men are depicted with squares, and mean PVS counts for women are depicted with triangles. Abbreviations: PVS = perivascular spaces.

After additional adjustment for cardiovascular risk factors, most associations remained similar or were slightly strengthened (eFigure 7, [links.lww.com/WNL/C398](https://links.lww.com/WNL/C398); eTable 4, [links.lww.com/WNL/C400](https://links.lww.com/WNL/C400)). When also including other MRI markers in the model, most effects diminished except for the association between WMH and PVS in the hippocampus (1.16 [1.13–1.20]) and basal ganglia (1.17 [1.15–1.20]) and between WM and basal ganglia PVS (0.95 [0.92–0.98]) (eFigure 8; eTable 4). It is of interest that the direction of effect changed for the association between WM volume and centrum semiovale PVS (0.96 [0.93–1.00]).

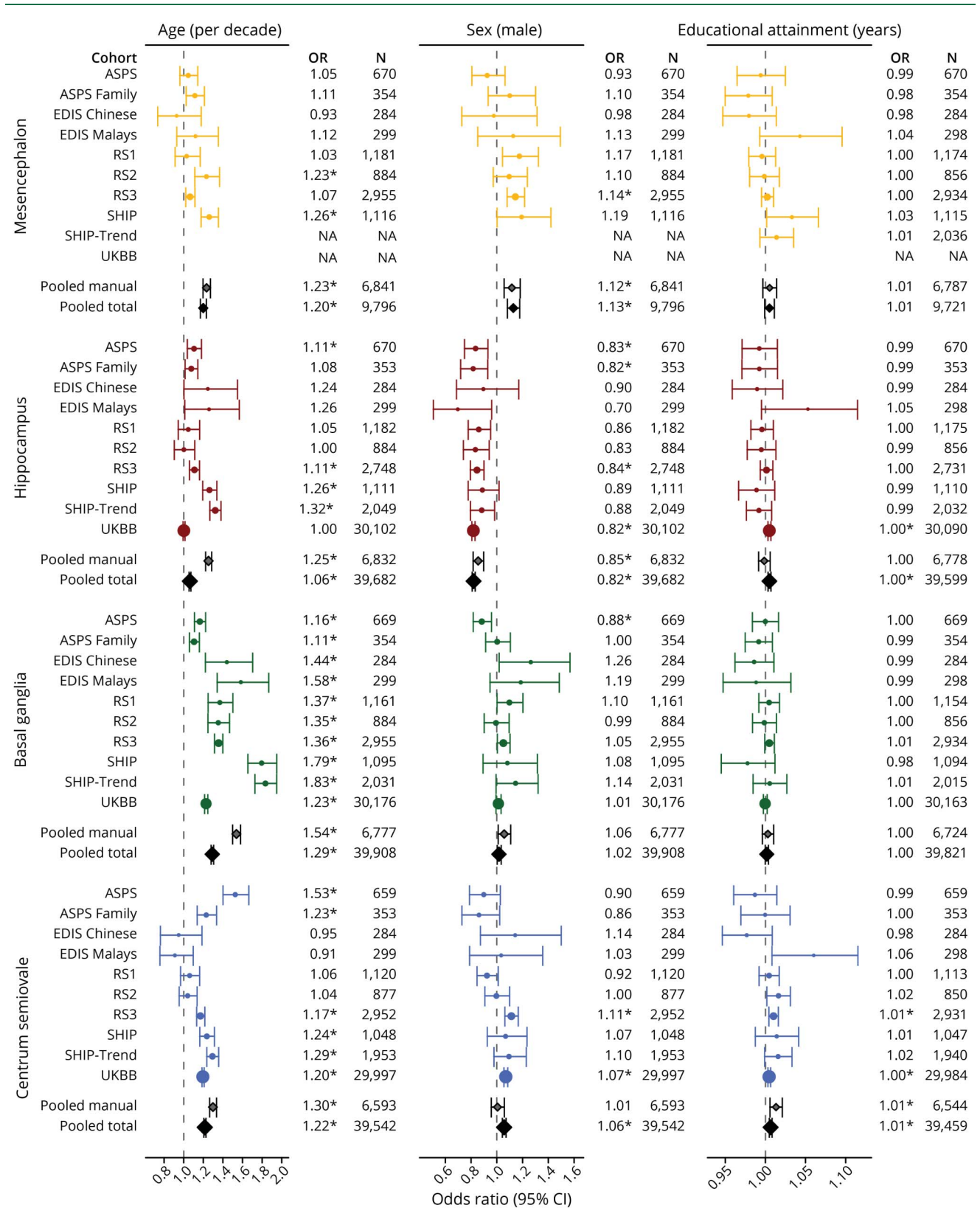
### Sensitivity Analyses

When only including studies with manual PVS counts, most effect estimates were stronger (Figures 3–6; eTable 4, [links.lww.com/WNL/C400](https://links.lww.com/WNL/C400)). Some relationships even displayed opposite effects, such as the association between gray matter volume and centrum semiovale PVS (manual only 0.86

[0.82–0.91] and total pooled 1.07 [1.06–1.09]). These opposite effects were also seen between BMI and hippocampus PVS (manual only 1.04 [1.02–1.07] and total pooled 0.99 [0.98–0.99]). Differences in prevalence were also seen, with little variation across different ages within the automated quantification set (eFigure 1, [links.lww.com/WNL/C398](https://links.lww.com/WNL/C398)). Associations between individuals older than 60 years and younger than 60 years did not differ substantially (eFigure 9).

When comparing prevalence across ethnicities, higher PVS counts in the hippocampus and centrum semiovale were observed for participants with an African ethnicity, particularly in the age stratum of 60 years and older (eFigure 10, [links.lww.com/WNL/C398](https://links.lww.com/WNL/C398)). For most relationships between determinants and PVS counts, the results did not differ significantly (eFigure 11). Differences were however observed for the association between sex and centrum semiovale PVS, with higher PVS counts for men in the European and Asian

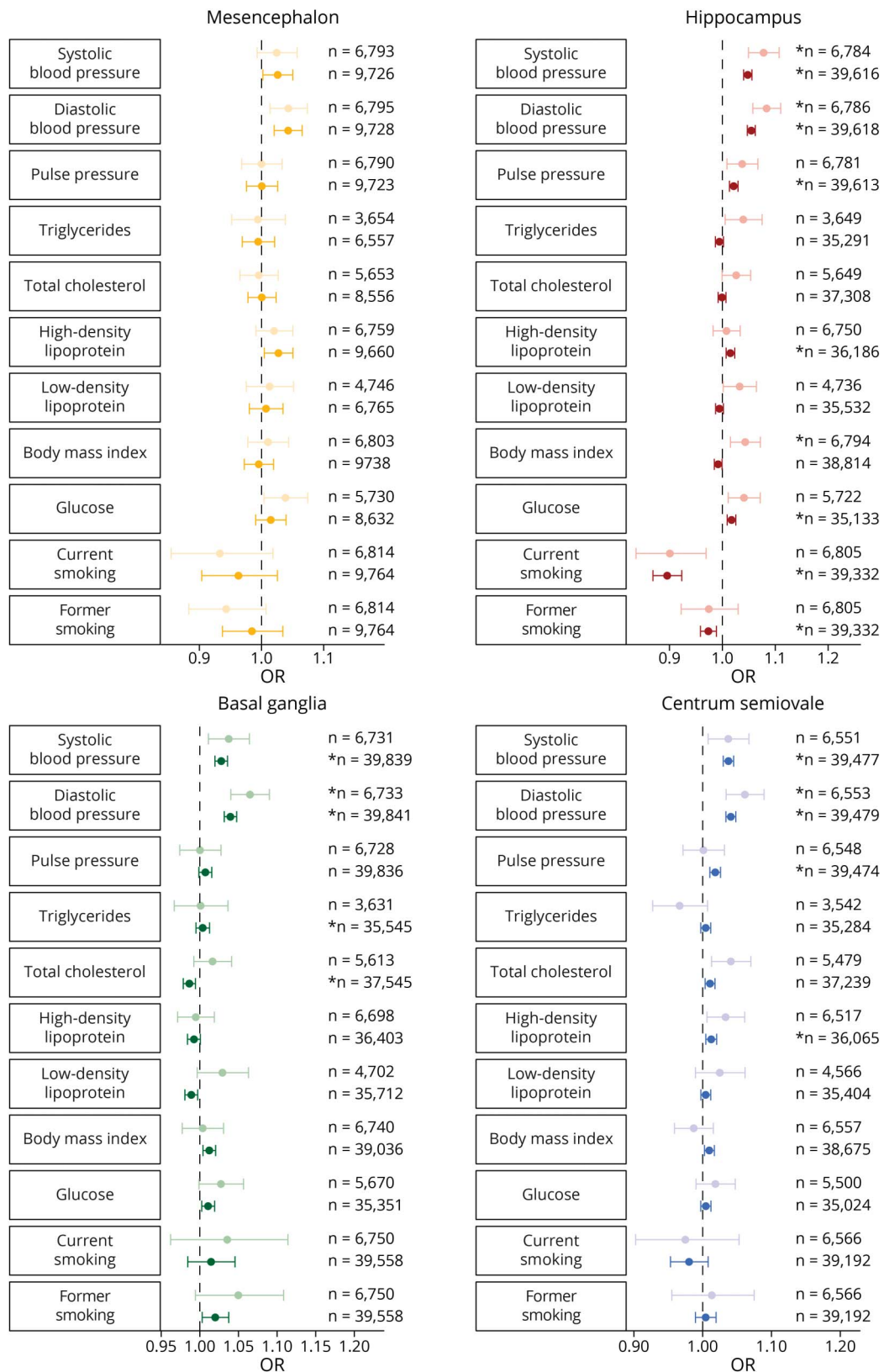
**Figure 3** Study-Specific and Pooled Associations Between Demographic Factors and the Number of PVS in the 4 Brain Regions



Forest plot showing odds ratios with corresponding 95% confidence intervals for the association between demographic factors and PVS counts in the 4 brain regions, both from 10 individual sites and pooled analyses. \*Survived multiple testing correction ( $p < 0.05/19$ ). Abbreviations: PVS = perivascular spaces.

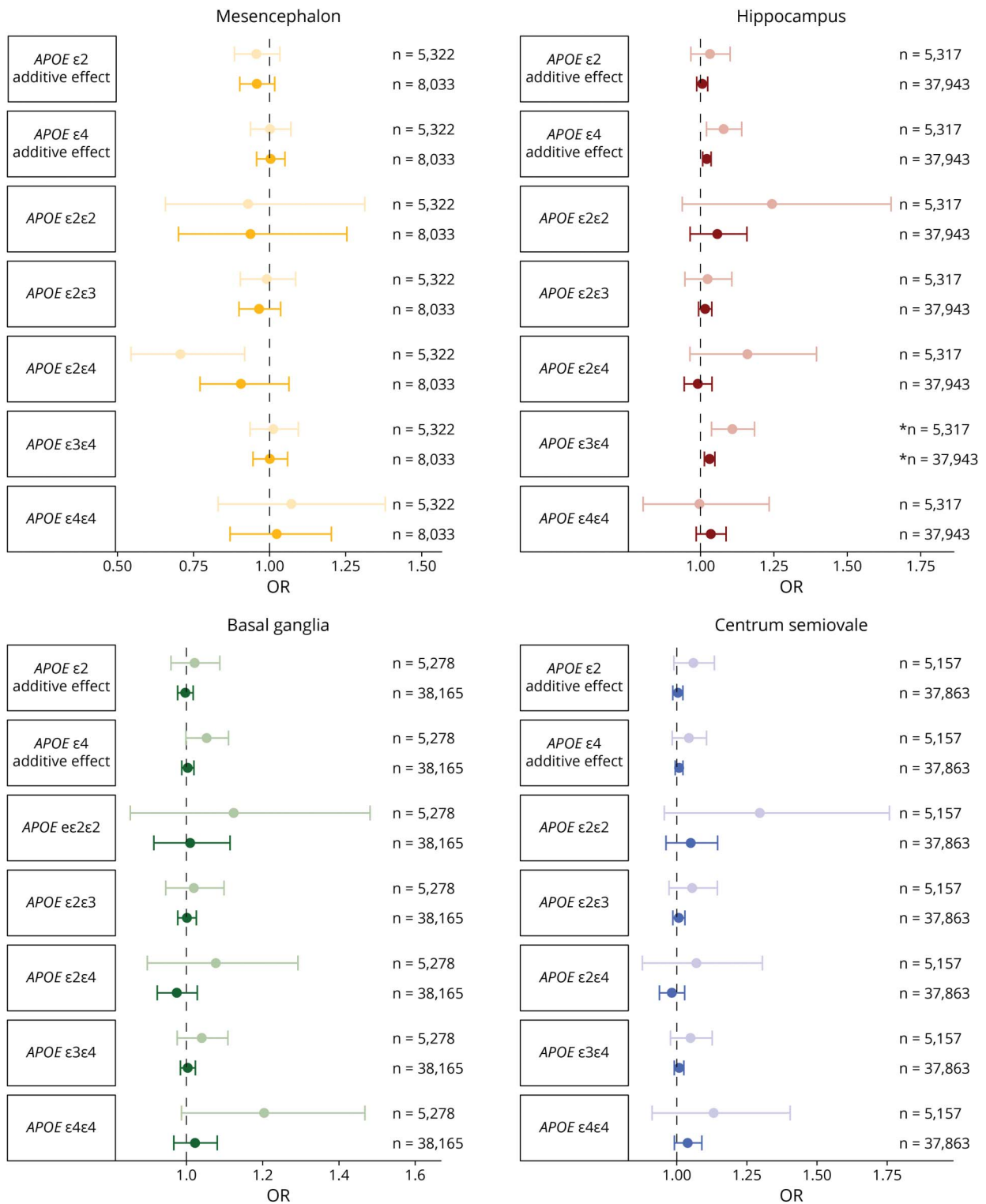


**Figure 4** Pooled Associations Between Cardiovascular Risk Factors and the Number of PVS in the 4 Brain Regions



Forest plot showing odds ratios with corresponding 95% confidence intervals for the association between cardiovascular risk factors and PVS counts in the 4 brain regions. Lighter colors correspond to pooled analyses including manual ratings only, and darker colors correspond to pooled analyses including both the manual and automated ratings. \*Survived multiple testing correction ( $p < 0.05/19$ ). Abbreviations: PVS = perivascular spaces.

**Figure 5** Pooled Associations Between *APOE* Genotypes and the Number of PVS in the 4 Brain Regions

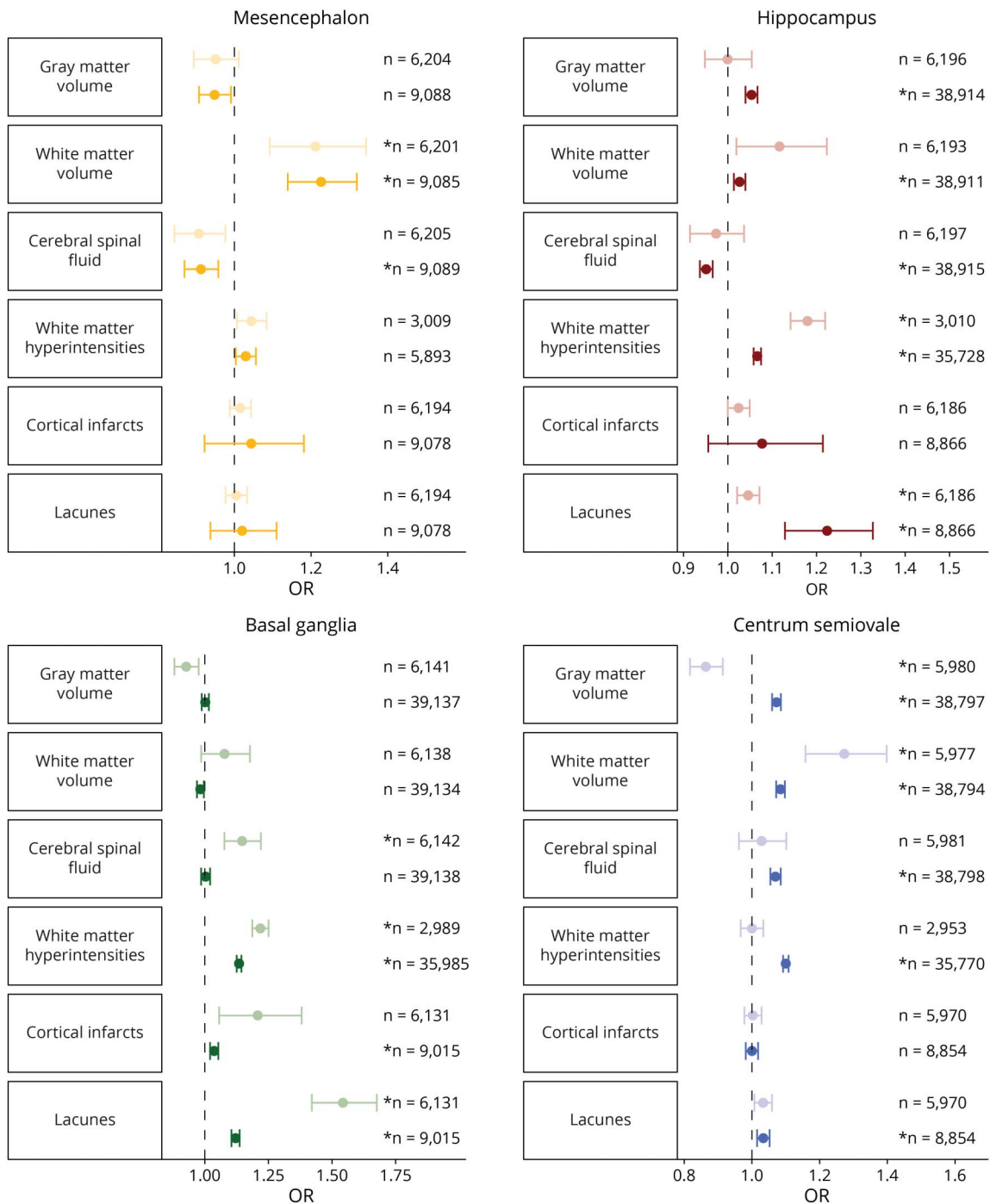


Forest plot showing odds ratios with corresponding 95% confidence intervals for the association between *APOE* genotypes and PVS counts in the 4 brain regions. Lighter colors correspond to pooled analyses including manual ratings only, and darker colors correspond to pooled analyses including both the manual and automated ratings. \*Survived multiple testing correction ( $p < 0.05/19$ ). Abbreviations: PVS = perivascular spaces.

subgroups, yet lower counts in the African subgroup (European 1.07 [1.06–1.09], African 0.81 [0.68–0.96], and Asian 1.06 [0.93–1.19]). Further differences were seen for the associations of *APOE* genotypes, with significant associations

between  $\epsilon$ 4/ $\epsilon$ 4 carriers and centrum semiovale PVS and  $\epsilon$ 4-allele dosages and hippocampus PVS observed in the Asian group only (2.24 [1.25–4.01] and 1.17 [1.01–1.36], respectively).

**Figure 6** Pooled Associations Between MRI Markers and the Number of PVS in the 4 Brain Regions



Forest plot showing odds ratios with corresponding 95% confidence intervals for the association between MRI markers and PVS counts in the 4 brain regions. Lighter colors correspond to pooled analyses including manual ratings only, and darker colors correspond to pooled analyses including both the manual and automated ratings. \*Survived multiple testing correction ( $p < 0.05/19$ ). PVS = perivascular spaces

## Discussion

PVS have been hypothesized to enlarge in response to various brain pathologies. Studies on the determinants of PVS have been limited to relatively small single-site investigations and use widely different methodologies, making it difficult to disentangle true associations from false and/or biased results.

The results of our multisite analysis of population-based cohort studies showcase this strikingly, with variable results from individual sites converging into a reliable overall picture of PVS determinants. We found that increasing age was related to more PVS throughout the brain, while other determinants were region-specific, including sex, cardiovascular risk factors, APOE genotypes, and MRI markers of CSVD. Our results

support the notion that PVS have a multifactorial origin and highlight the power of collaborative efforts.

Of all investigated factors, age was among the most important PVS determinants. Although PVS could be seen even in the youngest participants in their early twenties, a sharp increase in PVS counts was apparent from age 40 years, particularly within manually rated data. The prevalence of PVS in the various regions ranged between 7.5% and 98% depending on the age group and between 47% and 100% across the whole brain. Three other population-based studies have reported a wide variety of prevalences, namely 16% (mean age 76 years),<sup>41</sup> 87.5% (mean age 72 years),<sup>3</sup> and 100% (mean age 73 years).<sup>1</sup> These large differences likely reflect heterogeneity in methods, ie, rating scales and factors related to the MRI scanner, such as field strength, sequence, and image resolution. Different thresholds for PVS sizes were also defined,<sup>1,3,41</sup> resulting in higher estimates for high-resolution images.<sup>1</sup> We found that the effect of age was strongest for the basal ganglia (OR per decade = 1.29) compared with the other regions (ORs 1.06–1.22), representing a striking difference of PVS increase across regions within the same period. This is in line with a mouse study and a meta-analysis of cohort studies that found regional differences of PVS in response to aging.<sup>2,8</sup> This indicates that, rather than a shared process leading to more PVS throughout the brain, there might be factors contributing specifically to pathology in certain regions.

One striking region-specific factor was sex, for which we report several novel findings. Men had more PVS in the mesencephalon, a region where sex differences have been described with respect to both its structure and function.<sup>42</sup> The mesencephalon is important for motor control and cognition, but PVS have remained understudied and are mostly the subject of case reports. One study did not find an association of sex with mesencephalon PVS, but pooled all infratentorial regions together.<sup>3</sup> In that study, women had higher subcortical WM PVS scores, whereas a study in Chinese stroke patients reported higher scores in men.<sup>15</sup> We found significant sex differences for the centrum semiovale, with more PVS in men, in line with a previous study that found higher WM PVS volumes for.<sup>43</sup> By contrast, more hippocampal PVS were seen in women, as observed earlier.<sup>15</sup> We did not identify any sex differences in the basal ganglia, in line with most previous studies,<sup>3,5,15</sup> but contrary to 1 study that found more PVS in men.<sup>1</sup> The sex differences could be due to differences in brain development, but comparisons between men and women of the morphological and functional aspects of PVS remain to be reported. In addition, the differences were most apparent later in life, suggesting a differential susceptibility to age-related brain pathologies. In light of women's higher risk of Alzheimer disease, it is interesting that they have more hippocampus PVS and to a lesser extent centrum semiovale PVS because amyloid- $\beta$  is disproportionately deposited in hippocampal and cortical tissues.<sup>44,45</sup> Another remarkable finding is the negative association between smoking and hippocampus PVS counts.

Previous studies were inconclusive for this relation but suggested no association.<sup>4</sup> Therefore, further research is needed to replicate this finding and explore possible underlying pathophysiologic mechanisms.

We also found that a higher systolic, and particularly diastolic, BP was associated with more PVS. High BP has also been related to other CSVD markers, including WMH, infarcts, and microbleeds; this included reports of differential associations between systolic and diastolic BP.<sup>46,47</sup> The stronger associations with diastolic pressure, rather than systolic, suggest that the lower bound of BP is more important for PVS enlargements. A possible explanation is that a continuously raised diastolic BP leads to a greater extravasation of fluid into the perivascular space or alternatively prevents sufficient fluid from returning into the bloodstream (after a systolic pulse). Gutierrez et al.<sup>3</sup> suggested that PVS might arise behind a large drop in vascular caliber that exposes the smaller vessels to greater pulsatility and mechanical forces, which is the case for arteries in the basal ganglia and brainstem. Although previous research has reported high BP and hypertension<sup>8</sup> as a determinant of PVS severity in the basal ganglia,<sup>3,16</sup> our novel finding with mesencephalon PVS provides further support for this hypothesis. However, pulse pressure, as a measure of the pulsatile component of BP, was not strongly related to PVS counts. Future studies should use more extensive ways of measuring the compliance and distensibility of arteries, preferably in vessel beds relevant for the brain.

Most cardiovascular risk factors associations were strongest for hippocampal PVS. There is some debate on whether these fluid-filled cavities in the hippocampus actually represent PVS. Some define these lesions as hippocampal sulcal cavities that are believed to be a remnant from brain development.<sup>48</sup> Furthermore, it has recently been suggested that a subset of these, which seem hyperintense on FLAIR, might actually represent microinfarcts.<sup>18</sup> Nevertheless, others have observed characteristics of typical PVS, namely the presence of a vessel within these lesions that is surrounded by a fluid-filled compartment without apparent damage to the surrounding tissue.<sup>48</sup> Our finding that cardiovascular risk was related to hippocampus PVS supports this potential vascular origin. Another finding that could add to this is the link with *APOE*  $\epsilon 4$  genotypes, which influences lipid metabolism and increases risk of cardiovascular disease.<sup>49</sup> However, *APOE*  $\epsilon 4$  is also an important risk factor for Alzheimer disease and predisposes to amyloid pathology in the brain, particularly in the hippocampus.<sup>50</sup> Furthermore, *APOE*  $\epsilon 4$  may disrupt perivascular drainage of soluble amyloid- $\beta$  from the brain and thereby increase the risk for Alzheimer disease.<sup>e1</sup> It remains to be determined whether the association between *APOE*  $\epsilon 4$  and hippocampal PVS reflects a cardiovascular or amyloid-related pathway or both.

The link between WMH and basal ganglia PVS has been extensively described,<sup>5,8,17</sup> and our study confirms this. The mechanism underlying this association has not been elucidated, but a possible explanation is that drainage from the

(periventricular) WM goes through the basal ganglia PVS. Alternatively, shared determinants could induce an association, but there was little influence by additional adjustment for cardiovascular risk factors and other MRI markers. Nonetheless, potential shared factors not assessed in this study, such as genetics, could well play a role. For lacunes, another consideration is misclassification as PVS or vice versa. However, we paid particular attention to differentiating PVS from lacunes using their shape, size, and presence of a hyperintense rim on FLAIR images.<sup>27</sup> Furthermore, lacunes are per definition different lesions because PVS larger than 3 mm were rated separately in our rating protocol,<sup>27</sup> and this is also the lower size bound of lacunes. Nevertheless, it remains possible that the presence of lacunes might have influenced the counting of PVS, but these visual ratings cannot be performed in a blinded fashion. However, we also find various associations with other MRI markers, including larger CSF and basal ganglia, hippocampus and centrum semiovale PVS, as well as smaller gray matter volume and centrum semiovale PVS when adjusting for other cardiovascular and MRI markers, suggesting a relation with tissue loss. The PVS could arise as part of the neurodegenerative process, for example, through insufficient clearance of neurotoxic proteins, but another explanation is that they simply become visible as a secondary consequence of neurodegeneration by filling up the empty space created by brain atrophy. However, multiple relationships with larger tissue volumes and PVS across regions were seen. Longitudinal studies are required to determine the temporal relation between PVS and brain atrophy.

Research investigating ethnic differences in CSVD markers has reported differential effects in relation to lacunes and WMH.<sup>e2,e3</sup> However most studies found no differential effects in relation to microbleeds,<sup>e4-e6</sup> and thus, far little exploration of ethnic differences has been performed in relation to PVS.<sup>8</sup> One previous study did find both basal ganglia and centrum semiovale PVS to be more prevalent in White than Chinese patients who had had a transient ischemic attack or stroke.<sup>9</sup> Another study in stroke-free individuals found higher overall PVS scores in Black individuals compared to White,<sup>3</sup> in line with our findings for African individuals. This study also reveals some ethnic differences in the association between determinants and PVS counts, such as for sex and *APOE*  $\epsilon 4/\epsilon 4$  carriership, mostly within the centrum semiovale. Differential effects of *APOE* alleles across ethnicities have been described previously in the context of Alzheimer disease biomarkers<sup>e7,e8</sup> and intracerebral hemorrhage<sup>e9</sup> but have to our knowledge not yet been described for PVS. Despite these ethnic differences in this study, the included non-European samples were derived from a European-based data set, non-European groups were small, and not all ethnicities were represented. Therefore, more research into larger samples of non-European individuals is needed to unravel whether mechanisms truly differ across ethnicities.

Although the automated method used in UKB and RS3 was based on the manual rating method, this difference in classification may have affected the results. When excluding automated methods, the effects between determinants and PVS counts

became stronger. This may partly be due to differences in population characteristics, particularly in the UKB given the previously described “healthy volunteer bias,”<sup>e10</sup> which may have resulted in an underestimation of the effects. It may also have been affected by the use of T1-weighted images within which PVS are less visible than on T2-weighted images. However, this difference in the magnitude of effect was also seen for the association between lacunes and basal ganglia PVS—an association that could not be tested in the UKB because this cohort was missing lacune information. In fact, when excluding only RS3 from the pooled analysis, the association increased 3-fold.<sup>28,29</sup> These observations suggest that the automated method causes a dilution of the results, despite the automated method reporting high reliability and reproducibility metrics.<sup>28,29</sup> Nevertheless, the classification method should be taken into consideration when interpreting results.

Strengths of this study include the large sample size resulting from a multisite effort; the rigorous harmonization of rating protocols, including a minimal size criterion, allowing data pooling; the use of continuous measures (PVS counts) instead of categorization (i.e. grades/severity scales); appropriate statistical handling with negative binomial regression models; and the investigation of 4 different brain regions, resulting in several region-specific associations. In addition, sensitivity analyses through ethnicity have not been performed within the current PVS literature. This study also has several limitations. One possible limitation is that for the 2 larger brain regions, where hundreds of PVS can be present, only a single slice was used for rating to reduce the time needed for PVS counting. However, we have previously shown that this is sufficient to capture the burden across the whole region, with high correlations between single-slice and whole-region approach.<sup>30</sup> Furthermore, the mesencephalon was not rated using the automated method within the UKB because of its unreliability using T1-weighted images. In addition, within the age trends, the use of summed PVS counts across the 4 regions may not fully capture total brain PVS. Further methods need to be developed to reliably extract this metric. The use of multiple MRI scanners and protocols is strength because it validates the findings beyond a single setup but also a limitation because it introduces an additional source of variability. Furthermore, although this is the largest study on PVS to date, we potentially did not have enough power to explore all ethnic differences because of the limited non-European samples. Finally, the cross-sectional study design does not inform whether the determinants precede PVS development or the other way around.

Although the focus of this study was on cardiovascular risk factors and MRI markers of CSVD, it would be interesting for future studies to investigate other potential determinants to further disentangle potential differences in etiology of PVS per region, including lesser investigated regions such as the mesencephalon. These include MRI markers, such as microbleed locations, WM microstructure, and functional MRI. In addition, it is possible that PVS reflect a more systemic pathology. We and others have shown links with the retinal microvasculature,<sup>e11</sup> kidney function,<sup>e12</sup> and inflammation,<sup>23,e13</sup>

but these findings have yet to be replicated in large studies. Furthermore, although recent studies and meta-analysis are shedding light on the relationship between PVS and clinical outcomes, such as cognitive decline,<sup>7,8,35,e14,e15</sup> stroke,<sup>7,8</sup> and dementia,<sup>7,e15,e16</sup> the results are inconclusive and larger samples with harmonized classification methods are needed.

In conclusion, factors related PVS enlargement include age, sex, cardiovascular risk factors, *APOE*, and other MRI markers. There seems to be important regional specificity for these associations, potentially reflecting heterogeneity in etiology.

## Study Funding

This study was funded by the Austrian Science Fund (projects 13180, 15158, and 12889) and by the Austrian National Bank Jubileumsfond (projects 3905, 4484, and 7776). The sponsors of this study had no role in study design, data collection, data analysis, data interpretation, or writing of the report. This work is supported by Bright Focus foundation, Reference No (A2018165F, A-0002043-00-00) and MOE Tier 1 Grant (A-0006106-00-00). The Rotterdam Study ([epib.nl/research/ergo.htm](http://epib.nl/research/ergo.htm)) is supported by the Erasmus Medical Center and Erasmus University Rotterdam; the Netherlands Organization for Scientific Research (NWO); the Netherlands Organization for Health Research and Development (ZonMw); the Research Institute for Diseases in the Elderly (RIDE); the Ministry of Education, Culture, and Science; the Ministry of Health, Welfare, and Sports; the European Commission (DG XII); and the Municipality of Rotterdam. This study was further financially supported by the Netherlands Organization for Scientific Research (NWO) Grants No. 948-00-010 and 918-46-615. None of the funding organizations or sponsors were involved in the design and conduct of this study; collection, management analysis, and interpretation of the data; and preparation, review, or approval of the manuscript. We would also like to thank the participants of the Rotterdam Study. SHIP is part of the Community Medicine Research net of the University of Greifswald, Germany, which is funded by the Federal Ministry of Education and Research (Grants No. 01ZZ9603, 01ZZ0103, and 01ZZ0403), the Ministry of Cultural Affairs, and the Social Ministry of the Federal State of Mecklenburg-West Pomerania. The study was additionally supported in part by the National Institutes of Health (NIH) grant numbers 1R01AG080821, P30AG066546 and 1U24AG074855. MRI scans in SHIP and SHIP-Trend have been supported by a joint grant from Siemens Healthineers, Erlangen, Germany, and the Federal State of Mecklenburg-West Pomerania. This study was performed using UKB Application Number 23509, and we thank the participants in the UKB imaging study ([ukbiobank.ac.uk/](http://ukbiobank.ac.uk/)). The processing and analysis were performed on the Rekening Nationale Computersystemen NWO Grant (2019.014).

## Disclosure

H.J. Grabe has received travel grants and speakers honoraria from Fresenius Medical Care, Neuraxpharm, Servier, and Janssen Cilag as well as research funding from Fresenius Medical Care. Go to [Neurology.org/N](http://Neurology.org/N) for full disclosures.

## Publication History

Received by *Neurology* February 14, 2022. Accepted in final form August 19, 2022. Submitted and externally peer reviewed. The handling editor was José Merino, MD, MPhil, FAAN.

## Appendix Authors

Name	Location	Contribution
<b>Tavia E. Evans, PhD</b>	Department of Clinical Genetics, Erasmus MC, Rotterdam, the Netherlands; Department of Radiology and Nuclear Medicine, Erasmus MC, Rotterdam, the Netherlands	Drafting/revision of the manuscript for content, including medical writing for content; major role in the acquisition of data; Study concept or design; analysis or interpretation of data
<b>Maria J. Knol, BSc</b>	Department of Clinical Genetics, Erasmus MC, Rotterdam, the Netherlands; Department of Epidemiology, Erasmus MC, Rotterdam, the Netherlands	Drafting/revision of the manuscript for content, including medical writing for content; major role in the acquisition of data; Study concept or design; analysis or interpretation of data
<b>Petra Schwingsenschuh, MD</b>	Department of Neurology, Medical University of Graz, Austria	Drafting/revision of the manuscript for content, including medical writing for content; major role in the acquisition of data
<b>Katharina Wittfeld, PhD</b>	German Center for Neurodegenerative Diseases (DZNE), Site Rostock/Greifswald, Greifswald, Germany; Department of Psychiatry and Psychotherapy, University Medicine Greifswald, Greifswald, Germany	Drafting/revision of the manuscript for content, including medical writing for content; major role in the acquisition of data
<b>Saima Hilal, MD, PhD</b>	Department of Pharmacology, National University of Singapore; Memory Aging & Cognition Centre (MACC), National University Health System, Singapore; Saw Swee Hock School of Public Health, National University of Singapore	Drafting/revision of the manuscript for content, including medical writing for content; major role in the acquisition of data
<b>M. Arfan Ikram, MD PhD</b>	Department of Epidemiology, Erasmus MC, Rotterdam, the Netherlands	Drafting/revision of the manuscript for content, including medical writing for content; major role in the acquisition of data
<b>Florian Dubost, PhD</b>	Department of Radiology and Nuclear Medicine, Erasmus MC, Rotterdam, the Netherlands; Department of Biomedical data sciences, Stanford University, CA	Drafting/revision of the manuscript for content, including medical writing for content; major role in the acquisition of data
<b>Kimberlin M. H. van Wijnen, MSc</b>	Department of Radiology and Nuclear Medicine, Erasmus MC, Rotterdam, the Netherlands	Drafting/revision of the manuscript for content, including medical writing for content; major role in the acquisition of data

## Appendix (continued)

Name	Location	Contribution
<b>Petra Katschnig, MD</b>	Department of Neurology, Medical University of Graz, Austria	Drafting/revision of the manuscript for content, including medical writing for content; major role in the acquisition of data
<b>Pinar Yilmaz, MD</b>	Department of Radiology and Nuclear Medicine, Erasmus MC, Rotterdam, the Netherlands; Department of Epidemiology, Erasmus MC, Rotterdam, the Netherlands; J. Philip Kistler Stroke Research Center, Department of Neurology, Massachusetts General Hospital, Harvard Medical School, Boston	Drafting/revision of the manuscript for content, including medical writing for content; major role in the acquisition of data
<b>Marleen de Bruijne, PhD</b>	Department of Radiology and Nuclear Medicine, Erasmus MC, Rotterdam, the Netherlands; The Machine Learning Section, Department of Computer Science, University of Copenhagen, Denmark	Drafting/revision of the manuscript for content, including medical writing for content; major role in the acquisition of data
<b>Mohamad Habes, PhD</b>	German Center for Neurodegenerative Diseases (DZNE), Site Rostock/Greifswald, Greifswald, Germany; Neuroimage Analytics Laboratory (NAL) and the Biggs Institute Neuroimaging Core (BINIC), Glenn Biggs Institute for Alzheimer's & Neurodegenerative Diseases, University of Texas Health Science Center San Antonio (UTHSCSA), TX	Drafting/revision of the manuscript for content, including medical writing for content; major role in the acquisition of data
<b>Christopher Chen, MD</b>	Department of Pharmacology, National University of Singapore; Memory Aging & Cognition Centre (MACC), National University Health System, Singapore	Drafting/revision of the manuscript for content, including medical writing for content; major role in the acquisition of data
<b>Sönke Langer, PhD</b>	Institute of Diagnostic Radiology and Neuroradiology, University Medicine Greifswald, Greifswald, Germany	Drafting/revision of the manuscript for content, including medical writing for content; major role in the acquisition of data
<b>Henry Völzke, MD</b>	Institute for Community Medicine, University Medicine Greifswald, Greifswald, Germany	Drafting/revision of the manuscript for content, including medical writing for content; major role in the acquisition of data

## Appendix (continued)

Name	Location	Contribution
<b>M. Kamran Ikram, MD PhD</b>	Department of Epidemiology, Erasmus MC, Rotterdam, the Netherlands; Memory Aging & Cognition Centre (MACC), National University Health System, Singapore; Department of Neurology, Erasmus MC, Rotterdam, the Netherlands	Drafting/revision of the manuscript for content, including medical writing for content; major role in the acquisition of data
<b>Hans J. Grabe, MD</b>	German Center for Neurodegenerative Diseases (DZNE), Site Rostock/Greifswald, Greifswald, Germany; Department of Psychiatry and Psychotherapy, University Medicine Greifswald, Greifswald, Germany	Drafting/revision of the manuscript for content, including medical writing for content; major role in the acquisition of data
<b>Reinhold Schmidt, MD</b>	Department of Neurology, Medical University of Graz, Austria	Drafting/revision of the manuscript for content, including medical writing for content; major role in the acquisition of data
<b>Hieab H.H. Adams, MD</b>	Department of Clinical Genetics, Erasmus MC, Rotterdam, the Netherlands; Department of Radiology and Nuclear Medicine, Erasmus MC, Rotterdam, the Netherlands; 1Latin American Brain Health (BrainLat), Universidad Adolfo Ibáñez, Santiago, Chile.	Drafting/revision of the manuscript for content, including medical writing for content; major role in the acquisition of data; Study concept or design; analysis or interpretation of data
<b>Meike W. Vernooij, PhD, MD</b>	Department of Radiology and Nuclear Medicine, Erasmus MC, Rotterdam, the Netherlands; 3. Department of Epidemiology, Erasmus MC, Rotterdam, the Netherlands	Drafting/revision of the manuscript for content, including medical writing for content; major role in the acquisition of data; Study concept or design; analysis or interpretation of data

## References

- Zhu YC, Dufouil C, Mazoyer B, et al. Frequency and location of dilated Virchow-Robin spaces in elderly people: a population-based 3D MR imaging study. *AJNR Am J Neuroradiol*. 2011;32(4):709-713.
- Hawkes CA, Gatherer M, Sharp MM, et al. Regional differences in the morphological and functional effects of aging on cerebral basement membranes and perivascular drainage of amyloid- $\beta$  from the mouse brain. *Aging Cell*. 2013;12(2):224-236.
- Gutierrez J, Rundek T, Ekind MSV, Sacco RL, Wright CB. Perivascular spaces are associated with atherosclerosis: an insight from the Northern Manhattan Study. *AJNR Am J Neuroradiol*. 2013;34(9):1711-1716.
- Wardlaw JM, Benveniste H, Nedergaard M, et al. Perivascular spaces in the brain: anatomy, physiology and pathology. *Nat Rev Neurol*. 2020;16(3):137-153.
- Douhal FN, MacLulich AMJ, Ferguson KJ, Dennis MS, Wardlaw JM. Enlarged perivascular spaces on MRI are a feature of cerebral small vessel disease. *Stroke*. 2010;41(3):450-454.
- Charidimou A, Meegahage R, Fox Z, et al. Enlarged perivascular spaces as a marker of underlying arteriopathy in intracerebral haemorrhage: a multicentre MRI cohort study. *J Neurol Neurosurg Psychiatry*. 2013;84(6):624-629.
- Debette S, Schilling S, Duperron MG, Larsson SC, Markus HS. Clinical significance of magnetic resonance imaging markers of vascular brain injury: a systematic review and meta-analysis. *JAMA Neurol*. 2019;76(1):81-94.
- Francis F, Ballerini L, Wardlaw JM. Perivascular spaces and their associations with risk factors, clinical disorders and neuroimaging features: a systematic review and meta-analysis. *Int J stroke: official J Int Stroke Soc*. 2019;14(4):359-371.

9. Lau KK, Li L, Lovelock CE, et al. Clinical correlates, ethnic differences, and prognostic implications of perivascular spaces in transient ischemic attack and ischemic stroke. *Stroke*. 2017;48(6):1470-1477.
10. Pappolla M, Sambamurti K, Vidal R, Pacheco-Quinto J, Poeggeler B, Matsubara E. Evidence for lymphatic A $\beta$  clearance in Alzheimer's transgenic mice. *Neurobiol Dis*. 2014;71:215-219.
11. Ramirez J, Berezuk C, McNeely AA, Scott CJM, Gao F, Black SE. Visible Virchow-Robin spaces on magnetic resonance imaging of Alzheimer's disease patients and normal elderly from the Sunnybrook Dementia Study. *J Alzheimer's Dis*. 2015;43(2):415-424.
12. Schick S, Gahlleitner A, Wober-Bingol C, et al. Virchow-Robin spaces in childhood migraine. *Neuroradiology*. 1999;41(4):283-287.
13. Achiron A, Faibel M. Sandlike appearance of Virchow-Robin spaces in early multiple sclerosis: a novel neuroradiologic marker. *AJNR Am J Neuroradiol*. 2002;23(3):376-380.
14. Granberg T, Moridi T, Brand JS, et al. Enlarged perivascular spaces in multiple sclerosis on magnetic resonance imaging: a systematic review and meta-analysis. *J Neurol*. 2020;267(11):3199-3212.
15. Zhang C, Chen Q, Wang Y, et al; Chinese IntraCranial AtheroSclerosis CICAS Study Group. Risk factors of dilated Virchow-Robin spaces are different in various brain regions. *PLoS One*. 2014;9(8):e105505.
16. Zhu YC, Tzourio C, Soumare A, Mazoyer B, Dufouil C, Chabriat H. Severity of dilated Virchow-Robin spaces is associated with age, blood pressure, and MRI markers of small vessel disease: a population-based study. *Stroke*. 2010;41(11):2483-2490.
17. MacLulich AMJ, Wardlaw JM, Ferguson KJ, Starr JM, Seckl JR, Deary IJ. Enlarged perivascular spaces are associated with cognitive function in healthy elderly men. *J Neurol Neurosurg Psychiatry*. 2004;75(11):1519-1523.
18. van Veluw SJ, Wisse LEM, Kuijff HJ, et al. Hippocampal T2 hyperintensities on 7Tesla MRI. *NeuroImage*. 2013;3:196-201.
19. Yao M, Zhu YC, Soumare A, et al. Hippocampal perivascular spaces are related to aging and blood pressure but not to cognition. *Neurobiol Aging*. 2014;35(9):2118-2125.
20. Passiak BS, Liu D, Kresge HA, et al. Perivascular spaces contribute to cognition beyond other small vessel disease markers. *Neurology*. 2019;92(12):e1309-e1321.
21. Laveskog A, Wang R, Vetrano DL, Bronge L, Wahlund LO, Qiu C. Associations of vascular risk factors and APOE genotype with perivascular spaces among community-dwelling older adults. *J Am Heart Assoc*. 2020;9(16):e015229.
22. Potter GM, Doubal FN, Jackson CA, et al. Enlarged perivascular spaces and cerebral small vessel disease. *Int J Stroke*. 2015;10(3):376-381.
23. Satizabal CL, Zhu Y-C, Dufouil C, Tzourio C. Inflammatory proteins and the severity of dilated Virchow-Robin spaces in the elderly. *J Alzheimer's Dis JAD*. 2013;33(2):323-328.
24. Vilor-Tejedor N, Ciampa I, Operto G, et al; ALFA study. Perivascular spaces are associated with tau pathophysiology and synaptic dysfunction in early Alzheimer's continuum. *Alzheimer's Res Ther*. 2021;13:135-213.
25. Duperron M-G, Tzourio C, Sargurupremraj M, et al. Burden of dilated perivascular spaces, an emerging marker of cerebral small vessel disease, is highly heritable. *Stroke*. 2018;49(2):282-287.
26. Debette S, Duperron MG, Knol M, et al. Genomics of perivascular space burden unravels early mechanisms of cerebral small vessel disease. *Research Square*. Preprint posted online October 21, 2021. doi.org/10.21203/rs.3.rs-963149/v1.
27. Adams HHH, Cavalieri M, Verhaaren BFJ, et al. Rating method for dilated Virchow-Robin spaces on magnetic resonance imaging. *Stroke*. 2013;44(6):1732-1735.
28. Dubost F, Yilmaz P, Adams H, et al. Enlarged perivascular spaces in brain MRI: automated quantification in four regions. *Neuroimage*. 2019;185:534-544.
29. Dubost F, Adams H, Yilmaz P, et al. Weakly supervised object detection with 2D and 3D regression neural networks. *Med Image Anal*. 2020;65:101767.
30. Adams HHH, Hilal S, Schwingsenschuh P, et al. A priori collaboration in population imaging: the Uniform Neuro-Imaging of Virchow-Robin Spaces Enlargement consortium. *Alzheimers Dement*. 2015;1(4):513-520.
31. Sudlow C, Gallacher J, Allen N, et al. UK biobank: an open access resource for identifying the causes of a wide range of complex diseases of middle and old age. *PLoS Med*. 2015;12(3):e1001779.
32. Ikram MA, Brusselle G, Ghanbari M, et al. Objectives, design and main findings until 2020 from the Rotterdam Study. *Eur J Epidemiol*. 2020;35(5):483-517.
33. Ikram MA, van der Lugt A, Niessen WJ, et al. The Rotterdam Scan Study: design update 2016 and main findings. *Eur J Epidemiol*. 2015;30(12):1299-1315.
34. Littlejohns TJ, Holliday J, Gibson LM, et al. The UK Biobank imaging enhancement of 100,000 participants: rationale, data collection, management and future directions. *Nat Commun*. 2020;11(1):2624.
35. Hilal S, Tan CS, Adams HHH, et al. Enlarged perivascular spaces and cognition: a meta-analysis of 5 population-based studies. *Neurology*. 2018;91(9):e832-e842.
36. Vermeer SE, Prins ND, den Heijer T, Hofman A, Koudstaal PJ, Breteler MMB. Silent brain infarcts and the risk of dementia and cognitive decline. *N Engl J Med*. 2003;348(13):1215-1222.
37. Vrooman HA, Cocosco CA, van der Lijn F, et al. Multi-spectral brain tissue segmentation using automatically trained k-Nearest-Neighbor classification. *Neuroimage*. 2007;37(1):71-81.
38. de Boer R, Vrooman HA, van der Lijn F, et al. White matter lesion extension to automatic brain tissue segmentation on MRI. *Neuroimage*. 2009;45(4):1151-1161.
39. Hilal S, Sikking E, Shaik MA, et al. Cortical cerebral microinfarcts on 3T MRI A novel marker of cerebrovascular disease. *Neurology*. 2016;87(15):1583-1590.
40. Fischl B, Salat DH, Busa E, et al. Whole brain segmentation: automated labeling of neuroanatomical structures in the human brain. *Neuron*. 2002;33(3):341-355.
41. van Sloten TT, Sigurdsson S, van Buchem MA, et al. Cerebral small vessel disease and association with higher incidence of depressive symptoms in a general elderly population: the AGES-Reykjavik Study. *Am J Psychiatry*. 2015;172(6):570-578.
42. Sacher J, Neumann J, Okon-Singer H, Gotowiec S, Villringer A. Sexual dimorphism in the human brain: evidence from neuroimaging. *Magn Reson Imaging*. 2013;31(3):366-375.
43. Barisano G, Sheikh-Bahaei N, Law M, Toga AW, Seppehrband F. Body mass index, time of day and genetics affect perivascular spaces in the white matter. *J Cereb Blood Flow Metab*. 2021;41(7):1563-1578.
44. Ogomori K, Kitamoto T, Tateishi J, Sato Y, Suetsugu M, Abe M. Beta-protein amyloid is widely distributed in the central nervous system of patients with Alzheimer's disease. *Am J Pathol*. 1989;134(2):243-251.
45. Thal DR, Rüb U, Orantes M, Braak H. Phases of A $\beta$ -deposition in the human brain and its relevance for the development of AD. *Neurology*. 2002;58(12):1791-1800.
46. Mast H, Thompson JLP, Lee S-H, Mohr JP, Sacco RL. Hypertension and diabetes mellitus as determinants of multiple lacunar infarcts. *Stroke*. 1995;26(1):30-33.
47. van Dijk EJ, Breteler MMB, Schmidt R, et al; CASCADE Consortium. The association between blood pressure, hypertension, and cerebral white matter lesions cardiovascular determinants of dementia study. *Hypertension*. 2004;44(5):625-630.
48. Sasaki M, Sone M, Ehara S, Tamakawa Y. Hippocampal sulcus remnant: potential cause of change in signal intensity in the hippocampus. *Radiology* 1993;188(3):743-746.
49. Eichner JE, Dunn ST, Perveen G, Thompson DM, Stewart KE, Stroehla BC. Apolipoprotein E polymorphism and cardiovascular disease: a HuGE review. *Am J Epidemiol*. 2002;155(6):487-495.
50. Bales KR, Dodart JC, DeMattos RB, Holtzman DM, Paul SM. Apolipoprotein E, amyloid, and Alzheimer disease. *Mol Interventions*. 2002;2(6):363-375, 339.



# Neurology®

## Determinants of Perivascular Spaces in the General Population: A Pooled Cohort Analysis of Individual Participant Data

Tavia E. Evans, Maria J. Knol, Petra Schwingenschuh, et al.

*Neurology* 2023;100:e107-e122 Published Online before print October 17, 2022

DOI 10.1212/WNL.0000000000201349

**This information is current as of October 17, 2022**

<b>Updated Information &amp; Services</b>	including high resolution figures, can be found at: <a href="http://n.neurology.org/content/100/2/e107.full">http://n.neurology.org/content/100/2/e107.full</a>
<b>References</b>	This article cites 49 articles, 14 of which you can access for free at: <a href="http://n.neurology.org/content/100/2/e107.full#ref-list-1">http://n.neurology.org/content/100/2/e107.full#ref-list-1</a>
<b>Citations</b>	This article has been cited by 1 HighWire-hosted articles: <a href="http://n.neurology.org/content/100/2/e107.full##otherarticles">http://n.neurology.org/content/100/2/e107.full##otherarticles</a>
<b>Subspecialty Collections</b>	This article, along with others on similar topics, appears in the following collection(s): <b>Cohort studies</b> <a href="http://n.neurology.org/cgi/collection/cohort_studies">http://n.neurology.org/cgi/collection/cohort_studies</a> <b>MRI</b> <a href="http://n.neurology.org/cgi/collection/mri">http://n.neurology.org/cgi/collection/mri</a> <b>Other cerebrovascular disease/ Stroke</b> <a href="http://n.neurology.org/cgi/collection/other_cerebrovascular_disease__stroke">http://n.neurology.org/cgi/collection/other_cerebrovascular_disease__stroke</a> <b>Risk factors in epidemiology</b> <a href="http://n.neurology.org/cgi/collection/risk_factors_in_epidemiology">http://n.neurology.org/cgi/collection/risk_factors_in_epidemiology</a>
<b>Permissions &amp; Licensing</b>	Information about reproducing this article in parts (figures, tables) or in its entirety can be found online at: <a href="http://www.neurology.org/about/about_the_journal#permissions">http://www.neurology.org/about/about_the_journal#permissions</a>
<b>Reprints</b>	Information about ordering reprints can be found online: <a href="http://n.neurology.org/subscribers/advertise">http://n.neurology.org/subscribers/advertise</a>

*Neurology*® is the official journal of the American Academy of Neurology. Published continuously since 1951, it is now a weekly with 48 issues per year. Copyright © 2022 The Author(s). Published by Wolters Kluwer Health, Inc. on behalf of the American Academy of Neurology. All rights reserved. Print ISSN: 0028-3878. Online ISSN: 1526-632X.

