

Teaching NeuroImage: Primitive Drainage Pattern of Basal Vein of Rosenthal

An Underrecognized Cause of Perimesencephalic Subarachnoid Hemorrhage

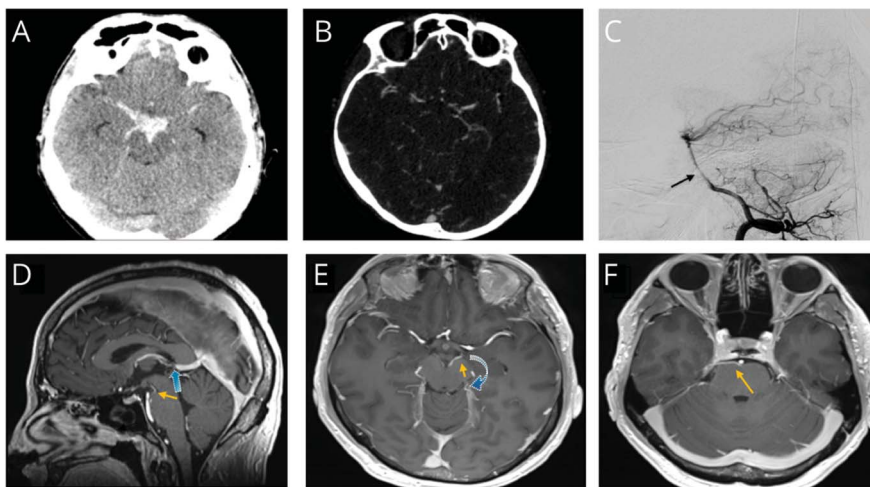
Konstantinos Melanis, MD, Maria-Ioanna Stefanou, MD, Ioanna Tsantzali, MD, Efi Tsomaka, MD, Maria Chondrogianni, MD, Eleni Bakola, MD, Elizabeth Andreadou, MD, Stefanos Lachanis, MD, and Georgios Tsivgoulis, MD

Correspondence

Dr. Tsivgoulis
tsivgoulisgiorg@yahoo.gr

Neurology® 2022;99:127-128. doi:10.1212/WNL.0000000000200777

Figure 1 Imaging Findings of a Patient With Perimesencephalic Subarachnoid Hemorrhage Due to Primitive Drainage of BVR



Noncontrast axial brain CT scan on admission shows hyperdense signal in the basal cistern corresponding to perimesencephalic subarachnoid hemorrhage (A). No evidence of aneurysm is depicted on axial CT angiography (B). Sagittal DSA shows a severe basilar artery vasospasm (black arrow) (C), but no evidence of aneurysm or venous anomalies (venous phase of DSA not shown). At the 1-month follow-up, HR-MRI in sagittal plane of 3D T1 MP RAGE sequence shows a discontinuous drainage of BVR (yellow arrow) to the vein of Galen (blue arrow) (D). In the axial plane of the same sequence, veins of the interpeduncular cistern drain to the left BVR (yellow arrow). Note that the BVR does not follow its typical course to drain to the vein of Galen (blue arrow indicates the normal course of BVR), and this finding corresponds to a primitive BVR variant (E). Following the course of BVR at the pontine level (yellow arrow), we note drainage to the right tentorial sinus (F). Of note, that following the resolution of basilar artery vasospasm at the 1-month follow-up, no evidence of underlying aneurysm was detected on magnetic resonance angiography (images not shown). BVR = basal vein of Rosenthal; DSA = digital subtraction angiography; HR-MRI = high-resolution MRI.

A previously healthy 43-year-old man presented with coital thunderclap headache. A brain CT scan revealed a perimesencephalic subarachnoid hemorrhage (PMSAH). Digital subtraction angiography (DSA) showed a severe basilar artery vasospasm without underlying aneurysm (Figure 1). Under nimodipine treatment, the vasospasm resolved gradually. At a 1-month follow-up, a high-resolution (3T) MRI (HR-MRI) uncovered a primitive left basal vein of Rosenthal (BVR) draining to the lateral mesencephalic veins instead of the Galenic system.¹

Approximately one-half of nonaneurysmal PMSAH are associated with primitive venous drainage variants (Figure 2).² These variants have been linked to hemodynamic perturbations, inducing retrograde flow, abrupt pressure changes and venous rupture, resulting in PMSAH.² Patients with BVR harbor a 4-fold increased risk of nonaneurysmal PMSAH compared with aneurysmal SAH.¹

MORE ONLINE

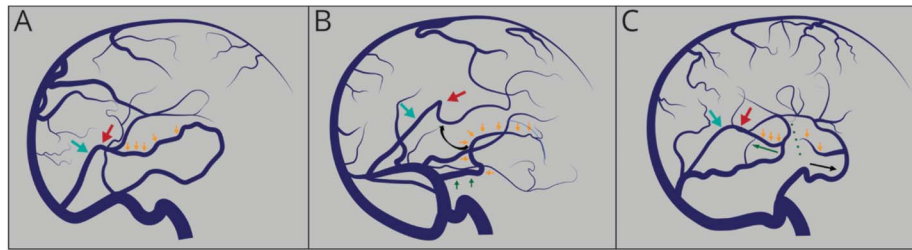
Teaching slides

links.lww.com/WNL/C45

From the Second Department of Neurology (K.M., M.-I.S., I.T., E.T., M.C., E.B., G.T.), National and Kapodistrian University of Athens, School of Medicine, "Attikon" University Hospital; First Department of Neurology (E.A.), National & Kapodistrian University of Athens, School of Medicine, "Eginition" University Hospital; and Iatropolis Magnetic Resonance Diagnostic Centre (S.L.), Athens, Greece.

Go to Neurology.org/N for full disclosures. Funding information and disclosures deemed relevant by the authors, if any, are provided at the end of the article.

Figure 2 Different Variants of BVR Drainage



Sagittal view of brain venogram: BVR (orange arrow), vein of Galen (red arrow), and straight sinus (light green). In Panel A, there is continuous drainage of BVR into the vein of Galen (typical continuous type). Panel B illustrates a primitive drainage of BVR, such as in our case, which is associated with perimesencephalic subarachnoid hemorrhage. BVR does not follow its typical course to the vein of Galen (black curved arrow). The anterior part (orange arrow) drains to the petrosal sinus (dark green arrows), whereas the middle and posterior parts are missing. Disturbed venous drainage results in increased retrograde venous pressure, which eventually results in subarachnoid hemorrhage. Panel C illustrates another BVR anatomical variant (not observed in our patient) associated with subarachnoid hemorrhage. Discontinuous drainage of BVR is noted (dotted line), with the anterior part (black arrow) draining to the cavernous sinus, while the posterior part (dark green) drains to the vein of Galen. BVR = basal vein of Rosenthal.

Given the frequent unavailability of venous phase DSA, HR-MRI should be considered for the evaluation of primitive BVR and underlying venous anomalies in PMSAH. In patients with typical PMSAH, identification of primitive BVR by HR-MRI provides an underlying etiopathogenetic mechanism that may render a repeat DSA redundant.¹

Study Funding

No targeted funding reported.

Disclosure

The authors report no disclosures relevant to the manuscript. Go to Neurology.org/N for full disclosures.

Publication History

Received by *Neurology* January 4, 2022. Accepted in final form April 11, 2022. Submitted and externally peer reviewed. The handling editor was Roy Strowd III, MD, Med, MS.

Appendix Authors

Name	Location	Contribution
Konstantinos Melanis, MD	Second Department of Neurology, National and Kapodistrian University of Athens, School of Medicine, "Attikon" University Hospital	Drafting/revision of the article for content, including medical writing for content; major role in the acquisition of data; study concept or design; and analysis or interpretation of data
Maria-Ioanna Stefanou, MD	Second Department of Neurology, National and Kapodistrian University of Athens, School of Medicine, "Attikon" University Hospital	Drafting/revision of the article for content, including medical writing for content; major role in the acquisition of data; study concept or design; and analysis or interpretation of data
Ioanna Tsantzali, MD	Second Department of Neurology, National and Kapodistrian University of Athens, School of Medicine, "Attikon" University Hospital	Drafting/revision of the article for content, including medical writing for content; analysis or interpretation of data

Appendix (continued)

Name	Location	Contribution
Efi Tsomaka, MD	Second Department of Neurology, National and Kapodistrian University of Athens, School of Medicine, "Attikon" University Hospital	Drafting/revision of the article for content, including medical writing for content; analysis or interpretation of data
Maria Chondrogianni, MD	Second Department of Neurology, National and Kapodistrian University of Athens, School of Medicine, "Attikon" University Hospital	Drafting/revision of the article for content, including medical writing for content; analysis or interpretation of data
Eleni Bakola, MD	Second Department of Neurology, National and Kapodistrian University of Athens, School of Medicine, "Attikon" University Hospital	Drafting/revision of the article for content, including medical writing for content; analysis or interpretation of data
Elizabeth Andreadou, MD	First Department of Neurology, National & Kapodistrian University of Athens, School of Medicine, "Eginition" University Hospital	Drafting/revision of the article for content, including medical writing for content; analysis or interpretation of data
Stefanos Lachanis, MD	Iatropolis Magnetic Resonance Diagnostic Centre, Athens, Greece	Drafting/revision of the article for content, including medical writing for content; analysis or interpretation of data
Georgios Tsvigoulis, MD	Second Department of Neurology, National and Kapodistrian University of Athens, School of Medicine, "Attikon" University Hospital	Drafting/revision of the article for content, including medical writing for content; major role in the acquisition of data; study concept or design; and analysis or interpretation of data

References

1. Rouchaud A, Lehman VT, Murad MH, et al. Nonaneurysmal perimesencephalic hemorrhage is associated with deep cerebral venous drainage anomalies: a systematic literature review and meta-analysis. *AJNR Am J Neuroradiol*. 2016;37(9):1657-1663.
2. van der Schaaf IC, Velthuis BK, Gouw A, Rinkel GJ. Venous drainage in perimesencephalic hemorrhage. *Stroke*. 2004;35(7):1614-1618.

Neurology®

Teaching NeuroImage: Primitive Drainage Pattern of Basal Vein of Rosenthal: An Underrecognized Cause of Perimesencephalic Subarachnoid Hemorrhage

Konstantinos Melanis, Maria-Ioanna Stefanou, Ioanna Tsantzali, et al.
Neurology 2022;99;127-128 Published Online before print May 18, 2022
DOI 10.1212/WNL.0000000000200777

This information is current as of May 18, 2022

Updated Information & Services	including high resolution figures, can be found at: http://n.neurology.org/content/99/3/127.full
References	This article cites 2 articles, 2 of which you can access for free at: http://n.neurology.org/content/99/3/127.full#ref-list-1
Subspecialty Collections	This article, along with others on similar topics, appears in the following collection(s): All Cerebrovascular disease/Stroke http://n.neurology.org/cgi/collection/all_cerebrovascular_disease_stroke All Clinical Neurology http://n.neurology.org/cgi/collection/all_clinical_neurology Subarachnoid hemorrhage http://n.neurology.org/cgi/collection/subarachnoid_hemorrhage
Permissions & Licensing	Information about reproducing this article in parts (figures, tables) or in its entirety can be found online at: http://www.neurology.org/about/about_the_journal#permissions
Reprints	Information about ordering reprints can be found online: http://n.neurology.org/subscribers/advertise

Neurology® is the official journal of the American Academy of Neurology. Published continuously since 1951, it is now a weekly with 48 issues per year. Copyright © 2022 American Academy of Neurology. All rights reserved. Print ISSN: 0028-3878. Online ISSN: 1526-632X.

