

José G. Merino, MD, MPhil, Editor-in-Chief, *Neurology*®



Notable in *Neurology* This Week

This issue features an article that investigates racial disparities in stroke recurrence; another reports on the long-term clinical outcomes of rituximab treatment in patients with neuromyelitis optica spectrum disorder and MOG antibody disease. A featured Contemporary Issues in Practice, Education, & Research discusses best practices of handling sensitive information regarding preclinical Alzheimer disease in the electronic health record.

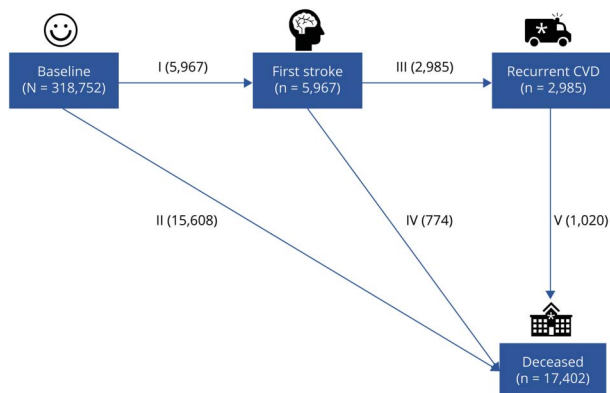
Research Articles

***APOE* Alleles With Tau and A β Pathology in Patients With Amyotrophic Lateral Sclerosis and Parkinsonism-Dementia Complex in the Kii Peninsula**

Researchers analyzed *APOE* polymorphisms in 18 autopsy patients with amyotrophic lateral sclerosis (ALS) and parkinsonism-dementia complex (PDC) in the Kii peninsula of Japan and revealed the relationship between *APOE* polymorphisms and tau pathology. Their findings suggested that the *APOE* ϵ 2 allele is associated with increased tau pathology in patients with Kii ALS/PDC.

Page 978

Air Pollution Associated With Incident Stroke, Poststroke Cardiovascular Events, and Death: A Trajectory Analysis of a Prospective Cohort

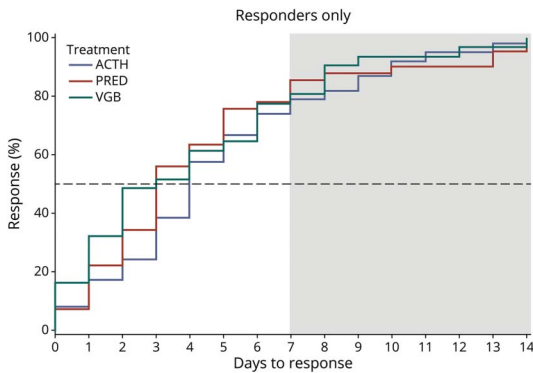


Air pollution is a risk factor of stroke. This study reported that air pollution was associated with dynamic transitions from healthy state to stroke, poststroke cardiovascular events, and death, with a stronger effect for transition from health to stroke. Efforts to reduce exposures may be most beneficial to primary stroke prevention.

Page 982

Continued

Association of Time to Clinical Remission With Sustained Resolution in Children With New-Onset Infantile Spasms



This prospective, observational study followed children aged 2–24 months with new-onset infantile spasms treated with standard therapy. Treatment response occurred within 7 days for most patients with infantile spasms, suggesting that clinicians should reassess infantile spasms treatment at 1 week to determine whether additional treatment is necessary.

[Page 984](#)

Investigating Functional Network Abnormalities and Associations With Disability in Multiple Sclerosis

In this multicenter cross-sectional study, centrality analysis captured reconfiguration and topography changes of functional networks that were continuously occurring in multiple sclerosis. In this disease, centrality was reduced in sensorimotor and salience networks, and it increased in the default-mode network, with specific findings for phenotype and disability. Centrality may be a valuable marker for multiple sclerosis severity.

[Page 986](#)

NB: “A 23-Year-Old Woman Presenting With Cognitive Impairment and Gait Disturbance,” p. 997. To check out other Resident & Fellow Section Clinical Reasoning articles, point your browser to [Neurology.org/N](https://www.neurology.org/N) and click on the link to the Resident & Fellow Section. At the end of the issue, check out the Resident & Fellow Section Pearls & Oysters article discussing eastern equine encephalitis in an immunocompromised patient. This week also includes a Resident & Fellow Section Teaching NeuroImage titled “Primary Familial Brain Calcification in SLC20A2 Genotype.”

NEW EPISODE

Neurology[®]
PODCAST



Listen and Learn on the Go With the **Neurology**[®] Podcast!

Access from your smart speaker, car, or just about anywhere. Download, subscribe, and rate/review the *Neurology* Podcast wherever you enjoy your podcasts. Head to [Neurology.libsyn.com/website](https://www.neurology.org/libsyn) for the full list of past episodes.

Neurology[®]

Spotlight on the November 29 Issue

José G. Merino

Neurology 2022;99:971-972

DOI 10.1212/WNL.0000000000201406

This information is current as of November 28, 2022

Updated Information & Services

including high resolution figures, can be found at:
<http://n.neurology.org/content/99/22/971.full>

Permissions & Licensing

Information about reproducing this article in parts (figures, tables) or in its entirety can be found online at:
http://www.neurology.org/about/about_the_journal#permissions

Reprints

Information about ordering reprints can be found online:
<http://n.neurology.org/subscribers/advertise>

Neurology® is the official journal of the American Academy of Neurology. Published continuously since 1951, it is now a weekly with 48 issues per year. Copyright © 2022 American Academy of Neurology. All rights reserved. Print ISSN: 0028-3878. Online ISSN: 1526-632X.

