

Associations of Prestroke Physical Activity With Stroke Severity and Mortality After Intracerebral Hemorrhage Compared With Ischemic Stroke

Adam Viktorisson, MD, Dongni Buvarp, MD, PhD, Malin Reinholdsson, PT, Anna Danielsson, PT, PhD, Annie Palstam, PT, PhD, and Katharina Stibrant Sunnerhagen, MD, PhD

Neurology® 2022;99:e2137–e2148. doi:10.1212/WNL.0000000000201097

Correspondence

Dr. Viktorisson

adam.viktorisson@gu.se

Abstract

Background and Objectives

Prestroke physical activity may protect the brain from severe consequences of stroke. However, previous studies on this subject included mainly ischemic stroke cases, and the association between prestroke physical activity and outcomes after intracerebral hemorrhage is uncertain. Therefore, we sought to examine the associations between prestroke physical activity, stroke severity, and all-cause mortality after intracerebral hemorrhage in comparison with ischemic stroke.

Methods

This was a longitudinal, register-based cohort study. All adult patients with intracerebral hemorrhage or ischemic stroke admitted to 3 stroke units in Gothenburg, Sweden, between November 1, 2014, and June 30, 2019, were screened for inclusion. Physical activity was defined as light physical activity ≥ 4 h/wk or moderate physical activity ≥ 2 h/wk the year before stroke. Stroke severity was assessed on admission using the NIH Stroke Scale. All-cause mortality rates were followed up to 7 years, from the time of incident stroke until death or censoring. Ordinal logit models and Cox proportional hazards models were used to estimate adjusted associations of prestroke physical activity.

Results

We included 763 patients with intracerebral hemorrhage and 4,425 with ischemic stroke. Prestroke physical activity was associated with less severe strokes by an adjusted odds ratio of 3.57 (99% CI 2.35–5.47) for intracerebral hemorrhages and 1.92 (99% CI 1.59–2.33) for ischemic strokes. During a median follow-up of 4.7 (interquartile range 3.5–5.9) years, 48.5% of patients with intracerebral hemorrhage died, compared with 37.5% with ischemic stroke. Prestroke physical activity was associated with decreased short-term mortality (0–30 days) by an adjusted hazard ratio of 0.30 (99% CI 0.17–0.54) after intracerebral hemorrhage and 0.22 (99% CI 0.13–0.37) after ischemic stroke. Prestroke physical activity was further associated with decreased long-term mortality (30 days–2 years) by an adjusted hazard ratio of 0.40 (99% CI 0.21–0.77) after intracerebral hemorrhage and 0.49 (99% CI 0.38–0.62) after ischemic stroke.

Discussion

Prestroke physical activity was associated with decreased stroke severity and all-cause mortality after intracerebral hemorrhage and ischemic stroke, independent of other risk factors. Based on current knowledge, health care professionals should promote physical activity as part of primary stroke prevention.

From the Institute of Neuroscience and Physiology (A.V., D.B., M.R., A.D., A.P., K.S.S.), Rehabilitation Medicine, Sahlgrenska Academy, University of Gothenburg, and the Sahlgrenska University Hospital; Department of Occupational Therapy and Physiotherapy (M.R.), Sahlgrenska University Hospital; Institute of Neuroscience and Physiology (A.D.), Department of Health and Rehabilitation, Sahlgrenska Academy, University of Gothenburg; and School of Health and Welfare (A.P.), Dalarna University, Falun, Sweden.

Go to [Neurology.org/N](https://www.neurology.org/N) for full disclosures. Funding information and disclosures deemed relevant by the authors, if any, are provided at the end of the article.

The Article Processing Charge was funded by the authors.

This is an open access article distributed under the terms of the Creative Commons Attribution License 4.0 (CC BY), which permits unrestricted use, distribution, and reproduction in any medium, provided the original work is properly cited.

Glossary

aHR = adjusted hazard ratio; **aOR** = adjusted odds ratio; **CVD** = cerebrovascular disease; **IQR** = interquartile range; **NIHSS** = NIH Stroke Scale; **PAPSIGOT** = physical activity prestroke in Gothenburg; **SGPALS** = Saltin-Grimby Physical Activity Level Scale.

The health benefits of physical activity are significant, and there is a dose-response relationship between the volume of physical activity and risk of cardiovascular morbidity and mortality.^{1,2} Regular physical activity serves as an important component in the primary and secondary prevention of stroke^{3,4} and counteracts several cerebrovascular risk factors.^{5,6} However, the association between prestroke physical activity and outcomes after stroke is not well established. Prestroke physical activity has been associated with reduced stroke severity,⁷⁻¹² in-hospital mortality,¹² cardiovascular mortality,¹³ and all-cause mortality.¹³⁻¹⁶ Contrarily, some previous studies found no association between prestroke physical activity and stroke severity or poststroke mortality, after covariate adjustment.¹⁷⁻¹⁹ Moreover, the relationship between prestroke physical activity and poststroke outcomes has been studied only in samples with most ischemic stroke cases. No previous study has investigated the association between prestroke physical activity and stroke severity or the risk of mortality for intracerebral hemorrhage.²⁰

Nontraumatic intracerebral hemorrhage is a spontaneous bleeding within the brain parenchyma and usually a long-term consequence of arterial hypertension or cerebral amyloid angiopathy.²¹ It is the most lethal type of stroke, with early mortality rates greater than 40% and no trend toward improvement in recent decades.²² The global socioeconomic consequences of intracerebral hemorrhages are significant, and the incidence is particularly high in low-income populations.²³ Modifiable predictors of outcomes after intracerebral hemorrhage are scarce, and there is no largely applicable intervention that can improve the outcome for those affected.²⁴ Regular physical activity decreases the risk of intracerebral hemorrhage,²⁵ prevents small vessel disease through decreased arterial blood pressure,²⁶ and could potentially lower levels of circulating beta-amyloid.²⁷ Recent preclinical data also suggest that preconditioning physical activity reduces hematoma volume and facilitates recovery after induced intracerebral hemorrhage in mice.²⁸

The physical activity prestroke in Gothenburg (PAPSIGOT) is a register-based project that investigates the association between physical activity and outcomes after stroke (Swedish registry of trials number: 246671). In this study, we investigated the associations between prestroke physical activity, stroke severity, and all-cause mortality in patients with intracerebral hemorrhage compared with patients with ischemic stroke.

Methods

Standard Protocol Approvals, Registrations, and Patient Consents

This study was approved by the Regional Ethical Board of Gothenburg on May 4, 2016 (registration number: 346-16)

and by the Swedish Ethical Review Authority in 2021 (registration number: 2021-03324). Research using quality registers (Väststroke and Riksstroke) are exempt from the general rule of patient consent according to the Swedish Personal Data Act (Swedish law No. SFS 1998:204), but patients are informed about the possibility to opt out from the registers. The Swedish Personal Data Act also allows data from medical records to be collected for quality control, without receiving written informed consent.

Data Collection

In this longitudinal, register-based cohort study, we collected data on all adult patients with intracerebral hemorrhage admitted to 3 stroke units between November 1, 2014, and June 30, 2019. We also included all adult patients with ischemic stroke treated during this period, with complete data on corresponding variables to patients with intracerebral hemorrhage. Stroke cases were identified in the Väststroke register, which includes data from routine clinical work on all patients treated for stroke within the Sahlgrenska University Hospital in Gothenburg, Sweden. Identified stroke cases were cross-referenced with inpatient medical records to ensure reliability and reduce missing data. We reviewed and included assessments of stroke characteristics, physical activity, smoking status, and comorbidities diagnosed on hospital arrival. Additional stroke characteristics were collected from the National Swedish Stroke Register (Riksstroke). Socioeconomic variables were collected from the Swedish Longitudinal Integrated Database for Health Insurance and Labor Market Studies. Prestroke comorbidities were collected from the National Patient Registry. Survival rates were collected from the Swedish Cause of the Death Register. Data merging with national registries were performed by the National Board of Health and Welfare using the personal identity numbers that are provided to all residents in Sweden at birth or shortly after immigration. Patients with a nonspecified stroke (i.e., no radiology), unavailable medical records, or lacking a Swedish personal identity number were excluded. A follow-up of poststroke survival continued until October 19, 2021. The study adheres to the REporting of studies Conducted using Observational Routinely collected health Data statement.²⁹

Outcomes

Admission stroke severity was assessed using the NIH Stroke Scale (NIHSS).³⁰ Higher NIHSS scores indicate greater stroke severity, with a maximum score of 42. The NIHSS scores were categorized as severe (>14), moderate (5–14), or mild (0–4). The NIHSS scores were assessed using medical records for cases with missing data, based on the first neurologic examination at the hospital, before any documented intervention.³¹ Patients in a comatose state, for which a

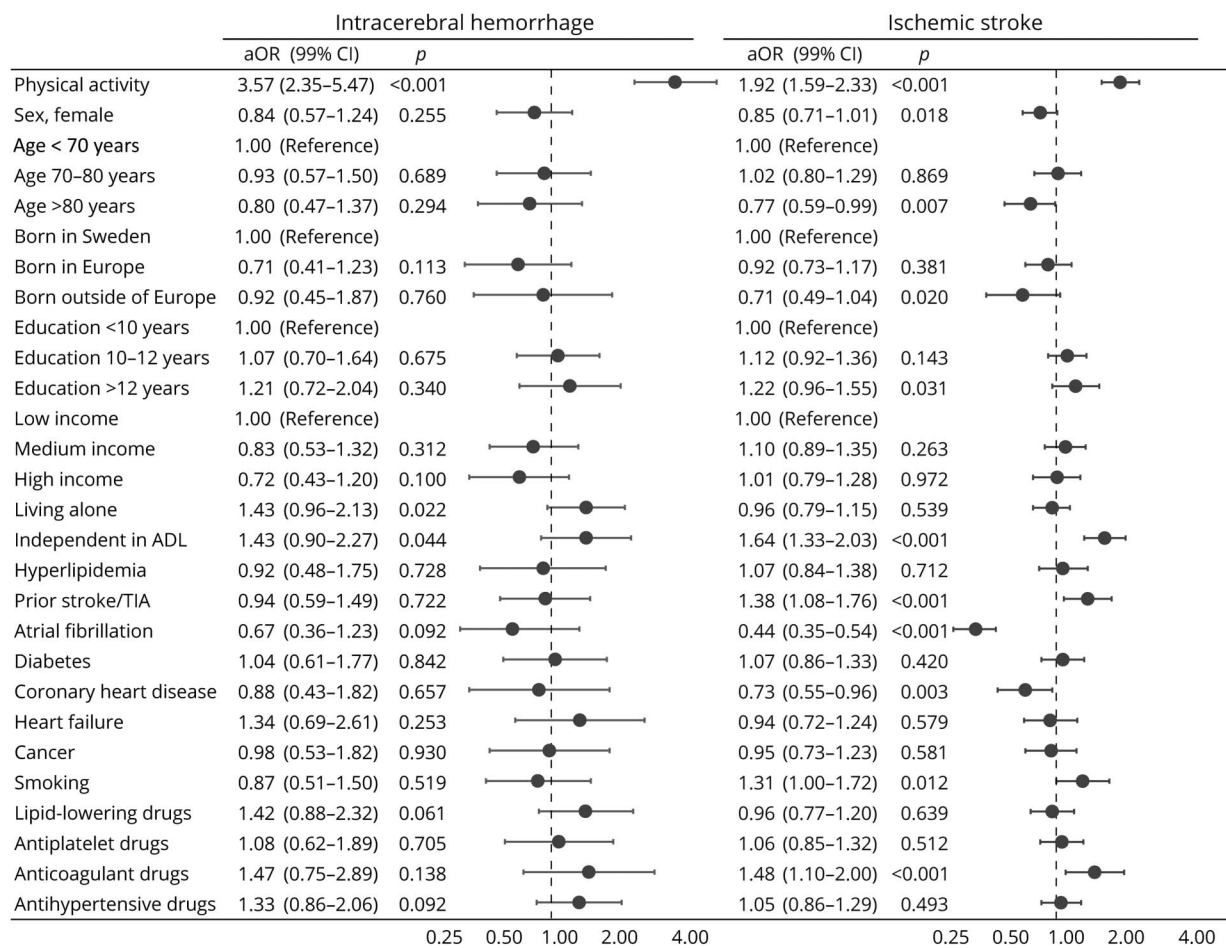
Table 1 Prestroke Characteristics Stratified by Physical Activity

Prestroke physical activity	Intracerebral hemorrhage		Ischemic stroke	
	No physical activity (n = 475)	Physical activity (n = 288)	No physical activity (n = 2,514)	Physical activity (n = 1,911)
Sex, female	254 (53.5)	111 (38.5)	1,353 (53.8)	745 (39.0)
Age younger than 70 y	129 (27.2)	131 (45.5)	618 (24.6)	791 (41.4)
Age 70–80 y	134 (28.2)	93 (32.3)	716 (28.5)	693 (36.3)
Age older than 80 y	212 (44.6)	64 (22.2)	1,180 (46.9)	427 (22.3)
Born in Sweden	368 (77.5)	234 (81.3)	1,988 (79.1)	1,544 (80.8)
Born in Europe	68 (14.3)	30 (10.4)	396 (15.8)	252 (13.2)
Born outside of Europe	39 (8.2)	24 (8.3)	130 (5.2)	115 (6.0)
Education <10 y	201 (42.3)	80 (27.8)	1,037 (41.2)	532 (27.8)
Education 10–12 y	184 (38.7)	132 (45.8)	984 (39.1)	762 (39.9)
Education >12 y	90 (18.9)	76 (26.4)	493 (19.6)	617 (32.3)
Low income	179 (37.7)	71 (24.7)	1,004 (39.9)	475 (24.9)
Medium income	171 (36.0)	100 (34.7)	875 (34.8)	583 (30.5)
High income	125 (26.3)	117 (40.6)	635 (25.3)	853 (44.6)
Living alone	246 (51.8)	105 (36.5)	1,494 (59.4)	734 (38.4)
Independent in ADL	296 (62.3)	265 (92.0)	1,641 (65.3)	1,820 (95.2)
Hyperlipidemia	58 (12.2)	23 (8.0)	425 (16.9)	303 (15.9)
Obesity (BMI >30 kg/m ²)	13 (2.7)	0 (0)	95 (3.8)	48 (2.5)
Previous stroke/TIA	127 (26.7)	47 (16.3)	467 (18.6)	271 (14.2)
Atrial fibrillation	140 (29.5)	44 (15.3)	812 (32.3)	378 (19.8)
Diabetes	90 (18.9)	26 (9.0)	665 (26.5)	318 (16.6)
Coronary heart disease	42 (8.8)	16 (5.6)	353 (14.0)	176 (9.2)
Heart failure	57 (12.0)	14 (4.9)	353 (14.0)	144 (7.5)
Dementia	25 (5.3)	5 (1.7)	152 (6.0)	33 (1.7)
Cancer	48 (10.1)	21 (7.3)	325 (12.9)	191 (10.0)
Depression	29 (6.1)	9 (3.1)	185 (7.4)	55 (2.9)
Psychotic disorder	6 (1.3)	1 (0.3)	36 (1.4)	6 (0.3)
Alcohol disorder	19 (4.0)	10 (3.5)	78 (3.1)	36 (1.9)
Drug abuse	10 (2.1)	3 (1.0)	18 (0.7)	18 (0.9)
Smoking	75 (15.8)	34 (11.8)	346 (13.8)	219 (11.5)
Lipid-lowering drugs	125 (26.3)	73 (25.3)	683 (27.2)	466 (24.4)
Antiplatelet drugs	88 (18.5)	44 (15.3)	694 (27.6)	432 (22.6)
Anticoagulant drugs	111 (23.4)	38 (13.2)	335 (13.3)	161 (8.4)
Antihypertensive drugs	340 (71.6)	134 (46.5)	1,783 (70.9)	1,106 (57.9)

Abbreviations: ADL = activities in daily living; BMI = body mass index; TIA = transient ischemic attack.

Variables in table with imputed data due to missing observations: Saltin-Grimby Physical Activity Level Scale, education, income, living situation, dependency, lipid-lowering drugs, antiplatelet drugs, anticoagulant drugs, and antihypertensive drugs.

Figure 1 Associations Between Covariates and Lower Stroke Severity



Multivariate ordinal logit models predicting less severe stroke symptoms (NIHSS scores 0–4 vs 5–14 or >14) for patients with intracerebral hemorrhage and ischemic stroke. aOR = adjusted odds ratio; NIHSS = NIH Stroke Scale; TIA = transient ischemic attack. Adjusted associations from models including prestroke physical activity, sex, age, country of birth, education, income, living situation, dependency, hyperlipidemia, previous stroke/TIA, atrial fibrillation, diabetes, coronary heart disease, heart failure, cancer, smoking, lipid-lowering drugs, antiplatelet drugs, anticoagulant drugs, and antihypertensive drugs.

complete neurologic examination was not possible, were categorized as having a severe stroke. All-cause mortality and cerebrovascular disease (CVD) as underlying causes of death were recorded for all included patients. CVD was defined according to the International Statistical Classification of Diseases and Related Health Problems, Tenth Revision codes (I60–I69). The follow-up time for survival was measured from the time of incident stroke until death or censoring on October 19, 2021, allowing for a minimum follow-up of >2 years. Short-term mortality was defined as 0–30 days and long-term mortality as 30 days to 2 years.

Prestroke Physical Activity

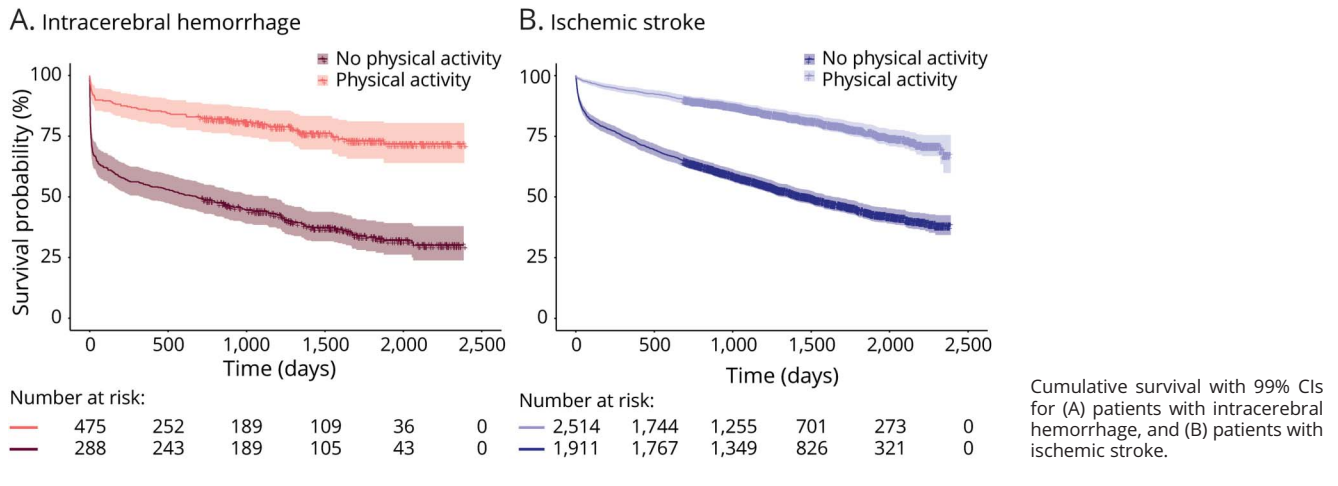
Physical activity was defined as light physical activity ≥ 4 h/wk or moderate physical activity ≥ 2 h/wk during the year before stroke, using the Saltin-Grimby Physical Activity Level Scale (SGPALS).^{32,33} Light physical activity includes activities such as bicycling, walking, gardening, or bowling, in the SGPALS; whereas moderate physical activity includes activities such as running, swimming, gymnastics, or playing tennis. The

assessments were performed by physiotherapists working at the included stroke units. Information on prestroke physical activity was collected from a next of kin if the patient had impaired cognition or was unconscious. For cases with missing data on SGPALS in the Väststroke register, assessments were based on available information from medical records. Patients who were unable to move freely indoors before the stroke were always categorized as inactive.

Definition of Covariates

All covariates were recorded during incident stroke and included sex, age, country of birth, education, income, living situation, independence in activities of daily living, smoking, alcohol disorder, drug abuse, comorbidities, and prestroke medical treatments. Income was defined as household income during the year before the stroke and congregated in tertiles. Educational level was defined as the highest completed stage, trichotomized in <10 years (primary school), 10–12 years (secondary school), and >12 years (postsecondary or university education). Smoking was defined as current smoking

Figure 2 Kaplan-Meier Curves for Poststroke Survival Stratified by Physical Activity



or absence of smoking for <1 year. If smoking status was not recorded in the registries or medical records, the patient was considered a nonsmoker. Prestroke comorbidities and medications accounted for are listed in eTables 1 and 2 (links.lww.com/WNL/C265).

The Charlson Comorbidity Index

The Charlson comorbidity index was calculated for each patient during incident stroke.³⁴ It is a weighted score validated to predict the risk of 1-year mortality for hospitalized patients, based on specific comorbid conditions. Survival rates were stratified using Charlson comorbidity index scores in groups with no comorbidity (0 points), mild comorbidity (1–2 points), and severe comorbidity (>2 points).

Statistical Analysis

A priori power calculation was performed to estimate the required period for data collection and has been previously published.³⁵ The calculation was based on NIHSS scores trichotomized in 3 groups.¹⁰ We calculated that a sample size of >628 patients with intracerebral hemorrhage would be sufficient for analyses at an alpha level of 0.01 with 0.8 power.

Descriptive statistics for patients with missing observations are summarized in eTable 3 (links.lww.com/WNL/C265). Missing observations were handled using predictive mean matching, implemented for multiple imputation by chained equations.³⁶ Each variable was imputed through an iterative series of predictive models for ordered categorical data. All covariates and outcome variables were included in each model. However, separate imputation models were used for patients with intracerebral hemorrhage and ischemic stroke.

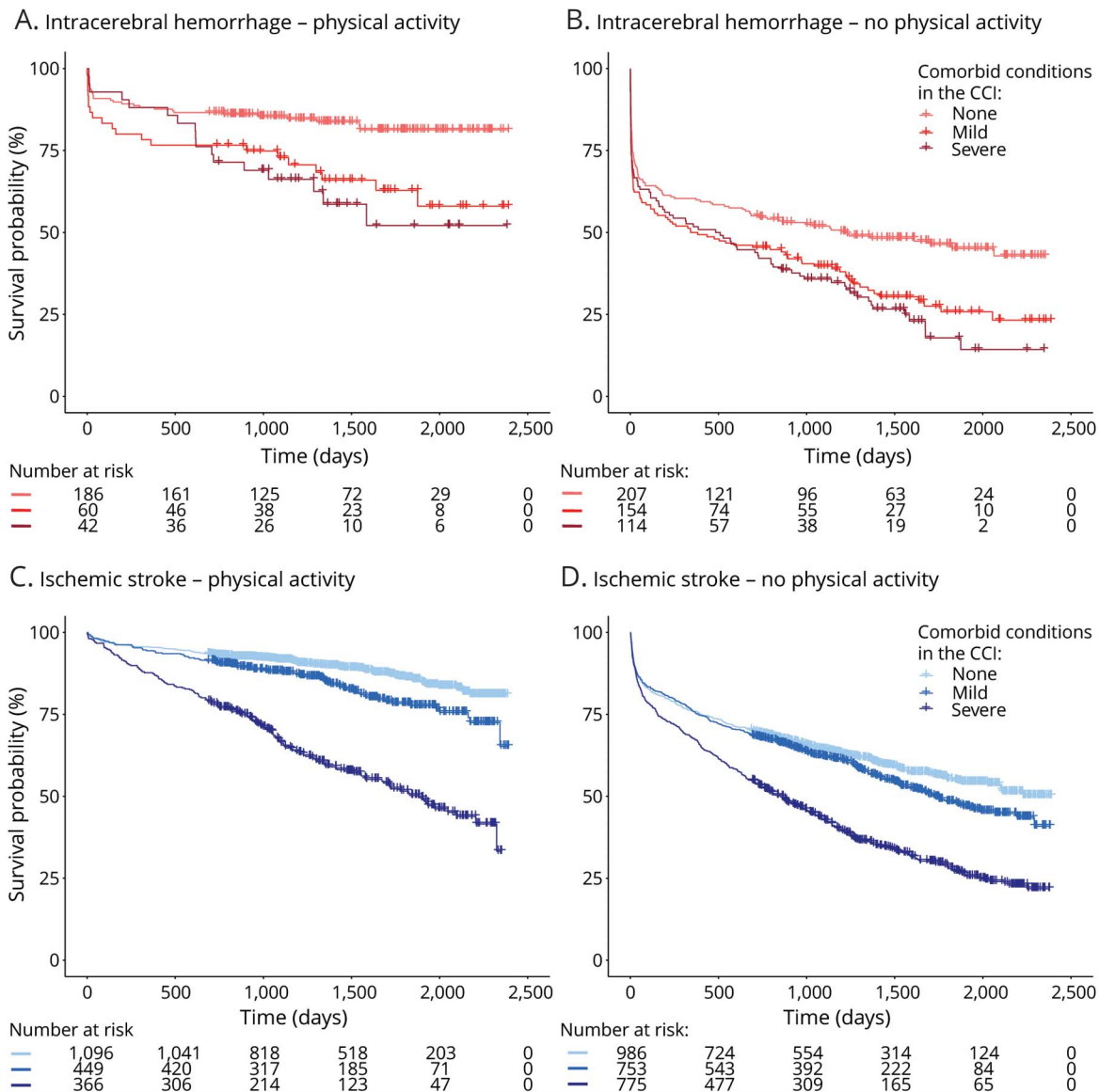
Descriptive data are presented as counts and proportions for categorical variables or median with interquartile range (IQR) for ordinal variables. Multicollinearity was assessed using the Spearman rank correlation for ordinal variables and the Phi coefficient for nominal variables. Adjusted associations between prestroke physical activity and admission stroke severity (NIHSS scores 0–4 vs 5–14 or >14) were evaluated using ordinal logit regression models for intracerebral hemorrhage and ischemic stroke, respectively. Only variables with ≥10 observations in each outcome category were included. Cumulative survival probabilities were calculated with additional Kaplan-Meier curves. Associations between prestroke physical activity and short-term

Table 2 Survival Probabilities Stratified by Physical Activity

	30-d survival	1-y survival	3-y survival	5-y survival
Intracerebral hemorrhage				
No physical activity	0.67 (0.62–0.73)	0.55 (0.49–0.61)	0.44 (0.39–0.50)	0.33 (0.27–0.40)
Physical activity	0.91 (0.87–0.95)	0.86 (0.81–0.91)	0.80 (0.74–0.86)	0.73 (0.66–0.81)
Ischemic stroke				
No physical activity	0.88 (0.8–0.90)	0.73 (0.71–0.75)	0.57 (0.55–0.60)	0.44 (0.41–0.48)
Physical activity	0.98 (0.97–0.99)	0.94 (0.92–0.95)	0.86 (0.84–0.88)	0.77 (0.75–0.80)

Cumulative survival probabilities with 99% CIs at 30 days, 1 year, 3 years, and 5 years after intracerebral hemorrhage and ischemic stroke.

Figure 3 Kaplan-Meier Curves for Poststroke Survival Stratified by Comorbidity



Cumulative survival stratified by the weighted CCI as no comorbidity (0 points), mild comorbidity (1–2 points), and severe comorbidity (>2 points) for (A) physically active patients with intracerebral hemorrhage, (B) inactive patients with intracerebral hemorrhage, (C) physically active patients with ischemic stroke, and (D) inactive patients with ischemic stroke. CCI = Charlson comorbidity index.

and long-term all-cause mortality was evaluated using Cox proportional hazards models. Schoenfeld residuals were used to check the independence between residuals and time.

All statistical tests were interpreted at a 2-tailed significance level of 0.01 to account for multiple comparisons. Adjusted odds ratios (aORs) and adjusted hazard ratios (aHRs) for included covariates were derived from the respective model coefficients, and accompanying 99% CIs were presented for each covariate. There was no stepwise selection in the regression models because all included covariates were considered potential confounders to the association between prestroke physical activity and stroke outcomes. All analyses were performed using SPSS Statistics (IBM Corp. IBM SPSS Statistics for Windows,

Version 27.0. Armonk, NY) and R software (R Core Team, Version 4.0.2 for Windows; R Foundation for Statistical Computing, Vienna, Austria).

Data Availability

Anonymized data not published within this article will be made available to any qualified investigator by Professor Katharina Stibrant Sunnerhagen.

Results

Patient Characteristics

During the study period, 770 patients were diagnosed with intracerebral hemorrhage. In total, 6 patients were excluded

Table 3 Associations Between Covariates and All-Cause Mortality

	Short-term mortality (0–30 d)				Long-term mortality (30 d–2 y) ^a			
	Intracerebral hemorrhage		Ischemic stroke		Intracerebral hemorrhage		Ischemic stroke	
	aHR (99% CI)	p Value	aHR (99% CI)	p Value	aHR (99% CI)	p Value	aHR (99% CI)	p Value
Physical activity	0.30 (0.17–0.54)	<0.001	0.22 (0.13–0.37)	<0.001	0.40 (0.21–0.77)	<0.001	0.49 (0.38–0.62)	<0.001
Sex, female	0.98 (0.64–1.49)	0.888	0.95 (0.69–1.30)	0.675	0.72 (0.42–1.24)	0.124	1.21 (0.99–1.49)	0.015
Age younger than 70 y	1.00 (Reference)		1.00 (Reference)		1.00 (Reference)		1.00 (Reference)	
Age 70–80 y	2.89 (1.44–5.82)	<0.001	1.37 (0.78–2.41)	0.144	1.66 (0.76–3.59)	0.094	1.89 (1.33–2.69)	<0.001
Age older than 80 y	4.16 (2.02–8.56)	<0.001	1.91 (1.10–3.31)	0.002	2.89 (1.30–6.43)	<0.001	3.62 (2.56–5.12)	<0.001
Born in Sweden	1.00 (Reference)		1.00 (Reference)		1.00 (Reference)		1.00 (Reference)	
Born in Europe	1.05 (0.59–1.87)	0.813	0.99 (0.67–1.48)	0.965	0.94 (0.41–2.17)	0.854	0.89 (0.68–1.17)	0.284
Born outside of Europe	0.99 (0.40–2.43)	0.966	0.50 (0.18–1.36)	0.074	0.63 (0.18–2.22)	0.347	0.83 (0.49–1.42)	0.378
Education <10 y	1.00 (Reference)		1.00 (Reference)		1.00 (Reference)		1.00 (Reference)	
Education 10–12 y	0.90 (0.57–1.42)	0.538	0.88 (0.63–1.23)	0.328	0.91 (0.50–1.68)	0.697	0.88 (0.71–1.08)	0.109
Education >12 y	0.80 (0.45–1.45)	0.338	1.13 (0.73–1.75)	0.464	1.24 (0.60–2.53)	0.445	0.75 (0.56–1.00)	0.011
Low income	1.00 (Reference)		1.00 (Reference)		1.00 (Reference)		1.00 (Reference)	
Medium income	1.37 (0.84–2.24)	0.101	0.87 (0.62–1.23)	0.307	0.89 (0.47–1.70)	0.656	1.01 (0.80–1.26)	0.973
High income	1.21 (0.67–2.17)	0.401	0.85 (0.54–1.34)	0.360	1.08 (0.52–2.23)	0.789	1.14 (0.86–1.52)	0.229
Living alone	0.75 (0.48–1.16)	0.090	0.95 (0.68–1.33)	0.690	1.20 (0.68–2.11)	0.403	1.19 (0.96–1.48)	0.036
Independent in ADL	0.92 (0.59–1.43)	0.625	0.49 (0.35–0.69)	<0.001	0.52 (0.29–0.93)	0.004	0.50 (0.41–0.62)	<0.001
Hyperlipidemia	1.24 (0.64–2.40)	0.411	0.59 (0.36–0.96)	0.005	0.82 (0.35–1.91)	0.537	0.86 (0.65–1.12)	0.137
Previous stroke/TIA	1.71 (1.09–2.69)	0.002	0.53 (0.34–0.82)	<0.001	0.84 (0.44–1.61)	0.500	0.99 (0.78–1.27)	0.941
Atrial fibrillation	1.45 (0.82–2.57)	0.094	1.99 (1.43–2.76)	<0.001	0.88 (0.39–1.99)	0.683	1.65 (1.32–2.05)	<0.001
Diabetes	1.32 (0.77–2.26)	0.177	1.07 (0.76–1.52)	0.605	0.73 (0.34–1.57)	0.291	0.99 (0.78–1.27)	0.996
Coronary heart disease	0.78 (0.36–1.71)	0.422	1.37 (0.91–2.05)	0.048	1.14 (0.48–2.74)	0.694	1.40 (1.07–1.83)	0.001
Heart failure	1.05 (0.53–2.07)	0.855	1.26 (0.85–1.87)	0.129	0.87 (0.38–2.00)	0.657	1.46 (1.13–1.89)	<0.001
Cancer	1.08 (0.55–2.12)	0.756	1.16 (0.78–1.74)	0.336	2.97 (1.49–5.89)	<0.001	2.12 (1.69–2.67)	<0.001
Smoking	0.96 (0.48–1.94)	0.882	0.54 (0.28–1.04)	0.015	0.99 (0.43–2.30)	0.987	0.88 (0.63–1.24)	0.336

Continued

Table 3 Associations Between Covariates and All-Cause Mortality (continued)

	Short-term mortality (0–30 d)			Long-term mortality (30 d–2 y) ^a		
	Intracerebral hemorrhage		Ischemic stroke	Intracerebral hemorrhage		Ischemic stroke
	aHR (99% CI)	p Value	aHR (99% CI)	aHR (99% CI)	p Value	p Value
Lipid-lowering drugs	0.66 (0.39–1.13)	0.047	0.93 (0.64–1.34)	1.28 (0.68–2.39)	0.317	0.81 (0.64–1.03)
Antiplatelet drugs	1.25 (0.73–2.16)	0.283	1.40 (0.99–1.96)	1.44 (0.68–3.06)	0.210	0.99 (0.79–1.26)
Anticoagulant drugs	0.80 (0.42–1.51)	0.371	0.92 (0.60–1.42)	1.50 (0.64–3.50)	0.220	0.76 (0.56–1.02)
Antihypertensive drugs	0.87 (0.53–1.42)	0.467	1.03 (0.71–1.50)	0.92 (0.47–1.77)	0.732	1.11 (0.88–1.40)

Abbreviations: ADL = activities in daily living; aHR = adjusted hazard ratio; TIA = transient ischemic attack.

Multivariate Cox proportional hazards models predicting short-term and long-term mortality for patients with intracerebral hemorrhage and ischemic stroke.

^a Only patients who survived the first 30 d are included in analyses of long-term mortality: n = 580 patients with intracerebral hemorrhage and n = 4,096 patients with ischemic stroke.

Adjusted associations from models including prestroke physical activity, sex, age, country of birth, education, income, living situation, dependency, hyperlipidemia, previous stroke/TIA, atrial fibrillation, diabetes, coronary heart disease, heart failure, cancer, smoking, lipid-lowering drugs, antiplatelet drugs, anticoagulant drugs, and antihypertensive drugs.

because they lacked a Swedish personal identity number and 1 because of unavailable medical records. The final sample consisted of 763 patients with intracerebral hemorrhage in addition to 4,425 patients with ischemic stroke. Baseline characteristics of the study population are summarized in Table 1. Among physically active patients with intracerebral hemorrhage, 255 (88.5%) performed light physical activity for ≥ 4 h/wk and 33 (11.5%) moderate physical activity for ≥ 2 h/wk the year before stroke, compared with 1,659 (86.8%) and 252 (13.2%), respectively, among patients with ischemic stroke. The localizations of hematomas were similarly distributed in physically active and inactive patients; however, only inactive patients presented with primary intraventricular hemorrhages (eTable 4, links.lww.com/WNL/C265). After intracerebral hemorrhage, 50 (6.6%) patients underwent neurosurgery, while 7 patients with ischemic stroke were treated with hemicraniectomy, 381 (8.6%) were treated with thrombectomy, and 558 (12.6%) received thrombolysis.

Stroke Severity

In the group of patients with intracerebral hemorrhage, 265 (34.7%) presented with mild stroke, 236 (30.9%) moderate stroke, and 262 (34.3%) severe stroke, compared with 2,889 (65.3%), 1,071 (24.2%), and 465 (10.5%), respectively, for patients with ischemic stroke. Prestroke physical activity was the strongest predictor of less severe stroke symptoms for intracerebral hemorrhages (aOR 3.57, 99% CI 2.35–5.47, $p < 0.001$) and ischemic strokes (aOR 1.92, 99% CI 1.59–2.33, $p < 0.001$) in the ordinal regression models (Figure 1).

Poststroke Mortality

During a median follow-up of 4.7 (IQR 3.5–5.9) years after the incident stroke, 2,029 (39.1%) of the patients had died (370 [48.5%] after intracerebral hemorrhage and 1,659 [37.5%] after ischemic stroke). After intracerebral hemorrhage, 183 (24.0%) died within 30 days, compared with 329 (7.4%) after ischemic stroke. CVD was the cause of death in 218 (58.9%) patients with intracerebral hemorrhage and in 804 (48.5%) patients with ischemic stroke. Physically active patients had considerably higher survival compared with inactive patients (Figure 2), and the difference remained stable over the course of 5 years (Table 2). Notably, the group of patients with severe comorbidities who were physically active before intracerebral hemorrhage had a higher survival probability compared with inactive patients with no comorbid conditions, and a similar trend was observed for ischemic strokes (Figure 3). The comorbid conditions are summarized in eTable 5 (links.lww.com/WNL/C265).

Prestroke physical activity was associated with 70% lower short-term mortality after intracerebral hemorrhage (aHR 0.30, 99% CI 0.17–0.54, $p < 0.001$) and 78% after ischemic stroke (aHR 0.22, 99% CI 0.13–0.37, $p < 0.001$) (Table 3). Thereafter was prestroke physical activity associated with a 60% lower risk of long-term mortality after intracerebral hemorrhage (aHR 0.40, 99% CI 0.21–0.77, $p < 0.001$) and 51% after ischemic stroke

Table 4 Associations Between Physical Activity Levels, Stroke Severity, and All-Cause Mortality

Admission stroke severity	Intracerebral hemorrhage		Ischemic stroke	
	OR (99% CI)	<i>p</i> Value	OR (99% CI)	<i>p</i> Value
Light physical activity	3.61 (2.45–5.33)	0.899	2.59 (2.17–3.11)	0.332
Moderate physical activity	3.45 (1.45–8.61)		3.05 (2.04–4.70)	
Poststroke mortality	HR (99% CI)	<i>p</i> Value	HR (99% CI)	<i>p</i> Value
Light physical activity	0.29 (0.21–0.42)	0.136	0.33 (0.28–0.39)	<0.001
Moderate physical activity	0.14 (0.04–0.49)		0.11 (0.06–0.19)	

Abbreviations: HR = hazard ratio; OR = odds ratio.

Crude associations of light physical activity ≥ 4 h/wk or moderate physical activity ≥ 2 h/wk from univariate ordinal logit regression models and Cox proportional hazards models. *p* Values show the significance for comparisons between light and moderate physical activities.

(aHR 0.49, 99% CI 0.38–0.62, $p < 0.001$). When additionally adjusted for admission stroke severity (NIHSS), prestroke physical activity remained associated with a 52% lower risk of long-term mortality after intracerebral hemorrhage and 48% after ischemic stroke (eTable 6, links.lww.com/WNL/C265).

Dose-Response of Physical Activity

There was no statistically significant difference in the odds of less severe stroke symptoms between patients who performed light physical activity ≥ 4 h/wk and moderate physical activity ≥ 2 h/wk the year before stroke (Table 4). Moderate prestroke physical activity was associated with a lower crude hazard ratio for poststroke mortality (HR 0.11, 99% CI 0.06–0.19, $p < 0.001$) compared with light physical activity (HR 0.33, 99% CI 0.28–0.39, $p < 0.001$) in patients with ischemic stroke. Although a similar trend was observed for intracerebral hemorrhages, there was no statistically significant difference.

Discussion

In this longitudinal, register-based cohort study, we observed that prestroke physical activity was strongly associated with less severe stroke symptoms at hospital admission in patients with intracerebral hemorrhage and ischemic stroke. Notably, the magnitude of this association was greater for intracerebral hemorrhage than for ischemic stroke, with nonoverlapping CIs. Furthermore, we found that prestroke physical activity was independently associated with a lower risk of short-term and long-term all-cause mortality. We also found a dose-response relationship between a higher intensity of prestroke physical activity and reduced mortality hazards after ischemic strokes. However, there were no significant differences between patients with light and moderate physical activities in predictions of stroke severity or poststroke mortality after intracerebral hemorrhage, which is likely contributed by the small proportion of moderately active patients in this group. Although the association between prestroke physical activity and favorable outcomes after stroke has been previously reported, few studies included patients with intracerebral hemorrhage. One previous study has reported separate analyses for intracerebral

hemorrhage, in which there was no association between prestroke physical activity and modified Rankin Scale scores at discharge in 221 men with intracerebral hemorrhage from the Physicians' Health Study.³⁷

Prestroke physical activity emerged as the strongest predictor of milder admission stroke severity in our study. This finding is consistent with previous research within the PAPSIGOT project, in which patients engaging in light physical activity for ≥ 4 h/wk were more likely to experience a mild stroke (NIHSS 0–5) compared with those who were less active.¹⁰ In a larger study, prestroke physical activity for ≥ 30 minutes, 3 times/week was associated with less severe strokes (NIHSS 1–20) and, particularly, with the lowest quintile of stroke severity (NIHSS 1–5).¹² Similarly, a dose-dependent relationship between the duration of weekly prestroke physical activity and reduced ischemic stroke severity (NIHSS 0–3) has been previously reported.^{7,8} In another study, prestroke physical activity, defined as $>1,000$ MET minutes per week, predicted lower NIHSS scores in patients with ischemic stroke.¹¹

Independent of admission stroke severity and other risk factors, our findings demonstrate an association between prestroke physical activity and a lower risk of all-cause mortality among patients with intracerebral hemorrhage and ischemic stroke. Comparable results were observed in 2 recent studies with samples including predominantly ischemic stroke cases. Most recently, a higher level of 6-year accumulated prestroke physical activity was associated with lower all-cause mortality and cardiovascular mortality¹³; whereas the other study indicated that inactive individuals, with a basal metabolic rate <1.70 , had a greater risk of mortality at 1 and 5 years after stroke.¹⁵ Earlier, women with no prestroke physical activity were found to have a 39% higher risk of poststroke mortality compared with women with physical activity for >150 min/wk.¹⁴ Prestroke physical activity has also been previously associated with reduced in-hospital mortality.¹²

Although some studies have failed to detect associations between prestroke physical activity, stroke severity, and poststroke mortality, cumulative evidence suggests that prestroke

physical activity improves outcomes after stroke.²⁰ Exercise and physical activity are believed to induce brain ischemic tolerance through changes in endothelial function and the inflammatory response, induced angiogenesis and neurogenesis, inhibition of apoptotic pathways, and increased cerebral blood flow.³⁸ For intracerebral hemorrhage, the outcome is strongly determined by the volume, localization, and expansion of the hematoma.³⁹⁻⁴¹ The role of ischemic tolerance in intracerebral hemorrhage remains unknown; however, a recent preclinical study reported that treadmill exercise before intracerebral hemorrhage in aging mice can decrease hematoma volume, prevent withstanding neurologic deficits, and improve recovery from weight loss.²⁸ In addition, physically active individuals are likely to have healthier vessels, with less vascular calcification from atherosclerotic changes, mineral deposition, and cerebral amyloid angiopathy, which may decrease the possibility of hematoma expansion.⁴² Predictors of the outcome after intracerebral hemorrhage may also differ significantly between deep and lobar hematomas.^{43,44} Although hematoma volumes were not analyzed in this study, the location of hematomas was similar between physically active and inactive patients.

The key contribution of this study is the finding of a relationship between prestroke physical activity and favorable outcomes after intracerebral hemorrhage, which has not been previously reported, and is strengthened by the size of the data. This study also draws strength from Sweden's large, comprehensive, and validated inpatient registry data, where underreporting is generally low.⁴⁵ In addition, all persons in Sweden have equal access to tax-funded health care services, and very few with stroke can be expected to not receive hospital care, which increases the generalizability of our results. However, we acknowledge that the limitations of this study make causal inferences impossible. First, the internal validity is limited, due to the observational research design, which is sensitive to several types of bias. It is apparent that the group with prestroke physical activity differs from that with no physical activity in many aspects. Although several potential confounders were adjusted for in the multivariate regression models, there are factors unobserved in this study. In particular, we were not able to adjust for body mass index, which may confound the relationship between prestroke physical activity and stroke outcomes. Second, there is an uncertainty associated with assessments collected from medical records. Third, the use of self-reported retrospective assessments for prestroke physical activity introduces a risk of misclassification and recall bias. The neurologic consequences of stroke may hinder patients from correctly estimating their prestroke activity. However, there is evidence supporting that self-reported physical activity assessments may be reliable and reproducible in stroke populations,⁴⁶ and the SGPALS is a widely used instrument, which has been validated as an indicator of sedentary behavior and cardiovascular risk profile.⁴⁷ In addition, because the data were collected from routine clinical work, all patients and clinicians recording the variables were unaware of our research hypotheses.

Despite the well-known health benefits of physical activity, almost 30% of adults in the world are insufficiently active.⁴⁸ Based on all current knowledge, public health strategies and health care professionals should promote physical activity to decrease the consequences of stroke. Physical activity is considered a safe intervention and can serve as a counterpart to polypharmacy in elderly and cerebrovascular at-risk populations. The results of this study strengthen the notion that a prestroke habit of physical activity may protect the brain in cases of intracerebral hemorrhage and provide new incentives to explore related mechanisms. Future research with prospectively collected data on physical activity is needed to confirm the results of this study.

Acknowledgment

The authors thank the Väststroke collaboration and personnel working with data collection at the included stroke units. The authors also thank the statisticians at Riksstroke, Statistics Sweden, and the National Board of Health and Welfare.

Study Funding

This study was funded by the Swedish Research Council (VR2017-00946), the Swedish Heart and Lung Foundation, the Swedish Brain Foundation, Promobilia, the Swedish Stroke Association, and the Swedish State under an agreement between the Swedish government and county councils (ALFGBG 71980 and 73750).

Disclosure

The authors report no relevant disclosures. Go to Neurology.org/N for full disclosures.

Publication History

Received by *Neurology* February 15, 2022. Accepted in final form June 27, 2022. Submitted and externally peer reviewed. The handling editor was José Merino, MD, MPhil, FAAN.

Appendix Authors

Name	Location	Contribution
Adam Viktorisson, MD	Institute of Neuroscience and Physiology, Rehabilitation Medicine, Sahlgrenska Academy, University of Gothenburg, and the Sahlgrenska University Hospital, Sweden	Additional contributions: performed the literature search and systematic review of evidence; verified the data; created the figures; drafting/revision of the article for content, including medical writing for content; major role in the acquisition of data; study concept or design; and analysis or interpretation of data
Dongni Buvarp, MD, PhD	Institute of Neuroscience and Physiology, Rehabilitation Medicine, Sahlgrenska Academy, University of Gothenburg, and the Sahlgrenska University Hospital, Sweden	Additional contributions: collected the data; created the figures; drafting/revision of the article for content, including medical writing for content; study concept or design; and analysis or interpretation of data

Appendix (continued)

Name	Location	Contribution
Malin Reinholdsson, PT	Institute of Neuroscience and Physiology, Rehabilitation Medicine, Sahlgrenska Academy, University of Gothenburg, and the Sahlgrenska University Hospital; Department of Occupational Therapy and Physiotherapy, Sahlgrenska University Hospital, Gothenburg, Sweden	Additional contributions: performed the literature search and systematic review of evidence; verified the data; drafting/revision of the article for content, including medical writing for content; major role in the acquisition of data; and analysis or interpretation of data
Anna Danielsson, PT, PhD	Institute of Neuroscience and Physiology, Rehabilitation Medicine, Sahlgrenska Academy, University of Gothenburg, and the Sahlgrenska University Hospital; Institute of Neuroscience and Physiology, Department of Health and Rehabilitation, Sahlgrenska Academy, University of Gothenburg, Sweden	Additional contributions: performed the literature search and systematic review of evidence; drafting/revision of the article for content, including medical writing for content; and analysis or interpretation of data
Annie Palstam, PT, PhD	Institute of Neuroscience and Physiology, Rehabilitation Medicine, Sahlgrenska Academy, University of Gothenburg, and the Sahlgrenska University Hospital, Sweden; School of Health and Welfare, Dalarna University, Falun, Sweden	Additional contributions: performed the literature search and systematic review of evidence; drafting/revision of the article for content, including medical writing for content; and analysis or interpretation of data
Katharina Stibrant Sunnerhagen, MD, PhD	Institute of Neuroscience and Physiology, Rehabilitation Medicine, Sahlgrenska Academy, University of Gothenburg, and the Sahlgrenska University Hospital, Sweden	Additional contributions: performed the literature search and systematic review of evidence; drafting/revision of the article for content, including medical writing for content; major role in the acquisition of data; study concept or design; and analysis or interpretation of data

References

- Lear SA, Hu W, Rangarajan S, et al. The effect of physical activity on mortality and cardiovascular disease in 130 000 people from 17 high-income, middle-income, and low-income countries: the PURE study. *Lancet*. 2017;390(10113):2643-2654.
- Wang Y, Nie J, Ferrari G, Rey-Lopez JP, Rezende LFM. Association of physical activity intensity with mortality: a national cohort study of 403 681 US adults. *JAMA Intern Med*. 2021;181(2):203-211.
- Billinger SA, Arena R, Bernhardt J, et al. Physical activity and exercise recommendations for stroke survivors: a statement for healthcare professionals from the American Heart Association/American Stroke Association. *Stroke*. 2014;45(8):2532-2553.
- Winstein CJ, Stein J, Arena R, et al. Guidelines for adult stroke rehabilitation and recovery: a guideline for healthcare professionals from the American Heart Association/American Stroke Association. *Stroke*. 2016;47(6):e98-e169.
- Bull FC, Al-Ansari SS, Biddle S, et al. World Health Organization 2020 guidelines on physical activity and sedentary behaviour. *Br J Sports Med*. 2020;54(24):1451-1462.
- Edward JA, Comwell WK III. Impact of exercise on cerebrovascular physiology and risk of stroke. *Stroke*. 2022;53(7):2404-2410.
- Deplanque D, Masse I, Lefebvre C, et al. Prior TIA, lipid-lowering drug use, and physical activity decrease ischemic stroke severity. *Neurology*. 2006;67(8):1403-1410.
- Deplanque D, Masse I, Libersa C, Leys D, Bordet R. Previous leisure-time physical activity dose dependently decreases ischemic stroke severity. *Stroke Res Treat*. 2012;2012:614925.
- Krarpur LH, Truelsen T, Gluud C, et al. Prestroke physical activity is associated with severity and long-term outcome from first-ever stroke. *Neurology*. 2008;71(17):1313-1318.
- Reinholdsson M, Palstam A, Sunnerhagen KS. Prestroke physical activity could influence acute stroke severity (part of PAPSIGOT). *Neurology*. 2018;91(16):e1461-e1467.
- Ricciardi AC, Lopez-Cancio E, Perez de la Ossa N, et al. Prestroke physical activity is associated with good functional outcome and arterial recanalization after stroke due to a large vessel occlusion. *Cerebrovasc Dis*. 2014;37(4):304-311.
- Wen CP, Liu CH, Jeng JS, et al. Pre-stroke physical activity is associated with fewer post-stroke complications, lower mortality and a better long-term outcome. *Eur J Neurol*. 2017;24(12):1525-1531.
- Mediano MFF, Mok Y, Coresh J, et al. Prestroke physical activity and adverse health outcomes after stroke in the atherosclerosis risk in communities study. *Stroke*. 2021;52(6):2086-2095.
- Bell CL, LaCroix A, Masaki K, et al. Prestroke factors associated with poststroke mortality and recovery in older women in the Women's Health Initiative. *J Am Geriatr Soc*. 2013;61(8):1324-1330.
- Morovatdar N, Di Napoli M, Stranges S, et al. Regular physical activity postpones age of occurrence of first-ever stroke and improves long-term outcomes. *Neurol Sci*. 2021;42(8):3203-3210.
- Li HX, Wang PS, Tian GL, Xu WL, Liu D, Wu J. A seven-year follow-up analysis on prognosis factors of stroke patients. *Chung Hua Liu Hsing Ping Hsueh Tsa Chih*. 2005;26(9):716-719.
- Decourcelle A, Moulin S, Sibon I, et al. Influence of previous physical activity on the outcome of patients treated by thrombolytic therapy for stroke. *J Neurol*. 2015;262(11):2513-2519.
- Stroud N, Mazwi TM, Case LD, et al. Prestroke physical activity and early functional status after stroke. *J Neurol Neurosurg Psychiatry*. 2009;80(9):1019-1022.
- Ursin MH, Ihle-Hansen H, Fure B, Tveit A, Bergland A. Effects of pre-morbid physical activity on stroke severity and post-stroke functioning. *J Rehabil Med*. 2015;47(7):612-617.
- Viktorissov A, Reinholdsson M, Danielsson A, Palstam A, Sunnerhagen KS. Pre-stroke physical activity in relation to post-stroke outcomes—linked to the International Classification of Functioning, Disability and Health (ICF): a scoping review. *J Rehabil Med*. 2022;54:jrm00251.
- Qureshi AI, Mendelow AD, Hanley DF. Intracerebral haemorrhage. *Lancet*. 2009;373(9675):1632-1644.
- van Asch CJ, Luitse MJ, Rinkel GJ, van der Tweel I, Algra A, Klijn CJ. Incidence, case fatality, and functional outcome of intracerebral haemorrhage over time, according to age, sex, and ethnic origin: a systematic review and meta-analysis. *Lancet Neurol*. 2010;9(2):167-176.
- Krishnamurthi RV, Ikeda T, Feigin VL. Global, regional and country-specific burden of ischaemic stroke, intracerebral haemorrhage and subarachnoid haemorrhage: a systematic analysis of the Global Burden of Disease Study 2017. *Neuroepidemiology*. 2020;54(2):171-179.
- Greenberg SM, Ziai WC, Cordonnier C, et al. 2022 guideline for the management of patients with spontaneous intracerebral haemorrhage: a guideline from the American Heart Association/American Stroke Association. *Stroke*. 2022;53(7):e282-e361. doi: 10.1161/STR.0000000000000407.
- O'Donnell MJ, Xavier D, Liu L, et al. Risk factors for ischaemic and intracerebral haemorrhagic stroke in 22 countries (the INTERSTROKE study): a case-control study. *Lancet*. 2010;376(9735):112-123.
- Thompson PD, Buchner D, Pina IL, et al. Exercise and physical activity in the prevention and treatment of atherosclerotic cardiovascular disease: a statement from the Council on Clinical Cardiology (Subcommittee on Exercise, Rehabilitation, and Prevention) and the Council on Nutrition, Physical Activity, and Metabolism (Subcommittee on Physical Activity). *Circulation*. 2003;107(24):3109-3116.
- Brown BM, Peiffer JJ, Taddei K, et al. Physical activity and amyloid-beta plasma and brain levels: results from the Australian Imaging, Biomarkers and Lifestyle Study of Ageing. *Mol Psychiatry*. 2013;18(8):875-881.
- Kinoshita K, Hamanaka G, Ohtomo R, et al. Mature adult mice with exercise-preconditioning show better recovery after intracerebral hemorrhage. *Stroke*. 2021;52(5):1861-1865.
- Benchimol EI, Smeeth L, Guttman A, et al. The REporting of studies Conducted using Observational Routinely-collected health Data (RECORD) statement. *PLoS Med*. 2015;12(10):e1001885.
- Hachinski V, Iadecola C, Petersen RC, et al. National Institute of Neurological Disorders and Stroke-Canadian Stroke Network vascular cognitive impairment harmonization standards. *Stroke*. 2006;37(9):2220-2241.
- Kasner SE, Chalela JA, Luciano JM, et al. Reliability and validity of estimating the NIH stroke scale score from medical records. *Stroke*. 1999;30(8):1534-1537.
- Grimby G, Börjesson M, Jonsdottir IH, Schnohr P, Thelle DS, Saltin B. The "Saltin-Grimby Physical Activity Level Scale" and its application to health research. *Scand J Med Sci Sports*. 2015;25(suppl 4):119-125.
- Saltin B, Grimby G. Physiological analysis of middle-aged and old former athletes. Comparison with still active athletes of the same ages. *Circulation*. 1968;38(6):1104-1115.
- Charlson ME, Pompei P, Ales KL, MacKenzie CR. A new method of classifying prognostic comorbidity in longitudinal studies: development and validation. *J Chronic Dis*. 1987;40(5):373-383.
- Viktorissov A, Buvarp D, Sunnerhagen KS. Prestroke physical activity and outcomes after intracerebral haemorrhage in comparison to ischaemic stroke: protocol

- for a matched cohort study (part of PAPSIGOT). *BMJ Open*. 2021;11(11):e053067.
36. van Buuren S, Groothuis-Oudshoorn K. mice: multivariate imputation by chained equations in R. *J Statist Softw*. 2011;45(3):67.
 37. Rist PM, Lee IM, Kase CS, Gaziano JM, Kurth T. Physical activity and functional outcomes from cerebral vascular events in men. *Stroke*. 2011;42(12):3352-3356.
 38. Hafez S, Eid Z, Alabasi S, Darwiche Y, Channaoui S, Hess DC. Mechanisms of preconditioning exercise-induced neurovascular protection in stroke. *J Stroke*. 2021;23(3):312-326.
 39. Broderick JP, Brott TG, Duldner JE, Tomsick T, Huster G. Volume of intracerebral hemorrhage. A powerful and easy-to-use predictor of 30-day mortality. *Stroke*. 1993;24(7):987-993.
 40. Davis SM, Broderick J, Hennerici M, et al. Hematoma growth is a determinant of mortality and poor outcome after intracerebral hemorrhage. *Neurology*. 2006;66(8):1175-1181.
 41. Flaherty ML, Haverbusch M, Sekar P, et al. Long-term mortality after intracerebral hemorrhage. *Neurology*. 2006;66(8):1182-1186.
 42. Antunes B, Rossi F, Cholewa J, Lira F. Regular physical activity and vascular aging. *Curr Pharm Des*. 2016;22.
 43. Falcone GJ, Biffi A, Brouwers HB, et al. Predictors of hematoma volume in deep and lobar supratentorial intracerebral hemorrhage. *JAMA Neurol*. 2013;70(8):988-994.
 44. Lioutas VA, Beiser AS, Aparicio HJ, et al. Assessment of incidence and risk factors of intracerebral hemorrhage among participants in the Framingham Heart Study between 1948 and 2016. *JAMA Neurol*. 2020;77(10):1252-1260.
 45. Söderholm A, Stegmayr B, Glader EL, Asplund K. Validation of hospital performance measures of acute stroke care quality. Riksstroke, the Swedish Stroke Register. *Neuroepidemiology*. 2016;46(4):229-234.
 46. Martins JC, Aguiar LT, Nadeau S, Scianni AA, Teixeira-Salmela LF, Faria CDCDM. Measurement properties of self-report physical activity assessment tools for patients with stroke: a systematic review. *Braz J Phys Ther*. 2019;23(6):476-490.
 47. Aires N, Selmer R, Thelle D. The validity of self-reported leisure time physical activity, and its relationship to serum cholesterol, blood pressure and body mass index. A population based study of 332,182 men and women aged 40-42 years. *Eur J Epidemiol*. 2003;18(6):479-485.
 48. Guthold R, Stevens GA, Riley LM, Bull FC. Worldwide trends in insufficient physical activity from 2001 to 2016: a pooled analysis of 358 population-based surveys with 1.9 million participants. *Lancet Glob Health*. 2018;6(10):e1077-e1086.

Neurology®

Associations of Prestroke Physical Activity With Stroke Severity and Mortality After Intracerebral Hemorrhage Compared With Ischemic Stroke

Adam Viktorisson, Dongni Buvarp, Malin Reinholdsson, et al.

Neurology 2022;99:e2137-e2148 Published Online before print August 19, 2022

DOI 10.1212/WNL.0000000000201097

This information is current as of August 19, 2022

Updated Information & Services	including high resolution figures, can be found at: http://n.neurology.org/content/99/19/e2137.full
References	This article cites 47 articles, 16 of which you can access for free at: http://n.neurology.org/content/99/19/e2137.full#ref-list-1
Subspecialty Collections	This article, along with others on similar topics, appears in the following collection(s): Cohort studies http://n.neurology.org/cgi/collection/cohort_studies Infarction http://n.neurology.org/cgi/collection/infarction Intracerebral hemorrhage http://n.neurology.org/cgi/collection/intracerebral_hemorrhage Outcome research http://n.neurology.org/cgi/collection/outcome_research Public health http://n.neurology.org/cgi/collection/public_health
Permissions & Licensing	Information about reproducing this article in parts (figures, tables) or in its entirety can be found online at: http://www.neurology.org/about/about_the_journal#permissions
Reprints	Information about ordering reprints can be found online: http://n.neurology.org/subscribers/advertise

Neurology® is the official journal of the American Academy of Neurology. Published continuously since 1951, it is now a weekly with 48 issues per year. Copyright © 2022 The Author(s). Published by Wolters Kluwer Health, Inc. on behalf of the American Academy of Neurology. All rights reserved. Print ISSN: 0028-3878. Online ISSN: 1526-632X.

