

# Teaching NeuroImage: Arteriovenous Fistula of Cauda Equina Fed by the Proximal Radicular Artery

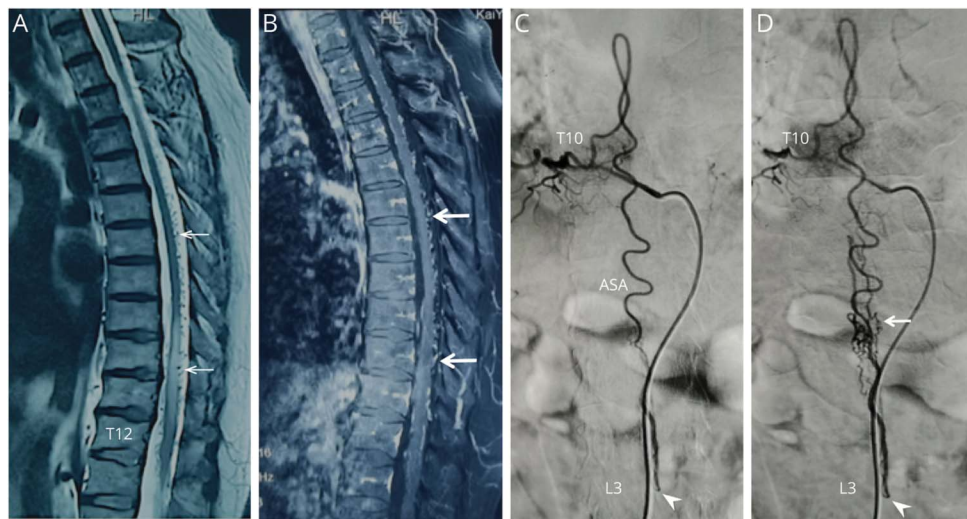
Conghui Xu, MD,\* Jun Lin, MD,\* Xiaodong Niu, MD, and Jin Li, MD, PhD

*Neurology*® 2022;98:e776-e777. doi:10.1212/WNL.0000000000013151

**Correspondence**

Dr. Li  
lijinhuaxi@126.com

**Figure 1** Preoperative Spinal MRI and DSA



(A, B) Preoperative MRI shows spinal edema and prominent flow voids (arrows). (C, D) Angiography shows a CEAVF (arrowheads) fed by the PRA.

A 66-year-old man presented with a 2-year history of weakness and numbness in his lower limbs and occasional urinary incontinence. Spinal MRI showed spinal edema and prominent flow voids. Selective angiography of the right T10 segmental artery revealed an arteriovenous fistula of cauda equina (CEAVF) fed by the proximal radicular artery (PRA), the downward extension of anterior spinal artery (Figure 1). Intraoperatively, the fistula, draining vein, and feeding artery running along a nerve root were identified. The fistula was resected successfully (Figure 2), and the symptoms gradually improved. Spinal CEAVF is extremely rare.<sup>1,2</sup> This case demonstrates the microscopic angioarchitecture of CEAVF.

## MORE ONLINE

### Teaching slides

[links.lww.com/WNL/B687](https://links.lww.com/WNL/B687)

## Study Funding

The authors report no targeted funding.

## Disclosure

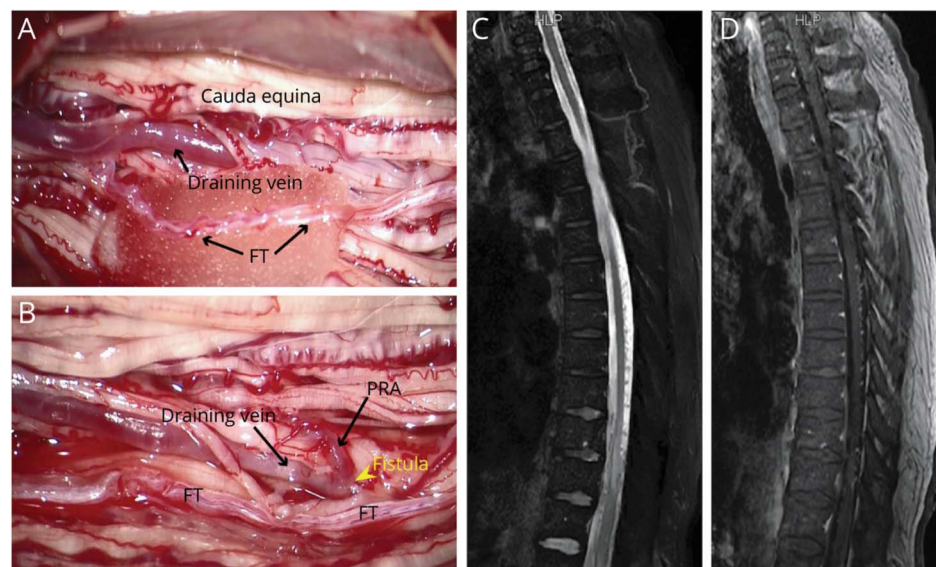
The authors report no disclosures relevant to the manuscript. Go to [Neurology.org/N](https://Neurology.org/N) for full disclosures.

\*These authors contributed equally to this work.

From the Department of Radiology (C.X.), Chengdu Shangjin Nanfu Hospital, Sichuan University; Department of Operating Room (J. Lin), Chengdu Shangjin Nanfu Hospital, Sichuan University; and Department of Neurosurgery (X.N., J. Li), West China Hospital of Sichuan University, Chengdu, China.

Go to [Neurology.org/N](https://Neurology.org/N) for full disclosures.

**Figure 2** Intraoperative and Postoperative Images



(A, B) Intraoperative images show the microscopic angioarchitecture of CEAVF. The filum terminale (FT) is not involved. (C, D) Postoperative MRI reveals reduced edema and flow voids.

### Appendix Authors

Name	Location	Contribution
<b>Conghui Xu, MD</b>	Chengdu Shangjin Nanfu Hospital, Sichuan University, Chengdu, China	Drafting/revision of the article for content, including medical writing for content, and major role in the acquisition of data
<b>Jun Lin, MD</b>	Chengdu Shangjin Nanfu Hospital, Sichuan University, Chengdu, China	Drafting/revision of the article for content, including medical writing for content, and major role in the acquisition of data
<b>Xiaodong Niu, MD</b>	West China Hospital of Sichuan University, Chengdu, China	Drafting/revision of the article for content, including medical writing for content, and study concept or design

### Appendix (continued)

Name	Location	Contribution
<b>Jin Li, MD, PhD</b>	West China Hospital of Sichuan University, Chengdu, China	Drafting/revision of the article for content, including medical writing for content, and study concept or design

### References

- Ohtonari T, Ota S, Nishihara N, et al. Arteriovenous fistula in a nerve root of the cauda equina fed by a proximal radiculo-medullary artery. *Interv Neuroradiol*. 2011;17(12):217-223.
- Tanioka S, Toma N, Sakaida H, Umeda Y, Suzuki H. A case of arteriovenous fistula of the cauda equina fed by the proximal radicular artery: anatomical features and treatment precautions. *Eur Spine J*. 2018;27(suppl 3):281-286.

# Neurology®

## Teaching NeuroImage: Arteriovenous Fistula of Cauda Equina Fed by the Proximal Radicular Artery

Conghui Xu, Jun Lin, Xiaodong Niu, et al.

*Neurology* 2022;98:e776-e777 Published Online before print December 6, 2021

DOI 10.1212/WNL.0000000000013151

**This information is current as of December 6, 2021**

<b>Updated Information &amp; Services</b>	including high resolution figures, can be found at: <a href="http://n.neurology.org/content/98/7/e776.full">http://n.neurology.org/content/98/7/e776.full</a>
<b>References</b>	This article cites 2 articles, 0 of which you can access for free at: <a href="http://n.neurology.org/content/98/7/e776.full#ref-list-1">http://n.neurology.org/content/98/7/e776.full#ref-list-1</a>
<b>Subspecialty Collections</b>	This article, along with others on similar topics, appears in the following collection(s): <b>All Spinal Cord</b> <a href="http://n.neurology.org/cgi/collection/all_spinal_cord">http://n.neurology.org/cgi/collection/all_spinal_cord</a> <b>Arteriovenous malformation</b> <a href="http://n.neurology.org/cgi/collection/arteriovenous_malformation">http://n.neurology.org/cgi/collection/arteriovenous_malformation</a>
<b>Permissions &amp; Licensing</b>	Information about reproducing this article in parts (figures, tables) or in its entirety can be found online at: <a href="http://www.neurology.org/about/about_the_journal#permissions">http://www.neurology.org/about/about_the_journal#permissions</a>
<b>Reprints</b>	Information about ordering reprints can be found online: <a href="http://n.neurology.org/subscribers/advertise">http://n.neurology.org/subscribers/advertise</a>

*Neurology*® is the official journal of the American Academy of Neurology. Published continuously since 1951, it is now a weekly with 48 issues per year. Copyright © 2021 American Academy of Neurology. All rights reserved. Print ISSN: 0028-3878. Online ISSN: 1526-632X.

