

José G. Merino, MD, MPhil, Editor-in-Chief, *Neurology*<sup>®</sup>

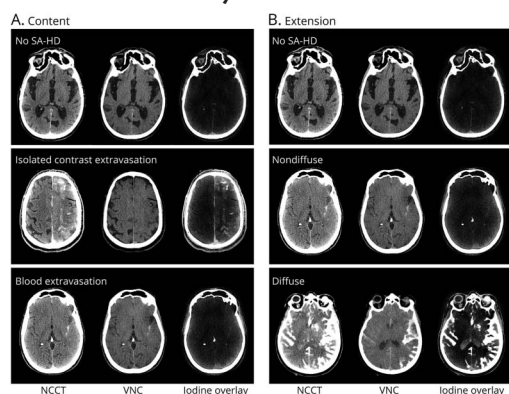


## Notable in *Neurology* This Week

This issue features an article that examines regional and ethnic differences in stroke incidence among young adults; another investigates the effect of formaldehyde exposure on cognition. A featured Contemporary Issues in Practice, Education, & Research article discusses the future role of artificial intelligence in neurologic practice.

## Research Articles

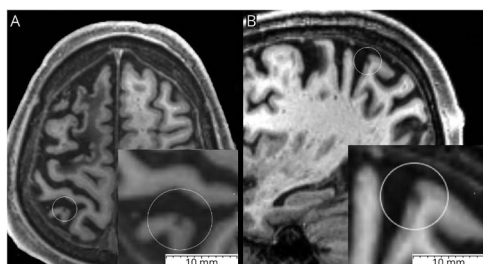
### Characterization of Subarachnoid Hyperdensities After Thrombectomy for Acute Stroke Using Dual-Energy CT



Using postinterventional dual-energy CT, researchers investigated the prevalence and clinical relevance of subarachnoid hyperdensities (SA-HD) seen after mechanical thrombectomy for acute ischemic stroke. They found SA-HD in 28% of patients. A diffuse pattern of SA-HD, seen in 17% of patients, was associated with an increased risk of poor outcome and death.

[Page 226](#)

### Association Between Cerebral Cortical Microinfarcts and Perilesional Cortical Atrophy on 3T MRI



Cerebral microinfarcts (CMIs) have been associated with cortical atrophy and cognitive decline in patients with dementia and cerebrovascular disease. This study, which enrolled memory clinic patients, found that CMIs had perilesional cortical atrophy in an area that extended far beyond the ischemic core and that CMI-associated cognitive impairment may be partially mediated by global cortical thickness.

[Page 227](#)

### Sex Differences in the Association Between Midlife Cardiovascular Conditions or Risk Factors With Midlife Cognitive Decline

This study found that despite a higher prevalence in men, coronary heart disease, diabetes, and dyslipidemia had a stronger association on cognition and cognitive decline in women. These findings highlight the need for research to understand the reason for these disparities and to develop interventions to identify and manage these conditions and risk factors in women.

[Page 228](#)

*Continued*

## Lifestyle Factors and Parkinson Disease Risk: Korean Nationwide Cohort Study With Repeated Health Screening Data

This Korean nationwide cohort study found that alcohol consumption and physical activity were inversely associated with the odds of developing Parkinson disease in men and women; smoking had an inverse association only for men. These associations were stronger in individuals who participated in regular health screenings than in those who did not.

[Page 230](#)

NB: "Rare Cause of Hemiparesis and Ataxia in a 36-Year-Old Man," p. 251. To check out other Resident & Fellow Section Clinical Reasoning articles, point your browser to [Neurology.org/N](https://www.neurology.org/N) and click on the link to the Resident & Fellow Section. At the end of the issue, check out the NeuroImage discussing painful mastication and generalized musculoskeletal pain in a woman with AIDS on antiretroviral therapy. This week also includes a Humanities in Neurology article titled "I Wasn't There: Caring for a Patient With Trisomy 21, Alzheimer Disease, and Epilepsy Until His Final Days With COVID-19."

### NEW EPISODE

Neurology®  
PODCAST



The *Neurology*® Podcast provides practical, relevant, and timely information for neurologists and all clinicians to practice the best possible neurologic-based medicine for our patients. Each episode features interviews with authors of recent articles from the *Neurology* journals and beyond.

[NPub.org/podcast](https://www.npub.org/podcast)

# Neurology<sup>®</sup>

## Spotlight on the February 8 Issue

José G. Merino

*Neurology* 2022;98;217-218

DOI 10.1212/WNL.00000000000013197

### This information is current as of February 7, 2022

**Updated Information & Services**

including high resolution figures, can be found at:  
<http://n.neurology.org/content/98/6/217.full>

**Permissions & Licensing**

Information about reproducing this article in parts (figures, tables) or in its entirety can be found online at:  
[http://www.neurology.org/about/about\\_the\\_journal#permissions](http://www.neurology.org/about/about_the_journal#permissions)

**Reprints**

Information about ordering reprints can be found online:  
<http://n.neurology.org/subscribers/advertise>

*Neurology*® is the official journal of the American Academy of Neurology. Published continuously since 1951, it is now a weekly with 48 issues per year. Copyright © 2022 American Academy of Neurology. All rights reserved. Print ISSN: 0028-3878. Online ISSN: 1526-632X.

