

José G. Merino, MD, MPhil, Editor-in-Chief, *Neurology*®

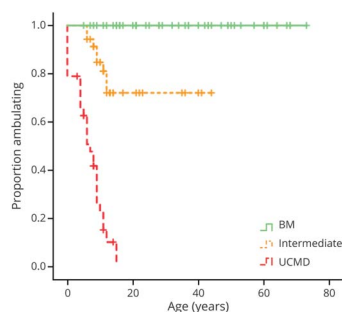


Notable in *Neurology* this week

This issue features an article that examines the association between high-density lipoprotein cholesterol and risk of developing Parkinson disease; another investigates a case series of patients with prolonged reversible unconsciousness following coronavirus disease 2019 (COVID-19)-related severe respiratory failure. A featured Contemporary Issues article provides a summary on the status of academic neurology from the structured insights of chairs of neurology departments in the United States.

Articles

Association of Initial Maximal Motor Ability With Long-term Functional Outcome in Patients With COL6-Related Dystrophies



Early maximal motor function achieved by patients with COL6-related dystrophies correlates with both motor function and pulmonary function long-term. This proposed phenotypic classification may help clinicians provide a more accurate prognosis. Recognition of phenotypic subtype in young patients with COL6-related dystrophies will improve anticipatory clinical care and clinical trial readiness.

Page 473

MORE ONLINE

COVID-19 Resources

For the latest articles, invited commentaries, and blogs from physicians around the world

[NPub.org/COVID19](https://www.neurology.org/COVID19)

A Cross-Sectional Study of Nemaline Myopathy

Defining the clinical characteristics of nemaline myopathy enables more precise disease prognostication. In this study, nemaline myopathy was associated with significant disabilities and had a relatively stable disease course. The data identify pulmonary function testing, the Motor Function Measure 32, and the slurp test as potential outcome measures for future interventional trials.

Page 474

Association of Epileptic and Nonepileptic Seizures and Changes in Circulating Plasma Proteins Linked to Neuroinflammation

The authors demonstrate that blood-based biomarkers can retrospectively distinguish epileptic from psychogenic nonepileptic seizures. A diagnostic algorithm integrating protein concentrations selected from 50+ analyzed inflammation-associated proteins was developed with strong diagnostic accuracy indicative of epileptic seizures. This approach provides a rapid test to diagnose seizures in various health care settings.

Page 476

From editorialists Young and Thio: "The study should be viewed as a promising, but very preliminary, study in exploring biomarkers to differentiate ES from PNES."

Page 467

Continued

Association of CSF Biomarkers With Hippocampal-Dependent Memory in Preclinical Alzheimer Disease

The identification of impaired cognitive functions in preclinical Alzheimer disease (AD) is critical for advancing early detection of AD risk. In a group of cognitively unimpaired older adults, hippocampal-dependent memory was correlated with CSF $A\beta_{42}/A\beta_{40}$ and $p\text{-tau}_{181}$. Tests designed to tax hippocampal function may improve early detection of preclinical AD.

Page 479

NB: "Training in Neurology: Neuro Day: An Innovative Curriculum Connecting Medical Students With Patients," p. e1482. To check out other Resident & Fellows Section Training in Neurology articles, point your browser to [Neurology.org/N](https://www.neurology.org/N) and click on the link to the Resident & Fellow Section. At the end of the issue, check out the NeuroImages illustrating deep medullary vein thrombosis in a 15-day-old full-term neonate and a meningioma in a patient presenting with hemiparesis and aphasia. This week also includes a Humanities in Neurology piece titled "Sonnet to the Brain."

NEW EPISODE



PODCAST

March 9, 2021

Comparison of 1 vs 2 Brain Death Examinations on Time to Death Pronouncement and Organ Donation: A 12-Year Single Center Experience (see p. 477)

In the first segment, Dr. Jeff Ratliff talks with Dr. Wilson Abdo about prolonged unconsciousness in COVID-19. In the second part of the podcast, Dr. David Lapidus discusses brain death diagnosis with Dr. Panayiotis Varelas.

Disclosures can be found at [Neurology.org](https://www.neurology.org).

CME Opportunity: Listen to this week's Neurology® Podcast and earn 0.5 AMA PRA Category 1 CME Credits™ by completing the online podcast quiz.

Neurology®

Spotlight on the March 9 Issue

José G. Merino

Neurology 2021;96;463-464

DOI 10.1212/WNL.0000000000011550

This information is current as of March 8, 2021

Updated Information & Services

including high resolution figures, can be found at:
<http://n.neurology.org/content/96/10/463.full>

Permissions & Licensing

Information about reproducing this article in parts (figures, tables) or in its entirety can be found online at:
http://www.neurology.org/about/about_the_journal#permissions

Reprints

Information about ordering reprints can be found online:
<http://n.neurology.org/subscribers/advertise>

Neurology® is the official journal of the American Academy of Neurology. Published continuously since 1951, it is now a weekly with 48 issues per year. Copyright © 2021 American Academy of Neurology. All rights reserved. Print ISSN: 0028-3878. Online ISSN: 1526-632X.

