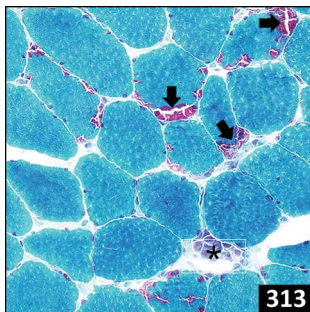
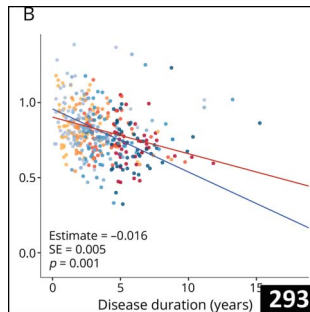




289



313



293

Select figures listed on the Table of Contents only appear within the full-length articles online.

In Focus

281 **Spotlight on the August 13 issue**

282 **This Week's Neurology® Podcast**

Editorials

283 **Demyelinating lesions and progressive MS: Location, location, location**

E.A. Yeh and R.J. Fox

285 **Harnessing real-world data to inform treatment decisions in multiple sclerosis**

C.M. Hersh and R.A. Marrie

287 **Multiple system atrophy and myoclonus: A morphologic marker in the spinal cord?**

L.V. Kalia and K.A. Jellinger

Articles: Short Format

Full articles at Neurology.org/N

289 **Unilateral motor progression in MS: Association with a critical corticospinal tract lesion**

E. Sechi, B.M. Keegan, T.J. Kaufmann, O.H. Kantarci, B.G. Weinschenker, and E.P. Flanagan

[CME Course](#) [Editorial, p. 283](#)

290 **Comparative effectiveness of teriflunomide vs dimethyl fumarate in multiple sclerosis**

D.-A. Laplaud, R. Casey, L. Barbin, M. Debouverie, J. De Sèze, D. Brassat, S. Wiertelowski, B. Brochet, J. Pelletier, P. Vermersch, G. Edan, C. Lebrun-Frenay, P. Clavelou, E. Thouvenot, J.-P. Camdessanché, A. Tourbah, B. Stankoff, A. Al Khedr, P. Cabre, C. Lubetzki, C. Papeix, E. Berger, O. Heinzlef, T. Debroucker, T. Moreau, O. Gout, B. Bourre, A. Wahab, P. Labauge, L. Magy, G. Defer, A.-M. Guennoc, N. Maubeuge, C. Labeyrie, I. Patry, C. Nifle, O. Casez, L. Michel, F. Rollot, E. Leray, S. Vukusic, and Y. Foucher, on behalf of the SFSEP and OFSEP groups

[Editorial, p. 285](#) [Open Access Article](#) [Class of Evidence](#)

291 **Brain MRI features and scoring of leukodystrophy in adult-onset Krabbe disease**

L. Cousyn, B. Law-Ye, N. Pyatigorskaya, R. Debs, R. Froissart, M. Piraud, A. Federico, S. Salvatore, A. Cerase, M.C. Macário, J. Durães, S.H. Kim, H. Adachi, B. Audoin, X. Aygnagnac, Y. Da, R. Henderson, R. La Piana, C. Laule, K. Nakamagoe, R. Raininko, L. Schols, S.M. Sirrs, F. Viader, K. Jastrzębski, D. Leclercq, and Y. Nadjar

292 **Quantitative MR neurography biomarkers in 5q-linked spinal muscular atrophy**

J. Kollmer, T. Hilgenfeld, A. Ziegler, A. Saffari, G. Sam, J.M. Hayes, A. Pietsch, M. Jost, S. Heiland, M. Bendszus, W. Wick, and M. Weiler

293 **Effect of polygenic load on striatal dopaminergic deterioration in Parkinson disease**

M.J. Lee, K. Pak, J.H. Kim, Y.J. Kim, J. Yoon, J. Lee, C.H. Lyoo, H.J. Park, J.-H. Lee, and N.-Y. Jung

294 **Impulse control disorders in Parkinson disease and RBD: A longitudinal study of severity**

F. Baig, M.J. Kelly, M.A. Lawton, C. Ruffmann, M. Rolinski, J.C. Klein, T. Barber, C. Lo, Y. Ben-Shlomo, D. Okai, and M.T. Hu

[CME Course](#) [Open Access Article](#) [Podcast](#)

295 **Microstructural white matter changes preceding white matter hyperintensities in migraine**

E.B. Arkink, I.H. Palm-Meinders, H. Koppen, J. Milles, B. van Lew, L.J. Launer, P.A.M. Hofman, G.M. Terwindt, M.A. van Buchem, M.D. Ferrari, and M.C. Kruit

296 **Effect of coexisting vascular disease on long-term risk of recurrent events after TIA or stroke**

M. Boulanger, L. Li, S. Lyons, N.G. Lovett, M.M. Kubiak, L. Silver, E. Touzé, and P.M. Rothwell, on behalf of the Oxford Vascular Study

[Open Access Article](#)

[Ahead of Print Articles and Editorials](#)

NPub.org/aheadofprint

Continued

297 **Disability after minor stroke and TIA: A secondary analysis of the SOCRATES trial**

B. Cucchiara, D.K. George, S.E. Kasner, M. Knutsson, H. Denison, P. Ladenvall, P. Amarenco, and S.C. Johnston

298 **Early mobilization and quality of life after stroke: Findings from AVERT**

T.B. Cumming, L. Churilov, J. Collier, G. Donnan, F. Ellery, H. Dewey, P. Langhorne, R.I. Lindley, M. Moodie, A.G. Thrift, and J. Bernhardt, on behalf of the AVERT Trial Collaboration group

➔ Class of Evidence

What's Happening

299 **What's happening in *Neurology*[®]**

300 **What's happening in *Neurology*[®] Genetics**

301 **What's happening in Without Borders**

Medical Hypothesis

302 **Spinal cord α -synuclein deposition associated with myoclonus in patients with MSA-C**

J. Hwang, A.M. Bank, F. Mortazavi, D.H. Oakley, M.P. Frosch, and J.D. Schmahmann

➔ Editorial, p. 287

Clinical/Scientific Notes

310 **Saposin B deficiency as a cause of adult-onset metachromatic leukodystrophy**

S. Fenu, B. Castellotti, L. Farina, T. Cavallaro, D. Di Bella, C. Benzoni, C. Gellera, D. Pareyson, F. Taroni, and E. Salsano

NeuroImages

313 **Necrotizing autoimmune myopathy with tubular aggregates**

N.N. Madigan, T. Liewluck, M. Milone, and E. Naddaf

Resident & Fellow Section

315 **Clinical Reasoning: A 68-year-old man with rapid cognitive decline**

S.H. Berth, A. Seth, A. Cohen, L. Rivera Lara, F. Hui, and L.R. Sun

e729 **Teaching NeuroImages: Unilateral focal segmental hyperhidrosis from spinal tumor progression**

C.S. Hong, A.J. Kundishora, K.T. Kahle, and M.L. Diluna

e731 **Teaching NeuroImages: X-linked adrenoleukodystrophy: Spinocerebellar variant**

L.W.C. Au, A.Y.Y. Chan, and V.C.T. Mok

Disputes & Debates: Editors' Choice

319 **Editors' note: Safety and efficacy of venoplasty in MS: A randomized, double-blind, sham-controlled phase II trial**

A. Ganesh and S. Galetta

319 **Reader response: Safety and efficacy of venoplasty in MS: A randomized, double-blind, sham-controlled phase II trial**

B.H.J. Juurlink, A.F. Embry, and P.M. Bavera

320 **Author response: Safety and efficacy of venoplasty in MS: A randomized, double-blind, sham-controlled phase II trial**

A. Traboulsee and L. Machan

320 **Reader response: Safety and efficacy of venoplasty in MS: A randomized, double-blind, sham-controlled phase II trial**

A. Rasman

321 **Reader response: Safety and efficacy of venoplasty in MS: A randomized, double-blind, sham-controlled phase II trial**

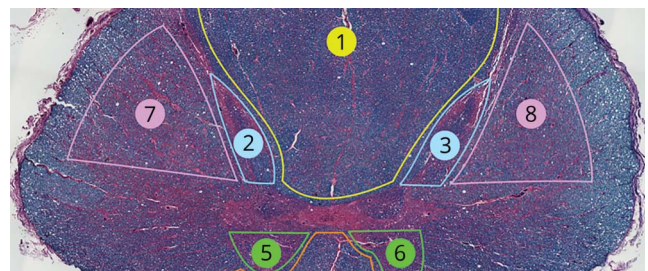
A. Bruno

Correction

322 **Risks and benefits of clopidogrel–aspirin in minor stroke or TIA: Time course analysis of CHANCE**

Department

In the Next Issue of *Neurology*[®]



➔ **Cover image**

H&E-LFB (luxol fast blue, hematoxylin, and eosin) stained spinal cord section with eight spatially segregated regions of interest, identified based on anatomical atlases.

See page 302

Neurology®

93 (7)

Neurology 2019;93:e653-322

This information is current as of January 1, 2019

Updated Information & Services

including high resolution figures, can be found at:
<http://n.neurology.org/content/93/7.full>

Permissions & Licensing

Information about reproducing this article in parts (figures, tables) or in its entirety can be found online at:
http://www.neurology.org/about/about_the_journal#permissions

Reprints

Information about ordering reprints can be found online:
<http://n.neurology.org/subscribers/advertise>

Neurology® is the official journal of the American Academy of Neurology. Published continuously since 1951, it is now a weekly with 48 issues per year. Copyright . All rights reserved. Print ISSN: 0028-3878. Online ISSN: 1526-632X.

