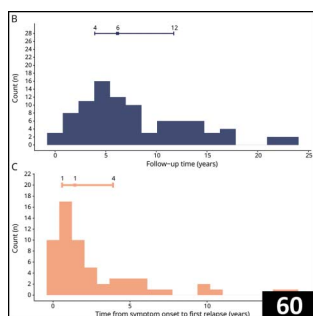



**53**


Select figures listed on the Table of Contents only appear within the full-length articles online.

## In Focus

- 47 **Spotlight on the July 9 issue**
- 48 **This Week's *Neurology*® Podcast**

## Editorials

- 49 **Mapping proprioceptive function using corticokinematic coherence in ataxias**  
R.J. Thomas and P.J. Morrison
- 51 **Everolimus for cognition/autism in children with tuberous sclerosis complex: Definitive outcomes deferred**  
K.C. Ess and D.N. Franz

## Articles: Short Format

 Full articles at [Neurology.org/N](http://Neurology.org/N)

- 53 **Evidence for genetically determined degeneration of proprioceptive tracts in Friedreich ataxia**  
B. Marty, G. Naeije, M. Bourguignon, V. Wens, V. Jousmäki, D.R. Lynch, W. Gaetz, S. Goldman, R. Hari, M. Pandolfo, and X. De Tiège  
[↻ Editorial, p. 49](#)
- 54 **Age at onset in genetic prion disease and the design of preventive clinical trials**  
E.V. Minikel, S.M. Vallabh, M.C. Orseth, J.-P. Brandel, S. Haïk, J.-L. Laplanche, I. Zerr, P. Parchi, S. Capellari, J. Safar, J. Kenny, J.C. Fong, L.T. Takada, C. Ponto, P. Hermann, T. Knipper, C. Stehmann, T. Kitamoto, R. Ae, T. Hamaguchi, N. Sanjo, T. Tsukamoto, H. Mizusawa, S.J. Collins, R. Chiesa, I. Roïter, J. de Pedro-Cuesta, M. Calero, M.D. Geschwind, M. Yamada, Y. Nakamura, and S. Mead
- 55 **Use of  $\beta$ 2-adrenoreceptor agonist and antagonist drugs and risk of Parkinson disease**  
F. Hopfner, M. Wod, G.U. Höglinger, M. Blaabjerg, T.W. Rösler, G. Kühlenbäumer, K. Christensen, G. Deuschl, and A. Pottegård  
[↻ CME Course](#) [🎧 Podcast](#)
- 56 **Neuropathy with vascular endothelial growth factor receptor tyrosine kinase inhibitors: A meta-analysis**  
B. Roy, A. Das, K. Ashish, D. Bandyopadhyay, A. Maiti, S. Chakraborty, M.E. Stone, L.L. Philpotts, R.J. Nowak, and H.S. Patwa
- 57 **Natural course of scoliosis and lifetime risk of scoliosis surgery in spinal muscular atrophy**  
C.A. Wijngaarde, R.C. Brink, F.A.S. de Kort, M. Stam, L.A.M. Otto, F.-L. Asselman, B. Bartels, R.P.A. van Eijk, J. Sombroek, I. Cuppen, M. Verhoef, L.H. van den Berg, R.I. Wadman, R.M. Castelein, and W.-L. van der Pol  
[↻ CME Course](#)
- 58 **Epilepsy duration and seizure outcome in epilepsy surgery: A systematic review and meta-analysis**  
J. Bjellvi, I. Olsson, K. Malmgren, and K. Wilbe Ramsay  
[Open Access Article](#)
- 59 **Risks of 23 specific malformations associated with prenatal exposure to 10 antiepileptic drugs**  
P.-O. Blotière, F. Raguideau, A. Weill, E. Elefant, I. Perthus, V. Goulet, F. Rouget, M. Zureik, J. Coste, and R. Dray-Spira
- 60 **Epidemiology of NMOSD in Sweden from 1987 to 2013: A nationwide population-based study**  
D.I. Jonsson, O. Sveinsson, R. Hakim, and L. Brundin  
[Open Access Article](#)

## ↻ Ahead of Print Articles and Editorials

[NPub.org/headofprint](http://NPub.org/headofprint)
*Continued*

61 **Repetitive TMS does not improve cognition in patients with TBI: A randomized double-blind trial**

I.S. Neville, A.L. Zaninotto, C.Y. Hayashi, P.A. Rodrigues, R. Galhardoni, D. Ciampi de Andrade, A.R. Brunoni, R.L. Oliveira Amorim, M.J. Teixeira, and W.S. Paiva

[Open Access Article](#) [↔ Class of Evidence](#)

62 **A randomized controlled trial with everolimus for IQ and autism in tuberous sclerosis complex**

I.E. Overwater, A.B. Rietman, S.E. Mous, K. Bindels-de Heus, D. Rizopoulos, L.W. ten Hoopen, T. van der Vaart, F.E. Jansen, Y. Elgersma, H.A. Moll, and M.-C.Y. de Wit, on behalf of the ENCORE Expertise Centre for Neurodevelopmental Disorders

[↔ Editorial, p. 51](#) [↔ Class of Evidence](#)

### What's Happening

63 **What's happening in *Neurology*<sup>®</sup> Clinical Practice**

64 **What's happening in *Neurology*<sup>®</sup> Neuroimmunology & Neuroinflammation**

65 **What's happening in Innovations in Care Delivery**

### Views & Reviews

66 **ALS drug development guidances and trial guidelines: Consensus and opportunities for alignment**

J.A. Andrews, L.I. Bruijn, and J.M. Shefner

[Open Access](#)

72 **Subthreshold amyloid and its biological and clinical meaning: Long way ahead**

G.N. Bischof and H.I.L. Jacobs

### Reflections: Neurology and the Humanities

80 **Hearing about your diagnosis while walking on the beach**

M. Wynn

[🔊 Audio](#)

### Resident & Fellow Section

81 **Pearls & Oysters: Adolescent-onset adrenomyeloneuropathy and arrested cerebral adrenoleukodystrophy**

J.E. Lin, E.A. Armour, A. Heshmati, C. Umandap, J. Couto, A.D. Iglesias, E.J. Mallack, and J.M. Bain

e210 **Right Brain: A state of emotional aphasia**

E. Al-Sibahee

e212 **Teaching NeuroImages: Pericallosal curvilinear lipoma**

Y. Fu, X. Fang, Y. Li, and X. Zhao

e214 **Teaching Video NeuroImages: Tongue myokymia in hypoglossal neuropathy**

T.C. Wee, R. Markus, and N.G. Simon

[↔ Video](#)

### Disputes & Debates: Editors' Choice

85 **Editors' note: ALS-specific cognitive and behavior changes associated with advancing disease stage in ALS**

A. Lewis and S. Galetta

85 **Reader response: ALS-specific cognitive and behavior changes associated with advancing disease stage in ALS**

J. Raaphorst, E. Beeldman, R. Govaarts, B. Schmand, and M. de Visser

86 **Author response: ALS-specific cognitive and behavior changes associated with advancing disease stage in ALS**

S. Abrahams and C. Crockford

87 **Editors' note: To harvest?: A reality-based ethical dilemma and fictional dialogue**

A. Lewis and S. Galetta

87 **Reader response: To harvest?: A reality-based ethical dilemma and fictional dialogue**

N.K. Sethi

88 **Author response: To harvest?: A reality-based ethical dilemma and fictional dialogue**

M.S. Smith and J.E. Riggs

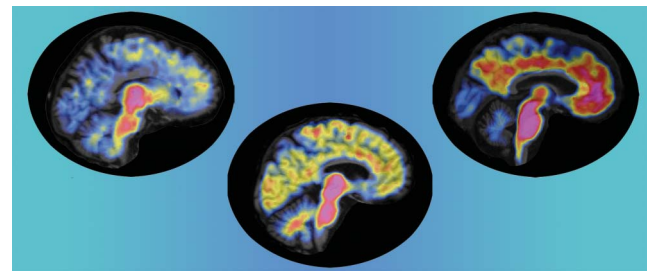
### Corrections

88 **TDP43 pathology in the brain, spinal cord, and dorsal root ganglia of a patient with FOSMN**

88 **Journal Club: Florbetapir imaging in cerebral amyloid angiopathy-related hemorrhages**

### Department

In the Next Issue of *Neurology*<sup>®</sup>



[↔ Cover image](#)

Three cases demonstrating regional differences in amyloid accumulation: a young male far below the threshold for global amyloid positivity, a middle-aged male close to the global amyloid cut-off, and an older male with elevated amyloid burden. Stylized by Kaitlyn Aman Ramm, *Neurology* Editorial Assistant.

[See page 72](#)

# Neurology®

93 (2)  
*Neurology* 2019;93:e88-87

**This information is current as of January 1, 2019**

**Updated Information & Services**

including high resolution figures, can be found at:  
<http://n.neurology.org/content/93/2.full>

**Permissions & Licensing**

Information about reproducing this article in parts (figures, tables) or in its entirety can be found online at:  
[http://www.neurology.org/about/about\\_the\\_journal#permissions](http://www.neurology.org/about/about_the_journal#permissions)

**Reprints**

Information about ordering reprints can be found online:  
<http://n.neurology.org/subscribers/advertise>

*Neurology*® is the official journal of the American Academy of Neurology. Published continuously since 1951, it is now a weekly with 48 issues per year. Copyright . All rights reserved. Print ISSN: 0028-3878. Online ISSN: 1526-632X.

