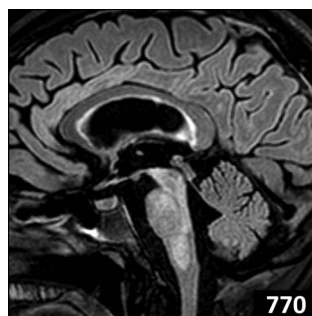
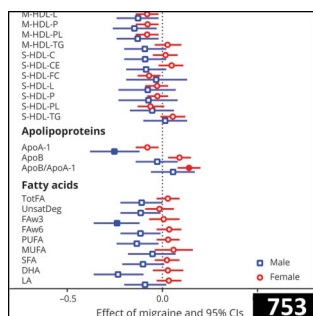

e1935

770

Select figures listed on the Table of Contents only appear within the full-length articles online.

In Focus

733 **Spotlight on the April 16 issue**

734 **This Week's *Neurology*® Podcast**

Editorials

735 **Leveraging human genetics to inform intervention strategies for multiple sclerosis**

A. Goris and B. Dubois

737 **Effectiveness of oral multiple sclerosis therapies in clinical context**

T. Kalincik

739 **A nurse-led model increases quality of care in Parkinson disease**

P. Calabresi, P. Nigro, and H.B. Schwarz

741 **Turning the tide on targeted treatments for neurodevelopmental disorders**

R. Hagerman and R. Tuchman

Articles: Short Format

Full articles at Neurology.org/N

743 **Effect of age at puberty on risk of multiple sclerosis: A mendelian randomization study**

A. Harroud, J.A. Morris, V. Forgetta, R. Mitchell, G.D. Smith, S.J. Sawcer, and J.B. Richards

➔ Editorial, p. 735

744 **Comparative effectiveness of teriflunomide and dimethyl fumarate: A nationwide cohort study**

M.D. Buron, T.A. Chalmer, F. Sellebjerg, J. Frederiksen, M.K. Góra, Z. Illes, M. Kant, Z. Mezei, T. Petersen, P.V. Rasmussen, H. Roshanifefat, H. Hassanpour-Kalam-Roudy, T. Sejbæk, A. Tsakiri, A. Weglewski, P.S. Sorensen, and M. Magyari

➔ Editorial, p. 737 ➔ Podcast ➔ Class of Evidence

745 **Progressive parkinsonism in older adults is related to the burden of mixed brain pathologies**

A.S. Buchman, L. Yu, R.S. Wilson, S.E. Leurgans, S. Nag, J.M. Shulman, L.L. Barnes, J.A. Schneider, and D.A. Bennett

746 **Randomized trial of care management to improve Parkinson disease care quality**

K.I. Connor, E.M. Cheng, F. Barry, H.C. Siebens, M.L. Lee, D.A. Ganz, B.S. Mittman, M.K. Connor, L.K. Edwards, M.G. McGowan, and B.G. Vickrey

➔ Editorial, p. 739 ➔ Class of Evidence

747 **Top-down alteration of functional connectivity within the sensorimotor network in focal dystonia**

G. Battistella and K. Simonyan

748 **X-linked myotubular myopathy: A prospective international natural history study**

M. Anoussamy, C. Lilien, T. Gidaro, E. Gargaun, V. Chê, U. Schara, A. Gangfuß, A. D'Amico, J.J. Dowling, B.T. Darras, A. Daron, A. Hernandez, C. de Lattre, J.-M. Arnal, M. Mayer, J.-M. Cuisset, C. Vuillerot, S. Fontaine, R. Bellance, V. Biancalana, A. Buj-Bello, J.-Y. Hogrel, H. Landy, and L. Servais

749 **Increase of arginine dimethylation correlates with the progression and prognosis of ALS**

K. Ikenaka, N. Atsuta, Y. Maeda, Y. Hotta, R. Nakamura, K. Kawai, D. Yokoi, A. Hirakawa, A. Taniguchi, M. Morita, K. Mizoguchi, H. Mochizuki, K. Kimura, M. Katsuno, and G. Sobue

750 **KLOTHO heterozygosity attenuates APOE4-related amyloid burden in preclinical AD**

C.M. Erickson, S.A. Schultz, J.M. Oh, B.F. Darst, Y. Ma, D. Norton, T. Betthausen, C.L. Gallagher, C.M. Carlsson, B.B. Bendlin, S. Asthana, B.P. Hermann, M.A. Sager, K. Blennow, H. Zetterberg, C.D. Engelman, B.T. Christian, S.C. Johnson, D.B. Dubal, and O.C. Okonkwo

➔ Ahead of Print Articles and Editorials

NPub.org/headofprint

Continued

- 751 **Comment: Longevity gene *KLOTHO* may play a role in Alzheimer disease**
A.C. van Harten
- 752 **A prospective study of serum metabolites and risk of ischemic stroke**
D. Sun, S. Tiedt, B. Yu, X. Jian, R.F. Gottesman, T.H. Mosley, E. Boerwinkle, M. Dichgans, and M. Fornage
[Open Access Article](#)
- 753 **Large-scale plasma metabolome analysis reveals alterations in HDL metabolism in migraine**
G.L.J. Onderwater, L. Ligthart, M. Bot, A. Demirkan, J. Fu, C.J.H. van der Kallen, L.S. Vijfhuizen, R. Pool, J. Liu, F.H.M. Vanmolkot, M. Beekman, K.-x. Wen, N. Amin, C.S. Thesing, J.A. Pijpers, D.A. Kies, R. Zielman, I. de Boer, M.M.J. van Greevenbroek, I.C.W. Arts, Y. Milaneschi, M.T. Schram, P.C. Dagnelie, L. Franke, M.A. Ikram, M.D. Ferrari, J.J. Goeman, P.E. Slagboom, C. Wijmenga, C.D.A. Stehouwer, D.I. Boomsma, C.M. van Duijn, B.W. Penninx, P.A.C. 't Hoen, G.M. Terwindt, and A.M.J.M. van den Maagdenberg, on behalf of the BBMRI Metabolomics Consortium
- 754 **Double-blind, randomized, placebo-controlled study of trofinetide in pediatric Rett syndrome**
D.G. Glaze, J.L. Neul, W.E. Kaufmann, E. Berry-Kravis, S. Condon, G. Stoms, S. Oosterholt, O. Della Pasqua, L. Glass, N.E. Jones, and A.K. Percy, on behalf of the Rett 002 Study Group
[CME Course](#) [Editorial, p. 741](#) [Class of Evidence](#)
[Open Access Article](#)
- 755 **Characteristics and predictors of 7- and 30-day hospital readmissions to pediatric neurology**
A. Hong, Y. Shah, K. Singh, S. Karkare, and S. Kothare
[CME Course](#)

What's Happening

- 756 **What's happening in *Neurology*[®] Genetics**

Clinical Implications of Neuroscience Research

- 757 **Nucleocytoplasmic transport: Mechanisms and involvement in neurodegenerative disease**
E.E. Benarroch

Clinical/Scientific Notes

- 765 **Tocilizumab treatment in severe recurrent anti-MOG-associated optic neuritis**
H. Hayward-Koennecke, M. Reindl, R. Martin, and S. Schippling
[Class of Evidence](#)

Visions

- 768 **Persistent connection**
A. Silverman

NeuroImages

- 770 **Exceptional involvement of medulla oblongata in Wilson disease**
A. Poujois, A. Guillonnet, and F. Woimant

Resident & Fellow Section

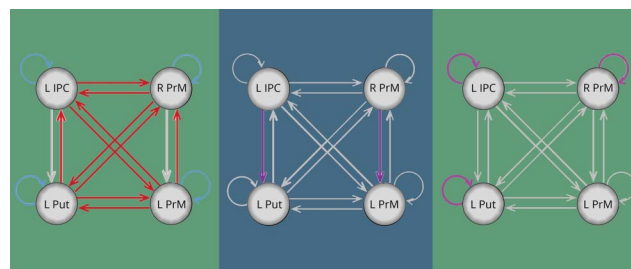
- 772 **Right Brain: Silence**
R. Varela
- e1933 **Teaching NeuroImages: The curious case of the brainstem kink**
R. Srivastava and F.-D. Morneau-Jacob
- e1935 **Teaching NeuroImages: Waardenburg syndrome type 2**
M. Rosa Júnior, L.M. Santana, B.F. Ramos, and H.F. Ramos
- e1937 **Teaching NeuroImages: A disintegrating rock**
M.A. Hawkes and A.A. Rabinstein

Disputes & Debates: Editors' Choice

- 774 **Editors' note: The systolic blood pressure sweet spot after intracerebral hemorrhage: 130 mm Hg?**
A. Ganesh and S. Galetta
- 774 **Reader response: The systolic blood pressure sweet spot after intracerebral hemorrhage: 130 mm Hg?**
S. Munakomi
- 775 **Author response: The systolic blood pressure sweet spot after intracerebral hemorrhage: 130 mm Hg?**
G. Kapinos and D.F. Hanley
- 776 **Editors' note: Cerebral ischemia and deterioration with lower blood pressure target in intracerebral hemorrhage**
J.E. Siegler III and S. Galetta
- 776 **Reader response: Cerebral ischemia and deterioration with lower blood pressure target in intracerebral hemorrhage**
S. Lattanzi and M. Silvestrini

Department

In the Next Issue of *Neurology*[®]



[Cover image](#)

Schematic representations of the significant excitatory connections, inhibitory connections, and nonsignificant connections in patients with spasmodic dysphonia with and without dystonic tremor of voice and controls. Stylized by Kaitlyn Aman Ramm, *Neurology* Editorial Assistant.
[See page 747](#)

Neurology®

92 (16)

Neurology 2019;92:e1937-776

This information is current as of January 1, 2019

Updated Information & Services

including high resolution figures, can be found at:
<http://n.neurology.org/content/92/16.full>

Permissions & Licensing

Information about reproducing this article in parts (figures, tables) or in its entirety can be found online at:
http://www.neurology.org/about/about_the_journal#permissions

Reprints

Information about ordering reprints can be found online:
<http://n.neurology.org/subscribers/advertise>

Neurology® is the official journal of the American Academy of Neurology. Published continuously since 1951, it is now a weekly with 48 issues per year. Copyright . All rights reserved. Print ISSN: 0028-3878. Online ISSN: 1526-632X.

