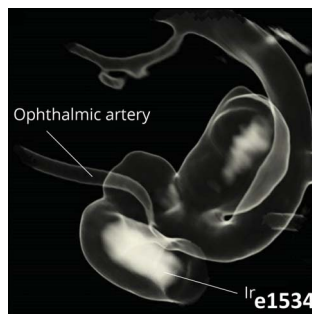


604



e1532



Ir e1534

Select figures listed on the Table of Contents only appear within the full-length articles online.

In Focus

- 589 **Spotlight on the March 26 issue**
- 590 **This Week's *Neurology*® Podcast**

Editorials

- 591 **Muscle at the junction: Where next generation sequencing is sending us**
N.E. Johnson and R. Butterfield
- 593 **Does reducing blood pressure and cholesterol provide any HOPE for preventing cognitive decline and dementia?**
C. Chen and C.S. Anderson
- 595 **High serum neurofilament light chain predicts a worse fate in early parkinsonism**
R.S. Akhtar and T. Mano

- 597 **Managing treatment fluctuations in Parkinson disease: “On” again–, “off” again**
W.S. Metzger and F.B. Rodrigues
- 599 **Teaching neurology: Guided walk in the park or solo free-climb?**
R.M.E. Salas and J.T. Sladky

In Memoriam

- 601 **Glenn A. Mackin, MD (1954–2018)**
S.L. Lewis and J.L. Bernat

Articles: Short Format

Full articles at Neurology.org/N

- 603 **Myasthenic congenital myopathy from recessive mutations at a single residue in Na_v1.4**
N. Elia, J. Palmio, M.S. Castañeda, P.B. Shieh, M. Quinonez, T. Suominen, M.G. Hanna, R. Männikkö, B. Udd, and S.C. Cannon
[Editorial, p. 591](#) [Open Access Article](#)
- 604 **Muscular and extramuscular features of myositis patients with anti-U1-RNP autoantibodies**
M. Casal-Dominguez, I. Pinal-Fernandez, A.M. Corse, J. Paik, J. Albayda, L. Casciola-Rosen, C. Johnson, S.K. Danoff, L. Christopher-Stine, E. Tiniakou, and A.L. Mammen
- 605 **Genetic basis of motoric cognitive risk syndrome in the Health and Retirement Study**
S. Sathyan, T. Wang, E. Ayers, and J. Verghese
- 606 **Effects of blood pressure and lipid lowering on cognition: Results from the HOPE-3 study**
J. Bosch, M. O'Donnell, B. Swaminathan, E.M. Lonn, M. Sharma, G. Dagenais, R. Diaz, K. Khunti, B.S. Lewis, A. Avezum, C. Held, M. Keltai, C. Reid, W.D. Toff, A. Dans, L.A. Leiter, K. Sliwa, S.F. Lee, J.M. Pogue, R. Hart, and S. Yusuf, on behalf of the HOPE-3 Investigators
[Editorial, p. 593](#) [Class of Evidence](#)
- 607 **Effect of prolonged antibiotic treatment on cognition in patients with Lyme borreliosis**
A. Berende, H.J.M. ter Hofstede, F.J. Vos, M.L. Vogelaar, H. van Middendorp, A.W.M. Evers, R.P.C. Kessels, and B.J. Kullberg
[CME Course](#) [Open Access Article](#) [Podcast](#) [Class of Evidence](#)
- 608 **Dysautonomia is associated with structural and functional alterations in Parkinson disease**
S.J. Chung, Y.J. Bae, S. Jun, H.S. Yoo, S.W. Kim, Y.H. Lee, Y.H. Sohn, S.-K. Lee, J.-K. Seong, and P.H. Lee
- 609 **Levodopa-induced dyskinesia is closely linked to progression of frontal dysfunction in PD**
H.S. Yoo, S.J. Chung, Y.H. Lee, H.S. Lee, B.S. Ye, Y.H. Sohn, and P.H. Lee

➔ Ahead of Print Articles and Editorials

NPub.org/aheadofprint

Continued

- 610 **Serum NFL discriminates Parkinson disease from atypical parkinsonisms**
T.M. Marques, A. van Rumund, P. Oeckl, H.B. Kuiperij, R.A.J. Esselink, B.R. Bloem, M. Otto, and M.M. Verbeek
🔗 Editorial, p. 595 🔗 Class of Evidence
- 611 **Increased dose of carbidopa with levodopa and entacapone improves “off” time in a randomized trial**
C. Trenkwalder, M. Kuoppamäki, M. Vahteristo, T. Müller, and J. Ellmén
🔗 Editorial, p. 597 [Open Access Article](#) 🔗 Class of Evidence
- 612 **Socioeconomic status and disability progression in multiple sclerosis: A multinational study**
K.E. Harding, M. Wardle, R. Carruthers, N. Robertson, F. Zhu, E. Kingwell, and H. Tremlett
🔗 Patient Page
- 613 **Menarche, pregnancies, and breastfeeding do not modify long-term prognosis in multiple sclerosis**
M.I. Zuluaga, S. Otero-Romero, A. Rovira, S. Perez-Hoyos, G. Arrambide, L. Negrotto, I. Galán, J. Río, M. Comabella, C. Nos, M.J. Arévalo, A. Vidal-Jordana, J. Castelló, B. Rodríguez, L. Midaglia, P. Mulero, R. Mitjana, C. Auger, J. Sastre-Garriga, X. Montalban, and M. Tintoré
[Open Access Article](#)
- 614 **A novel biomarker-based prognostic score in acute ischemic stroke: The CoRisk score**
G.M. De Marchis, T. Dankowski, I.R. König, J. Fladt, F. Fluri, H. Gensicke, C. Foerch, O. Findling, R. Kurmann, U. Fischer, A. Luft, D. Buhl, S.T. Engelter, P.A. Lyrer, M. Christ-Crain, M. Arnold, and M. Katan
🔗 CME Course

What's Happening

- 615 **What's happening in *Neurology*[®] *Neuroimmunology* & *Neuroinflammation***

AAN Special Article

- 616 **Humanistic dimensions of professionalism in the practice of neurology**
American Academy of Neurology Ethics, Law, and Humanities Committee

Contemporary Issues: Innovations in Education

- 619 **Core curriculum guidelines for a required clinical neurology experience**
J.E. Safdieh, R. Govindarajan, D.J. Gelb, Y. Odia, and M. Soni
🔗 Editorial, p. 599 [Open Access](#)

NeuroImages

- 627 **Visibly enlarged peripheral nerves in lepromatous leprosy**
J.Z. Ding and P. Legua

Resident & Fellow Section

- 629 **Resident & Fellow Rounds**
J.J. Millichap and R.E. Strowd III
- 631 **Global & Community Health: Brief in-hospital cognitive screening anticipates complex admissions and may detect dementia**
D. Bissig and C.S. DeCarli

- e1526 **Clinical Reasoning: A teenager with persistent headache**
Y. Hu, Z. Tang, W. Zhu, and S. Xu
- e1532 **Teaching NeuroImages: Scleral thickening and optic disc edema from glycosaminoglycan deposition in Hunter syndrome**
M.D. Seay, H. Lau, and S.L. Galetta
- e1534 **Teaching NeuroImages: Raccoon eye in subarachnoid hemorrhage**
M. Aalbers and J.M.C. van Dijk

Patient Page

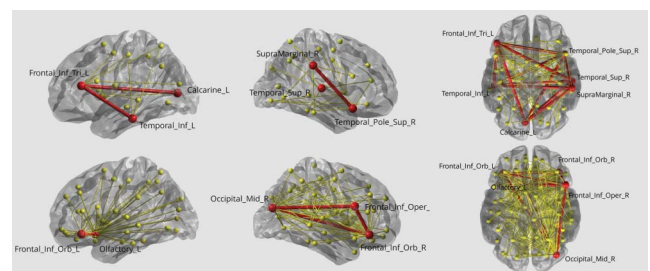
- e1536 **What is the impact of socioeconomic status on multiple sclerosis?**
D.S. Conway

Disputes & Debates: Editors' Choice

- 635 **Editors' note: Disability in adults with arthrogyrosis is severe, partly invisible, and varies by genotype**
A. Ganesh and S. Galetta
- 635 **Reader response: Disability in adults with arthrogyrosis is severe, partly invisible, and varies by genotype**
B. Sawatzky and J.G. Hall
- 636 **Author response: Disability in adults with arthrogyrosis is severe, partly invisible, and varies by genotype**
S. Dai, K. Dieterich, M. Jaeger, B. Wuyam, P.-S. Jouk, and D. Pérennou
- 636 **Editors' note: A family-based study into penetrance in facioscapulohumeral muscular dystrophy type 1**
A. Ganesh and S. Galetta
- 637 **Reader response: A family-based study into penetrance in facioscapulohumeral muscular dystrophy type 1**
T.N. Brignol and J.A. Urtizberea
- 637 **Author response: A family-based study into penetrance in facioscapulohumeral muscular dystrophy type 1**
N.C. Voermans and R.J. Goselink

Department

In the Next Issue of *Neurology*[®]



🔗 Cover image

Structural white matter connectivity in patients with PD.
[See page 608](#)

Neurology®

92 (13)

Neurology 2019;92:e1517-637

This information is current as of January 1, 2019

Updated Information & Services

including high resolution figures, can be found at:
<http://n.neurology.org/content/92/13.full>

Permissions & Licensing

Information about reproducing this article in parts (figures, tables) or in its entirety can be found online at:
http://www.neurology.org/about/about_the_journal#permissions

Reprints

Information about ordering reprints can be found online:
<http://n.neurology.org/subscribers/advertise>

Neurology® is the official journal of the American Academy of Neurology. Published continuously since 1951, it is now a weekly with 48 issues per year. Copyright . All rights reserved. Print ISSN: 0028-3878. Online ISSN: 1526-632X.

