

Prestroke physical activity could influence acute stroke severity (part of PAPSIGOT)

Malin Reinholdsson, PT, MS, Annie Palstam, PT, PhD, and Katharina S. Sunnerhagen, MD, PhD, Prof

Neurology® 2018;91:e1461-e1467. doi:10.1212/WNL.0000000000006354

Correspondence

Dr. Reinholdsson
malin.reinholdsson@
vgregion.se

Abstract

Objective

To investigate the influence of prestroke physical activity (PA) on acute stroke severity.

Methods

Data from patients with first stroke were retrieved from registries with a cross-sectional design. The variables were PA, age, sex, smoking, diabetes, hypertension and statin treatment, stroke severity, myocardial infarction, new stroke during hospital stay, and duration of inpatient care at stroke unit. PA was assessed with Saltin-Grimby's 4-level Physical Activity Level Scale, and stroke severity was assessed with the National Institutes of Health Stroke Scale (NIHSS). Logistic regression was used to predict stroke severity, and negative binomial regression was used to compare the level of PA and stroke severity.

Results

The study included 925 patients with a mean age of 73.1 years, and 45.2% were women. Patients who reported light or moderate PA levels were more likely to present a mild stroke (NIHSS score 0 to 5) compared with physically inactive patients in a model that also included younger age as a predictor (odds ratio = 2.02 for PA and odds ratio = 0.97 for age). The explanatory value was limited at 6.8%. Prestroke PA was associated with less severe stroke, and both light PA such as walking at least 4 h/wk and moderate PA 2–3 h/wk appear to be beneficial. Physical inactivity was associated with increased stroke severity.

Conclusions

This study suggests that PA and younger age could result in a less severe stroke. Both light PA such as walking at least 4 h/wk and moderate PA 2–3 h/wk appear to be beneficial.

RELATED ARTICLE

Editorial

Prestroke physical activity to reduce stroke severity: Moving to lower risk with light activity

Page 727

From the Department of Clinical Neuroscience (M.R., A.P., K.S.S.), Institute of Neuroscience and Physiology, Sahlgrenska Academy at University of Gothenburg; Department of Occupational Therapy and Physiotherapy (M.R.), Sahlgrenska University Hospital, Gothenburg, Sweden.

Go to Neurology.org/N for full disclosures. Funding information and disclosures deemed relevant by the authors, if any, are provided at the end of the article.

The Article Processing Charge was funded by Swedish Research Council VR 2017-00946, The Local Research and Development Board for Gothenburg and Södra Bohuslän, Renée Eanders foundation, the Swedish Stroke Association, the Swedish Heart-Lung Foundation, the Swedish Brain Foundation and Promobilia.

Physical Activity Pre-Stroke In Gothenburg (PAPSIGOT) is registered in the Swedish registry of trials ID: 246671.

This is an open access article distributed under the terms of the Creative Commons Attribution License 4.0 (CC BY), which permits unrestricted use, distribution, and reproduction in any medium, provided the original work is properly cited.

Glossary

ANOVA = analysis of variance; NIHSS = National Institutes of Health Stroke Scale; SGPALS = Saltin-Grimby Physical Activity Level Scale; PA = physical activity.

Stroke is the second leading cause of disability-adjusted life-years lost worldwide after ischemic heart disease.¹ Ten modifiable risk factors are said to be associated with 90% of the causes of all stroke: history of hypertension, physical inactivity, high apolipoprotein, unhealthy diet, higher waist-to-hip ratio, psychosocial stress, current smoking, cardiac causes, alcohol consumption, and diabetes mellitus.² Physical inactivity causes morbidity, mortality, and major economic burden worldwide. However, although physical activity (PA) is a well-known, self-monitored, cost-efficient method to increase health in individuals of all ages, physical inactivity is a global pandemic.³ Previous research in animals has shown that PA before stroke has a neuroprotective effect leading to less severe stroke with fewer neurologic deficits^{4,5} and better recovery.⁵ Human studies have, however, been less consistent. Some studies have shown that PA before stroke is associated with milder neurologic symptoms after stroke,^{6–10} whereas another showed no effect.¹¹

The objective was to investigate the influence of prestroke PA, age, sex, smoking, diabetes, and protective treatments such as statin and hypertension treatments on acute stroke severity. We hypothesized that prestroke PA would positively influence acute stroke severity.

Methods

The data used in this study were based on the Physical Activity Pre-Stroke In GOTHENBURG population, with data from the Swedish Stroke Register (Riksstroke)^{12,13} and the local stroke register, Väststroke. The personal identification numbers used in Sweden allow for linkage between registries, and anonymous data were received (linkage was performed by the Register service at the National Board of Health and Welfare). The reason for combining 2 registries was that one register could not deliver all variables. The study was a cross-sectional, nonexperimental study in which data on PA were collected retrospectively.

Population

We extracted clinical data from 2,233 patients (1,158 men and 1,075 women) with stroke who were admitted to Sahlgrenska University Hospital from November 1, 2014, to April 30, 2016. The inclusion criteria were first-time stroke, receipt of care at stroke units at Sahlgrenska University Hospital in Gothenburg, and assessment with measures of stroke severity and PA. The exclusion criteria were former stroke or incomplete data.

Descriptive variables

The ICD-10 was used to identify patients with diagnoses of either intracerebral hemorrhage or ischemic stroke.

Information about the number of days of inpatient care at the stroke unit and occurrence of new stroke or myocardial infarction during inpatient stay were retrieved from the registries.

Dependent variable

Stroke severity at hospital admittance was assessed with the National Institutes of Health Stroke Scale (NIHSS; 0–42), for which a higher score indicates greater stroke severity.¹⁴ The cutoff scores were mild stroke (0–5), moderate stroke (6–14), severe stroke (15–24), and very severe stroke (≥ 25).¹⁵ The NIHSS was dichotomized into mild stroke (NIHSS score 0–5) and moderate to severe stroke (NIHSS score 6–42) in the regression analyses.

Selection of independent variables

The independent variables selected were PA, age, sex, smoking, diabetes, and protective treatments such as statin or hypertension treatments. Prestroke PA was assessed with the Saltin-Grimby Physical Activity Level Scale (SGPALS).^{16,17} The SGPALS is a self-reported 4-level scale with the following levels: (1) physically inactive, (2) some PA for at least 4 h/wk (light PA), (3) regular PA and training for at least 2–3 h/wk (moderate PA), and (4) regular hard physical training for competition sports several times per week (vigorous PA).^{16,17} Patients were asked about their PA at their first encounter with a physical therapist at the stroke unit with the following question: “How much did you move or exercise during leisure time before stroke? Try to estimate an average.” The physical therapist asked the patient to be precise about the previous activity level with the help of follow-up questions about intensity, duration, and type of activity, and relatives were asked to confirm the PA level whenever needed. The SGPALS was dichotomized into physically inactive patients (level 1) and light, moderate, and vigorous physically active patients (level 2–4) in the regression analyses. The SGPALS was divided into 3 groups (levels 3 and 4 were merged) to discover differences between different levels of PA in negative binomial regression analyses.¹⁷

Data analyses

IBM SPSS Statistics 24 was used for statistical analyses. Descriptive data are presented as mean with SD for continuous variables or number (n) and percentage (%) for categorical variables. The significance level was adjusted to $p < 0.002$ according to the Bonferroni correction. Differences between patients included in the study and patients with missing assessments (NIHSS and SGPALS) were analyzed with independent samples *t* tests for age and χ^2 tests for sex. Non-parametric statistics were used because of the non-normal distribution of the data.

Negative binomial regression analyses with log link were performed to explore relationships between the levels of prestroke PA (SGPALS) and stroke severity (NIHSS). The NIHSS was defined as the dependent variable (continuous scale), and the SGPALS score divided into 3 levels were defined as factors.

Logistic regression was used to assess the effect of a set of predictors (PA, age, sex, smoking, diabetes, and protective treatments such as statin or hypertension treatments) on the dependent variable, defined as stroke severity (NIHSS). The following steps for the multiple regression model building were followed.^{18,19}

1. Cross-tabulation was performed between each independent variable and the dependent variable to detect small or redundant groups, followed by dichotomization when needed.
2. Logistic regression (univariate analyses) was performed separately between each independent variable and the dependent variable.
3. Logistic regression (multivariate analysis) was performed backward with the remaining independent variables with $p < 0.25$. The least significant variables were removed one at a time until a model with significant independent variables was found.
4. The predictor model with the fewest independent variables was chosen, and Nagelkerke's²⁰ determination coefficient, R^2 , was registered.

The goodness of explanatory variables was calculated with the Hosmer and Lemeshow test, and the area under the curve in a receiver operating characteristic curve was computed. A 2-way analysis of variance (ANOVA) was conducted to explore the possible interaction between independent variables in the final model on stroke severity (NIHSS).

Standard protocol approvals, registrations, and patient consents

The Swedish Data Protection Authority allows handling of data generated within the framework of quality registers as an exception from the general rule of patient consent in view of public interest because it provides improvement of the quality of care and treatment. Furthermore, according to the Personal Data Act (Swedish law No. SFS 1998:204), no informed consent is needed to collect data from medical charts for clinical purposes and quality control. The study was approved by the Regional Ethical Board of Gothenburg on May 4, 2016 (registration number: 346-16).

Data availability

Data from registries are subject to the Personal Data Act (Swedish law No. SFS 1998:204). Data may be available to researchers upon request, after review of secrecy (contact the author ks.sunnerhagen@neuro.gu.se). According to the Swedish regulation (epn.se/en/start/regulations/), the permission to use data can only be according to application and approval from the ethical board.

Results

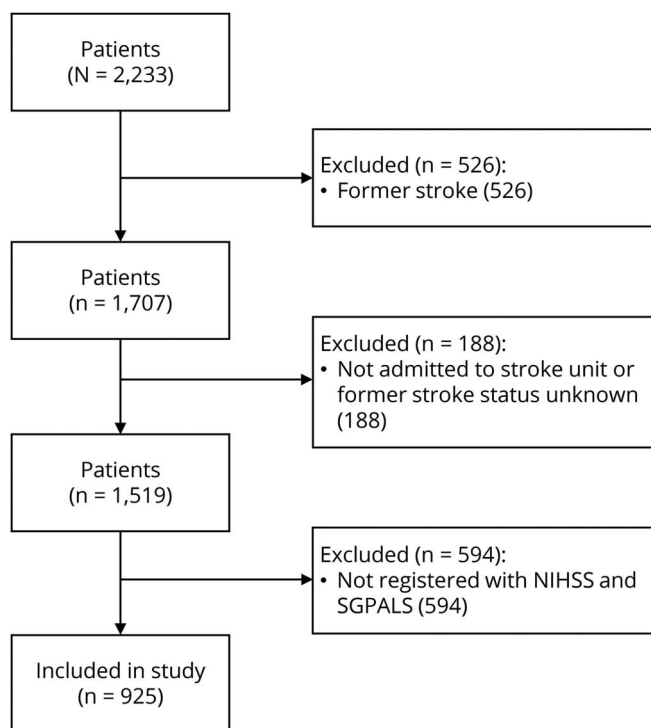
Of the 2,233 patients admitted with stroke from November 1, 2014, to April 30, 2016, 1,308 patients were excluded (figure).

The final sample included 925 patients with stroke, with a mean age of 73 years (range 20–104) and 45.2% women. Ischemic stroke was the most common cause of stroke (93.8%), and 5.8% had cerebral hemorrhage. A majority of the patients were assessed as having a mild stroke (79.8%) and 34.2% had 0 points on the NIHSS after admission to hospital. The cutoff scores for the NIHSS were mild stroke (0–5), moderate stroke (6–14), severe stroke (15–24), and very severe stroke (≥ 25).¹⁵ Half of the population (52.0% of patients) reported that they were physically inactive before their stroke (table 1).

Excluded patients with missing NIHSS and SGPALS assessments were compared with patients included in the study. The excluded patients were older with a mean age of 76 years ($p = 0.001$) and contained more women (53.5%; $p = 0.001$) than the included group.

The physically inactive group had more severe stroke compared with both the light PA group (level 2; $p < 0.001$) and the moderate PA group (level 3–4; $p < 0.001$) when analyzed with negative binomial regression. There was no significant

Figure Flowchart of participants to describe the included study population



NIHSS = National Institutes of Health Stroke Scale. SGPALS = Saltin-Grimbys Physical Activity Level Scale.

Table 1 Descriptive characteristics of the study population (N = 925), presented in groups based on stroke severity as measured by the NIHSS

Characteristics	Mild stroke (N = 738)	Moderate stroke (N = 146)	Severe and very severe stroke (N = 41)
	Mean (SD)	Mean (SD)	Mean (SD)
Age (y)	72 (14)	78 (13)	76 (15)
Duration of stay at stroke unit (d)	9.7 (8.3)	18.2 (13.1)	26.4 (16.7)
Total duration of hospital stay (d)	11.1 (11.3)	23.0 (18.6)	34.2 (21.8)
Characteristics	Mild stroke (N = 738)	Moderate stroke (N = 146)	Severe and very severe stroke (N = 41)
	n (%)	n (%)	n (%)
Sex (female)	321 (43.5)	76 (52.1)	21 (51.2)
Conditions before stroke			
Diabetes (yes)	131 (17.8)	28 (19.2)	4 (10.0)
Smoking (yes)	105 (15.5)	16 (12.8)	4 (11.8)
Statin treatment (yes)	141 (19.2)	26 (17.8)	12 (29.3)
Hypertension treatment (yes)	414 (56.2)	94 (64.4)	27 (67.5)
PA level before stroke (SGPALS)			
Physically inactive (1)	354 (48.0)	98 (67.1)	29 (70.7)
Light PA (2)	330 (44.7)	42 (28.8)	12 (29.3)
Moderate PA (3)	53 (7.2)	6 (4.1)	0 (0.0)
Vigorous PA (4)	1 (0.1)	0 (0.0)	0 (0.0)
Stroke diagnosis			
Cerebral hemorrhage	43 (5.8)	8 (5.5)	3 (7.3)
Ischemic stroke	692 (93.8)	138 (94.5)	38 (92.7)
Hemorrhage or ischemic stroke	3 (0.4)	0 (0.0)	0 (0.0)
Complications during hospital care			
New stroke	9 (1.2)	7 (4.8)	1 (2.4)
Myocardial infarction	4 (0.5)	3 (2.1)	0 (0.0)

NIHSS = National Institutes of Health Stroke Scale 0–42; SGPALS = Saltin-Grimby Physical Activity Level Scale; 1 = physically inactive; 2 = some PA (light PA) ≥ 4 h/wk; 3 = regular PA and training (moderate PA) ≥ 2 –3 h/wk; 4 = regular hard physical training for competition sports (vigorous PA) several times/wk. Percent (%) is expressed as valid percent. Missing: statin treatment = (n = 3), hypertension treatment = (n = 2), diabetes = (n = 2), and smoking = (n = 87).

difference between the light PA group (level 2) and the moderate PA group (levels 3 and 4) on stroke severity as measured with the NIHSS ($p = 0.140$) (table 2).

After analysis with univariate logistic regression, the variables PA, age, sex, and hypertension treatment ($p < 0.25$) were included in a multivariate analysis. In the multivariate analysis, the variables sex and hypertension were excluded. In the final model, PA and age remained. Patients who had been physically active before their stroke and were younger in age were more likely to have a mild stroke (odds ratio = 2.02 for PA and odds ratio = 0.97 for age). The model predicted 6.8% of stroke severity (table 3). There was no interaction effect between age

and prestroke PA ($p = 0.166$) in a 2-way ANOVA analysis. Patients were divided into 4 groups according to their age (18–45 years, 46–65 years, 66–80 years, and 81–104 years), and prestroke PA was dichotomized.

Discussion

This study suggests that prestroke PA combined with younger age is partially associated with milder stroke, which is in line with 2 previous studies of smaller populations (362 and 159 patients, respectively).^{6,8} The potential risk factors such as sex, smoking, diabetes, and protective treatments such as statin

Table 2 Negative binomial regression analysis comparison between groups based on the physical activity level (SGPALS) and stroke severity (NIHSS), N = 925

	B	p Value	Lower-upper
SGPALS level 1 vs level 2	0.445	<0.001	0.290 to 0.600
SGPALS level 1 vs level 3-4	0.695	<0.001	0.368 to 1.022
SGPALS level 2 vs level 3-4	0.251	0.140	-0.082 to 0.583

NIHSS = National Institutes of Health Stroke Scale 0-42; SGPALS = Saltin-Grimby Physical Activity Level Scale; 1 = physically inactive; 2 = some PA (light PA) ≥ 4 h/wk; 3 = regular PA and training (moderate PA) $\geq 2-3$ h/wk; 4 = regular hard physical training for competition sports (vigorous PA) several times/wk. Significant p values are in bold text.

and hypertension treatment did not influence stroke severity in this study. In similar studies with some methodological differences including the definition of PA, stroke severity assessment, or assessment time, reduced stroke severity in patients who were physically active before stroke have been shown,^{7,9,10} although one study shows no effect.¹¹ One subcategory of PA is exercise,²¹ often referred to in studies as PA with moderate to vigorous intensity, which excludes the patients performing light PA such as walking.^{9,11} However, 2 studies have shown that light PA also predicts less severe stroke.^{8,10} Hence, PA is an intervention known to prevent

stroke, and the results of this study further indicate that pre-stroke PA also is associated with less severe stroke.

No dose dependency for intensity was found in this study, with no significant difference in stroke severity between the light PA group (walking or similar activity for at least 4 h/wk) and the moderate PA groups (training 2-3 h/wk). Two previous studies report dose dependency for duration of PA and mild stroke severity,^{6,8} while a third shows no dose dependency for frequency.¹¹ Therefore, it is difficult to compare results between studies because frequency, intensity, and type of PA differ. However, these results presented here suggest that both light and moderate PAs are beneficial.

A majority of the patients were assessed as having a mild stroke, which could lead to motor, cognitive, or other functional deficits for the patient, even with a zero score on the NIHSS.²² Very few patients in this study had myocardial infarction or new stroke during their hospital stay; therefore, only descriptive statistics were produced for those outcomes (table 1). The length of hospital stay depends on many factors such as organization and comorbidity. Thus, regression analysis was not performed for the hospital stay outcome.

The strength of a registry-based study is the availability of previously collected variables from a large number of patients in clinical settings. Because the Swedish health care system is

Table 3 Logistic regression analyses for potential predictors for mild acute stroke severity as measured with the NIHSS

Independent variables	Nagelkerke R ²	Unstandardized coefficients B (standard error)	Odds ratio (confidence interval)	p Value
Univariate analyses (variables marked with^a included in multivariate analysis)				
PA (SGPALS)	0.04	0.83 (0.17)	2.30 (1.64-3.22)	<0.001^a
Age	0.04	-0.03 (0.01)	0.97 (0.96-0.98)	<0.001^a
Smoking	0.002	0.24 (0.26)	1.27 (0.76-2.12)	0.359
Diabetes	<0.001	0.04 (0.22)	1.04 (0.68-1.59)	0.855
Sex	0.007	0.34 (0.16)	1.40 (1.02-1.93)	0.040 ^a
Statin treatment	<0.001	-0.07 (0.20)	0.93 (0.62-1.39)	0.726
Hypertension treatment	0.008	-0.37 (0.17)	0.69 (0.49-0.96)	0.029 ^a
Multivariate analysis with PA, age, sex, and hypertension treatment				
First model: sex excluded (p = 0.37)				
Second model: hypertension treatment excluded (p = 0.40)				
Multivariate analysis: final model				
PA (SGPALS)	0.068	0.70 (0.18)	2.02 (1.43-2.86)	<0.001
Age		-0.03 (0.01)	0.97 (0.96-0.99)	<0.001

Abbreviations: NIHSS = National Institutes of Health Stroke Scale; PA = physical activity; SGPALS = Saltin-Grimby Physical Activity Level Scale.

Hosmer and Lemeshow test, p = 0.465; AUC, p = 0.647.

Physical activity (PA) measured with SGPALS = Saltin-Grimby Physical Activity Level Scale, where 1 = physically inactive, 2 = some PA (light PA) ≥ 4 h/wk, 3 = regular PA and training (moderate PA) $\geq 2-3$ h/wk, and 4 = regular hard physical training for competition sports (vigorous PA) several times/wk. Significant p values are in bold text.

freely accessible to everyone, the Swedish quality registers gather information on all patients. The overall coverage ratio in the Riksstroke register is 90%. These factors form the basis for the generalizability of the results in this study.

The general limitations of a registry-based study such as this one is missing data, often found in specific variables (compared with clinical studies), and availability of predefined variables and measurements only, thereby reducing the number of available variables. A specific limitation of this study is the potentially limited utility of retrospective self-reported questions such as the SGPALS, although several studies have shown that self-report is a reproducible and reliable way to assess the activity level.^{23–25} The SGPALS has been validated as a simple indicator of inactive behavior and cardiovascular risk.^{17,26} Recall bias, where the individual's memory and the disease status can influence the recalling process, may give unreliable data.²⁷ The self-reported assessments of PA are often used but have a larger variability compared with objective assessments. Although objective measurements are more accurate, the cost and feasibility can make the use difficult in larger populations.²⁸

Some possible explanations for the benefits of prestroke PA for stroke severity could be reduction in inflammation or increase in the level of growth factors (which stimulates neurogenesis and angiogenesis).^{29,30} Whether these associations are truly caused by PA is not fully proven, nor the possible neuroprotective mechanisms, because most of such studies are conducted on animal models involving small sample sizes and constrained study design.³¹ Thus, there is a need for further research in this area to understand the possible mechanisms by which prestroke PA influences stroke severity.

The exploration of the link between prestroke PA and post-stroke cognitive function has scope for future research. A recent study from Sweden showed an association between a high cardiovascular fitness in midlife women and decreased risk of dementia.³² Another possible research area is to investigate if and how prestroke PA has an effect on patients after stroke in a longer time perspective.

Physical inactivity should be monitored as a risk factor in clinical medical practice.³³ Regular PA has been shown to reduce the risk of several noncommunicable diseases in addition to stroke, and increased PA is considered essential for maintaining good health. This can be achieved through education and recommendations regarding PA.³⁴ However, the evidence of the neuroprotective effects of PA is conflicting, and studies with homogenous populations and standardized outcome analyses are needed.³⁵ Health care should provide PA counseling and support for increased PA among individuals with risk factors.

This study shows that prestroke PA and younger age are partially associated with less severe acute stroke. Both light PA

such as walking at least 4 h/wk and moderate PA 2–3 h/wk appear to be beneficial.

Author contributions

M. Reinholdsson: acquisition of data, analysis and interpretation of data, and drafting of the manuscript. A. Palmstam: analysis and interpretation of data, study supervision, and critical revision of the manuscript for intellectual content. K.S. Sunnerhagen: study concept and design, analysis and interpretation of data, study supervision, and critical revision of the manuscript for intellectual content.

Acknowledgment

The authors thank the members of the Riksstroke Collaboration for data from the Swedish Stroke Register, Riksstroke (riksstroke.org), and the Väststroke Collaboration for data from the Väststroke Register. They also thank the participating patients and support staff for assistance with data acquisition.

Study funding

The Local Research and Development Board for Gothenburg and Södra Bohuslän, the Renée Eanders Foundation, the Swedish Stroke Association, the Swedish Heart-Lung Foundation, the Swedish Brain Foundation, Promobilia, and the Swedish Research Council VR 2017-00946.

Disclosure

The authors report no disclosures relevant to the manuscript. Go to Neurology.org/N for full disclosures.

Publication history

Received by *Neurology* January 4, 2018. Accepted in final form July 5, 2018.

References

1. Feigin V. Global, regional, and national disability-adjusted life years (Daly's) for 315 diseases and injuries and healthy life expectancy (Hale), 1990–2015: a systematic analysis for the global burden of disease study 2015. *Lancet* 2016;388:1603–1658.
2. O'Donnell MJ, Chin SL, Rangarajan S, et al. Global and regional effects of potentially modifiable risk factors associated with acute stroke in 32 countries (INTERSTROKE): a case-control study. *Lancet* 2016;388:761–775.
3. Ding D, Lawson KD, Kolbe-Alexander TL, et al. The economic burden of physical inactivity: a global analysis of major non-communicable diseases. *Lancet* 2016;388:1311–1324.
4. Endres M, Gertz K, Lindauer U, et al. Mechanisms of stroke protection by physical activity. *Ann Neurol* 2003;54:582–590.
5. Egan KJ, Janssen H, Sena ES, et al. Exercise reduces infarct volume and facilitates neurobehavioral recovery: results from a systematic review and meta-analysis of exercise in experimental models of focal ischemia. *Neurorehabil Neural Repair* 2014;28:800–812.
6. Deplanque D, Masse I, Lefebvre C, Libersa C, Leys D, Bordet R. Prior TIA, lipid-lowering drug use, and physical activity decrease ischemic stroke severity. *Neurology* 2006;67:1403–1410.
7. Krarup LH, Truelsen T, Gluud C, et al. Prestroke physical activity is associated with severity and long-term outcome from first-ever stroke. *Neurology* 2008;71:1313–1318.
8. Ricciardi AC, Lopez-Cancio E, Perez de la Ossa N, et al. Prestroke physical activity is associated with good functional outcome and arterial recanalization after stroke due to a large vessel occlusion. *Cerebrovasc Dis* 2014;37:304–311.
9. Wen CP, Liu CH, Jeng JS, et al. Pre-stroke physical activity is associated with fewer post-stroke complications, lower mortality, and a better long-term outcome. *Eur J Neurol* 2017;24:1525–1531.
10. Ursin MH, Ihle-Hansen H, Fure B, Tveit A, Bergland A. Effects of premorbid physical activity on stroke severity and post-stroke functioning. *J Rehabil Med* 2015;47:612–617.
11. Stroud N, Mazwi TM, Case LD, et al. Prestroke physical activity and early functional status after stroke. *J Neurol Neurosurg Psychiatry* 2009;80:1019–1022.
12. Asplund K, Hulter Asberg K, Appelros P, et al. The Riks-Stroke story: building a sustainable national register for quality assessment of stroke care. *Int J Stroke* 2011;6:99–108.

13. Koster M, Asplund K, Johansson A, Stegmayr B. Refinement of Swedish administrative registers to monitor stroke events on the national level. *Neuroepidemiology* 2013;40:240–246.
14. Kasner SE. Clinical interpretation and use of stroke scales. *Lancet Neurol* 2006;5: 603–612.
15. Lindley RJ, Wardlaw JM, Whiteley WN, et al. Alteplase for acute ischemic stroke: outcomes by clinically important subgroups in the Third International Stroke Trial. *Stroke* 2015;46:746–756.
16. Saltin B, Grimby G. Physiological analysis of middle-aged and old former athletes: comparison with still active athletes of the same ages. *Circulation* 1968;38:1104–1115.
17. Rodjer L, Jonsdottir IH, Rosengren A, et al. Self-reported leisure time physical activity: a useful assessment tool in everyday health care. *BMC Public Health* 2012;12:693.
18. Bursac Z, Gauss CH, Williams DK, Hosmer DW. Purposeful selection of variables in logistic regression. *Source Code Biol Med* 2008;3:17.
19. Peduzzi P, Concato J, Kemper E, Holford TR, Feinstein AR. A simulation study of the number of events per variable in logistic regression analysis. *J Clin Epidemiol* 1996;49: 1373–1379.
20. Nagelkerke NJ. A note on a general definition of the coefficient of determination. *Biometrika* 1991;78:691–692.
21. Caspersen CJ, Powell KE, Christenson GM. Physical activity, exercise, and physical fitness: definitions and distinctions for health-related research. *Public Health Rep* 1985;100:126–131.
22. Hand B, Page SJ, White S. Stroke survivors scoring zero on the NIH stroke scale score still exhibit significant motor impairment and functional limitation. *Stroke Res Treat* 2014;2014:462681.
23. Teixeira-Salmela LF, Devaraj R, Olney SJ. Validation of the human activity profile in stroke: a comparison of observed, proxy and self-reported scores. *Disabil Rehabil* 2007;29:1518–1524.
24. Kurtze N, Rangul V, Hustvedt BE. Reliability and validity of the international physical activity questionnaire in the Nord-Trøndelag Health Study (HUNT) population of men. *BMC Med Res Methodol* 2008;8:63.
25. Kurtze N, Rangul V, Hustvedt BE, Flanders WD. Reliability and validity of self-reported physical activity in the Nord-Trøndelag Health Study (HUNT 2). *Eur J Epidemiol* 2007;22:379–387.
26. Aires N, Selmer R, Thelle D. The validity of self-reported leisure time physical activity, and its relationship to serum cholesterol, blood pressure and body mass index: a population based study of 332,182 men and women aged 40–42 years. *Eur J Epidemiol* 2003;18:479–485.
27. Hassan E. Recall bias can be a threat to retrospective and prospective research designs. *Internet J Epidemiol* 2006;3:339–412.
28. Dowd KP, Szeklicki R, Minetto MA, et al. A systematic literature review of reviews on techniques for physical activity measurement in adults: a DEDIPAC study. *Int J Behav Nutr Phys Act* 2018;15:15.
29. Wang Y, Li M, Dong F, Zhang J, Zhang F. Physical exercise-induced protection on ischemic cardiovascular and cerebrovascular diseases. *Int J Clin Exp Med* 2015;8: 19859–19866.
30. Middleton LE, Corbett D, Brooks D, et al. Physical activity in the prevention of ischemic stroke and improvement of outcomes: a narrative review. *Neurosci Biobehav Rev* 2013;37:133–137.
31. Macleod MR, McLean AL, Kyriakopoulou A, et al. Risk of bias in reports of in vivo research: a focus for improvement. *PLoS Biol* 2015;13:e1002273.
32. Horder H, Johansson L, Guo X, et al. Midlife cardiovascular fitness and dementia: a 44-year longitudinal population study in women. *Neurology* 2018;90:e1298–e1305.
33. Reis RS, Salvo D, Ogilvie D, et al. Scaling up physical activity interventions worldwide: stepping up to larger and smarter approaches to get people moving. *Lancet* 2016;388: 1337–1348.
34. World Health Organisation WHO. Global Status Report on Noncommunicable Diseases 2014 [Online]. Available at: who.int/nmh/publications/ncd-status-report-2014/en/. Accessed April 5, 2018.
35. Tumas MT, Trocoli T, de Oliveira MF, Campos RR, Botelho RV. Do physically active patients have better functional outcome after stroke? A systematic review. *J Stroke Cerebrovasc Dis* 2016;25:527–532.

Neurology®

Prestroke physical activity could influence acute stroke severity (part of PAPSIGOT)

Malin Reinholdsson, Annie Palstam and Katharina S. Sunnerhagen

Neurology 2018;91:e1461-e1467 Published Online before print September 19, 2018

DOI 10.1212/WNL.0000000000006354

This information is current as of September 19, 2018

Updated Information & Services	including high resolution figures, can be found at: http://n.neurology.org/content/91/16/e1461.full
References	This article cites 34 articles, 6 of which you can access for free at: http://n.neurology.org/content/91/16/e1461.full#ref-list-1
Citations	This article has been cited by 4 HighWire-hosted articles: http://n.neurology.org/content/91/16/e1461.full##otherarticles
Subspecialty Collections	This article, along with others on similar topics, appears in the following collection(s): All Cerebrovascular disease/Stroke http://n.neurology.org/cgi/collection/all_cerebrovascular_disease_stroke All Rehabilitation http://n.neurology.org/cgi/collection/all_rehabilitation Natural history studies (prognosis) http://n.neurology.org/cgi/collection/natural_history_studies_prognosis
Permissions & Licensing	Information about reproducing this article in parts (figures, tables) or in its entirety can be found online at: http://www.neurology.org/about/about_the_journal#permissions
Reprints	Information about ordering reprints can be found online: http://n.neurology.org/subscribers/advertise

Neurology® is the official journal of the American Academy of Neurology. Published continuously since 1951, it is now a weekly with 48 issues per year. Copyright © 2018 The Author(s). Published by Wolters Kluwer Health, Inc. on behalf of the American Academy of Neurology. All rights reserved. Print ISSN: 0028-3878. Online ISSN: 1526-632X.

