

Robert A. Gross, MD, PhD, FAAN, Editor-in-Chief, *Neurology*[®]



Notable in *Neurology* This week

This issue features an article that reports plasma fibrillin-1 as a promising biomarker for the diagnosis of acute spontaneous cerebral artery dissection, with potential value in grading lesion severity and predicting radiographic prognosis; another defines the risk of major congenital malformations due to specific antenatal antiepileptic drug exposure and dosage. A featured article describes the lack of association between mandatory physician reporting laws and prevalence of dementia among patients hospitalized due to vehicle crashes.

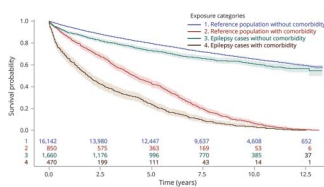
Articles

Prescription of antihypertensive medication at discharge influences survival following stroke

In this study, risk of death from cardiovascular disease following stroke or TIA and the influence of antihypertensive medication was investigated. Antihypertensive medication prescription was associated with reductions in hazard of cardiovascular death and all-cause death within 180 days. It is important to start secondary prevention medication for patients with stroke in hospital.

Page 407

Risk for injuries and accidents in epilepsy: A prospective population-based cohort study



In epilepsy, some comorbidities have major influences on risk of accidents or injuries due to the interaction with epilepsy. The influence of certain comorbidities should be accounted for when counseling patients with epilepsy about disease-related risks, especially during the first 2 years of seizure onset, when the risk is highest.

Page 411

Efficacy of Balance and Eye-movement Exercises for Persons with Multiple Sclerosis

Impaired balance and fatigue are common in multiple sclerosis (MS), but treatment is limited. In a 2-arm randomized controlled trial, patients with MS participated in a multifaceted exercise program (balance and eye movement exercises for persons with multiple sclerosis [BEEMS]) and improved in balance, fatigue, and dizziness whether or not brainstem/cerebellar lesions were present. This supports generalizability of BEEMS.

Page 413

From editorialists Bennett and Leavitt: "The authors are to be commended for this extensive investigation of postural instability in MS and the demonstrated effects of the BEEMS training program on balance, dizziness, and fatigue."

Page 403

MORE ONLINE

🎧 Editor's Summary

Audio summary of highlighted articles.

NPub.org/edsum

Continued

Contemporary Issues

An interdisciplinary response to contemporary concerns about brain death determination

Controversy persists in determination of brain death by neurologic criteria. An interdisciplinary summit hosted by the American Academy of Neurology met to discuss public distrust of brain death and reaffirm validity of neurologic criteria. While the legitimacy of determination of death by neurologic criteria has been questioned, stakeholders are working to improve public trust.

Page 423

NB: "Paraneoplastic cerebral vasculitis: Rare cause of spontaneous convexity subarachnoid hemorrhage," p. e815. To check out other Resident & Fellow Pearls & Oysters, point your browser to Neurology.org/N and click on the link to the Resident & Fellow Section. At the end of the issue, check out the Resident & Fellow Mystery Case discussing a case of intermittent vertical diplopia presenting with superior oblique myokymia. This week also includes a mixed-medium Visions titled "The unseen but felt."

NEW EPISODE



February 27, 2018

CME Opportunity:

Listen to this week's *Neurology*® Podcast and earn 0.5 AMA PRA Category 1 CME Credits™ by answering the multiple-choice questions in the online Podcast quiz.

An interdisciplinary response to contemporary concerns about brain death determination (see p. 423)

1. Featured Article: An interdisciplinary response to contemporary concerns about brain death determination
2. What's Trending: Gene Drive – part 2

This podcast begins and closes with Dr. Robert Gross, Editor-in-Chief, briefly discussing highlighted articles from the February 27, 2018, issue of *Neurology*. In the first segment, Dr. Andy Schomer talks with Dr. Ariane Lewis about her paper on the determination of brain death. In the second part of the podcast, Dr. Ted Burns speaks with Dr. Kevin Esvelt for part two of the discussion on gene drives (the first of these segments aired in the February 20, 2018, episode).

Disclosures can be found at Neurology.org/Podcast.

At Neurology.org, click on "RSS" in the Neurology Podcast box to listen to the most recent podcast and subscribe to the RSS feed.

Neurology®

Spotlight on the February 27 issue

Robert A. Gross

Neurology 2018;90;397-398

DOI 10.1212/WNL.0000000000005011

This information is current as of February 26, 2018

Updated Information & Services

including high resolution figures, can be found at:
<http://n.neurology.org/content/90/9/397.full>

Permissions & Licensing

Information about reproducing this article in parts (figures, tables) or in its entirety can be found online at:
http://www.neurology.org/about/about_the_journal#permissions

Reprints

Information about ordering reprints can be found online:
<http://n.neurology.org/subscribers/advertise>

Neurology® is the official journal of the American Academy of Neurology. Published continuously since 1951, it is now a weekly with 48 issues per year. Copyright © 2018 American Academy of Neurology. All rights reserved. Print ISSN: 0028-3878. Online ISSN: 1526-632X.

