

Select figures listed on the Table of Contents only appear within the full-length articles online.

In Focus

- 579 **Spotlight on the March 27 issue**
- 580 **This Week's *Neurology*® Podcast**

Editorials

- 581 **No handshake agreement on postural tremor subtypes in Parkinson disease?**
A. Hassan
- 583 **Epilepsy and transportation: Moving through the confusion**
A. Krumholz and A.T. Berg
- 585 **The promise of noninvasive cerebral hemodynamic assessment in sickle cell anemia**
H. Stotesbury, P.W. Hales, and F.J. Kirkham

Articles: Short Format

Full articles at Neurology.org/N

- 587 **The nature of postural tremor in Parkinson disease**
M.F. Dirks, H. Zach, B.R. Bloem, M. Hallett, and R.C. Helmich
[↪ Editorial, p. 581](#)
- 588 **Attention-deficit/hyperactivity disorder medication and seizures**
K.K. Wiggs, Z. Chang, P.D. Quinn, K. Hur, R. Gibbons, D. Dunn, I. Brikell, H. Larsson, and B.M. D'Onofrio
[↪ CME Course](#)
- 589 **Comment: Has the relationship between ADHD medications and seizures been settled?**
J.W. Miller
- 590 **Epilepsy, antiepileptic drugs, and serious transport accidents: A nationwide cohort study**
H.E.K. Sundelin, Z. Chang, H. Larsson, P. Lichtenstein, C. Almqvist, T. Tomson, and J.F. Ludvigsson
[↪ Editorial, p. 583](#) [↪ Patient Page](#)
- 591 **High-frequency oscillations in awake patients undergoing brain tumor-related epilepsy surgery**
A.M. Feyissa, G.A. Worrell, W.O. Tatum, D. Mahato, B.H. Brinkmann, S.S. Rosenfeld, K. ReFaey, P.S. Bechtle, and A. Quinones-Hinojosa
- 592 **Association between implementation of a code stroke system and poststroke epilepsy**
Z. Chen, L. Churilov, Z. Chen, J. Naylor, M. Koome, B. Yan, and P. Kwan
[↪ Class of Evidence](#)
- 593 **Regional oxygen extraction predicts border zone vulnerability to stroke in sickle cell disease**
M.E. Fields, K.P. Williams, D.K. Ragan, M.M. Binkley, C. Eldeniz, Y. Chen, M.L. Hulbert, R.C. McKinstry, J.S. Shimony, K.D. Vo, A. Doctor, H. An, A.L. Ford, and J.-M. Lee
[↪ Editorial, p. 585](#)
- 594 **Comparing intracerebral hemorrhages associated with direct oral anticoagulants or warfarin**
R. Kurogi, K. Nishimura, M. Nakai, A. Kada, S. Kamitani, J. Nakagawara, K. Toyoda, K. Ogasawara, J. Ono, Y. Shiokawa, T. Aruga, S. Miyachi, I. Nagata, S. Matsuda, S. Yoshimura, K. Okuchi, A. Suzuki, F. Nakamura, D. Onozuka, K. Ido, A. Kurogi, N. Mukae, A. Nishimura, K. Arimura, T. Kitazono, A. Hagihara, and K. Iihara, J-ASPECT Study Collaborators
[Open Access Article](#)
- 595 **Midlife insulin resistance, APOE genotype, and late-life brain amyloid accumulation**
L.L. Ekblad, J. Johansson, S. Helin, M. Viitanen, H. Laine, P. Puukka, A. Jula, and J.O. Rinne
[↪ CME Course](#) [Open Access Article](#)

↪ Ahead of Print Articles and Editorials

NPub.org/aheadofprint

Continued

- 596 **Retinal signs and 20-year cognitive decline in the Atherosclerosis Risk in Communities Study**
J.A. Deal, A.R. Sharrett, A.M. Rawlings, R.F. Gottesman, K. Bandeen-Roche, M. Albert, D. Knopman, E. Selvin, B.A. Wasserman, B. Klein, and R. Klein
- 597 **Moderating effect of APOE ε4 on the relationship between sleep-wake cycle and brain β-amyloid**
J.Y. Hwang, M.S. Byun, Y.M. Choe, J.H. Lee, D. Yi, J.-W. Choi, S.H. Hwang, Y.J. Lee, and D.Y. Lee, For the KBASE Research Group

What's Happening

- 598 **What's happening in *Neurology*[®]**
- 599 **What's happening in *Neurology*[®] Clinical Practice**
- 600 **What's happening in *Neurology*[®] Genetics**
- 601 **What's happening in *Neurology*[®] Neuroimmunology & Neuroinflammation**

Views & Reviews

- 602 **Recent advances in head impulse test findings in central vestibular disorders**
J.-Y. Choi, H.-J. Kim, and J.-S. Kim
[Video](#)

Clinical/Scientific Notes

- 613 **Stem cell injection-induced glioneuronal lesion of the cauda equina**
B.S. Lee, R.L. Achey, G.A. Yeane, D.S. Bosler, Z. Aly, D. Ontaneda, J. Morren, and E.C. Benzel

Reflections: Neurology and the Humanities

- 616 **The circus of life**
M.V. Vyas
[Audio](#)

NeuroImages

- 618 **Dilation lag in Horner syndrome can be measured with a diagnostic imaging system**
F. Pellegrini, G. Capello, and R. Napoleone

Resident & Fellow Section

- 619 **Resident & Fellow Rounds**
J.J. Millichap and R.E. Strowd III
- e1174 **Mystery Case: Tortuous hairs and tortuous blood vessels**
I.K. Sharawat, R. Suthar, S. Vyas, A. Rawat, and N. Sankhyan
- 622 **Child Neurology: Type 1 sialidosis due to a novel mutation in NEU1 gene**
A. Aravindhan, A. Veerapandian, C. Earley, V. Thulasi, C. Kresge, and J. Kornitzer
- e1177 **Teaching NeuroImages: Sulcal artery syndrome: A hemicord infarct presenting with incomplete Brown-Sequard syndrome**
J.M.N. Fong, G.J. Ng, and N.C.K. Tan
- e1179 **Teaching Video NeuroImages: Vaguglossopharyngeal neuralgia mimicking a seizure**
A.J. Chalissery, M. Gaughan, G. Houghton, G. Mullins, and N. Delanty
[Video](#)

Patient Page

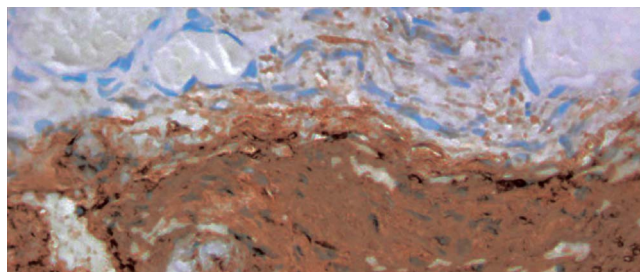
- e1180 **Epilepsy, antiepilepsy drugs, and serious car crashes**
J. Drazkowski

Disputes & Debates: Editors' Choice

- 625 **Editors' note: Sex-specific stroke incidence over time in the Greater Cincinnati/Northern Kentucky Stroke Study**
C. Karam and S. Galetta
- 625 **Reader response: Sex-specific stroke incidence over time in the Greater Cincinnati/Northern Kentucky Stroke Study**
L.H. Kuller
- 626 **Reader response: Sex-specific stroke incidence over time in the Greater Cincinnati/Northern Kentucky Stroke Study**
M. Zedde, F.R. Pezzella, Z. Gdovinova, C. Kremer, and V. Caso
- 626 **Author response: Sex-specific stroke incidence over time in the Greater Cincinnati/Northern Kentucky Stroke Study**
T.E. Madsen, J. Khoury, H. Sucharew, and D. Kleindorfer
- 627 **Editors' note: Expression of Concern: Does compensatory hyperparathyroidism predispose to ischemic stroke? Decreased bone mass and increased bone turnover with valproate therapy in adults with epilepsy; An alternative to vitamin D supplementation to prevent fractures in patients with MS; High prevalence of vitamin D deficiency and reduced bone mass in Parkinson's disease**
C. Karam and S. Galetta
- 627 **Reader response: Expression of Concern: Does compensatory hyperparathyroidism predispose to ischemic stroke? Decreased bone mass and increased bone turnover with valproate therapy in adults with epilepsy; An alternative to vitamin D supplementation to prevent fractures in patients with MS; High prevalence of vitamin D deficiency and reduced bone mass in Parkinson's disease**
M.J. Bolland, A. Avenell, G. Gamble, and A. Grey

Department

In the Next Issue of *Neurology*[®]



[Cover image](#)

Immunohistochemistry of a lesion biopsied from a lumbar nerve root in a patient with induced glioneuronal lesion of the cauda equina. Colorized by Cindy Abair, *Neurology* Senior Graphics Editor.

[See page 613](#)

Neurology®

90 (13)

Neurology 2018;90:e1158-628

This information is current as of January 1, 2018

Updated Information & Services

including high resolution figures, can be found at:
<http://n.neurology.org/content/90/13.full>

Permissions & Licensing

Information about reproducing this article in parts (figures, tables) or in its entirety can be found online at:
http://www.neurology.org/about/about_the_journal#permissions

Reprints

Information about ordering reprints can be found online:
<http://n.neurology.org/subscribers/advertise>

Neurology® is the official journal of the American Academy of Neurology. Published continuously since 1951, it is now a weekly with 48 issues per year. Copyright . All rights reserved. Print ISSN: 0028-3878. Online ISSN: 1526-632X.

