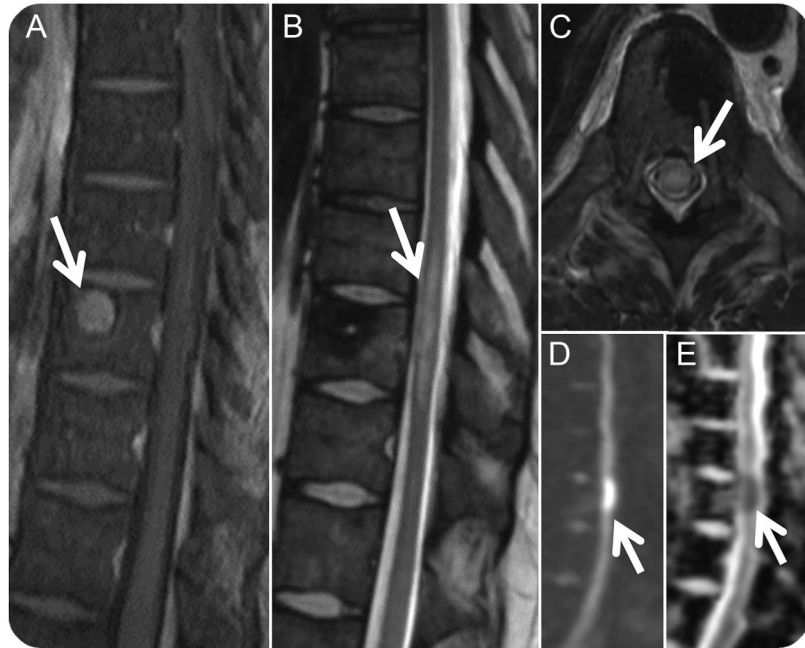


# Frozen cord

**Figure 1** Pre- and immediate postcryoablation



(A) Pretreatment sagittal postgadolinium T1-weighted image demonstrating an enhancing T10 vertebral body lesion (arrow). (B-E) Immediate posttreatment sagittal and axial T2-weighted images, diffusion-weighted image, and apparent diffusion coefficient map demonstrating edema in the cord (arrows, B and C) with restricted diffusion (arrows, D and E) indicating cytotoxic edema.

A 30-year-old man with Ewing sarcoma presented with an enlarging metastatic osseous lesion involving the T10 vertebral body. Percutaneous cryoablation was performed under CT guidance for local tumor control; immediately following, he developed paraplegia. Early and delayed cord imaging show cryoablation-related injury (figures 1 and 2). The procedure involves targeted freezing of tissue to approximately  $-40^{\circ}\text{C}$  and is usually safe for lesions involving the anterior vertebral body distant from the cord.<sup>1,2</sup> Distant thermal effects with a temperature as low as  $0^{\circ}\text{C}$  can occur, however, up to 5 cm from the site of treatment.

*Saad Ali, MD*

From the Department of Radiology, Section of Neuroradiology, University of Chicago Medical Center, IL.

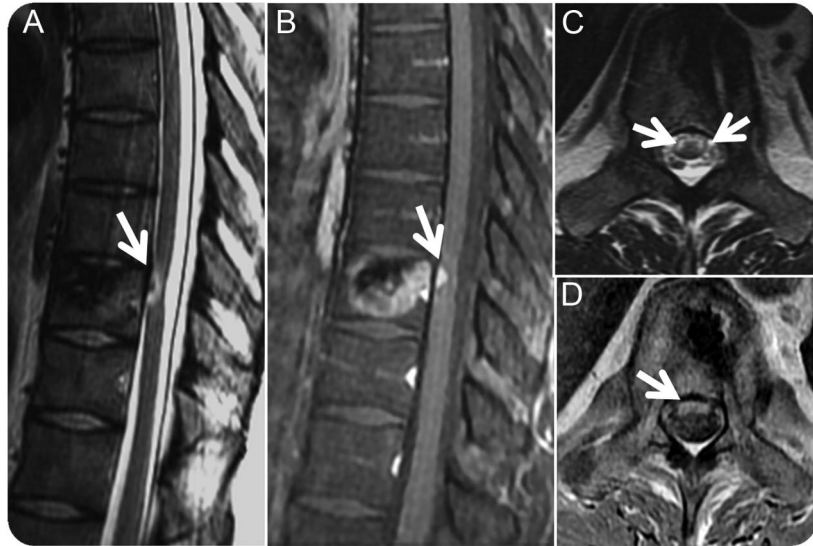
*Study funding:* No targeted funding reported.

*Disclosure:* The author reports no disclosures relevant to the manuscript. Go to Neurology.org for full disclosures.

*Correspondence to Dr. Ali:* [sali@radiology.bsd.uchicago.edu](mailto:sali@radiology.bsd.uchicago.edu)

1. Callstrom MR, Dupuy DE, Solomon SB, et al. Percutaneous image-guided cryoablation of painful metastases involving bone: multicenter trial. *Cancer* 2013;119:1033–1041.
2. Munk PL, Murphy KJ, Gangi A, Liu DM. Fire and ice: percutaneous ablative therapies and cement injection in management of metastatic disease of the spine. *Semin Musculoskelet Radiol* 2011;15:125–134.

**Figure 2** Late follow-up postcryoablation



(A-E) Three-month posttreatment sagittal T2 and postgadolinium T1-weighted images and axial T2 and postgadolinium T1-weighted images: T2 hyperintensity and enhancement are seen in the ventral thoracic cord at the level of the ablation (arrows, B-D). Cord appears tethered to the dura ventrally due to scarring (arrow, A).

## Get Connected. Stay Connected.

Connect with the American Academy of Neurology's popular social media channels to stay up-to-date on the latest news and breakthroughs in neurology, and network with peers and neurology thought leaders. Visit [AAN.com/Connect](http://AAN.com/Connect).

## Neurology® Genetics Call For Papers



*Neurology: Genetics* is an open access, online only journal that provides neurologists with outstanding original contributions that elucidate the role of genetic and epigenetic variation in diseases and biological traits of the central and peripheral nervous system. We welcome all submissions. For more information on how to submit, visit <http://www.neurology.org/site/gen/gen2.xhtml>.

# Neurology®

## Frozen cord

Saad Ali

*Neurology* 2016;86;106-107

DOI 10.1212/WNL.0000000000002243

**This information is current as of December 28, 2015**

<b>Updated Information &amp; Services</b>	including high resolution figures, can be found at: <a href="http://n.neurology.org/content/86/1/106.full">http://n.neurology.org/content/86/1/106.full</a>
<b>References</b>	This article cites 2 articles, 0 of which you can access for free at: <a href="http://n.neurology.org/content/86/1/106.full#ref-list-1">http://n.neurology.org/content/86/1/106.full#ref-list-1</a>
<b>Subspecialty Collections</b>	This article, along with others on similar topics, appears in the following collection(s): <b>Spinal cord infarction</b> <a href="http://n.neurology.org/cgi/collection/spinal_cord_infarction">http://n.neurology.org/cgi/collection/spinal_cord_infarction</a> <b>Spinal cord trauma; see Trauma/spinal cord trauma</b> <a href="http://n.neurology.org/cgi/collection/spinal_cord_trauma-see_trauma-spinal_cord_trauma">http://n.neurology.org/cgi/collection/spinal_cord_trauma-see_trauma-spinal_cord_trauma</a>
<b>Permissions &amp; Licensing</b>	Information about reproducing this article in parts (figures, tables) or in its entirety can be found online at: <a href="http://www.neurology.org/about/about_the_journal#permissions">http://www.neurology.org/about/about_the_journal#permissions</a>
<b>Reprints</b>	Information about ordering reprints can be found online: <a href="http://n.neurology.org/subscribers/advertise">http://n.neurology.org/subscribers/advertise</a>

*Neurology*® is the official journal of the American Academy of Neurology. Published continuously since 1951, it is now a weekly with 48 issues per year. Copyright © 2015 American Academy of Neurology. All rights reserved. Print ISSN: 0028-3878. Online ISSN: 1526-632X.

