

Neurology[®]

Table of Contents

Volume 85, Number 17, October 27, 2015

Neurology.org

THE MOST WIDELY READ AND HIGHLY CITED PEER-REVIEWED
NEUROLOGY JOURNAL





IN FOCUS



- 1435 Spotlight on the October 27 Issue
- 1451 This Week's *Neurology*[®] Podcast

EDITORIALS



- 1436 Migraine and cryptogenic stroke: The clot thickens
G.E. Tietjen and T. Rundek
- 1438 A call for new attitudes on infection, vaccination, and childhood stroke
J. Biller and G.L. Heyer
- 1440 How epileptogenic are temporal encephaloceles?
J.J. Van Gompel and J.W. Miller
- 1442 Blowing the whistle on sports concussions: Will the risk of dementia change the game?
B.L. Edlow and H.E. Hinson

ARTICLES

- 1444 Age-specific association of migraine with cryptogenic TIA and stroke: Population-based study
L. Li, U.G. Schulz, W. Kuker, and P.M. Rothwell, on behalf of the Oxford Vascular Study
Editorial, p. 1436
- 1452 Systemic thrombolysis in acute ischemic stroke patients with unruptured intracranial aneurysms
N. Goyal, G. Tsivgoulis, R. Zand, V.K. Sharma, K. Barlinn, S. Male, A.H. Katsanos, U. Bodechtel, S. Iftikhar, A. Arthur, L. Eljovich, A.W. Alexandrov, and A.V. Alexandrov
- 1459 Infection, vaccination, and childhood arterial ischemic stroke: Results of the VIPS study
H.J. Fullerton, N.K. Hills, M.S.V. Elkind, M.M. Dowling, M. Wintermark, C.A. Glaser, M. Tan, M.J. Rivkin, L. Titomanlio, A.J. Barkovich, and G.A. deVeber, on behalf of the VIPS Investigators
  **Editorial, p. 1438**

- 1467 Temporal anteroinferior encephalocele: An underrecognized etiology of temporal lobe epilepsy?
T. Saavalainen, L. Jutila, E. Mervaala, R. Kälviäinen, R. Vanninen, and A. Immonen
  **Editorial, p. 1440**
- 1475 Effect of invasive EEG monitoring on cognitive outcome after left temporal lobe epilepsy surgery
R.M. Busch, T.E. Love, L.E. Jehi, L. Ferguson, R. Yardi, I. Najm, W. Bingaman, and J. Gonzalez-Martinez
- 1482 Prospective and longitudinal long-term employment outcomes after resective epilepsy surgery
A. Edelvik, R. Flink, and K. Malmgren
OPEN
- 1491 Structural MRI substrates of cognitive impairment in neuromyelitis optica
Y. Liu, Y. Fu, M.M. Schoonheim, N. Zhang, M. Fan, L. Su, Y. Shen, Y. Yan, L. Yang, Q. Wang, N. Zhang, C. Yu, F. Barkhof, and F.-D. Shi
- 1500 New von Hippel-Lindau manifestations develop at the same or decreased rates in pregnancy
M.L.M. Binderup, E. Budtz-Jørgensen, and M.L. Bisgaard

VIEWS & REVIEWS

- 1504 Chronic traumatic encephalopathy and athletes
W. Meehan III, R. Mannix, R. Zafonte, and A. Pascual-Leone
  **Editorial, p. 1442**
- 1512 Delivery of epilepsy care to adults with intellectual and developmental disabilities
O. Devinsky, M. Asato, P. Camfield, E. Geller, A.M. Kanner, S. Keller, M. Kerr, E.H. Kossoff, H. Lau, S. Kothare, B.K. Singh, and E. Wirrell
- 1519 Comment: Improving the care of people with epilepsy and intellectual disabilities
J.W. Sander

CONTINUED

Neurology[®]

Table of Contents

continued



CLINICAL/SCIENTIFIC NOTES

- 1522 Autopsy case of severe generalized dystonia and static ataxia with marked cerebellar atrophy
R. Miyamoto, H. Sumikura, T. Takeuchi, M. Sanada, K. Fujita, T. Kawarai, H. Mure, R. Morigaki, S. Goto, S. Murayama, Y. Izumi, and R. Kaji



REFLECTIONS: NEUROLOGY AND THE HUMANITIES

- e129 Todd's paralysis
A.A. Tarsha

RESIDENT & FELLOW SECTION

- e130 Mystery Case: Lafora periodic acid-Schiff inclusion bodies
I.d.A. Franco, E.T.d. Rocha, H.A.C.d. Resende, N.M.d.S. Guércio, M.P. Pinto, L.A. Pires, and T.C. Vale
- e132 Teaching NeuroImages: MRI findings in X-linked adrenoleukodystrophy
K.A. Myers, J.M. Rho, and X.-C. Wei

PATIENT PAGE

- e134 Infection, vaccination, and childhood arterial ischemic stroke
D. Woo

WRITECLICK[®] EDITOR'S CHOICE

- 1525 Evidence-based guideline: Management of an unprovoked first seizure in adults: Report of the Guideline Development Subcommittee of the American Academy of Neurology and the American Epilepsy Society
N.K. Sethi, S. Lattanzi, C. Cagnetti, M. Silvestrini; Author Response: A. Krumholz, S. Shinnar, J. French, S. Wiebe, D. Gloss
- 1526 Evidence-based guideline: Management of an unprovoked first seizure in adults: Report of the Guideline Development Subcommittee of the American Academy of Neurology and the American Epilepsy Society
A. Krumholz, S. Shinnar, J. French, G. Gronseth, S. Wiebe; Commentary Author Response: A.J. Cole, G.D. Cascino

DEPARTMENT

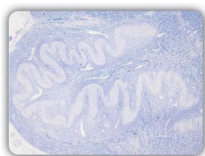
In the Next Issue of *Neurology*[®]

Podcast at Neurology.org CME Video Patient Page LOE classification LOE recommendation



Find us on Facebook

tinyurl.com/neurologyfan twitter.com/GreenJournal



Cover image: The inferior olive with Klüver-Barrera staining in a patient with predominant dystonia with marked cerebellar atrophy. See page 1522.

Look for **Publish Ahead of Print** articles and editorials under the Ahead of Print tab at Neurology.org

Neurology[®]

85 (17)

Neurology 2015;85:e129-1527

This information is current as of January 1, 2015

Updated Information & Services

including high resolution figures, can be found at:
<http://n.neurology.org/content/85/17.full>

Permissions & Licensing

Information about reproducing this article in parts (figures, tables) or in its entirety can be found online at:
http://www.neurology.org/about/about_the_journal#permissions

Reprints

Information about ordering reprints can be found online:
<http://n.neurology.org/subscribers/advertise>

Neurology® is the official journal of the American Academy of Neurology. Published continuously since 1951, it is now a weekly with 48 issues per year. Copyright . All rights reserved. Print ISSN: 0028-3878. Online ISSN: 1526-632X.

