

# Neurology<sup>®</sup>

## Table of Contents

Volume 84, Number 9, March 3, 2015

Neurology.org

THE MOST WIDELY READ AND HIGHLY CITED PEER-REVIEWED  
NEUROLOGY JOURNAL



### IN FOCUS


- 863 Spotlight on the March 3 Issue
- 943 This Week's *Neurology*<sup>®</sup> Podcast

### EDITORIALS

- 864 Multiple sclerosis, immunomodulation, and immunizations: Balancing the benefits  
*M.D. Goldman and R.T. Naismith*
- 866 GBA mutations and Parkinson disease: When genotype meets phenotype  
*S.W. Scholz and B.S. Jeon*
- 868 Continued risk of SAH after negative screen in first-degree relatives—and persistent questions  
*J.J. Majersik and R.H. Schmidt*
- 870 Unlocking the mysteries of TDP-43  
*K.A. Josephs and P.T. Nelson*

### ARTICLES

- 872 Randomized trial of vaccination in fingolimod-treated patients with multiple sclerosis  
*L. Kappos, M. Mehling, R. Arroyo, G. Izquierdo, K. Selmaj, V. Curovic-Perisic, A. Keil, M. Bijarnia, A. Singh, and P. von Rosenstiel*  
 **Editorial, p. 864**
- 880 Differential effects of severe vs mild GBA mutations on Parkinson disease  
*Z. Gan-Or, I. Amshalom, L.L. Kilarski, A. Bar-Shira, M. Gana-Weisz, A. Mirelman, K. Marder, S. Bressman, N. Giladi, and A. Orr-Urtreger*  
**Editorial, p. 866**
- 888 Parkinson disease with REM sleep behavior disorder: Features,  $\alpha$ -synuclein, and inflammation  
*Y. Hu, S.-Y. Yu, L.-J. Zuo, C.-J. Cao, F. Wang, Z.-J. Chen, Y. Du, T.-H. Lian, Y.-J. Wang, P. Chan, S.-D. Chen, X.-M. Wang, and W. Zhang*
- 895 Short- and long-term outcome of chronic pallidal neurostimulation in monogenic isolated dystonia  
*N. Brüggemann, A. Kühn, S.A. Schneider, C. Kamm, A. Wolters, P. Krause, E. Moro, F. Steigerwald, M. Wittstock, V. Tronnier, A.M. Lozano, C. Hamani, Y.-Y. Poon, S. Zittel, T. Wächter, G. Deuschl, R. Krüger, A. Kupsch, A. Münchau, K. Lohmann, J. Volkmann, and C. Klein*  


- 904 Prevalence of congenital muscular dystrophy in Italy: A population study  
*A. Graziano, F. Bianco, A. D'Amico, I. Moroni, S. Messina, C. Bruno, E. Pegorara, M. Mora, G. Astrea, F. Magri, G.P. Comi, A. Berardinelli, M. Maggio, L. Morandi, A. Pini, R. Petillo, G. Tasca, M. Monforte, C. Minetti, T. Mongini, E. Ricci, K. Gorni, R. Battini, M. Villanova, L. Politano, F. Gualandi, A. Ferlini, F. Muntoni, F.M. Santorelli, E. Bertini, M. Pane, and E. Mercuri*
- 912 Long-term risk of aneurysmal subarachnoid hemorrhage after a negative aneurysm screen  
*I. Rasing, Y.M. Ruigrok, P. Greebe, B.K. Velthuis, T.D. Witkamp, M.J.H. Wermer, Y.B. Roos, W.P. Vandertop, and G.J.E. Rinkel*  
 **Editorial, p. 868**
- 918 Common variation in COL4A1/COL4A2 is associated with sporadic cerebral small vessel disease  
*K. Rannikmäe, G. Davies, P.A. Thomson, S. Bevan, W.J. Devan, G.J. Falcone, M. Traylor, C.D. Anderson, T.W.K. Battey, F. Radmanesh, R. DeKa, J.G. Woo, L.J. Martin, J. Jimenez-Conde, M. Selim, D.L. Brown, S.L. Silliman, C.S. Kidwell, J. Montaner, C.D. Langefeld, A. Slowik, B.M. Hansen, A.G. Lindgren, J.F. Meschia, M. Fornage, J.C. Bis, S. Debette, M.A. Ikram, W.T. Longstreth, R. Schmidt, C.R. Zhang, Q. Yang, P. Sharma, S.J. Kittner, B.D. Mitchell, E.G. Holliday, C.R. Levi, J. Attia, P.M. Rothwell, D.L. Poole, G.B. Boncoraglio, B.M. Psaty, R. Malik, N. Rost, B.B. Worrall, M. Dichgans, T. Van Agtmael, D. Woo, H.S. Markus, S. Seshadri, J. Rosand, and C.L.M. Sudlow, on behalf of the METASTROKE Consortium, the CHARGE WMH Group, the ISGC ICH GWAS Study Collaboration, the WMH in Ischemic Stroke GWAS Study Collaboration, and the International Stroke Genetics Consortium*
- 927 The TMEM106B locus and TDP-43 pathology in older persons without FTL D  
*L. Yu, P.L. De Jager, J. Yang, J.Q. Trojanowski, D.A. Bennett, and J.A. Schneider*  
**Editorial, p. 870**
- 935 Neuropsychiatric symptoms, APOE  $\epsilon$ 4, and the risk of incident dementia: A population-based study  
*A. Pink, G.B. Stokin, M.M. Bartley, R.O. Roberts, O. Sochor, M.M. Machulda, J. Krell-Roesch, D.S. Knopman, J.I. Acosta, T.J. Christianson, V.S. Pankratz, M.M. Mielke, R.C. Petersen, and Y.E. Geda*

CONTINUED

# Neurology<sup>®</sup>

## Table of Contents

*continued*



- 944 Antiepileptic drug use by pregnant women enrolled in Florida Medicaid  
*X. Wen, K.J. Meador, and A. Hartzema*
- 950 Comment: Are we filling knowledge gaps about antiepileptic drugs and pregnancy?  
*N. Jette*
- 951 CHD2 myoclonic encephalopathy is frequently associated with self-induced seizures  
*R.H. Thomas, L.M. Zhang, G.L. Carvill, J.S. Archer, S.B. Heavin, S.A. Mandelstam, D. Craiu, S.F. Berkovic, D.S. Gill, H.C. Mefford, and I.E. Scheffer, on behalf of EuroEPINOMICS RES Consortium*

### VIDEO NEUROIMAGES

- 959 Bedtime-related jerks in the upper limbs associated with restless arms syndrome  
*E. Ruppert, C. Tranchant, U. Kilic-Huck, N. Carpentier, M. Bataillard, and P. Bourgin*
- 960 Fatty acid 2-hydroxylase deficiency: Clinical features and brain iron accumulation  
*J.L. Pedroso, B.W. Handfas, A. Abrahão, F. Kok, O.G.P. Barsottini, and A.S.B. Oliveira*

### RESIDENT & FELLOW SECTION

- e60 Clinical Reasoning: A 35-year-old man with 2 episodes of meningoenzephalitis associated with flu-like illnesses  
*A.J. Amin and S.L. Lewis*

- e65 Teaching *NeuroImages*: Unilateral agenesis of internal carotid artery with ophthalmic artery from opposite side  
*W.-Z. Zhou, L.-B. Zhao, S. Liu, and H.-B. Shi*
- e67 Teaching *NeuroImages*: Idiopathic hypertrophic spinal pachymeningitis mimicking epidural lymphoma  
*H.-T. Hsu, S.-S. Hsu, C.-C. Chien, and P.-H. Lai*

### WRITECLICK<sup>®</sup> EDITOR'S CHOICE

- 962 Prehospital stroke scales in urban environments: A systematic review  
*M.P. Rudd, C.I. Price, G.A. Ford; Author Response: E.S. Brandler*
- 962 Peripheral pulse measurement after ischemic stroke: A feasibility study  
*A. Totah; Author Response: B. Kallmünzer, M. Köhrmann*
- 963 Defining the clinical course of multiple sclerosis: The 2013 revisions  
*F.H. Jacques; Author Response: F.D. Lublin*

### CORRECTION

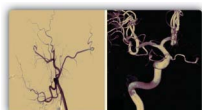
- 963 Physical activity attenuates age-related biomarker alterations in preclinical AD

### DEPARTMENT

In the Next Issue of *Neurology*<sup>®</sup>

Podcast at [Neurology.org](http://Neurology.org) CME Video Patient Page LOE classification LOE recommendation

Find us on Facebook [tinyurl.com/neurologyfan](https://www.facebook.com/Neurologyfan) twitter [twitter.com/GreenJournal](https://twitter.com/GreenJournal)



**Cover image:** Unilateral agenesis of internal carotid artery and ophthalmic artery from contralateral side. Stylized by Cindy Abair, *Neurology* Senior Graphics Editor. See page e65.

Look for **Publish Ahead of Print** articles and editorials under the Ahead of Print tab at [Neurology.org](http://Neurology.org)

# Neurology<sup>®</sup>

84 (9)

*Neurology* 2015;84:e60-963

**This information is current as of January 1, 2015**

**Updated Information & Services**

including high resolution figures, can be found at:  
<http://n.neurology.org/content/84/9.full>

**Permissions & Licensing**

Information about reproducing this article in parts (figures, tables) or in its entirety can be found online at:  
[http://www.neurology.org/about/about\\_the\\_journal#permissions](http://www.neurology.org/about/about_the_journal#permissions)

**Reprints**

Information about ordering reprints can be found online:  
<http://n.neurology.org/subscribers/advertise>

*Neurology*® is the official journal of the American Academy of Neurology. Published continuously since 1951, it is now a weekly with 48 issues per year. Copyright . All rights reserved. Print ISSN: 0028-3878. Online ISSN: 1526-632X.

