

# Neurology<sup>®</sup>

## Table of Contents

Volume 83, Number 21, November 18, 2014  
Neurology.org

THE MOST WIDELY READ AND HIGHLY CITED PEER-REVIEWED  
NEUROLOGY JOURNAL



### IN FOCUS

- 1881 Spotlight on the November 18 Issue  
1977 This Week's Neurology<sup>®</sup> Podcast

### EDITORIALS

- 1882 The toll (like receptor 3) to the pathogenesis of herpes simplex encephalitis  
*I. Steiner and K.L. Tyler*
- 1884 Little folks, little myelin, and little teeth  
*M.A. Willemsen and S. D'Arrigo*
- 1886 Mortality in epilepsy: Questions beyond death  
*P. Kwan and D. Dlugos*

### ARTICLES

- 1888 TLR3 deficiency in herpes simplex encephalitis: High allelic heterogeneity and recurrence risk  
*H.K. Lim, M. Seppänen, T. Hautala, M.J. Ciancanelli, Y. Itan, F.G. Lafaille, W. Dell, L. Lorenzo, M. Byun, E. Pauwels, Y. Rönnelid, X. Cai, S. Boucherit, E. Jouanguy, A. Paetau, P. Lebon, F. Rozenberg, M. Tardieu, L. Abel, A. Yildiran, A. Vergison, R. Roivainen, A. Etzioni, P.J. Tienari, J.-L. Casanova, and S.-Y. Zhang*  
**Editorial, p. 1882**
- 1898 Clinical spectrum of 4H leukodystrophy caused by POLR3A and POLR3B mutations  
*N.I. Wolf, A. Vanderver, R.M.L. van Spaendonk, R. Schiffmann, B. Brais, M. Bugiani, E. Sistermans, C. Catsman-Berrevoets, J.M. Kros, P.S. Pinto, D. Pohl, S. Tirupathi, P. Strømme, T. de Grauw, S. Fribourg, M. Demos, A. Pizzino, S. Naidu, K. Guerrero, M.S. van der Knaap, and G. Bernard, on behalf of the 4H Research Group*  
**Editorial, p. 1884**
- 1906 Global investigation and meta-analysis of the C9orf72 (G<sub>4</sub>C<sub>2</sub>)<sub>n</sub> repeat in Parkinson disease  
*J. Theuns, A. Verstraeten, K. Sleegers, E. Wauters, I. Gijselinck, S. Smolders, D. Crosiers, E. Corsmit, E. Elinck, M. Sharma, R. Krüger, S. Lesage, A. Brice, S.J. Chung, M.-J. Kim, Y.J. Kim, O.A. Ross, Z.K. Wszolek, E. Rogaeva, Z. Xi, A.E. Lang, C. Klein, A. Weissbach, G.D. Mellick, P.A. Silburn, G.M. Hadjigeorgiou, E. Dardiotis, N. Hattori, K. Ogaki, E.-K. Tan, Y. Zhao, J. Aasly, E.M. Valente, S. Petrucci, G. Annesi, A. Quattrone, C. Ferrarese, L. Brighina, A. Deuschländer, A. Puschmann, C. Nilsson, G. Garraux, M.S. LeDoux, R.F. Pfeiffer, M. Boczarska-Jedynak, G. Opala, D.M. Maraganore, S. Engelborghs, P.P. De Deyn, P. Cras, M. Cruts, and C. Van Broeckhoven, on behalf of the GEO-PD Consortium*

**OPEN**

- 1914 Both aerobic exercise and cognitive-behavioral therapy reduce chronic fatigue in FSHD: An RCT  
*N. Voet, G. Bleijenberg, J. Hendriks, I. de Groot, G. Padberg, B. van Engelen, and A. Geurts*  
▲
- 1923 Protective environmental factors for neuromyelitis optica  
*J. Graves, S. Grandhe, K. Weinfurtner, L. Krupp, A. Belman, T. Chitnis, J. Ness, B. Weinstock-Guttman, M. Gorman, M. Patterson, M. Rodriguez, T. Lotze, G. Aaen, E.M. Mowry, J.W. Rose, T. Simmons, T.C. Casper, J. James, and E. Waubant, for the US Network of Pediatric Multiple Sclerosis Centers*
- 1930 Increased CSF APPs-α levels in patients with Alzheimer disease treated with acitretin  
*K. Endres, F. Fahrenholz, J. Lotz, C. Hiemke, S. Teipel, K. Lieb, O. Tüscher, and A. Fellgiebel*  
▲
- 1936 Anatomical heterogeneity of Alzheimer disease: Based on cortical thickness on MRIs  
*Y. Noh, S. Jeon, J.M. Lee, S.W. Seo, G.H. Kim, H. Cho, B.S. Ye, C.W. Yoon, H.J. Kim, J. Chin, K.H. Park, K.M. Heilman, and D.L. Na*
- 1945 CSF neurofilament light differs in neurodegenerative diseases and predicts severity and survival  
*T. Skillbäck, B. Farahmand, J.W. Bartlett, C. Rosén, N. Mattsson, K. Nägga, L. Kilander, D. Religa, A. Wimo, B. Winblad, L. Rosengren, J.M. Schott, K. Blennow, M. Eriksson, and H. Zetterberg*
- 1954 Determinants of antithrombotic choice for patent foramen ovale in cryptogenic stroke  
*D.E. Thaler, R. Ruthazer, C. Weimar, J. Serena, H.P. Mattle, K. Nedeltchev, M.-L. Mono, E. Di Angelantonio, M.S.V. Elkind, M.R. Di Tullio, S. Homma, P. Michel, B. Meier, A.J. Furlan, J.S. Lutz, and D.M. Kent*

### CLINICAL IMPLICATIONS OF NEUROSCIENCE RESEARCH

- 1958 Synaptic effects of cannabinoids: Complexity, behavioral effects, and potential clinical implications  
*E.E. Benarroch*

### VIEWS & REVIEWS

- 1968 Epilepsy-related clinical characteristics and mortality: A systematic review and meta-analysis  
*O. Nevalainen, H. Ansakorpi, M. Simola, J. Raitanen, J. Isojärvi, M. Artama, and A. Auvinen*

📖 **Editorial, p. 1886**

CONTINUED

# Neurology<sup>®</sup>

## Table of Contents

*continued*



1978 Dietary treatment in adults with refractory epilepsy:

A review

P. Klein, I. Tyrlikova, and G.C. Mathews



### CLINICAL/SCIENTIFIC NOTES

1986 Clinical response to bevacizumab in schwannomatosis  
J. Blakeley, K.C. Schreck, D.G. Evans, B.R. Korf, D. Zagzag,  
M.A. Karajannis, A.L. Bergner, and A.J. Belzberg

1988 Apnea and dysphagia as the sole features of an  
 $\alpha$ -synucleinopathy  
H.J. Gilhuis, A. Panwar, S.G. Van Duinen, and  
F.J. De Jong

### NEUROIMAGES

1990 IVth ventricular neurocysticercal cyst: A rare cause of acute  
hydrocephalus  
P. Jauhari, J.K. Sahu, S. Vyas, and P. Singhi

### RESIDENT & FELLOW SECTION

e182 Clinical Reasoning: A young woman with rapid mental  
deterioration and leukoencephalopathy: A treatable cause  
D. Biotti, M. Esteban-Mader, E. Diot, C. Acquaviva, N. Guffon,  
C. Tilikete, J.-F. Benoist, P. Labauge, and A. Vighetto

### WRITECLICK<sup>®</sup> EDITOR'S CHOICE

1991 Phenotypic spectrum and incidence of TRPV4 mutations in  
patients with inherited axonal neuropathy  
J.M. Sullivan, G. Landouré, R. Gaudet, C.J. Sumner; Author  
Response: A. Echaniz-Laguna, P. Latour

1991 Clinical presentation of chronic traumatic encephalopathy  
J. Andrikopoulos; Author Response: P.H. Montenegro,  
R.A. Stern

### DEPARTMENT

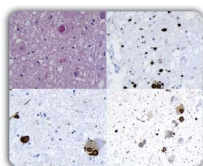
In the Next Issue of *Neurology*<sup>®</sup>

Podcast at [Neurology.org](http://Neurology.org) CME Video Patient Page LOE classification LOE recommendation



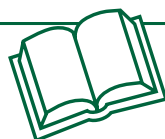
Find us on  
Facebook

[tinyurl.com/neurologyfan](http://tinyurl.com/neurologyfan) [twitter.com/GreenJournal](https://twitter.com/GreenJournal)



**Cover image:** Lewy pathology in dorsal motor nucleus of the vagal nerve, ambiguus nucleus, and locus ceruleus is revealed through staining. See page 1988.

Look for **Publish Ahead of Print** articles and editorials under the Ahead of Print tab at [Neurology.org](http://Neurology.org)



## Neurology<sup>®</sup> Online CME Program

Earn CME while reading *Neurology*. This program is available only to online *Neurology* subscribers. Simply read the articles marked CME, go to [Neurology.org](http://Neurology.org), and click on CME. This will provide all of the information necessary to get started. The American Academy of Neurology (AAN) is accredited by the Accreditation Council for Continuing Medical Education (ACCME) to sponsor continuing medical education for physicians. *Neurology* is planned and produced in accordance with the ACCME Essentials. For more information, contact AAN Member Services at 800-879-1960.

# Neurology<sup>®</sup>

83 (21)

*Neurology* 2014;83:e182-1993

**This information is current as of January 1, 2014**

**Updated Information & Services**

including high resolution figures, can be found at:  
<http://n.neurology.org/content/83/21.full>

**Permissions & Licensing**

Information about reproducing this article in parts (figures, tables) or in its entirety can be found online at:  
[http://www.neurology.org/about/about\\_the\\_journal#permissions](http://www.neurology.org/about/about_the_journal#permissions)

**Reprints**

Information about ordering reprints can be found online:  
<http://n.neurology.org/subscribers/advertise>

*Neurology*® is the official journal of the American Academy of Neurology. Published continuously since 1951, it is now a weekly with 48 issues per year. Copyright . All rights reserved. Print ISSN: 0028-3878. Online ISSN: 1526-632X.

