

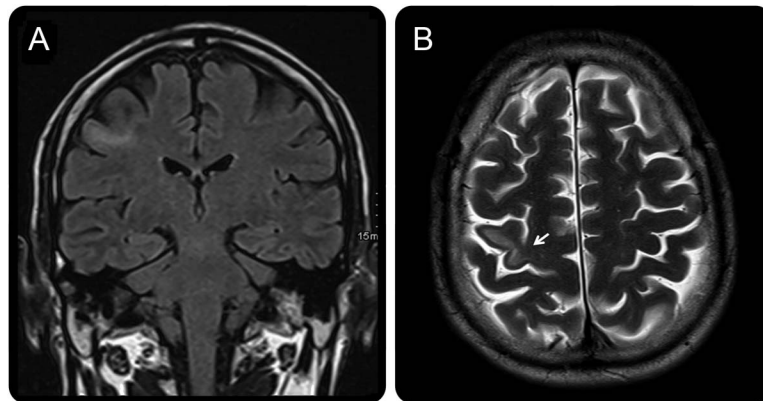
Teaching Video *NeuroImages*: Focal cortical myoclonus in progressive multifocal leukoencephalopathy



Michael Rittweger, MD
Gordian Branding, MD
Keikawus Arastéh, MD
Pascal Grosse, MD, PhD
Juri Katchanov, MD

Correspondence to:
Dr. Katchanov:
juri.katchanov@charite.de

Figure PML lesion



Fluid-attenuated inversion recovery (A) and T2-weighted (B) MRIs showing a typical hyperintense crescent-shaped progressive multifocal leukoencephalopathy (PML) lesion (arrow) involving the U fibers under the precentral gyrus of the right hemisphere. No contrast material enhancement was detected (data not shown).

A 52-year-old man with recently diagnosed HIV infection (CD4 count 105/ μ L; normal range 700–1,200/ μ L) presented with a 5-week history of irregular shaking of his left hand triggered by lifting his arm accompanied by “feeling of stiffness and clumsiness.” On clinical examination, focal myoclonus with positive and negative components affecting the left upper limb with distal predominance was detected (see video on the *Neurology*[®] Web site at Neurology.org). Cerebral MRI revealed a demyelinating lesion affecting the juxtacortical white matter of the precentral gyrus (figure). The CSF PCR for JC virus was strongly positive, confirming the diagnosis of progressive multifocal leukoencephalopathy.¹

AUTHOR CONTRIBUTIONS

Michael Rittweger: analysis or interpretation of data, accepts responsibility for conduct of research and will give final approval, acquisition

of data. Gordian Branding: study concept or design, analysis or interpretation of data, accepts responsibility for conduct of research and will give final approval, acquisition of data. Keikawus Arastéh: drafting/revising the manuscript, analysis or interpretation of data, accepts responsibility for conduct of research and will give final approval, acquisition of data. Pascal Grosse: drafting/revising the manuscript, analysis or interpretation of data, accepts responsibility for conduct of research and will give final approval. Juri Katchanov: drafting/revising the manuscript, accepts responsibility for conduct of research and will give final approval, acquisition of data.

STUDY FUNDING

No targeted funding reported.

DISCLOSURE

The authors report no disclosures relevant to the manuscript. Go to Neurology.org for full disclosures.

REFERENCE

- Berger JR, Aksamit AJ, Clifford DB, et al. PML diagnostic criteria: consensus statement from the AAN Neuroinfectious Disease Section. *Neurology* 2013;80:1430–1438.

Supplemental data
at Neurology.org

Download teaching slides:
Neurology.org

From the Departments of Infectious Diseases and Gastroenterology (M.R., K.A., J.K.) and Radiology (G.B.), Vivantes Auguste-Viktoria-Klinikum, Berlin; and Department of Neurology (P.G.), Charité-Universitätsmedizin Berlin, Germany.

Neurology®

Teaching Video *NeuroImages*: Focal cortical myoclonus in progressive multifocal leukoencephalopathy

Michael Rittweger, Gordian Branding, Keikawus Arastéh, et al.

Neurology 2014;83:e132

DOI 10.1212/WNL.0000000000000826

This information is current as of September 22, 2014

Updated Information & Services	including high resolution figures, can be found at: http://n.neurology.org/content/83/13/e132.full
Supplementary Material	Supplementary material can be found at: http://n.neurology.org/content/suppl/2014/09/21/WNL.000000000000826.DC1 http://n.neurology.org/content/suppl/2014/09/21/WNL.000000000000826.DC2
References	This article cites 1 articles, 1 of which you can access for free at: http://n.neurology.org/content/83/13/e132.full#ref-list-1
Subspecialty Collections	This article, along with others on similar topics, appears in the following collection(s): All Clinical Neurology http://n.neurology.org/cgi/collection/all_clinical_neurology All Infections http://n.neurology.org/cgi/collection/all_infections
Permissions & Licensing	Information about reproducing this article in parts (figures, tables) or in its entirety can be found online at: http://www.neurology.org/about/about_the_journal#permissions
Reprints	Information about ordering reprints can be found online: http://n.neurology.org/subscribers/advertise

Neurology® is the official journal of the American Academy of Neurology. Published continuously since 1951, it is now a weekly with 48 issues per year. Copyright © 2014 American Academy of Neurology. All rights reserved. Print ISSN: 0028-3878. Online ISSN: 1526-632X.

