

Neurology[®]

Table of Contents

Volume 82, Number 3, January 21, 2014
Neurology.org

THE MOST WIDELY READ AND HIGHLY CITED PEER-REVIEWED
NEUROLOGY JOURNAL



IN FOCUS

- 191 Spotlight on the January 21 Issue
- 229 This Week's *Neurology*[®] Podcast

EDITORIALS

- 192 "How much will I recover, doctor?" Some help with an ever-elusive answer
P. Celnik and N. Birnbaumer
- 194 Antiepileptic drugs and neurocognitive development
P. Klein and G.C. Mathews
- 196 Is there a link between gynecologic surgeries and Alzheimer disease?
W.A. Rocca and V.W. Henderson

ARTICLES

- 198 Development of movement-related intracortical inhibition in acute to chronic subcortical stroke
G. Liuzzi, V. Hörniß, P. Lechner, J. Hoppe, K. Heise, M. Zimmerman, C. Gerloff, and F.C. Hummel
Editorial, p. 192
- 206 Herpes zoster as a risk factor for stroke and TIA: A retrospective cohort study in the UK
J. Breuer, M. Pacou, A. Gauthier, and M.M. Brown
OPEN
- 213 In utero exposure to levetiracetam vs valproate: Development and language at 3 years of age
R. Shallcross, R.L. Bromley, C.P. Cheyne, M. García-Fiñana, B. Irwin, J. Morrow, and G.A. Baker
Editorial, p. 194
- 222 Age at surgical menopause influences cognitive decline and Alzheimer pathology in older women
R. Bove, E. Secor, L.B. Chibnik, L.L. Barnes, J.A. Schneider, D.A. Bennett, and P.L. De Jager
 Editorial, p. 196
- 230 Practical utility of amyloid and FDG-PET in an academic dementia center
P. Sánchez-Juan, P.M. Ghosh, J. Hagen, B. Gesierich, M. Henry, L.T. Grinberg, J.P. O'Neil, M. Janabi, E.J. Huang, J.Q. Trojanowski, H.V. Vinters, M. Gorno-Tempini, W.W. Seeley, A.L. Boxer, H.J. Rosen, J.H. Kramer, B.L. Miller, W.J. Jagust, and G.D. Rabinovici

- 239 In vivo signatures of nonfluent/agrammatic primary progressive aphasia caused by FTLD pathology
F. Caso, M.L. Mandelli, M. Henry, B. Gesierich, B.M. Bettcher, J. Ogar, M. Filippi, G. Comi, G. Magnani, M. Sidhu, J.Q. Trojanowski, E.J. Huang, L.T. Grinberg, B.L. Miller, N. Dronkers, W.W. Seeley, and M.L. Gorno-Tempini
- 248 Assessing treatment response to interferon- β : Is there a role for MRI?
R. Dobson, R.A. Rudick, B. Turner, K. Schmierer, and G. Giovannoni
- 255 Tongue pressure as a novel biomarker of spinal and bulbar muscular atrophy
T. Mano, M. Katsuno, H. Banno, K. Suzuki, N. Suga, A. Hashizume, A. Araki, H. Watanabe, S. Tanaka, M. Yamamoto, and G. Sobue
- 263 Predicting dementia in Parkinson disease by combining neurophysiologic and cognitive markers
K.T.E. Olde Dubbelink, A. Hillebrand, J.W.R. Twisk, J.B. Deijen, D. Stoffers, B.A. Schmand, C.J. Stam, and H.W. Berendse

CLINICAL IMPLICATIONS OF NEUROSCIENCE RESEARCH

- 271 Orexin/hypocretin system and autonomic control: New insights and clinical correlations
D. Grimaldi, A. Silvani, E.E. Benarroch, and P. Cortelli

CLINICAL/SCIENTIFIC NOTES

- 279 PET imaging shows loss of striatal PDE10A in patients with Huntington disease
R. Ahmad, S. Bourgeois, A. Postnov, M.E. Schmidt, G. Bormans, K. Van Laere, and W. Vandenberghe

NEUROIMAGES

- 282 Diffuse cerebral petechial hemorrhage in an 8-year-old girl with MRSA pneumonia and sepsis
M.T. Williams and H. Jiang

RESIDENT & FELLOW SECTION

- e18 International Issues: Expanding neurologic education to resource-poor countries: Lessons from Moi Teaching Hospital
M.M. Cortez, J.J. Wold, and D.R. Renner
- e21 Right Brain: Humor completes the neurologic examination
P. Bhargava

CONTINUED

Neurology[®]

Table of Contents

continued



e23 Teaching *NeuroImages*: Neonatal parechovirus encephalitis: Typical MRI findings
V. Belcastro, P. Bini, R. Barachetti, and M. Barbarini

WRITECLICK: EDITOR'S CHOICE

283 The p.L302P mutation in the lysosomal enzyme gene *SMPD1* is a risk factor for Parkinson disease
R.-M. Wu, C.-H. Lin, H.-I Lin; Author Response:
A. Orr-Urtreger, Z. Gan-Or

283 Restless legs syndrome and daytime sleepiness are prominent in myotonic dystrophy type 2
G. Silvestri, M. Laura Ester Bianchi, A. Losurdo, G. Della Marca; Author Response: E.K. St. Louis, E.M. Lam, P.W. Shepard

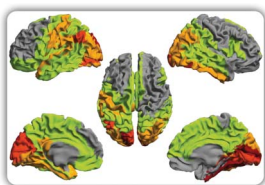
DEPARTMENT

A25 In the Next Issue of *Neurology*[®]

Podcast at www.neurology.org CME Video Patient Page LOE classification LOE recommendation

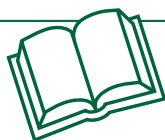


tinyurl.com/neurologyfan twitter.com/GreenJournal



Cover image: Spatial distribution of the magnetoencephalography beta power predictors that contributed significantly to risk discrimination for dementia in Parkinson disease. See page 263.

Look for **Publish Ahead of Print** articles and editorials under the Ahead of Print tab at Neurology.org



Neurology[®] Online CME Program

Earn CME while reading *Neurology*. This program is available only to online *Neurology* subscribers. Simply read the articles marked CME, go to www.neurology.org, and click on CME. This will provide all of the information necessary to get started. The American Academy of Neurology (AAN) is accredited by the Accreditation Council for Continuing Medical Education (ACCME) to sponsor continuing medical education for physicians. *Neurology* is planned and produced in accordance with the ACCME Essentials. For more information, contact AAN Member Services at 800-879-1960.

Neurology®

82 (3)

Neurology 2014;82:e21-284

This information is current as of January 1, 2014

Updated Information & Services

including high resolution figures, can be found at:
<http://n.neurology.org/content/82/3.full>

Permissions & Licensing

Information about reproducing this article in parts (figures, tables) or in its entirety can be found online at:
http://www.neurology.org/about/about_the_journal#permissions

Reprints

Information about ordering reprints can be found online:
<http://n.neurology.org/subscribers/advertise>

Neurology® is the official journal of the American Academy of Neurology. Published continuously since 1951, it is now a weekly with 48 issues per year. Copyright . All rights reserved. Print ISSN: 0028-3878. Online ISSN: 1526-632X.

