

# Teaching NeuroImages:

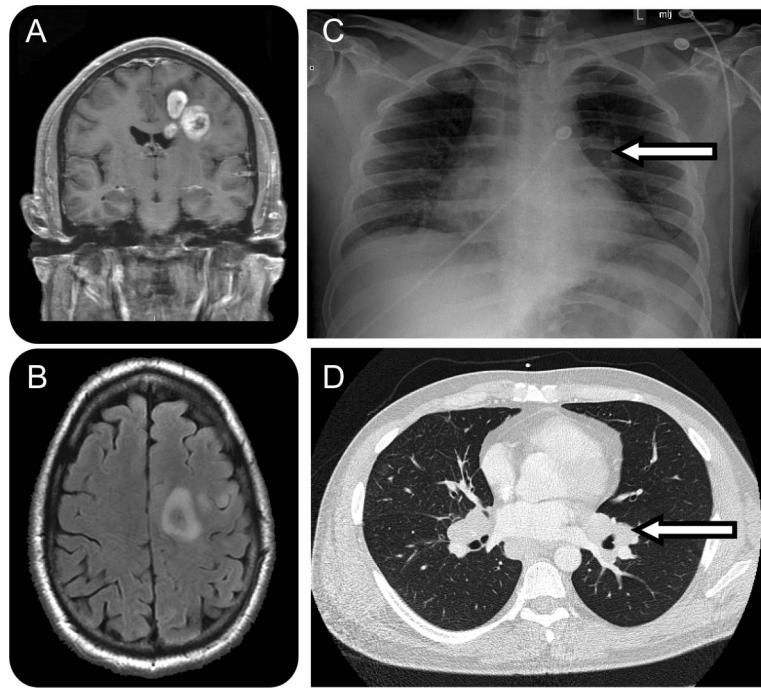
## Brain mass with hilar adenopathy

The importance of histologic diagnosis

Justin T. Jordan, MD  
Hyun-Sik Yang, MD  
Derek Narendra, MD,  
PhD  
Scott R. Plotkin, MD,  
PhD

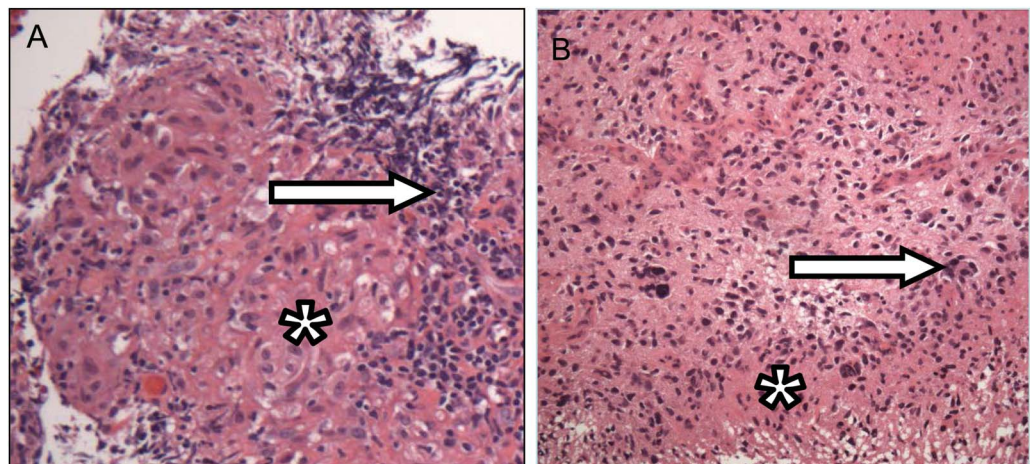
Correspondence to  
Dr. Jordan:  
jtjordan@mgh.harvard.edu

**Figure 1** Brain and chest imaging



Coronal contrasted T1 (A) shows heterogeneously enhancing, multifocal mass. Axial fluid-attenuated inversion recovery (B) shows vasogenic edema. Chest x-ray (C) and CT (D) demonstrate lymphadenopathy (arrows).

**Figure 2** Pathology



Lymph node biopsy (A) reveals sarcoid, with noncaseating granuloma (asterisk) surrounded by lymphocytes (arrow). Brain biopsy (B) reveals glioblastoma, with pseudopalisading necrosis (asterisk) and vascular proliferation (arrow).

Download teaching slides:  
[Neurology.org](http://Neurology.org)

From the Division of Neuro-Oncology (J.T.J., S.R.P.), Department of Neurology (H.-S.Y., D.N.), Massachusetts General Hospital, Boston.  
Go to [Neurology.org](http://Neurology.org) for full disclosures. Funding information and disclosures deemed relevant by the authors, if any, are provided at the end of the article.

A 30-year-old man presented with weeks of progressive headaches, imbalance, and aphasia. Brain MRI revealed an enhancing left frontal mass (figure 1, A and B). Chest imaging revealed mediastinal and hilar adenopathy (figure 1, C and D). Metastatic cancer was initially suspected, but pulmonary lymph node aspiration revealed sarcoidosis (figure 2A). Subsequent brain biopsy revealed glioblastoma (figure 2B).

This case emphasizes the importance of histologic diagnosis before initiating therapy. One study demonstrated nearly 50% variation in diagnosis following brain biopsy, 27% leading to a change in treatment.<sup>1</sup> Sarcoid is associated with increased risk of certain cancers, though this has not been demonstrated for gliomas.<sup>2</sup>

#### **AUTHOR CONTRIBUTIONS**

Analysis and interpretation of data: Drs. Jordan, Yang, Narendra, and Plotkin. Drafting of the manuscript: Drs. Jordan, Yang, and Plotkin.

Critical revision of the manuscript for important intellectual content: Drs. Jordan, Yang, Narendra, and Plotkin.

#### **ACKNOWLEDGMENT**

The authors thank Dr. Maria Cobos Sillero, fellow in the Department of Neuropathology at the Massachusetts General Hospital, for her assistance in obtaining pathologic photographs.

#### **STUDY FUNDING**

No targeted funding reported.

#### **DISCLOSURE**

The authors report no disclosures relevant to the manuscript. Go to [Neurology.org](http://Neurology.org) for full disclosures.

#### **REFERENCES**

1. Kim JE, Kim DG, Paek SH, Jung HW. Stereotactic biopsy for intracranial lesions: reliability and its impact on the planning of treatment. *Acta Neurochir* 2003;145:547–555.
2. Le Jeune I, Gribbin J, West J, et al. The incidence of cancer in patients with idiopathic pulmonary fibrosis and sarcoidosis in the UK. *Resp Med* 2007;101:2534–2540.

# Neurology®

## Teaching *NeuroImages*: Brain mass with hilar adenopathy: The importance of histologic diagnosis

Justin T. Jordan, Hyun-Sik Yang, Derek Narendra, et al.

*Neurology* 2014;82:e161-e162

DOI 10.1212/WNL.0000000000000393

**This information is current as of May 5, 2014**

<b>Updated Information &amp; Services</b>	including high resolution figures, can be found at: <a href="http://n.neurology.org/content/82/18/e161.full">http://n.neurology.org/content/82/18/e161.full</a>
<b>Supplementary Material</b>	Supplementary material can be found at: <a href="http://n.neurology.org/content/suppl/2014/05/04/82.18.e161.DC1">http://n.neurology.org/content/suppl/2014/05/04/82.18.e161.DC1</a>
<b>References</b>	This article cites 2 articles, 0 of which you can access for free at: <a href="http://n.neurology.org/content/82/18/e161.full#ref-list-1">http://n.neurology.org/content/82/18/e161.full#ref-list-1</a>
<b>Subspecialty Collections</b>	This article, along with others on similar topics, appears in the following collection(s): <b>All Oncology</b> <a href="http://n.neurology.org/cgi/collection/all_oncology">http://n.neurology.org/cgi/collection/all_oncology</a> <b>Autoimmune diseases</b> <a href="http://n.neurology.org/cgi/collection/autoimmune_diseases">http://n.neurology.org/cgi/collection/autoimmune_diseases</a> <b>Primary brain tumor</b> <a href="http://n.neurology.org/cgi/collection/primary_brain_tumor">http://n.neurology.org/cgi/collection/primary_brain_tumor</a>
<b>Permissions &amp; Licensing</b>	Information about reproducing this article in parts (figures, tables) or in its entirety can be found online at: <a href="http://www.neurology.org/about/about_the_journal#permissions">http://www.neurology.org/about/about_the_journal#permissions</a>
<b>Reprints</b>	Information about ordering reprints can be found online: <a href="http://n.neurology.org/subscribers/advertise">http://n.neurology.org/subscribers/advertise</a>

*Neurology*® is the official journal of the American Academy of Neurology. Published continuously since 1951, it is now a weekly with 48 issues per year. Copyright © 2014 American Academy of Neurology. All rights reserved. Print ISSN: 0028-3878. Online ISSN: 1526-632X.

