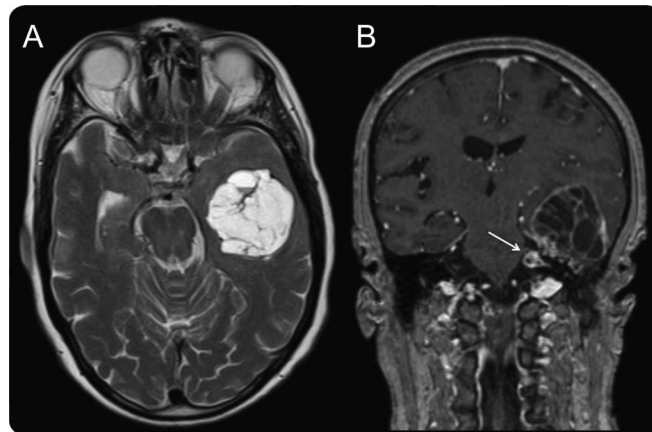


Giant left middle fossa VII nerve schwannoma associated with amnesia

Figure MRI of the facial schwannoma



(A) Extra-axial mass located in the left middle fossa of multicystic appearance. The lesion of well-defined limits compresses the neighboring brain parenchyma and has no surrounding edema. (B) There is additional involvement of the internal auditory canal invading the left pontocerebellar cistern (arrow).

The facial nerve is the third most frequent location of intracranial schwannomas, with facial paresis the most common sign.^{1,2} A 77-year-old woman presented with amnesia; the Mini-Mental State Examination score was 26, with normal cranial nerve function. A giant multicystic VII nerve schwannoma was identified in the left middle fossa, with components of the tumor in the temporal bone facial canal, geniculate ganglion, and internal auditory canal (figure). Compression of the hippocampus may have accounted for the clinical presentation. The middle fossa component of the tumor was resected for mass effect relief, with iatrogenic facial palsy.

André Cunha, MD, Daniela Seixas, MD, PhD, Lino Mascarenhas, MD, Mário Resende, MD, Antónia Furtado, MD, António Rui Figueiredo Ribeiro, MD

From the Departments of Neuroradiology (A.C., D.S., A.R.F.R.), Neurosurgery (L.M., M.R.), and Anatomical & Cellular Pathology (A.F.), C. Hospitalar Vila Nova Gaia/Espinho and Faculty of Medicine of Porto University (D.S.), Portugal.

Author contributions: Dr. André Cunha: study concept and design. Prof. Dr. Daniela Seixas: critical revision of the manuscript for important intellectual content. Dr. Lino Mascarenhas: supervision of clinical details. Dr. Mário Resende: acquisition of clinical data. Dr. Antónia Furtado: analysis and interpretation of pathologic data. Dr. António Rui Figueiredo Ribeiro: acquisition and supervision of image data.

Study funding: No targeted funding reported.

Disclosure: The authors report no disclosures relevant to the manuscript. Go to Neurology.org for full disclosures.

Correspondence to Dr. Cunha: andrecunha86@hotmail.com

1. Veillon F, Taboada LR, Eid MA, et al. Pathology of the facial nerve. *Neuroimaging Clin N Am* 2008;18:309–320.
2. Lassaletta L, Roda JM, Frutos R, Patrón M, Gavilán J. Facial nerve schwannoma of the cerebellopontine angle: a diagnostic challenge. *Skull Base* 2002;12:203–207.

Neurology®

Giant left middle fossa VII nerve schwannoma associated with amnesia

André Cunha, Daniela Seixas, Lino Mascarenhas, et al.

Neurology 2013;81;602

DOI 10.1212/WNL.0b013e31829e6eec

This information is current as of August 5, 2013

Updated Information & Services	including high resolution figures, can be found at: http://n.neurology.org/content/81/6/602.full
References	This article cites 2 articles, 0 of which you can access for free at: http://n.neurology.org/content/81/6/602.full#ref-list-1
Subspecialty Collections	This article, along with others on similar topics, appears in the following collection(s): MRI http://n.neurology.org/cgi/collection/mri Nerve tumor http://n.neurology.org/cgi/collection/nerve_tumor
Permissions & Licensing	Information about reproducing this article in parts (figures, tables) or in its entirety can be found online at: http://www.neurology.org/about/about_the_journal#permissions
Reprints	Information about ordering reprints can be found online: http://n.neurology.org/subscribers/advertise

Neurology® is the official journal of the American Academy of Neurology. Published continuously since 1951, it is now a weekly with 48 issues per year. Copyright © 2013 American Academy of Neurology. All rights reserved. Print ISSN: 0028-3878. Online ISSN: 1526-632X.

