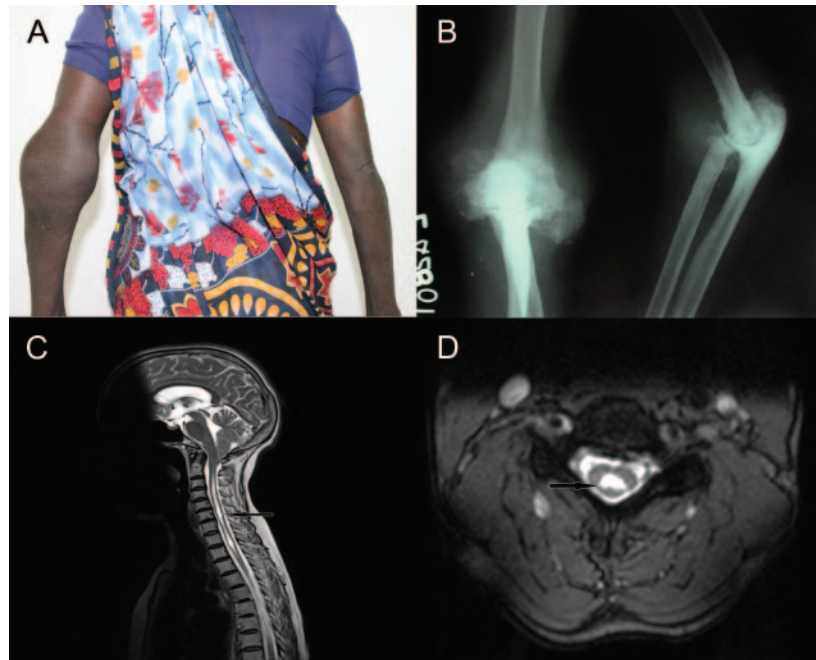


Teaching NeuroImages: Neuropathic elbow arthropathy due to syringomyelia

Aditya Murgai, MD
Pradeep Pankajakshan
Nair, MD, DM
Sunil Narayan, MD,
DM, MNAMS

Correspondence & reprint
requests to Dr. Nair:
drpradeepnair17@gmail.com

Figure MRI cervical spine and X-ray elbow joint



(A) Photograph of the patient shows left elbow joint arthritis. (B) X-ray of left elbow joint shows destruction, disorganization, sclerosis, and debris formation suggestive of neuropathic arthropathy. (C) MRI cervical spine sagittal T2-weighted sequence shows syringomyelia extending from C2 to T3. (D) MRI cervical spine axial T2-weighted sequence shows syringomyelia at C6 level.

A 45-year-old woman presented with 3 months of left elbow swelling and minimal pain (figure, A). She did not remember any upper extremity injury. On examination, she had arthritis of left elbow, wasting of small muscles of the hand, depressed biceps and supinator jerks, and decreased pain and temperature sensation over C5 to T1 dermatomes bilaterally. Tests for syphilis, diabetes mellitus, and leprosy were negative. Left elbow X-ray revealed joint destruction, disorganization, sclerosis, and debris formation (figure, B), Cervical spine MRI revealed syringomyelia from C2 to T3 vertebra level (figure, C and D). She was diagnosed with neuropathic left elbow arthropathy due to syringomyelia.^{1,2}

AUTHOR CONTRIBUTIONS

Aditya Murgai: data acquisition, drafting of manuscript. Pradeep Pankajakshan Nair: drafting and revising of manuscript, concept of the manuscript. Sunil Narayan: drafting and revising of manuscript.

REFERENCES

1. Ruetten P, Stuyck J, Debeer P. Neuropathic arthropathy of the shoulder and elbow associated with syringomyelia: a report of 3 cases. *Acta Orthop Belg* 2007;73:525–529.
2. Nacir B, Arslan Cebeci S, Cetinkaya E, Karagoz A, Erdem HR. Neuropathic arthropathy progressing with multiple joint involvement in the upper extremity due to syringomyelia and type I Arnold-Chiari malformation. *Rheumatol Int* 2010;30:979–983.

From the Department of Neurology, Jawaharlal Institute of Postgraduate Medical Education and Research, Pondicherry, India. The authors report no disclosures relevant to the manuscript. Go to Neurology.org for full disclosures.

Neurology®

Teaching NeuroImages: Neuropathic elbow arthropathy due to syringomyelia

Aditya Murgai, Pradeep Pankajakshan Nair and Sunil Narayan

Neurology 2012;79:e102

DOI 10.1212/WNL.0b013e31826aad39

This information is current as of September 17, 2012

Updated Information & Services	including high resolution figures, can be found at: http://n.neurology.org/content/79/12/e102.full
References	This article cites 2 articles, 0 of which you can access for free at: http://n.neurology.org/content/79/12/e102.full#ref-list-1
Subspecialty Collections	This article, along with others on similar topics, appears in the following collection(s): All Spinal Cord http://n.neurology.org/cgi/collection/all_spinal_cord MRI http://n.neurology.org/cgi/collection/mri Neuropathic pain http://n.neurology.org/cgi/collection/neuropathic_pain
Permissions & Licensing	Information about reproducing this article in parts (figures, tables) or in its entirety can be found online at: http://www.neurology.org/about/about_the_journal#permissions
Reprints	Information about ordering reprints can be found online: http://n.neurology.org/subscribers/advertise

Neurology® is the official journal of the American Academy of Neurology. Published continuously since 1951, it is now a weekly with 48 issues per year. Copyright © 2012 by AAN Enterprises, Inc.. All rights reserved. Print ISSN: 0028-3878. Online ISSN: 1526-632X.

