

**Editor's Note:** The figure originally posted in this reply on the *Neurology*<sup>®</sup> Web site was erroneous and was replaced by the author before print publication.

Copyright © 2010 by AAN Enterprises, Inc.

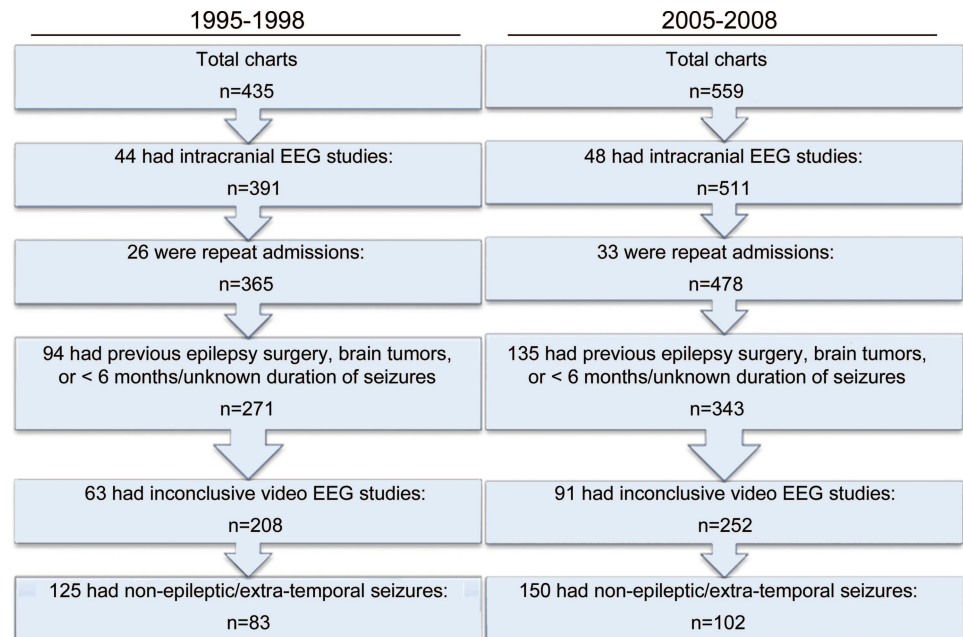
- Ahlskog JE, Uitti RJ. Rasagiline, Parkinson neuroprotection, and delayed-start trials: still no satisfaction? *Neurology* 2010;74:1143–1148.
- Olanow CW, Rascol O. The delayed-start study in Parkinson disease: can't satisfy everyone. *Neurology* 2010;74:1149–1150.
- Montgomery EB Jr, Turkstra LS. Evidenced based medicine: let's be reasonable. *J Med Speech Lang Pathol* 2003;11:ix–xii.
- Popper K. *The Logic of Scientific Discovery*. New York: Routledge; 2002.
- Feyerabend P. *Against Method*. London: Verso; 2002.
- Schwarzschild MA. Rasagiline in Parkinson's disease. *N Engl J Med* 2010;18:658.
- Olanow CW, Rascol O, Hauser R, et al. A double-blind, delayed-start trial of rasagiline in Parkinson's disease. *N Engl J Med* 2009;361:1268–1278.
- Olanow CW, Rascol O. Rasagiline in Parkinson's disease. *N Engl J Med* 2010;18:658–659. Letter.
- Parkinson Study Group. A controlled, randomized, delayed-start study of rasagiline in early Parkinson's disease. *Arch Neurol* 2004;61:561–566.
- Bhattaram VA, Siddiqui O, Kapcala LP, Gobburu JVS. Endpoints and analyses to discern disease-modifying drug effects in early Parkinson's disease. *AAPS J* 2009;11:456–464.

### CORRECTION

#### Referral pattern for epilepsy surgery after evidence-based recommendations: A retrospective study

In the article "Referral pattern for epilepsy surgery after evidence-based recommendations: A retrospective study" by Z. Haneef et al. (*Neurology*<sup>®</sup> 2010;75:699–704), figure 1 had multiple erroneous numbers. The corrected figure appears below. The authors regret the error.

**Figure 1** Flowchart detailing selection of patients with temporal lobe epilepsy from initial chart review



# Neurology<sup>®</sup>

## Referral pattern for epilepsy surgery after evidence-based recommendations: A retrospective study

*Neurology* 2010;75;1945  
DOI 10.1212/WNL.0b013e3181ffd684

**This information is current as of November 22, 2010**

### Updated Information & Services

including high resolution figures, can be found at:  
<http://n.neurology.org/content/75/21/1945.full>

### Permissions & Licensing

Information about reproducing this article in parts (figures, tables) or in its entirety can be found online at:  
[http://www.neurology.org/about/about\\_the\\_journal#permissions](http://www.neurology.org/about/about_the_journal#permissions)

### Reprints

Information about ordering reprints can be found online:  
<http://n.neurology.org/subscribers/advertise>

*Neurology*® is the official journal of the American Academy of Neurology. Published continuously since 1951, it is now a weekly with 48 issues per year. Copyright Copyright © 2010 by AAN Enterprises, Inc.. All rights reserved. Print ISSN: 0028-3878. Online ISSN: 1526-632X.

