

Symptomatic left intradiploic encephalocele

A 50-year-old man developed right upper extremity weakness after a violent coughing spell. Imaging studies (figure 1, A and B) demonstrated a large fluid-filled calvarial defect containing herniated brain near the level of the motor cortex. The brain tissue which was “strangulated” by ossified dura while protruding into the calvarial defect was decompressed (figure 2), with resultant substantial progressive though incomplete clinical improvement. Intradiploic encephaloceles are rare.¹ We hypothesize that, in our patient, the paroxysmal increase in intracranial pressure associated with the violent cough resulted in further herniation of the brain already protruding through a defect, resulting in his symptoms.

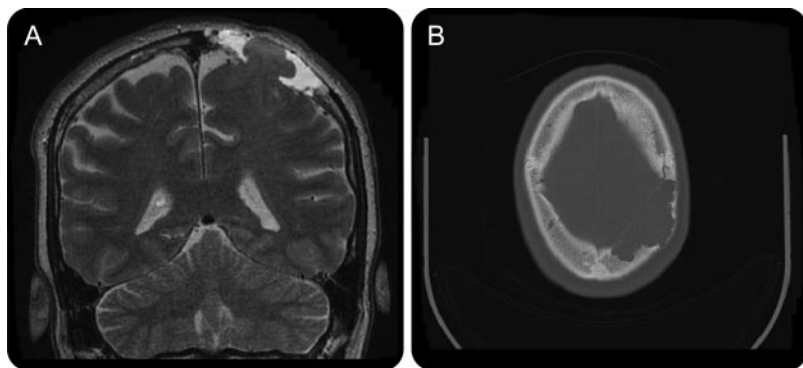
Ioannis Loumiotis, MD, Lyell Jones, MD, Felix Diehn, MD, Giuseppe Lanzino, MD, Rochester, MN

Disclosure: Dr. Loumiotis reports no disclosures. Dr. Jones has received research support from the Henry Jackson Foundation. Dr. Diehn serves as a Section Editor for *Radiology Case Reports*. Dr. Lanzino serves on scientific advisory boards for Actelion Pharmaceuticals Ltd. and Edge Therapeutics, Inc.; serves on the editorial boards of the *Journal of Neurosurgery*, *Neurocritical Care*, and *Stroke*, and as a Section Editor for *Neurosurgery*; receives royalties from the publication of *Cavernous Malformations of the Brain and Spinal Cord* (Thieme, 2008); received a speaker honorarium from Synthes; and has received education grants from eV3 and Synthes.

Address correspondence and reprint requests to Dr. Giuseppe Lanzino, Mayo Clinic, Department of Neurosurgery, 200 First Street SW, Rochester, MN 55905; lanzino.giuseppe@mayo.edu

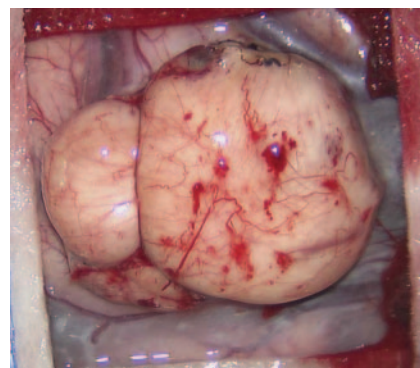
1. Kosnik EJ, Meagher JN, Quenemoen LR. Parietal intradiploic encephalocele: case report. *J Neurosurg* 1976;44:617–619.

Figure 1 Imaging



(A) Coronal T2-weighted MRI. A 6-cm fluid-filled parietal calvarial defect contains a small amount of herniated posterosuperior left frontal lobe. A mild amount of gliotic-type abnormal T2 signal in the herniated and underlying frontal lobe is present. Mild superior retraction of the underlying intracranial frontal lobe is seen. (B) Axial bone algorithm CT. Two-centimeter inner table parietal calvarial defect is noted, with scalloped margins of the larger cystic intradiploic calvarial lesion. There is marked thinning of the outer table of the calvarium.

Figure 2 Intraoperative picture



Herniating brain parenchyma after removal of the thinned outer cortical calvarial layer and resection of the ossified dura encircling the herniated brain substance. (Top is anterior, left is medial toward the superior sagittal sinus.) The herniated brain was found along the motor strip.

Neurology®

Symptomatic left intradiploic encephalocele
Ioannis Loumiotis, Lyell Jones, Felix Diehn, et al.
Neurology 2010;75;1027
DOI 10.1212/WNL.0b013e3181f25f31

This information is current as of September 13, 2010

Updated Information & Services	including high resolution figures, can be found at: http://n.neurology.org/content/75/11/1027.full
References	This article cites 1 articles, 0 of which you can access for free at: http://n.neurology.org/content/75/11/1027.full#ref-list-1
Citations	This article has been cited by 1 HighWire-hosted articles: http://n.neurology.org/content/75/11/1027.full##otherarticles
Permissions & Licensing	Information about reproducing this article in parts (figures, tables) or in its entirety can be found online at: http://www.neurology.org/about/about_the_journal#permissions
Reprints	Information about ordering reprints can be found online: http://n.neurology.org/subscribers/advertise

Neurology® is the official journal of the American Academy of Neurology. Published continuously since 1951, it is now a weekly with 48 issues per year. Copyright . All rights reserved. Print ISSN: 0028-3878. Online ISSN: 1526-632X.

